



# 3651 N. SOUTHPORT AVE.

CHICAGO, IL 60613



## FOR RENT | RETAIL

PHENOMENAL LOCATION AND VISIBILITY! STREET-LEVEL RETAIL ON BUSTLING SOUTHPORT CORRIDOR, JUST A SHORT 7 MINUTE WALK FROM WRIGLEY FIELD, AND A 6 MINUTE WALK TO THE SOUTHPORT BROWN LINE STATION. JUST ACROSS THE STREET FROM JEWEL-OSCO, THE AREA'S MAIN SUPERMARKET.

- SPACE AVAILABLE** | 1,520 SF
- ANNUAL NET RENT\*** | \$39.50 / SF
- CAM & TAX** | \$5.29 / SF
- POPULATION** | 254,000 WITHIN 2 MILES
- AVERAGE HH INCOME** | \$121,300+ WITHIN 2 MILES
- ZONING** | B3-2

\*Available spaces only

TENANTS  
INCLUDE



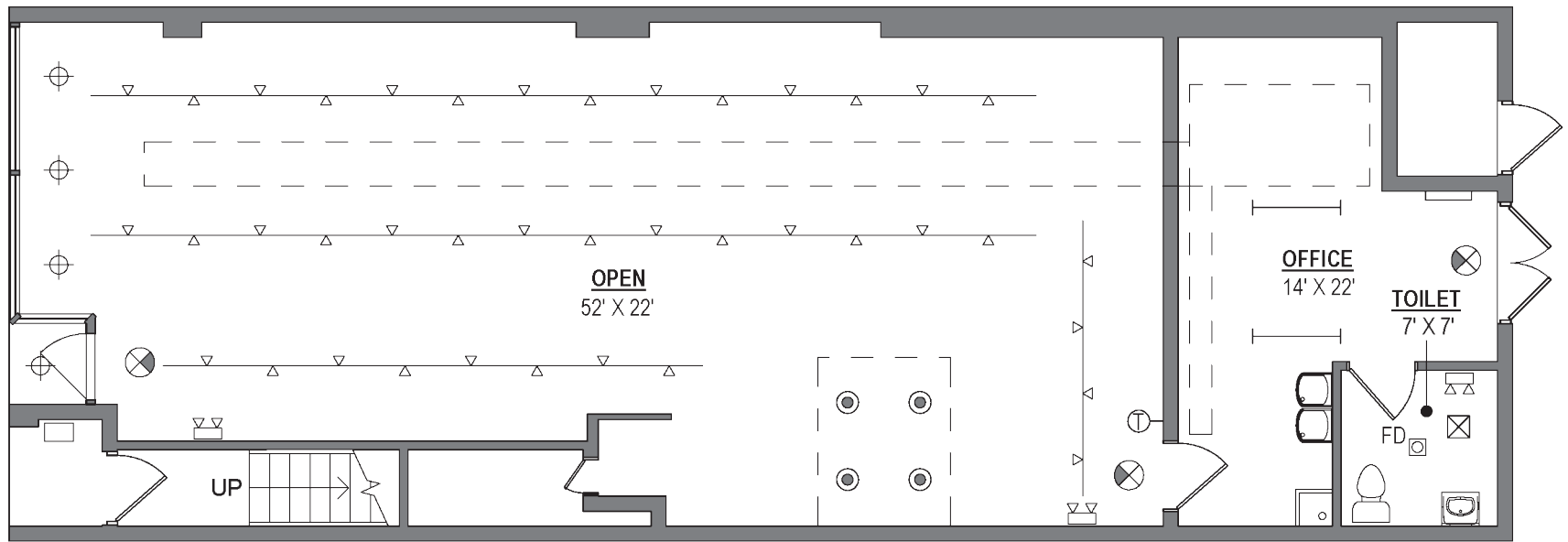
CONTACT

**SCOTT LEVINSON** | 312-337-1001 xt. 2022 | [slevinson@matanky.com](mailto:slevinson@matanky.com)

# 3651 N. SOUTHPORT AVE.

CHICAGO, IL 60613

SITE PLAN



MAP



312-337-1001



SCOTT LEVINSON

JOIN US ON:



MATANKY REALTY GROUP