

FOR LEASE

2,168 SF Office Suite

*259 Veterans Lane, Suite 202
Doylestown Borough, Bucks County, PA*



COMMERCIAL • INDUSTRIAL • INVESTMENT



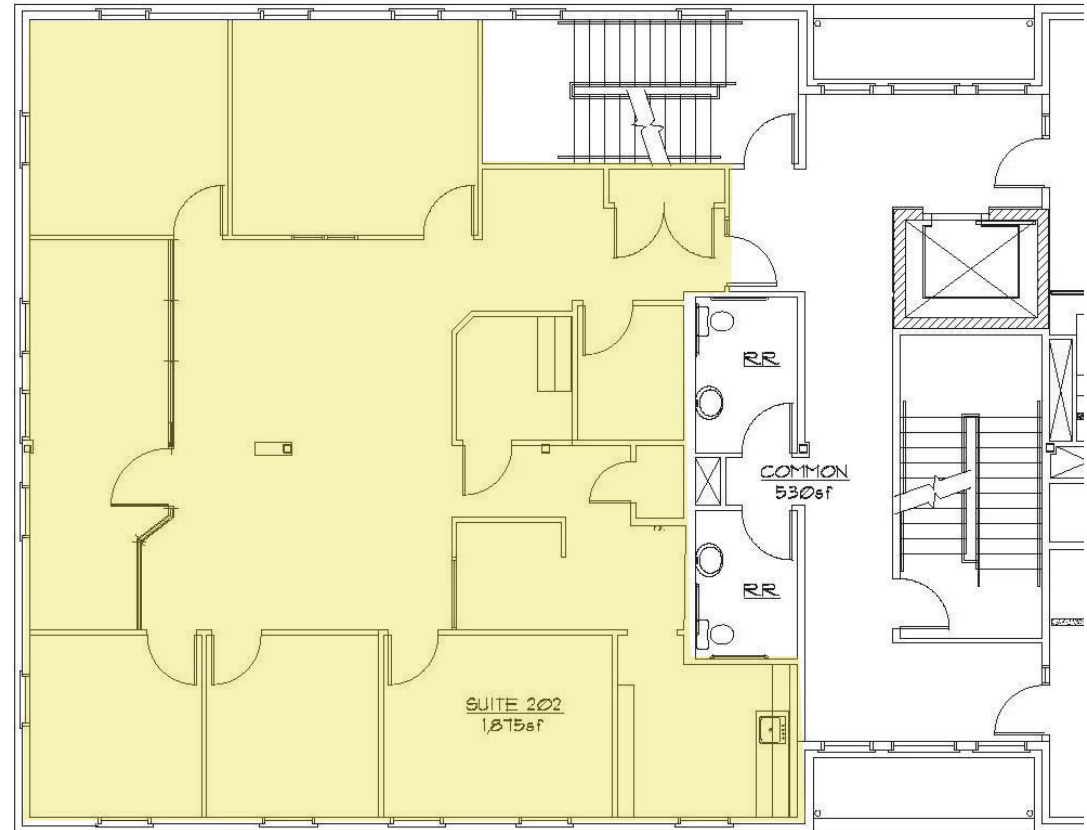
PRESENTED BY: Kurt Eisenschmid, CCIM — Penn's Grant Realty Corporation
2005 S Easton Rd, STE 306, Doylestown, PA • 215-489-3800 x3 • kurt@pgrealty.com • www.pgrealty.com

PROPERTY HIGHLIGHTS

- **Great Doylestown Borough Location with Parking**
- **Restaurants & Retail Service Within One Block**
- **Moments from 611 By-Pass & 202 Parkway**
 - **Elevator**
 - **Private Offices**
 - **Conference Room**
- **Excellent Window Lines & Natural Light (3 sides of glass)**

PROPERTY SPECIFICATIONS

Available Space: 2,168± SF
Location: 2nd Floor
Water: Public
Sewer: Public
Utilities: PECO
Municipality: Doylestown Borough
Zoning: C - Commercial
Lease Price: \$23 PSF - plus utilities & interior cleaning



Suite 202 - 2,168± SF



