

For Sale/Lease

Free Standing Building

Wichita, KS



East Central Retail/Office

6019 E. Central
Wichita, Kansas 67208

Property Highlights

- Recently renovated free standing brick office/retail building.
- Main floor is 1,300 sq.ft. with additional 944 sq.ft. basement
- Great frontage and accessibility on East Central.
- Showroom/reception area, two offices, kitchen/break area, and restroom.
- Basement features two large storage rooms with large closet and restroom.
- Parking in front and rear of building.
- Lease Rate: \$1,650/month (gross)
- Sale Price: \$179,000

OFFERING SUMMARY

Sale Price	\$179,000
Lease Rate	\$1,650/month, Gross
Lot Size	0.17 Acres
Building Size	1,300 SF

DEMOGRAPHICS

Stats	Population	Avg. HH Income
1 Mile	9,386	\$85,609
3 Miles	98,844	\$60,742
5 Miles	194,023	\$58,117

For more information

Glenn Cox

O: 316 847 4919
GCox@naimartens.com

Ryan Hubbard

O: 316 613 2448
Rhubbard@naimartens.com



435 South Broadway,
Wichita, KS 67202
316 262 0000 tel
naimartens.com



Additional Photos



East Central Retail/Office

6019 E. Central
Wichita, Kansas 67208



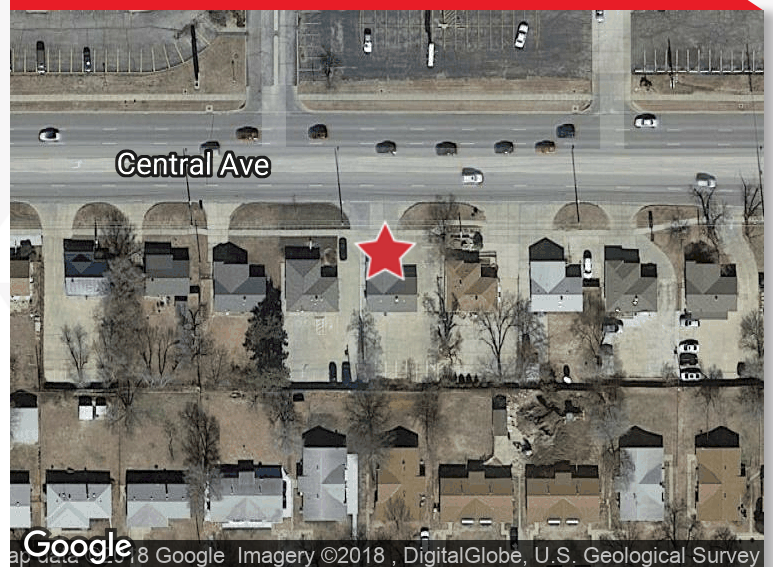
For more information

Glenn Cox

O: 316 847 4919 | GCox@naimartens.com

Ryan Hubbard

O: 316 613 2448 | Rhubbard@naimartens.com



NAIMartens

435 South Broadway,
Wichita, KS 67202
316 262 0000 tel
naimartens.com

