



AVAILABLE



Retail and Office Space For Lease



Location: 116 Terry Parkway, Gretna, LA 70056
(Right past Oakwood Mall, across from the Social Security Building)

Available:	Suite	Size	PSE	Monthly
	E.....	1,100sf.....	\$14.18	\$1,300.00 (modified gross)
	F.....	1,100sf.....	\$14.18	\$1,300.00 (modified gross)
	G	2,100sf.....	\$10.86	\$1,900.00 (modified gross)

Tenant Mix: Tammy's Nails & Spa, Boost Mobile, Golden Wings & Progressive Insurance

- Description:**
- » See attached layout for suite configurations
 - » Suites F & G are recently renovated
 - » Pylon signage available
 - » Suites F & G can be combined for 3,200 square feet
 - » All suites can be combined for 4,300 square feet



COMMERCIAL REAL ESTATE SERVICES

1700 Central Boulevard
Harvey, Louisiana 70058
(504) 366-6800
www.jackstumpf.com

Cerruti

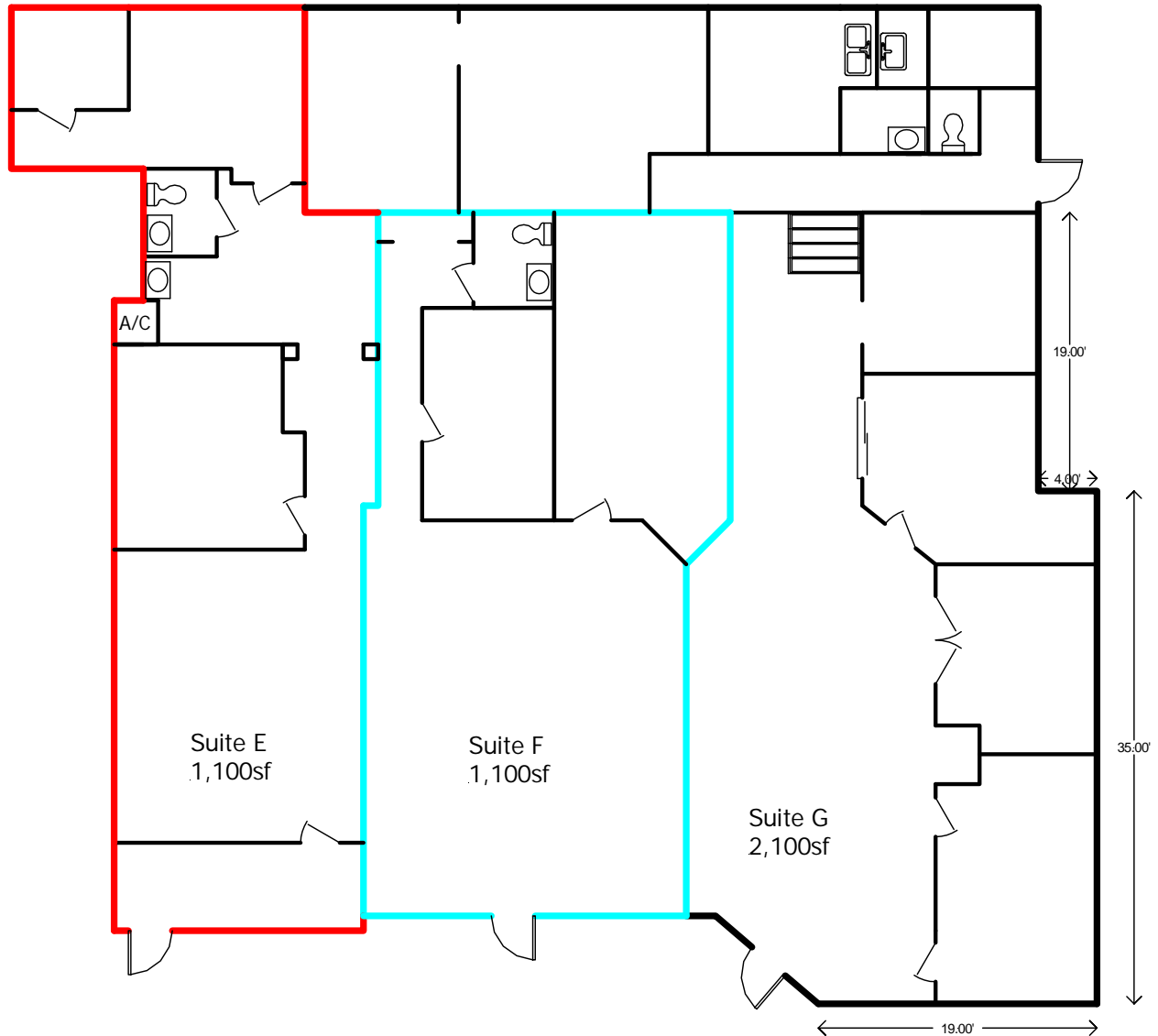
Listing Agent: Jon
(504) 366-6800

June 2019

The information presented herein has been furnished by the owner or obtained from sources we deem reliable. No warranties or representations, either expressed or implied are made as to the accuracy of the data provided, and same is subject to error, omission, change of price, and/or conditions of availability without notice.

Drawn By:
Jack Stumpf & Assoc.
1700 Central Blvd.
Harvey, LA 70058
(504) 366-6800

June 11, 2019



116 Terry Parkway
Terrytown, LA 70056