

Available Medical Office Space for Lease

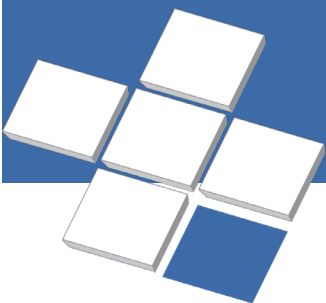
# Kenneth E. Watts Medical Plaza

20911 Earl Street, Torrance, CA 90503



For Leasing Information:  
Lynn Lantgen  
Senior Director of Leasing  
Phone: 858-794-1900  
llantgen@pmbres.com  
www.pmbres.com  
CA Lic. 00981851

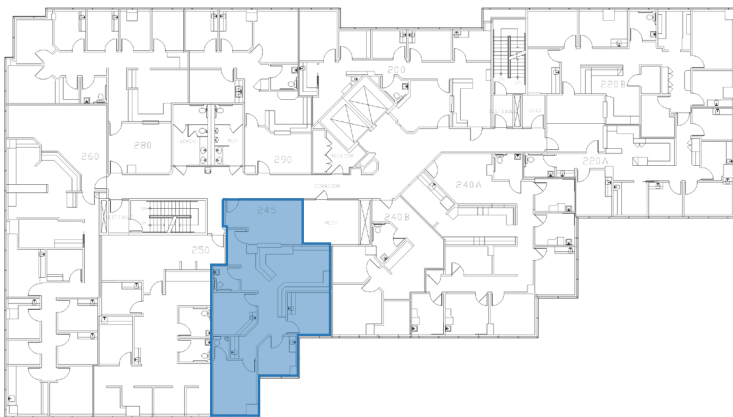
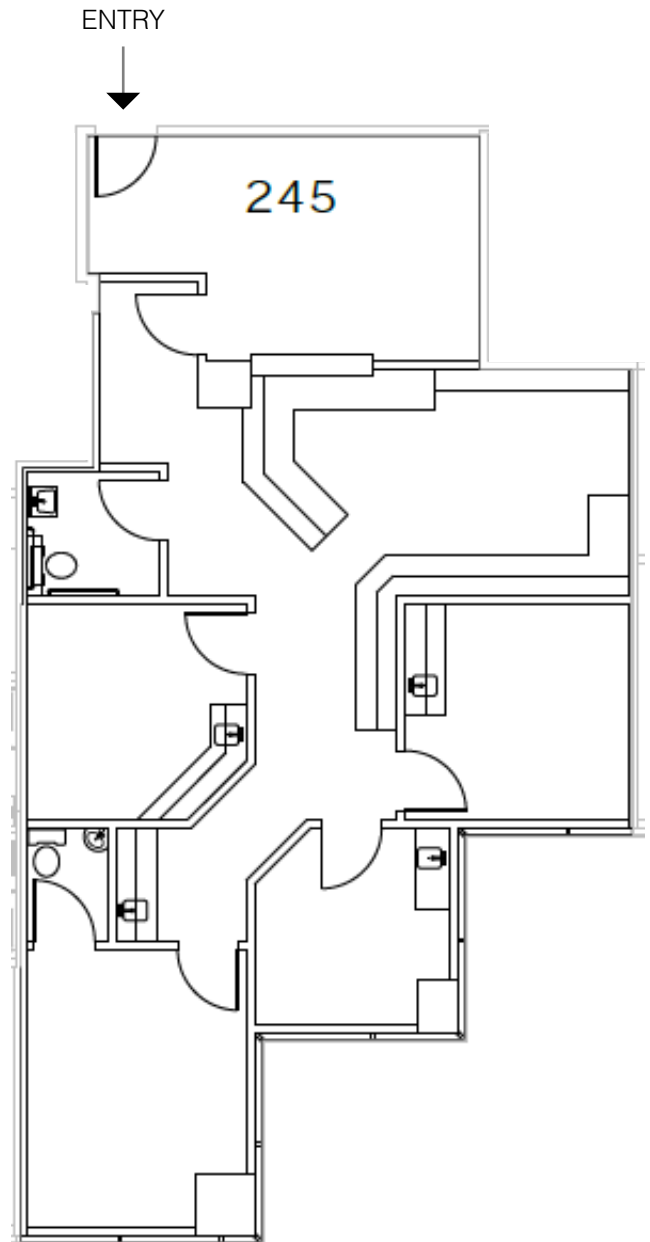
- Located adjacent to the Providence Little Company of Mary Medical Center Campus
- Energy efficient building
- Move-in incentives for new leases
- Ample free parking
- Diverse physician base



**PMB**  
Real Estate Services  
*Real Estate Management Solutions for Healthcare*



# Suite 245 - 1,416 RSF (Available 11/16/2020)



For Leasing Information:  
Lynn Lantgen | Senior Director of Leasing  
Phone: 858-794-1900 | [llantgen@pmbres.com](mailto:llantgen@pmbres.com)  
[www.pmbres.com](http://www.pmbres.com) | CA Lic. 00981851

