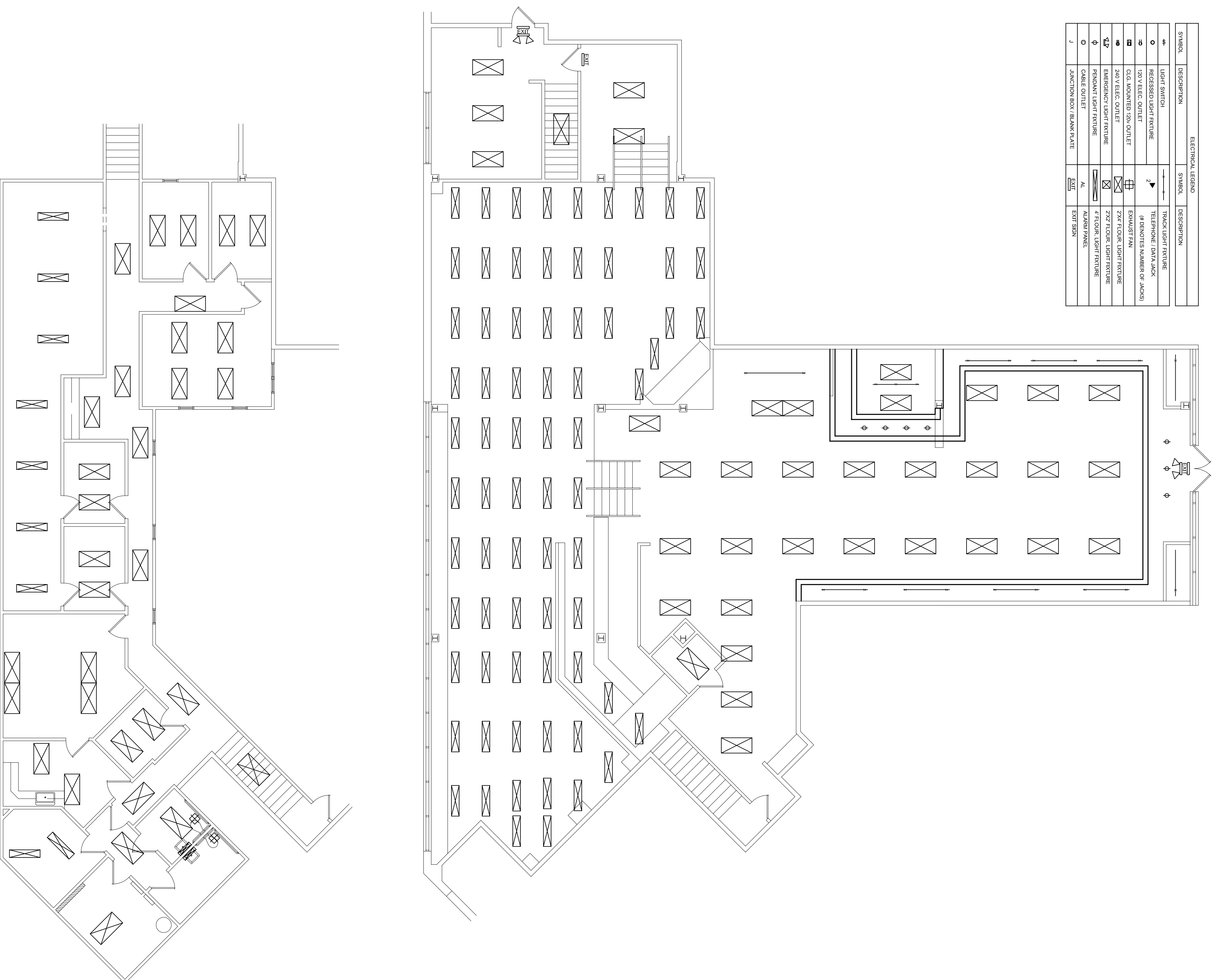


NOTES:

SYMBOL	DESCRIPTION	SYMBOL	DESCRIPTION
⬆	LIGHT SWITCH	➔	TRACK LIGHT FIXTURE
○	RECESSED LIGHT FIXTURE	⬆	TRANSFORMER (DO NOT ASSESS NUMBER OF JUNCTIONS)
□	10' V. ELEC. OUTLET	⬆	CONDUIT RUN
□	6'0" MOUNTED DISC-OUTLET	⬆	525' FLOOR LIGHT FIXTURE
□	20' V. ELEC. OUTLET	⬆	525' FLOOR LIGHT FIXTURE
⊕	EMERGENCY LIGHT FIXTURE	⬆	1' FLOOR LIGHT FIXTURE
⊕	PHOSPHOR LIGHT FIXTURE	⬆	ADDITIONAL
○	FACE-OUTLET	⬆	EXIT SIGN
⊕	JUNCTION BOX (MANUFACTURE)	⬆	



Lighting Plan

SCALE: 1/8"=1'-0"

1 2 3 4 5 6 7 8 9 10

H

G

F

E

D

C

B

A

This drawing is the property of O'Rek Realty, and is issued subject to the condition that it is not to be copied or reproduced either in whole or in part, or used in any manner without the written consent of O'Rek Realty. Drawings are not to be used for any other project or site without the written consent of O'Rek Realty. O'Rek Realty is not responsible for any discrepancies or non-compliance prior to the start of construction. Contractor to notify architect of any intended change in construction materials, methods, size, etc., as indicated on drawings for review and approval prior to commencement of such work.

Glenview Pointe
Suite B
2400 Lime Kiln Ln
Louisville, Kentucky 40222

DATE: 06.04.13
DRAWN BY: MRO
CHECKED BY:
PROJECT NO. -

REV.	NO.	DATE	ISSUE NOTES

SHEET AT03 OF 4 REVISION

X-X.02 First Printing