

**19200 Stevens Creek Boulevard**  
Cupertino, California

# CUPERTINO OFFICE SPACE FOR LEASE



- Suite 200: ±5,100 SF - Available Now\*
- Suite 240: ±1,551 SF - Available Now

*\* See Suite 200 Existing Floor Plan on Page 2 and Suite 200 Conceptual Plan on Page 3*

- Directly Across from **MAIN<sup>st</sup> CUPERTINO**  
...with ±130K SF Retail (±50K SF Restaurants Including Philz Coffee, Lyfe Kitchen, Oren's Hummus, Alexander's Steakhouse, Lazy Dog, and many others) and 180 Room Marriott Residence Inn Hotel
- Extensive Windowline
- ±4/1000 Parking
- Restrooms and Showers Recently Renovated
- Easy Access to Highways 280 & 85
- Walking Distance to Valco Fashion Park and Other Services
- A Cypress Properties Owned and Managed Building



**Newmark  
Knight Frank**

**Mark Daschbach**  
650.688.8540  
dash@newmarkccarey.com  
CA RE License #00871922

245 Lytton Avenue, Suite 150, Palo Alto, CA 94301

**John McKenna**  
650.688.8548  
jmckenna@newmarkccarey.com  
CA RE License #01276576

Procuring broker shall only be entitled to a commission, calculated in accordance with the rates approved by our principal only if such procuring broker executes a brokerage agreement acceptable to us and our principal and the conditions as set forth in the brokerage agreement are fully and unconditionally satisfied. Although all information furnished regarding property for sale, rental, or financing is from sources deemed reliable, such information has not been verified and no express representation is made nor is any to be implied as to the accuracy thereof and it is submitted subject to errors, omissions, change of price, rental or other conditions, prior sale, lease or financing, or withdrawal without notice and to any special conditions imposed by our principal. 15-1658-10/17

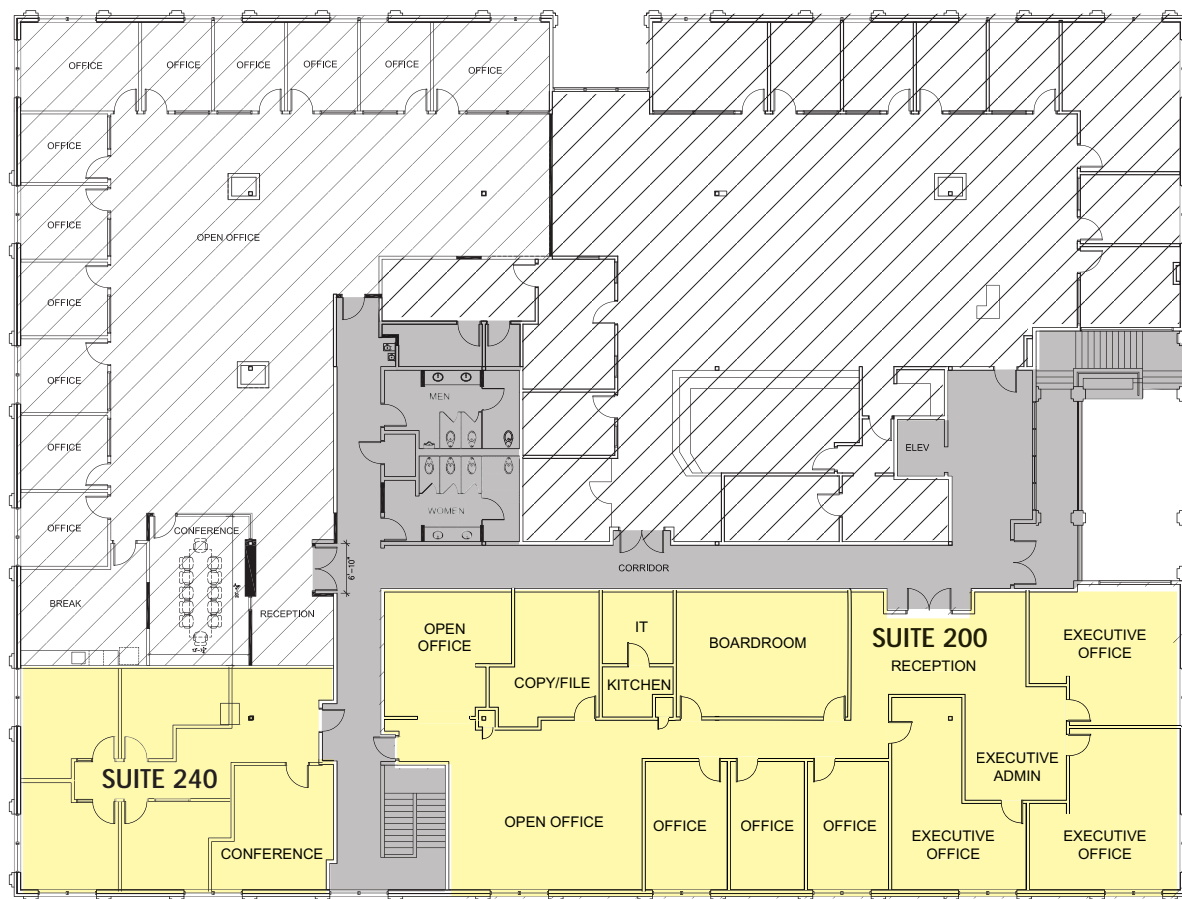


19200 Stevens Creek Boulevard  
Cupertino, California

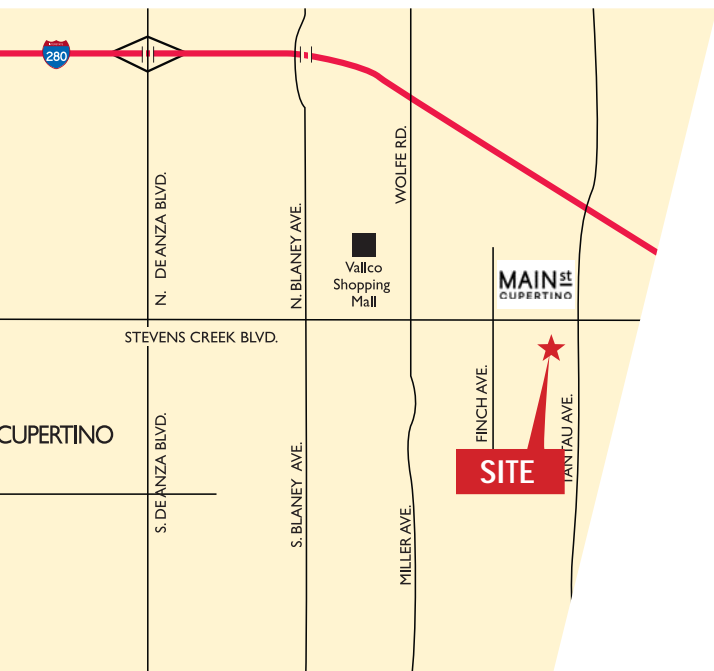
# CUPERTINO OFFICE SPACE FOR LEASE



## FLOORPLAN - SECOND FLOOR



- AVAILABLE
- LEASED
- COMMON AREA



Newmark  
Knight Frank

Mark Daschbach  
650.688.8540  
dash@newmarkccarey.com  
CA RE License #00871922  
245 Lytton Avenue, Suite 150, Palo Alto, CA 94301

John McKenna  
650.688.8548  
jmckenna@newmarkccarey.com  
CA RE License #01276576

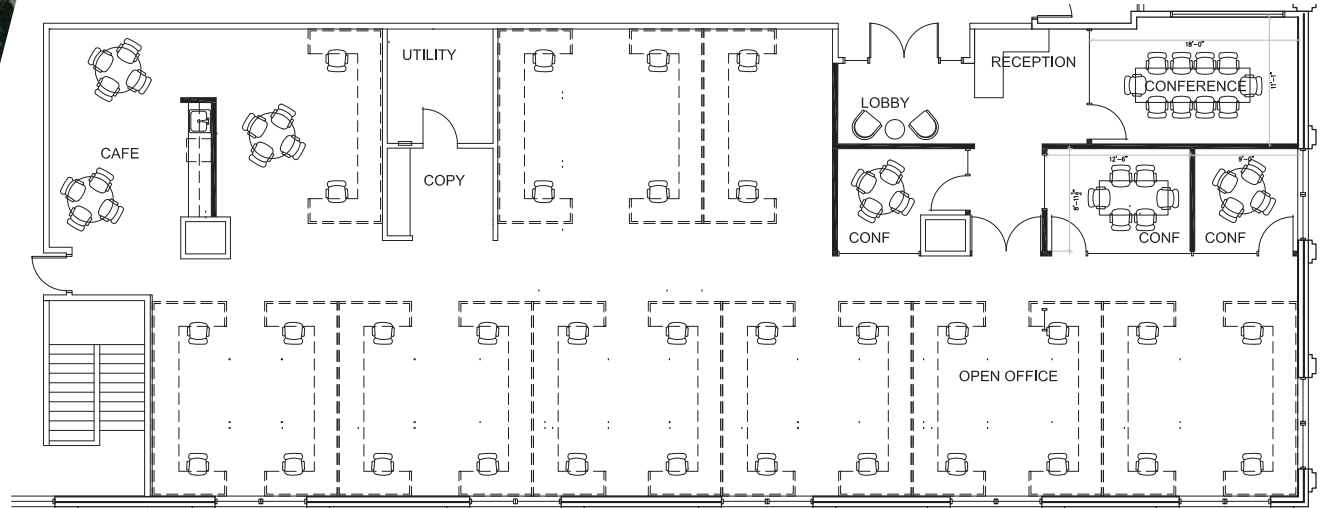
Procuring broker shall only be entitled to a commission, calculated in accordance with the rates approved by our principal only if such procuring broker executes a brokerage agreement acceptable to us and our principal and the conditions as set forth in the brokerage agreement are fully and unconditionally satisfied. Although all information furnished regarding property for sale, rental, or financing is from sources deemed reliable, such information has not been verified and no express representation is made nor is any to be implied as to the accuracy thereof and it is submitted subject to errors, omissions, change of price, rental or other conditions, prior sale, lease or financing, or withdrawal without notice and to any special conditions imposed by our principal.

19200 Stevens Creek Boulevard  
Cupertino, California

# CUPERTINO OFFICE SPACE FOR LEASE



## FLOORPLAN - SUITE 200 CONCEPTUAL PLAN



**Newmark  
Knight Frank**

Mark Daschbach  
650.688.8540  
dash@newmarkccarey.com  
CA RE License #00871922  
245 Lytton Avenue, Suite 150, Palo Alto, CA 94301

John McKenna  
650.688.8548  
jmckenna@newmarkccarey.com  
CA RE License #01276576

Procuring broker shall only be entitled to a commission, calculated in accordance with the rates approved by our principal only if such procuring broker executes a brokerage agreement acceptable to us and our principal and the conditions as set forth in the brokerage agreement are fully and unconditionally satisfied. Although all information furnished regarding property for sale, rental, or financing is from sources deemed reliable, such information has not been verified and no express representation is made nor is any to be implied as to the accuracy thereof and it is submitted subject to errors, omissions, change of price, rental or other conditions, prior sale, lease or financing, or withdrawal without notice and to any special conditions imposed by our principal.



19200 Stevens Creek Boulevard  
Cupertino, California

# CUPERTINO OFFICE SPACE FOR LEASE



**Newmark  
Knight Frank**

**Mark Daschbach**  
650.688.8540  
dash@newmarkccarey.com  
CA RE License #00871922  
245 Lytton Avenue, Suite 150, Palo Alto, CA 94301

**John McKenna**  
650.688.8548  
jmckenna@newmarkccarey.com  
CA RE License #01276576

Procuring broker shall only be entitled to a commission, calculated in accordance with the rates approved by our principal only if such procuring broker executes a brokerage agreement acceptable to us and our principal and the conditions as set forth in the brokerage agreement are fully and unconditionally satisfied. Although all information furnished regarding property for sale, rental, or financing is from sources deemed reliable, such information has not been verified and no express representation is made nor is any to be implied as to the accuracy thereof and it is submitted subject to errors, omissions, change of price, rental or other conditions, prior sale, lease or financing, or withdrawal without notice and to any special conditions imposed by our principal.