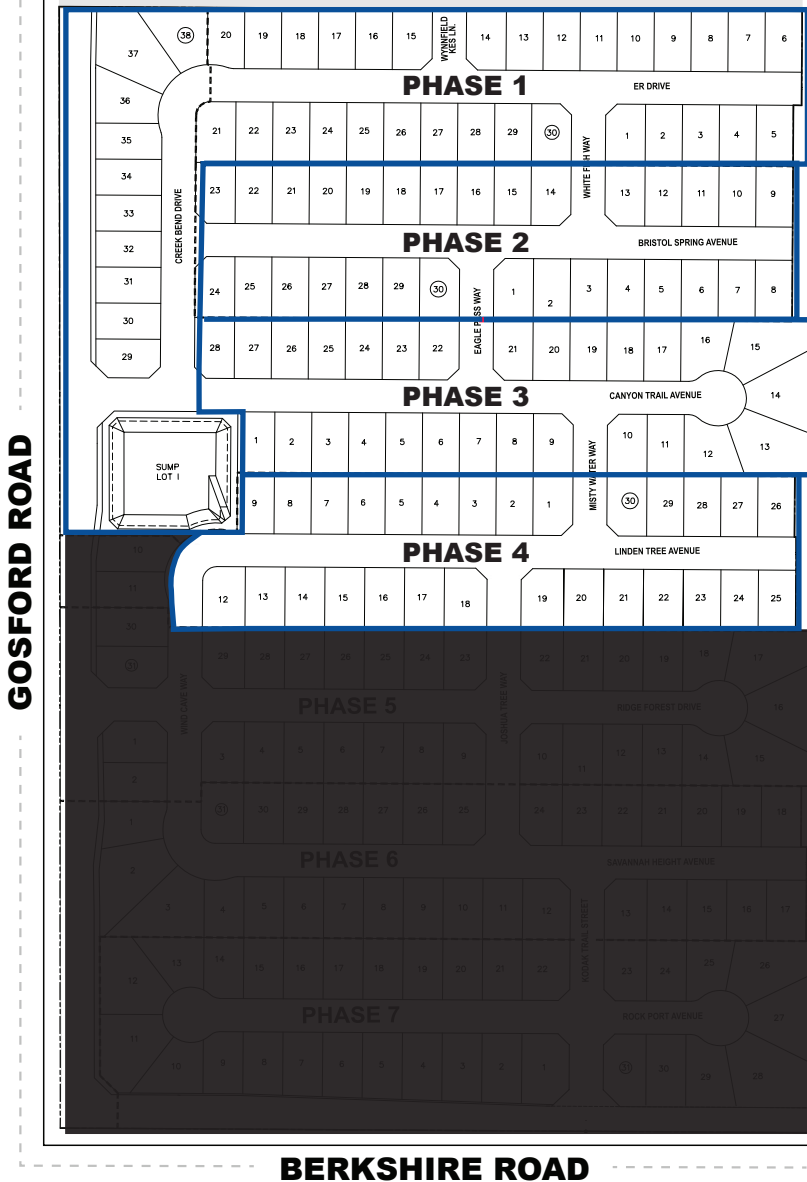


Single Family Residential Lots FOR SALE

SEC Panama Ln & Gosford Rd ▪ Bakersfield, Ca

PANAMA LANE

NOT A PART



PROPERTY FEATURES

LOCATION: SEQ Panama Lane and Gosford Road

MUNICIPALITY: City of Bakersfield, County of Kern

SELLER: Panama Lane Properties, LLC

APN: 539-010-20

ACREAGE: Approximately 32.69 Acres

ZONING: R-1

LOT COUNT: 126 (Phases 1-4)

LOT SIZE: 7,150 min 7,500 Aug - 65 x 110 - 70 x 110 Lots

ASKING PRICE: \$78,000 per lot

TOPOGRAPHY: Relatively Flat

ENTITLEMENT STATUS: Vesting Tentative Tract Map No. 7261 was approved for the subject October 2014

PROPERTY CONDITION: The subject site is currently in the unimproved condition and will be delivered as finished lots

FINAL ENGINEERING: Complete in design

SCHOOL DISTRICT: Lakeside School District
▪ Lakeside School (K-8)

KERN SCHOOL DISTRICT: Kern High School District
▪ Independence High School (9-12), State Rank 3, API 672

TAX INFORMATION: TBD

The southwest Bakersfield is the strongest housing market area in Kern County.

Scott A. Underhill, CRX, SCLS ▪ Principal ▪ 661 616 3575 ▪ scott@asuassociates.com ▪ CA RE #00785728

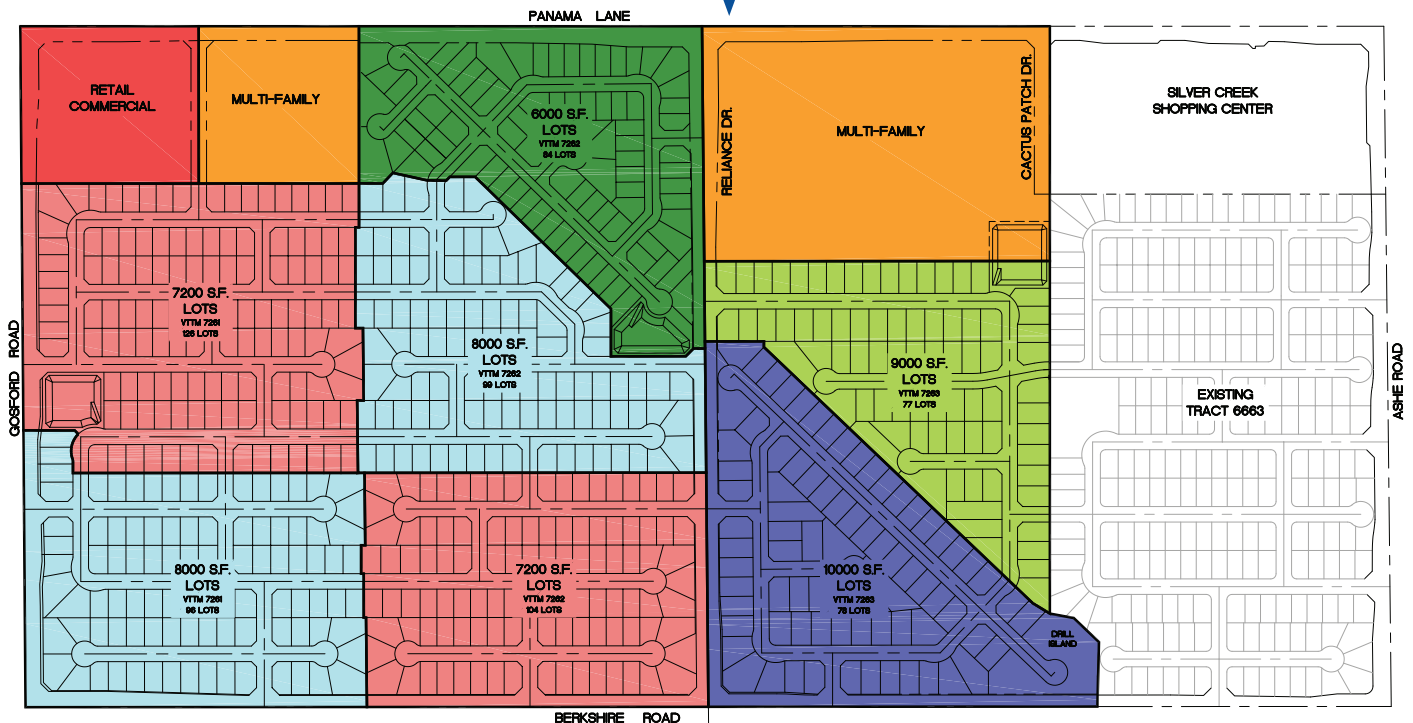
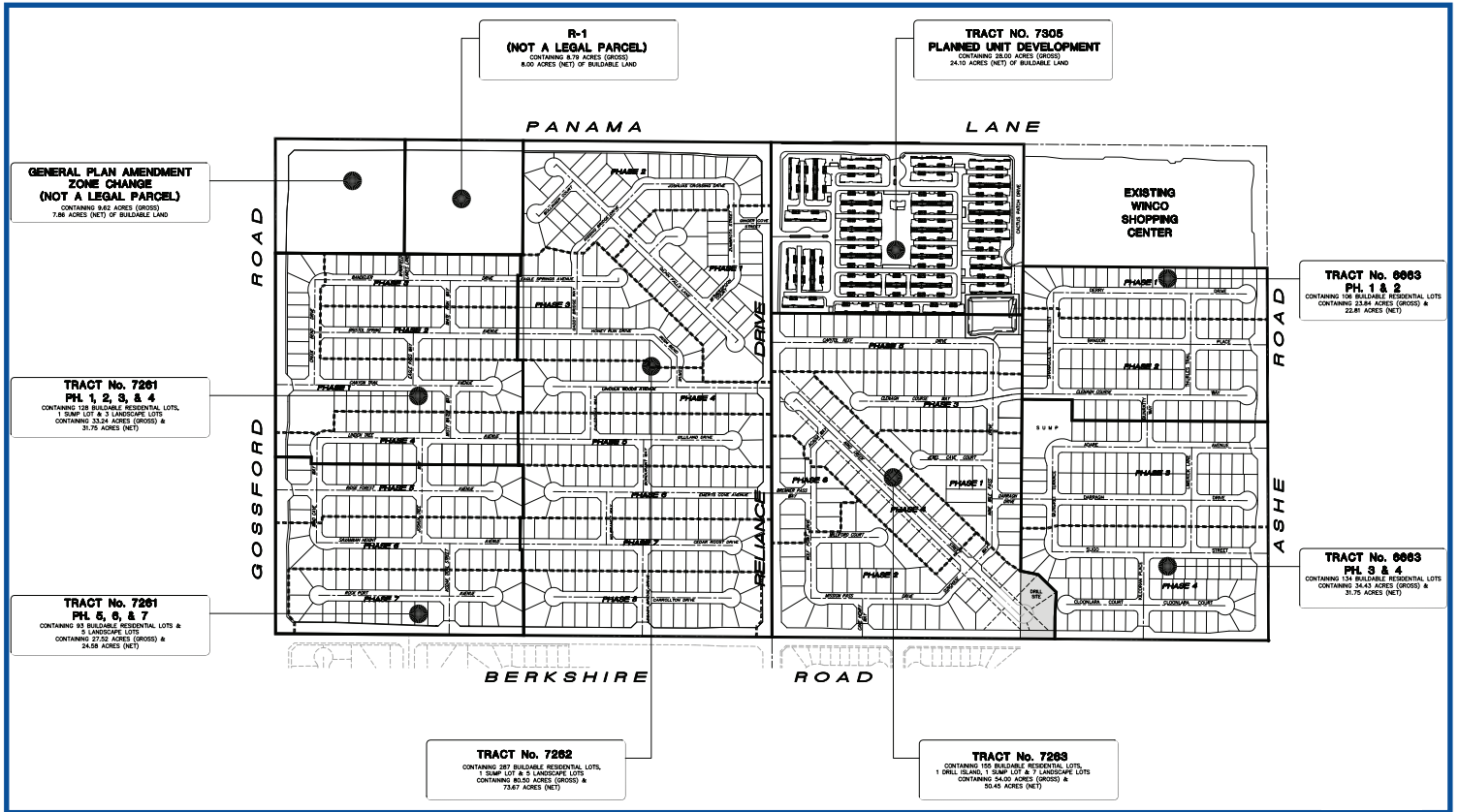
Bryan T. Haupt ▪ Senior Vice President ▪ 661 616 3588 ▪ bhaupt@asuassociates.com ▪ CA RE #00785717

11601 Bolthouse Drive Suite 110 ▪ Bakersfield, CA 93311 ▪ 661 862 5454 main ▪ 661 862 5444 fax

For Sale

SEQ Panama Ln & Gosford Rd ■ Bakersfield, Ca

Tract Maps



For Sale

SEQ Panama Ln & Gosford Rd ▪ Bakersfield, Ca

Aerial Map



Scott A. Underhill, CRX, SCLS ▪ Principal ▪ 661 616 3575 ▪ scott@asuassociates.com ▪ CA RE #00785728
Bryan T. Haupt ▪ Senior Vice President ▪ 661 616 3588 ▪ bthaupt@asuassociates.com ▪ CA RE #00785717
11601 Bolthouse Drive Suite 110 ▪ Bakersfield, CA 93311 ▪ 661 862 5454 main ▪ 661 862 5444 fax

