



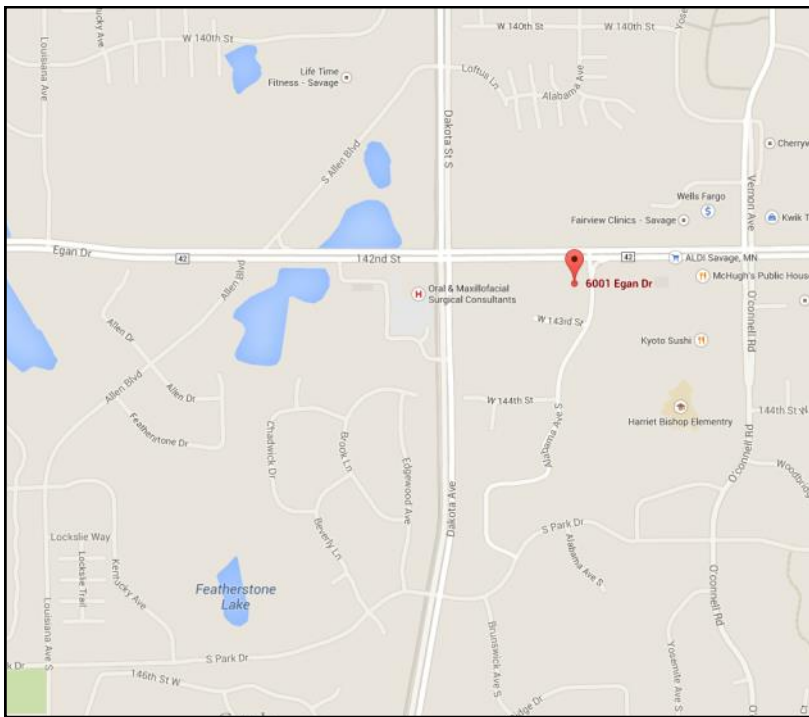
For Lease

Cherrywood Centre 6001 Egan Drive, Savage, MN 55378



Office / Retail Space at Cherrywood Centre

- ◆ **Multiple Suites Available - ranging from approx. 150 SF to approx. 1,485 SF**
- ◆ **Visible to County Rd 42**
- ◆ **Traffic counts: 30,000 cars/day**
- ◆ **Office & Retail frontage space**
- ◆ **Pylon signage available**
- ◆ **Next to O'Connell Square**
- ◆ **Lunch room available**



For more information, contact:

Bruce Rydeen
952.469.9444 brucer@cerron.com

**Visit our website to view this property in more detail or other properties Cerron has available at:
www.CERRON.com**

Creating Property Solutions For You... With You

The information contained herein is deemed reliable but is not guaranteed. We have not verified its accuracy nor do we make any warranty or representation about it. You and your tax and legal advisors should conduct your own investigation of the property and transaction.

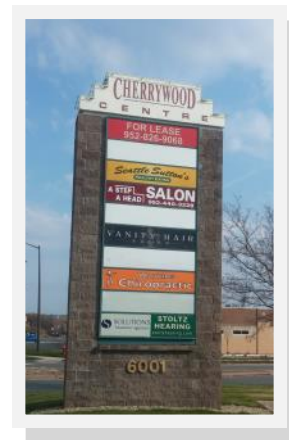


Spaces Available

6001 Egan Drive, Savage, MN 55378

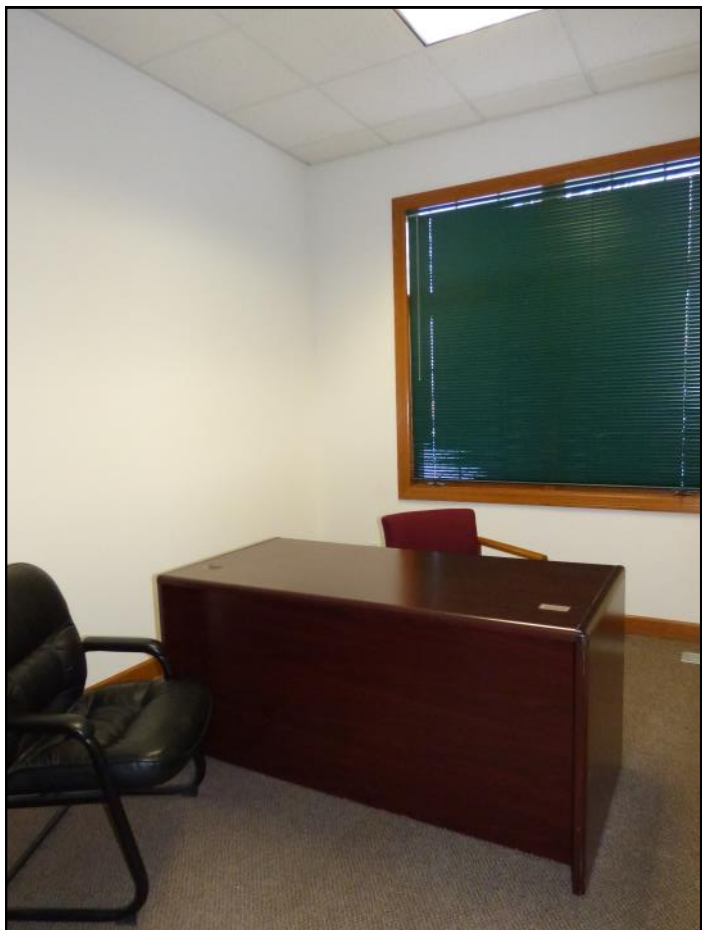
Cherrywood Centre Available Lease Space

| Suite | Approx. Square Feet | Gross Lease Rate/Month |
|-------|---------------------|------------------------|
| 110 | 1,485 | \$2,440.00 |
| 130 | 870 | \$1,400.00 |
| 194 | 150 | \$ 430.00 |



Creating Property Solutions For You... With You

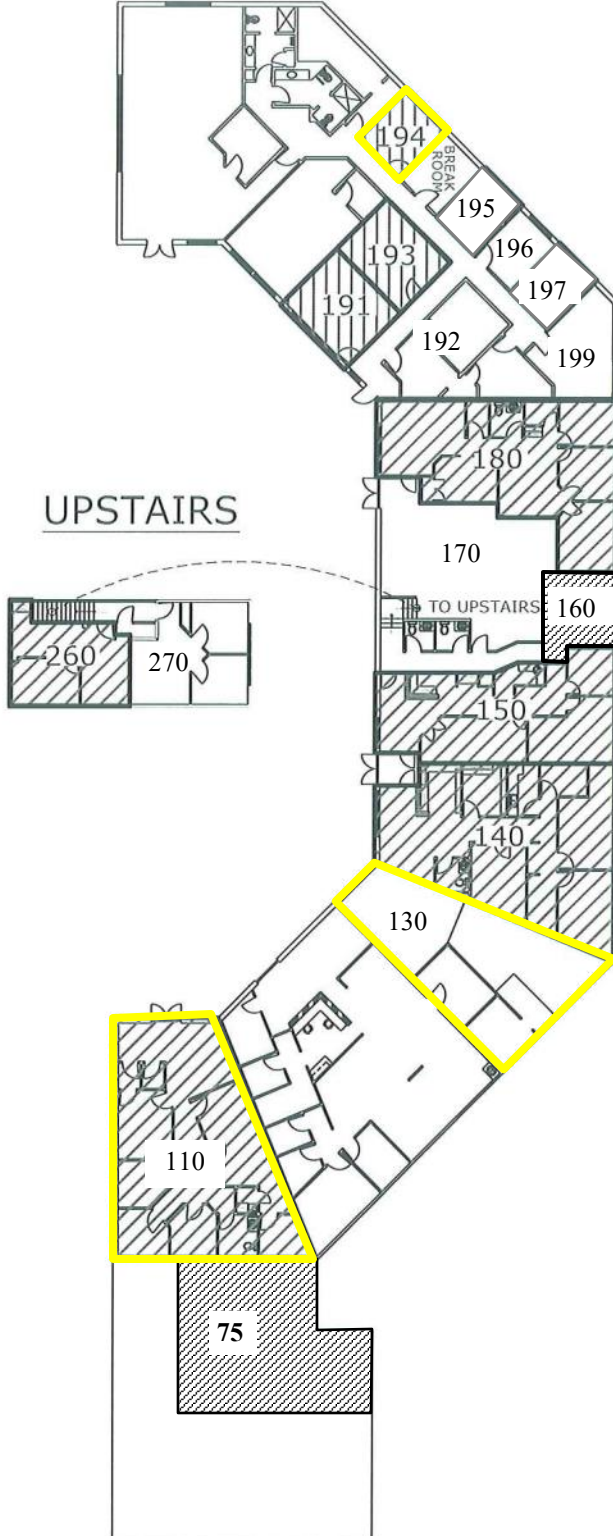
The information contained herein is deemed reliable but is not guaranteed. We have not verified its accuracy nor do we make any warranty or representation about it. You and your tax and legal advisors should conduct your own investigation of the property and transaction.





Overall Layout

6001 Egan Drive, Savage, MN 55378



 AVAILABLE SUITES



This layout shows which suites are available and is not to scale.

Creating Property Solutions For You... With You

The information contained herein is deemed reliable but is not guaranteed. We have not verified its accuracy nor do we make any warranty or representation about it. You and your tax and legal advisors should conduct your own investigation of the property and transaction.