

1402-1404

CONEY ISLAND AVENUE
MIDWOOD, BROOKLYN

Between Avenue J & Avenue K

RETAIL FOR LEASE

APPROXIMATE SIZE

Ground Floor: 5,400 SF
Basement: 5,400 SF

ASKING RENT

\$35 PSF

TERM

Negotiable

FRONTAGE

60 FT

POSSESSION

Arranged

COMMENTS

- 14' ceilings on the Ground Floor
10' ceilings in the basement
- 60' Frontage
- Major Visibility
- Huge Signage Opportunity
- Modern Build-Out
- Potential to include 2nd Floor
- One block from new development with over 60,000 SF of Retail and Office space

NEIGHBORS

TD bank • Chase Bank • The Orchard • U.S. Post Office • Yeshivah of Flatbush • Eichler's • Essen on Coney • Brooklyn Artisan Bakehouse • Bakar Steakhouse • Perizia Pizza • Toast • Bagel Hole • Milan Collection • Gigj • Sarrel • Esti's Wigs • Olympic Pita • Citibank • Capital one

TRANSPORTATION

B68, B6, B11 Bus Lines



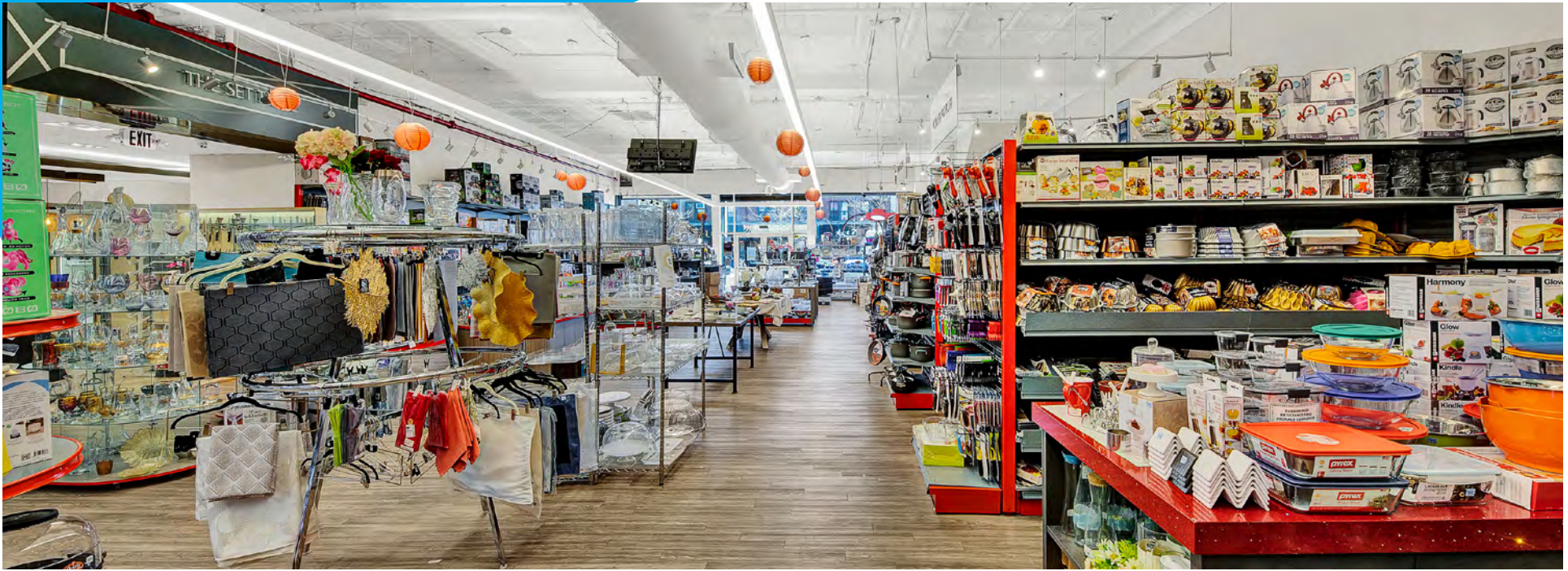
JAMES FAMULARO
President

ELIOT GOLDSCHMIDT
Director
eg@meridiancapital.com
646.658.7397

JOSEPH E. HARARY
Associate
jh@meridiancapital.com
212.468.5978



All information supplied is from sources deemed reliable and is furnished subject to errors, omissions, modifications, removal of the listing from sale or lease, and to any listing conditions, including the rates and manner of payment of commissions for particular offerings imposed by Meridian Capital Group. This information may include estimates and projections prepared by Meridian Capital Group with respect to future events, and these future events may or may not actually occur. Such estimates and projections reflect various assumptions concerning anticipated results. While Meridian Capital Group believes these assumptions are reasonable, there can be no assurance that any of these estimates and projections will be correct. Therefore, actual results may vary materially from these estimates and projections. Any square footage dimensions set forth are approximate.



INTERIOR

JAMES FAMULARO
President

ELIOT GOLDSCHMIDT
Director
eg@meridiancapital.com
646.658.7397















JOSEPH E. HARARY
Associate
jh@meridiancapital.com
212.468.5978



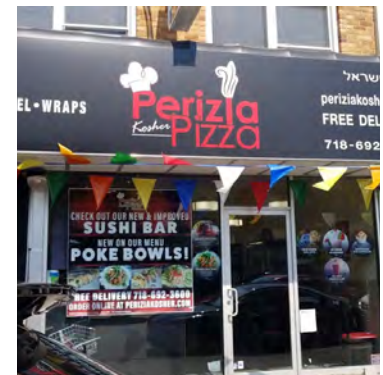
1402-1404 CONEY ISLAND AVENUE

MIDWOOD, BROOKLYN | Between Avenue J & Avenue K

RETAIL FOR LEASE

E TENTH STREET	 EYEGLASSES 99 OPTICAL	RUNWAY  CHASE	E TWELFTH ST
	 CHOCOLATTE ESPRESSO BAR BASIC COLORS	 TD Bank  SHOEPALACE  Essex NEW YORK Deli THE ORCHARD The Finest in Gourmet Fruits For Over 50 Years  BAKEHOUSE & CAFE BAKAR TOAST WELL DONE  Perizja Pizza EICHLER'S RELIGIOUS ARTICLES & GIFTS ACT 7  Happy Home SARREL WIGS	
CONEY ISLAND AVE	 HARRICE GALLER Drug Corp HOSIERY PLUS EYE-SITE OPTICAL	 MASBIA OF FLATBUSH  Love Berry	
	 ESTI custom wigs UNIQUE BOUTIQUE GIGI BEAUTY SALON	WILD ORCHID OLYMPIC PITA KOSHER BAGEL HOLE  MIDWOOD WINE & LIQUORS WILD ORCHID	
	PINO'S HAIR SALON	AVENUE K	

1402-1404
CONEY ISLAND AVENUE



YOUR NEIGHBORS

JAMES FAMULARO
President

ELIOT GOLDSCHMIDT
Director
eg@meridiancapital.com
646.658.7397

JOSEPH E. HARARY
Associate
jh@meridiancapital.com
212.468.5978

MERIDIAN
RETAIL LEASING

All information supplied is from sources deemed reliable and is furnished subject to errors, omissions, modifications, removal of the listing from sale or lease, and to any listing conditions, including the rates and manner of payment of commissions for particular offerings imposed by Meridian Capital Group. This information may include estimates and projections prepared by Meridian Capital Group with respect to future events, and these future events may or may not actually occur. Such estimates and projections reflect various assumptions concerning anticipated results. While Meridian Capital Group believes these assumptions are reasonable, there can be no assurance that any of these estimates and projections will be correct. Therefore, actual results may vary materially from these estimates and projections. Any square footage dimensions set forth are approximate.