

GOLDEN TOWN CENTER- PAD SITE

GOLDEN ROAD & ULYSSES STREET | GOLDEN, CO 80401

GOLDEN TOWN CENTER

LAST PAD AVAILABLE: LOT 3C - 36,617 SF



GOLDEN ROAD & ULYSSES STREET | GOLDEN, COLORADO

PROPERTY HIGHLIGHTS

- Last pad site available in this King Soopers-anchored center on S. Golden Road
- Strong visibility to Golden Road
- Join Chase Bank, Sonic, Advance Auto Parts, and others

DEMOGRAPHICS

	1 MILE	3 MILE	5 MILE
Est Population	6,038	39,190	102,725
Avg HH Income	\$57,005	\$83,618	\$86,225
Employees	6,889	39,161	78,546
Businesses	375	2,771	6,527

TRAFFIC COUNTS

Source: DRCOG, *City of Golden 2011

On Golden Rd northwest of Ulysses St 15,901 cars/day

On Golden Rd southeast of Ulysses St 12,216 cars/day

* On Ulysses St south of Golden Rd 2,555 cars/day

5570 DTC PARKWAY, SUITE 100 | GREENWOOD VILLAGE, CO 80111 | 303.534.0900 | WWW.SULLIVANHAYES.COM

SullivanHayes
B R O K E R A G E

we are
RETAIL CHAINLINKS
RETAIL ADVISORS

Emily Klimas

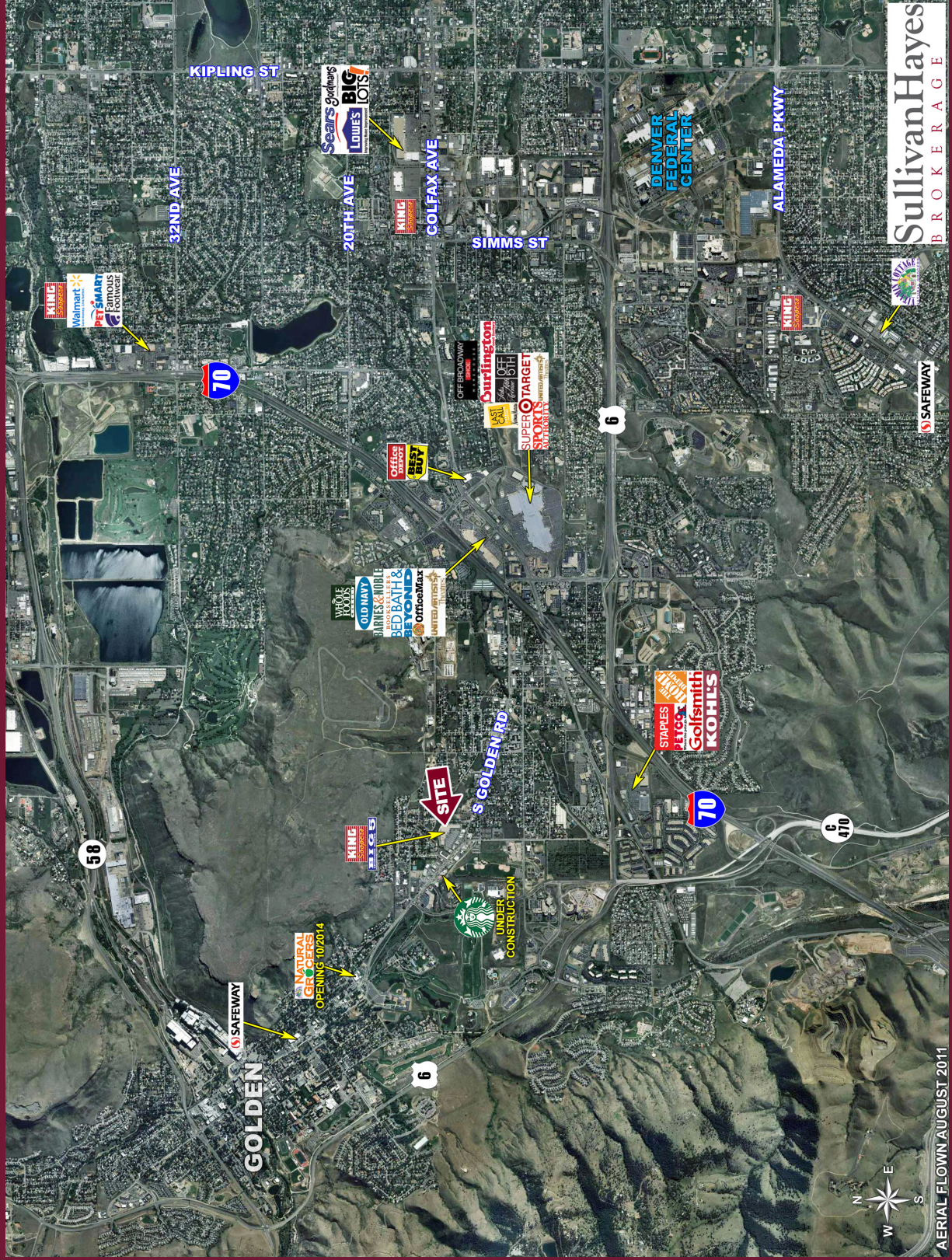
303.370.7475 | eklimas@sullivanhayes.com

John Liprando

303.370.7469 | jliprando@sullivanhayes.com

GOLDEN TOWN CENTER

LAST PAD AVAILABLE - LOT 3C - 36,617 SF



The information contained herein has been compiled from sources believed to be reliable. However, SullivanHayes has not independently verified the same and makes no guarantee, warranty or representation about such information. Any opinions, assumptions or projections used are for illustrative purposes only and do not necessarily represent the current or future performance of the property. Site plans, renderings, aerials, marketing data, pricing and other terms are subject to change at any time. You and your tax, financial and legal advisors should make a thorough independent investigation of the property to determine its suitability to your needs. SullivanHayes, its broker associates and its salespersons, are or will be acting as agents of the seller/lessor with the duty to represent the interests of the seller/lessor. SullivanHayes is signed and in effect.

SullivanHayes
B R O K E R A G E