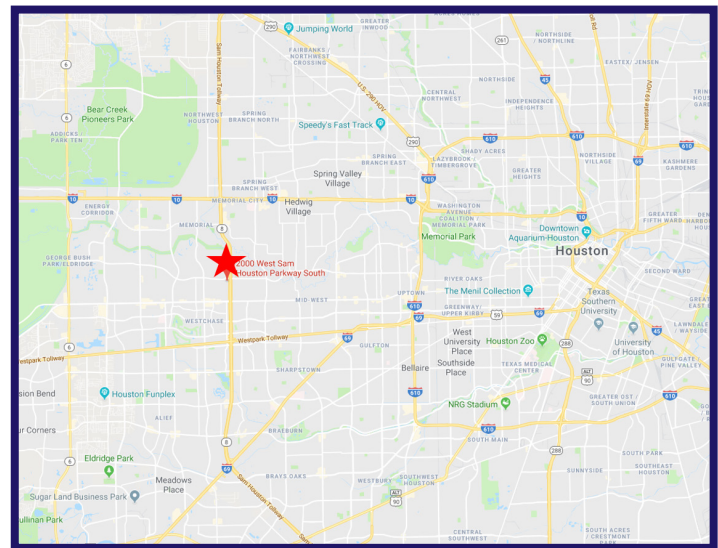




## 2000 W Sam Houston Pkwy South - One BriarLake Plaza

*Sublease Thru December 2021*

- **Rental Rate - Negotiable**
- **Lease Expiration 12/31/2021**
- Furniture Included
- Onsite Deli
- Free Visitor Parking
- LEED Certified Gold
- Fitness Center



Partnership. Performance.

**Valentino Festari, Senior Associate**  
713.993.7838  
valentino.festari@avisonyoung.com

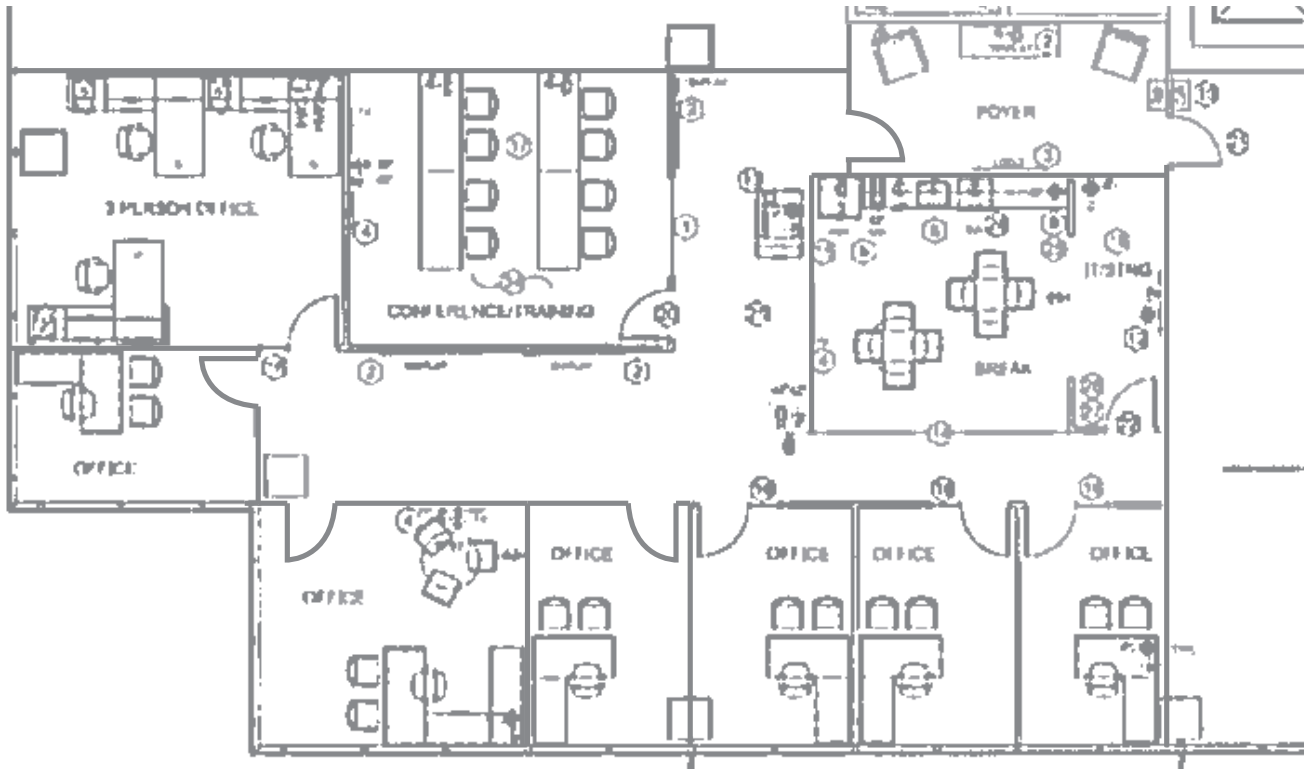
**Charlie Neuhaus, Principal**  
713.993.7160  
charlie.neuhaus@avisonyoung.com



*Ideally located in the Westchase submarket of Houston. With excellent access provided by the Sam Houston Parkway at Briar Forest Drive, BriarLake Plaza is located less than 25 minutes to 9 of the largest residential areas in the city and both of Houston's major airports. The building's exterior features a combination of reflective and semireflective insulated glass with metallic aluminum accent curtain walls and flame finished granite plazas.*

## Floor Plan

14th Floor - 3,369 SF



Conference Room

Partnership. Performance.

For More Information:

**Valentino Festari, Senior Associate**

713.993.7838

[valentino.festari@avisonyoung.com](mailto:valentino.festari@avisonyoung.com)

**Charlie Neuhaus, Principal**

713.993.7160

[charlie.neuhaus@avisonyoung.com](mailto:charlie.neuhaus@avisonyoung.com)