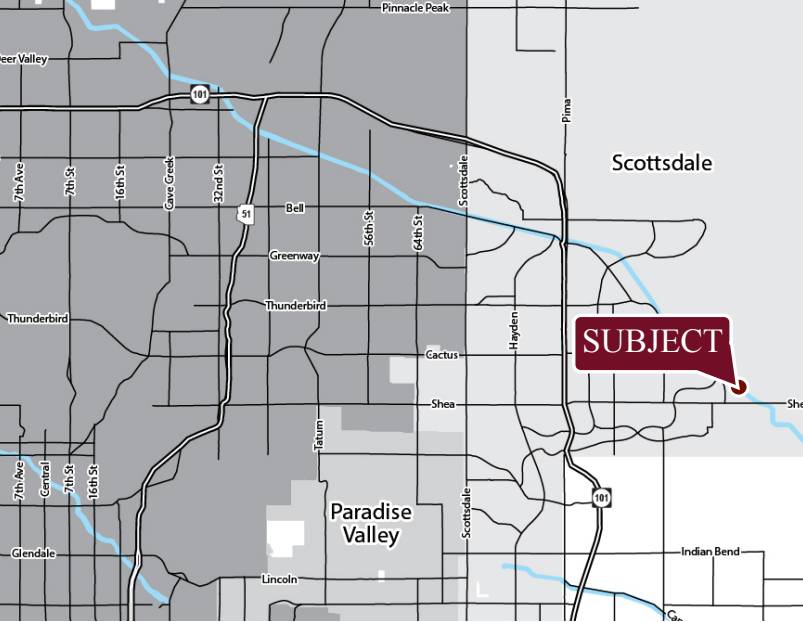


# MOUNTAINSIDE PLAZA

NEC 116TH STREET & SHEA BLVD.  
SCOTTSDALE, AZ



## ENDCAP SPACE AVAILABLE

### AVAILABILITY

- 1,008 SF
- 1,074 SF
- 2,484 SF
- 2,715 SF

### FEATURES

- 16,702 SF OF SHOPS
- END CAP AVAILABLE
- JOIN MOUNTAINSIDE FITNESS & COLD BEER & CHEESEBURGERS!
- BLACK ROCK COFFEE COMING SOON!
- DESTINATION CENTER
- ONLY RETAIL IN AREA AVAILABLE ON SHEA BLVD.

### NOTABLE TENANTS IN TRADE AREA



2018 Demographics	1 MILE	3 MILE	5 MILE
Estimated Population	9,623	39,229	92,318
Avg. Household Income	\$131,654	\$158,186	\$154,274
Daytime Employment	2,695	17,322	77,760



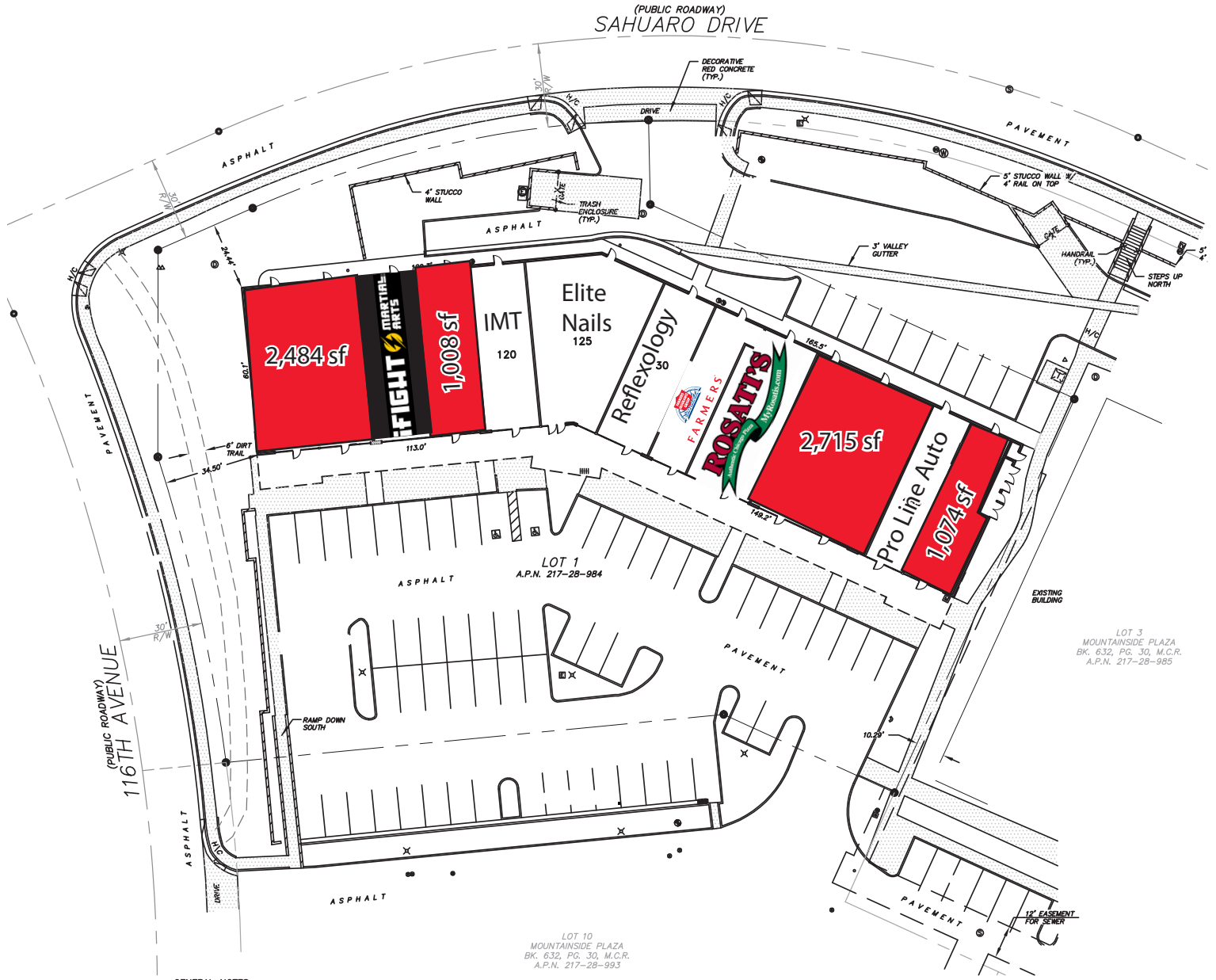
**STRATEGIC**

DAVID JARAND  
602.778.3834  
davidj@srgaz.com

# ENDCAP SPACE AVAILABLE

## MOUNTAINSIDE PLAZA

NEC 116TH STREET & SHEA BLVD.  
SCOTTSDALE, AZ



DAVID JARAND  
602.778.3834  
davidj@srgaz.com

15169 N. Scottsdale Road #330 Scottsdale, AZ 85254 602.778.3838(p) 602.778.3839(f) www.srgaz.com

# ENDCAP SPACE AVAILABLE

## MOUNTAINSIDE PLAZA

NEC 116TH STREET & SHEA BLVD.  
SCOTTSDALE, AZ



DAVID JARAND  
602.778.3834  
davidj@srgaz.com

# EXPANDED PROFILE

2000-2010 Census, 2018 Estimates with 2023 Projections

Calculated using Weighted Block Centroid from Block Groups

Lat/Lon: 33.5825/-111.8307

RF5

E Shea Blvd & N 116th St		1 mi radius	3 mi radius	5 mi radius
<b>Population</b>				
Estimated Population (2018)		9,623	39,229	92,318
Projected Population (2023)		10,403	42,397	99,808
Census Population (2010)		9,037	36,207	85,725
Census Population (2000)		8,674	35,269	82,278
Projected Annual Growth (2018 to 2023)		780 1.6%	3,168 1.6%	7,490 1.6%
Historical Annual Growth (2010 to 2018)		586 0.8%	3,022 1.0%	6,593 1.0%
Historical Annual Growth (2000 to 2010)		363 0.4%	938 0.3%	3,447 0.4%
Estimated Population Density (2018)		3,065 <i>psm</i>	1,388 <i>psm</i>	1,176 <i>psm</i>
Trade Area Size		3.14 <i>sq mi</i>	28.26 <i>sq mi</i>	78.51 <i>sq mi</i>
<b>Households</b>				
Estimated Households (2018)		4,594	17,565	43,252
Projected Households (2023)		4,796	18,390	45,285
Census Households (2010)		4,202	15,811	39,234
Census Households (2000)		3,719	14,483	35,097
Estimated Households with Children (2018)		1,003 21.8%	4,170 23.7%	9,436 21.8%
Estimated Average Household Size (2018)		2.09	2.23	2.13
<b>Average Household Income</b>				
Estimated Average Household Income (2018)		\$131,654	\$158,186	\$154,274
Projected Average Household Income (2023)		\$153,644	\$186,505	\$182,366
Estimated Average Family Income (2018)		\$182,631	\$204,072	\$199,934
<b>Median Household Income</b>				
Estimated Median Household Income (2018)		\$102,281	\$114,594	\$108,208
Projected Median Household Income (2023)		\$115,946	\$131,519	\$124,756
Estimated Median Family Income (2018)		\$152,726	\$153,165	\$143,529
<b>Per Capita Income</b>				
Estimated Per Capita Income (2018)		\$62,859	\$70,853	\$72,312
Projected Per Capita Income (2023)		\$70,847	\$80,921	\$82,773
Estimated Per Capita Income 5 Year Growth		\$7,988 12.7%	\$10,068 14.2%	\$10,460 14.5%
Estimated Average Household Net Worth (2018)		\$1,570,249	\$1,861,783	\$1,696,896
<b>Daytime Demos (2018)</b>				
Total Businesses		458	1,614	7,362
Total Employees		2,695	17,322	77,760
Company Headquarter Businesses		- -	4 0.2%	72 1.0%
Company Headquarter Employees		- -	2,833 16.4%	13,403 17.2%
Employee Population per Business		5.9	10.7	10.6
Residential Population per Business		21.0	24.3	12.5

This report was produced using data from private and government sources deemed to be reliable. The information herein is provided without representation or warranty.

# EXPANDED PROFILE

2000-2010 Census, 2018 Estimates with 2023 Projections

Calculated using Weighted Block Centroid from Block Groups

Lat/Lon: 33.5825/-111.8307

RFS

E Shea Blvd & N 116th St		1 mi radius		3 mi radius		5 mi radius	
<b>Race &amp; Ethnicity</b>							
White (2018)		8,150	84.7%	33,974	86.6%	79,338	85.9%
Black or African American (2018)		315	3.3%	1,067	2.7%	2,524	2.7%
American Indian or Alaska Native (2018)		77	0.8%	187	0.5%	543	0.6%
Asian (2018)		519	5.4%	2,101	5.4%	5,355	5.8%
Hawaiian or Pacific Islander (2018)		13	0.1%	26	0.1%	82	0.1%
Other Race (2018)		197	2.1%	588	1.5%	1,501	1.6%
Two or More Races (2018)		352	3.7%	1,286	3.3%	2,976	3.2%
Not Hispanic or Latino Population (2018)		8,516	88.5%	35,128	89.5%	82,806	89.7%
Hispanic or Latino Population (2018)		1,107	11.5%	4,101	10.5%	9,512	10.3%
Not Hispanic or Latino Population (2023)		9,067	87.2%	37,386	88.2%	88,205	88.4%
Hispanic or Latino Population (2023)		1,336	12.8%	5,011	11.8%	11,603	11.6%
Not Hispanic or Latino Population (2010)		8,509	94.2%	34,418	95.1%	81,277	94.8%
Hispanic or Latino Population (2010)		528	5.8%	1,789	4.9%	4,448	5.2%
Not Hispanic or Latino Population (2000)		8,280	95.5%	34,027	96.5%	79,294	96.4%
Hispanic or Latino Population (2000)		394	4.5%	1,242	3.5%	2,984	3.6%
Projected Hispanic Annual Growth (2018 to 2023)		229	4.1%	910	4.4%	2,090	4.4%
Historic Hispanic Annual Growth (2000 to 2018)		712	10.0%	2,859	12.8%	6,529	12.2%
<b>Age Distribution (2018)</b>							
Age Under 5		385	4.0%	1,515	3.9%	3,799	4.1%
Age 5 to 9 Years		483	5.0%	1,983	5.1%	4,587	5.0%
Age 10 to 14 Years		557	5.8%	2,351	6.0%	5,161	5.6%
Age 15 to 19 Years		566	5.9%	2,255	5.7%	4,714	5.1%
Age 20 to 24 Years		463	4.8%	1,523	3.9%	3,747	4.1%
Age 25 to 29 Years		571	5.9%	1,816	4.6%	5,032	5.5%
Age 30 to 34 Years		515	5.4%	1,776	4.5%	4,903	5.3%
Age 35 to 39 Years		523	5.4%	2,026	5.2%	5,318	5.8%
Age 40 to 44 Years		586	6.1%	2,411	6.1%	5,710	6.2%
Age 45 to 49 Years		742	7.7%	2,998	7.6%	6,797	7.4%
Age 50 to 54 Years		735	7.6%	3,224	8.2%	7,008	7.6%
Age 55 to 59 Years		753	7.8%	3,367	8.6%	7,500	8.1%
Age 60 to 64 Years		730	7.6%	3,161	8.1%	7,233	7.8%
Age 65 to 74 Years		1,158	12.0%	5,189	13.2%	11,919	12.9%
Age 75 to 84 Years		666	6.9%	2,758	7.0%	6,421	7.0%
Age 85 Years or Over		190	2.0%	876	2.2%	2,470	2.7%
Median Age		44.9		47.3		46.4	
<b>Gender Age Distribution (2018)</b>							
Female Population		4,997	51.9%	20,498	52.3%	48,379	52.4%
Age 0 to 19 Years		988	19.8%	4,055	19.8%	9,029	18.7%
Age 20 to 64 Years		2,933	58.7%	11,751	57.3%	28,060	58.0%
Age 65 Years or Over		1,077	21.5%	4,692	22.9%	11,289	23.3%
Female Median Age		45.8		48.0		47.5	
Male Population		4,626	48.1%	18,731	47.7%	43,939	47.6%
Age 0 to 19 Years		1,005	21.7%	4,049	21.6%	9,231	21.0%
Age 20 to 64 Years		2,684	58.0%	10,550	56.3%	25,188	57.3%
Age 65 Years or Over		937	20.3%	4,131	22.1%	9,520	21.7%
Male Median Age		44.0		46.6		45.3	

This report was produced using data from private and government sources deemed to be reliable. The information herein is provided without representation or warranty.

# EXPANDED PROFILE

2000-2010 Census, 2018 Estimates with 2023 Projections

Calculated using Weighted Block Centroid from Block Groups

Lat/Lon: 33.5825/-111.8307

RF5

E Shea Blvd & N 116th St		1 mi radius		3 mi radius		5 mi radius	
<b>Household Income Distribution (2018)</b>							
HH Income \$200,000 or More	962	20.9%	4,467	25.4%	9,469	21.9%	
HH Income \$150,000 to \$199,999	371	8.1%	1,741	9.9%	4,415	10.2%	
HH Income \$100,000 to \$149,999	583	12.7%	2,604	14.8%	7,344	17.0%	
HH Income \$75,000 to \$99,999	505	11.0%	1,691	9.6%	5,179	12.0%	
HH Income \$50,000 to \$74,999	840	18.3%	2,523	14.4%	6,024	13.9%	
HH Income \$35,000 to \$49,999	534	11.6%	1,801	10.3%	4,411	10.2%	
HH Income \$25,000 to \$34,999	355	7.7%	1,041	5.9%	2,420	5.6%	
HH Income \$15,000 to \$24,999	222	4.8%	755	4.3%	1,808	4.2%	
HH Income Under \$15,000	221	4.8%	942	5.4%	2,182	5.0%	
HH Income \$35,000 or More	3,795	82.6%	14,826	84.4%	36,842	85.2%	
HH Income \$75,000 or More	2,421	52.7%	10,503	59.8%	26,407	61.1%	
<b>Housing (2018)</b>							
Total Housing Units	4,942		19,350		47,880		
Housing Units Occupied	4,594	93.0%	17,565	90.8%	43,252	90.3%	
Housing Units Owner-Occupied	2,757	60.0%	12,983	73.9%	29,784	68.9%	
Housing Units, Renter-Occupied	1,836	40.0%	4,582	26.1%	13,469	31.1%	
Housing Units, Vacant	348	7.0%	1,786	9.2%	4,628	9.7%	
<b>Marital Status (2018)</b>							
Never Married	2,297	28.0%	8,053	24.1%	19,173	24.3%	
Currently Married	4,211	51.4%	18,715	56.1%	42,918	54.5%	
Separated	218	2.7%	808	2.4%	1,902	2.4%	
Widowed	456	5.6%	1,871	5.6%	4,676	5.9%	
Divorced	1,016	12.4%	3,931	11.8%	10,103	12.8%	
<b>Household Type (2018)</b>							
Population Family	7,270	75.5%	31,493	80.3%	70,714	76.6%	
Population Non-Family	2,343	24.3%	7,621	19.4%	21,227	23.0%	
Population Group Quarters	10	0.1%	115	0.3%	377	0.4%	
Family Households	2,578	56.1%	11,078	63.1%	25,294	58.5%	
Non-Family Households	2,016	43.9%	6,487	36.9%	17,958	41.5%	
Married Couple with Children	685	16.3%	3,169	16.9%	6,934	16.2%	
Average Family Household Size	2.8		2.8		2.8		
<b>Household Size (2018)</b>							
1 Person Households	1,728	37.6%	5,470	31.1%	15,018	34.7%	
2 Person Households	1,674	36.4%	6,877	39.1%	16,766	38.8%	
3 Person Households	534	11.6%	2,275	13.0%	5,148	11.9%	
4 Person Households	433	9.4%	1,953	11.1%	4,296	9.9%	
5 Person Households	161	3.5%	713	4.1%	1,470	3.4%	
6 or More Person Households	65	1.4%	278	1.6%	554	1.3%	
<b>Household Vehicles (2018)</b>							
Households with 0 Vehicles Available	114	2.5%	439	2.5%	1,228	2.8%	
Households with 1 Vehicles Available	1,805	39.3%	6,134	34.9%	16,388	37.9%	
Households with 2 or More Vehicles Available	2,674	58.2%	10,991	62.6%	25,636	59.3%	
Total Vehicles Available	8,368		33,119		77,803		
Average Vehicles Per Household	1.8		1.9		1.8		

This report was produced using data from private and government sources deemed to be reliable. The information herein is provided without representation or warranty.

# EXPANDED PROFILE

2000-2010 Census, 2018 Estimates with 2023 Projections

Calculated using Weighted Block Centroid from Block Groups

Lat/Lon: 33.5825/-111.8307

RF5

E Shea Blvd & N 116th St		1 mi radius	3 mi radius	5 mi radius
<b>Labor Force (2018)</b>				
Estimated Labor Population Age 16 Years or Over		8,077	32,887	77,746
Estimated Civilian Employed		5,272 65.3%	20,040 60.9%	48,950 63.0%
Estimated Civilian Unemployed		142 1.8%	519 1.6%	1,227 1.6%
Estimated in Armed Forces		-	-	-
Estimated Not in Labor Force		2,663 33.0%	12,328 37.5%	27,569 35.5%
Unemployment Rate		1.8%	1.6%	1.6%
<b>Occupation (2015)</b>				
Occupation: Population Age 16 Years or Over		5,454	20,036	49,156
Management, Business, Financial Operations		1,323 24.3%	5,431 27.1%	13,222 26.9%
Professional, Related		1,533 28.1%	5,443 27.2%	13,694 27.9%
Service		831 15.2%	2,614 13.0%	6,249 12.7%
Sales, Office		1,320 24.2%	5,079 25.3%	12,517 25.5%
Farming, Fishing, Forestry		2 -	15 0.1%	77 0.2%
Construct, Extraction, Maintenance		171 3.1%	546 2.7%	1,256 2.6%
Production, Transport Material Moving		274 5.0%	907 4.5%	2,142 4.4%
White Collar Workers		4,176 76.6%	15,953 79.6%	39,433 80.2%
Blue Collar Workers		1,278 23.4%	4,083 20.4%	9,723 19.8%
<b>Consumer Expenditure (2018)</b>				
Total Household Expenditure		\$392 M	\$1.73 B	\$4.18 B
Total Non-Retail Expenditure		\$209 M 53.3%	\$931 M 53.7%	\$2.23 B 53.5%
Total Retail Expenditure		\$183 M 46.7%	\$804 M 46.3%	\$1.94 B 46.5%
Apparel		\$13.9 M 3.5%	\$61.6 M 3.6%	\$148 M 3.5%
Contributions		\$21.0 M 5.4%	\$97.1 M 5.6%	\$228 M 5.4%
Education		\$17.0 M 4.3%	\$78.5 M 4.5%	\$186 M 4.5%
Entertainment		\$22.3 M 5.7%	\$99.1 M 5.7%	\$238 M 5.7%
Food and Beverages		\$55.0 M 14.0%	\$240 M 13.8%	\$581 M 13.9%
Furnishings and Equipment		\$14.0 M 3.6%	\$62.8 M 3.6%	\$151 M 3.6%
Gifts		\$11.1 M 2.8%	\$50.8 M 2.9%	\$121 M 2.9%
Health Care		\$29.3 M 7.5%	\$127 M 7.3%	\$309 M 7.4%
Household Operations		\$12.4 M 3.2%	\$56.7 M 3.3%	\$135 M 3.2%
Miscellaneous Expenses		\$5.53 M 1.4%	\$24.1 M 1.4%	\$58.6 M 1.4%
Personal Care		\$5.01 M 1.3%	\$22.1 M 1.3%	\$53.4 M 1.3%
Personal Insurance		\$3.33 M 0.8%	\$15.2 M 0.9%	\$36.0 M 0.9%
Reading		\$883 K 0.2%	\$3.91 M 0.2%	\$9.43 M 0.2%
Shelter		\$81.4 M 20.8%	\$362 M 20.9%	\$869 M 20.8%
Tobacco		\$1.99 M 0.5%	\$8.29 M 0.5%	\$20.3 M 0.5%
Transportation		\$70.5 M 18.0%	\$308 M 17.7%	\$747 M 17.9%
Utilities		\$27.3 M 7.0%	\$118 M 6.8%	\$286 M 6.9%
<b>Educational Attainment (2018)</b>				
Adult Population Age 25 Years or Over		7,168	29,601	70,311
Elementary (Grade Level 0 to 8)		47 0.7%	287 1.0%	689 1.0%
Some High School (Grade Level 9 to 11)		58 0.8%	415 1.4%	1,141 1.6%
High School Graduate		843 11.8%	3,450 11.7%	7,926 11.3%
Some College		1,514 21.1%	5,210 17.6%	12,687 18.0%
Associate Degree Only		489 6.8%	1,892 6.4%	5,328 7.6%
Bachelor Degree Only		2,764 38.6%	11,114 37.5%	25,422 36.2%
Graduate Degree		1,454 20.3%	7,234 24.4%	17,116 24.3%

This report was produced using data from private and government sources deemed to be reliable. The information herein is provided without representation or warranty.

# EXPANDED PROFILE

2000-2010 Census, 2018 Estimates with 2023 Projections

Calculated using Weighted Block Centroid from Block Groups

Lat/Lon: 33.5825/-111.8307

RF5

E Shea Blvd & N 116th St		1 mi radius		3 mi radius		5 mi radius	
<b>Units In Structure (2015)</b>							
1 Detached Unit	2,962	70.5%	12,317	77.9%	27,589	70.3%	
1 Attached Unit	188	4.5%	1,480	9.4%	4,174	10.6%	
2 to 4 Units	147	3.5%	652	4.1%	2,464	6.3%	
5 to 9 Units	366	8.7%	885	5.6%	2,561	6.5%	
10 to 19 Units	439	10.5%	759	4.8%	2,476	6.3%	
20 to 49 Units	140	3.3%	300	1.9%	1,051	2.7%	
50 or More Units	463	11.0%	988	6.2%	2,625	6.7%	
Mobile Home or Trailer	45	1.1%	177	1.1%	463	1.2%	
Other Structure	2	-	3	-	8	-	
<b>Homes Built By Year (2015)</b>							
Homes Built 2010 or later	55	1.3%	207	1.3%	510	1.3%	
Homes Built 2000 to 2009	649	15.4%	2,267	14.3%	6,083	15.5%	
Homes Built 1990 to 1999	1,956	46.6%	6,179	39.1%	15,711	40.0%	
Homes Built 1980 to 1989	1,549	36.9%	6,986	44.2%	13,653	34.8%	
Homes Built 1970 to 1979	279	6.6%	1,129	7.1%	5,091	13.0%	
Homes Built 1960 to 1969	96	2.3%	314	2.0%	1,071	2.7%	
Homes Built 1950 to 1959	51	1.2%	200	1.3%	438	1.1%	
Homes Built Before 1949	17	0.4%	70	0.4%	300	0.8%	
<b>Home Values (2015)</b>							
Home Values \$1,000,000 or More	108	4.2%	709	5.9%	1,150	4.2%	
Home Values \$500,000 to \$999,999	767	29.8%	4,165	34.9%	8,340	30.4%	
Home Values \$400,000 to \$499,999	349	13.6%	1,699	14.2%	4,608	16.8%	
Home Values \$300,000 to \$399,999	548	21.3%	2,060	17.2%	5,681	20.7%	
Home Values \$200,000 to \$299,999	604	23.5%	2,275	19.0%	5,386	19.6%	
Home Values \$150,000 to \$199,999	206	8.0%	994	8.3%	2,198	8.0%	
Home Values \$100,000 to \$149,999	90	3.5%	463	3.9%	1,126	4.1%	
Home Values \$70,000 to \$99,999	23	0.9%	98	0.8%	219	0.8%	
Home Values \$50,000 to \$69,999	7	0.3%	37	0.3%	115	0.4%	
Home Values \$25,000 to \$49,999	9	0.3%	39	0.3%	104	0.4%	
Home Values Under \$25,000	50	1.9%	192	1.6%	446	1.6%	
Owner-Occupied Median Home Value	\$407,937		\$452,710		\$425,388		
Renter-Occupied Median Rent	\$1,087		\$1,164		\$1,161		
<b>Transportation To Work (2015)</b>							
Drive to Work Alone	3,655	74.0%	14,415	74.1%	33,916	73.6%	
Drive to Work in Carpool	407	8.2%	1,616	8.3%	4,035	8.8%	
Travel to Work by Public Transportation	59	1.2%	253	1.3%	655	1.4%	
Drive to Work on Motorcycle	13	0.3%	51	0.3%	128	0.3%	
Walk or Bicycle to Work	126	2.6%	359	1.8%	891	1.9%	
Other Means	49	1.0%	227	1.2%	558	1.2%	
Work at Home	628	12.7%	2,528	13.0%	5,893	12.8%	
<b>Travel Time (2015)</b>							
Travel to Work in 14 Minutes or Less	1,119	26.0%	4,406	26.0%	11,743	29.2%	
Travel to Work in 15 to 29 Minutes	1,939	45.0%	7,019	41.5%	16,924	42.1%	
Travel to Work in 30 to 59 Minutes	1,518	35.2%	5,198	30.7%	12,669	31.5%	
Travel to Work in 60 Minutes or More	167	3.9%	779	4.6%	1,529	3.8%	
Average Minutes Travel to Work	22.0		21.4		21.1		

This report was produced using data from private and government sources deemed to be reliable. The information herein is provided without representation or warranty.