

Wal-Mart Retail Pad

Meridian & 167th St Ct E
Puyallup, WA

Price Reduced:
~~\$1,090,000~~ \$795,000

31,185 SF pad available in front of Wal-Mart

Prime Meridian frontage with 38,000 cars per day

Estimated population of over 134,000 residents & 47,000 households within a 5 mile radius

Frontage: 189 feet
Depth: 140 feet



DEMOGRAPHICS

	1 mile	3 miles	5 miles
Population	8,224	64,569	130,707
Average Household Income	\$91,385	\$80,391	\$79,948

Location

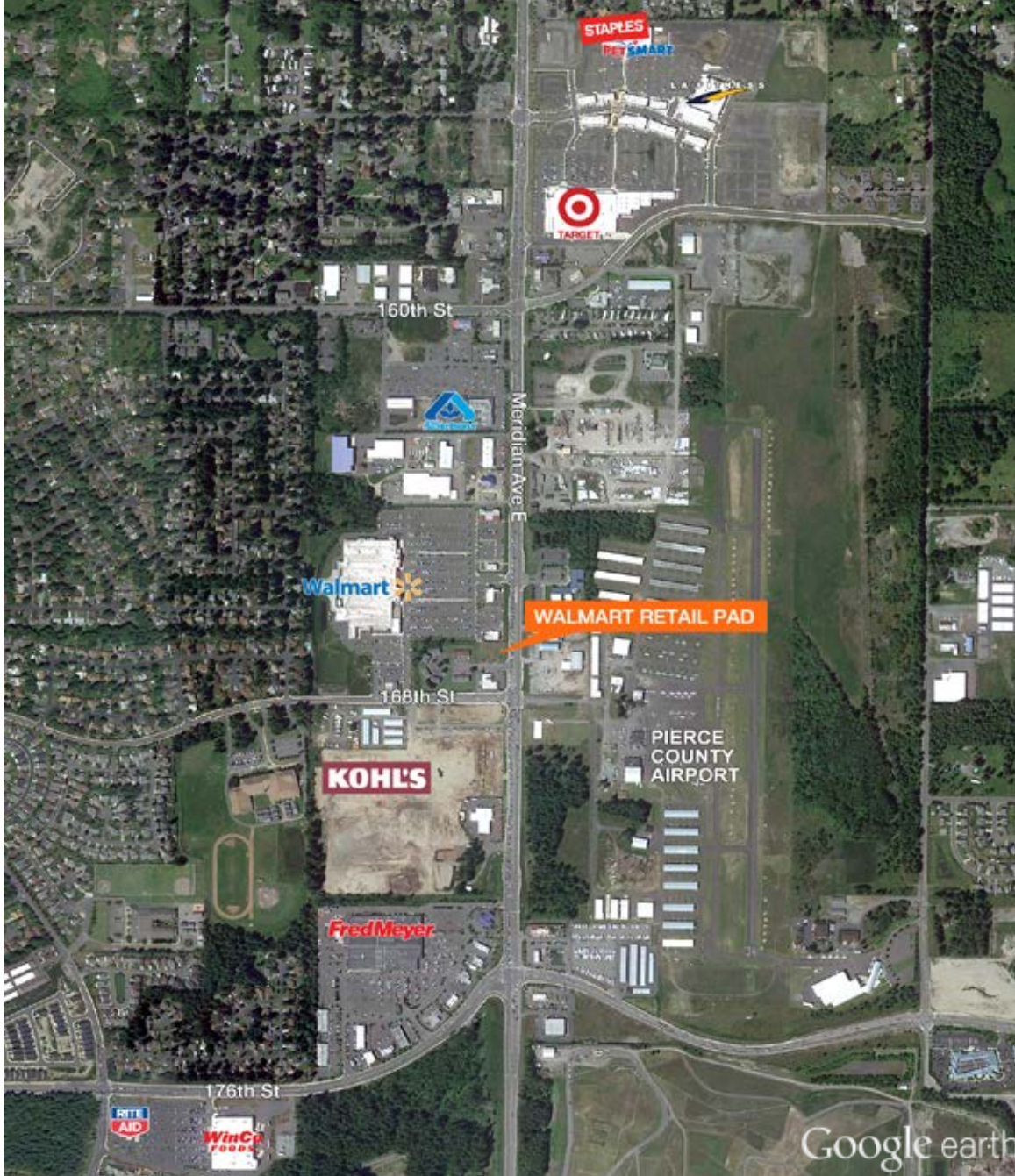


Contact

Benjamin A. Norbe
253.722.1410
bnorbe@kiddermathews.com

Bill Frame
253.722.1403
bframe@kiddermathews.com

Wal-Mart Retail Pad



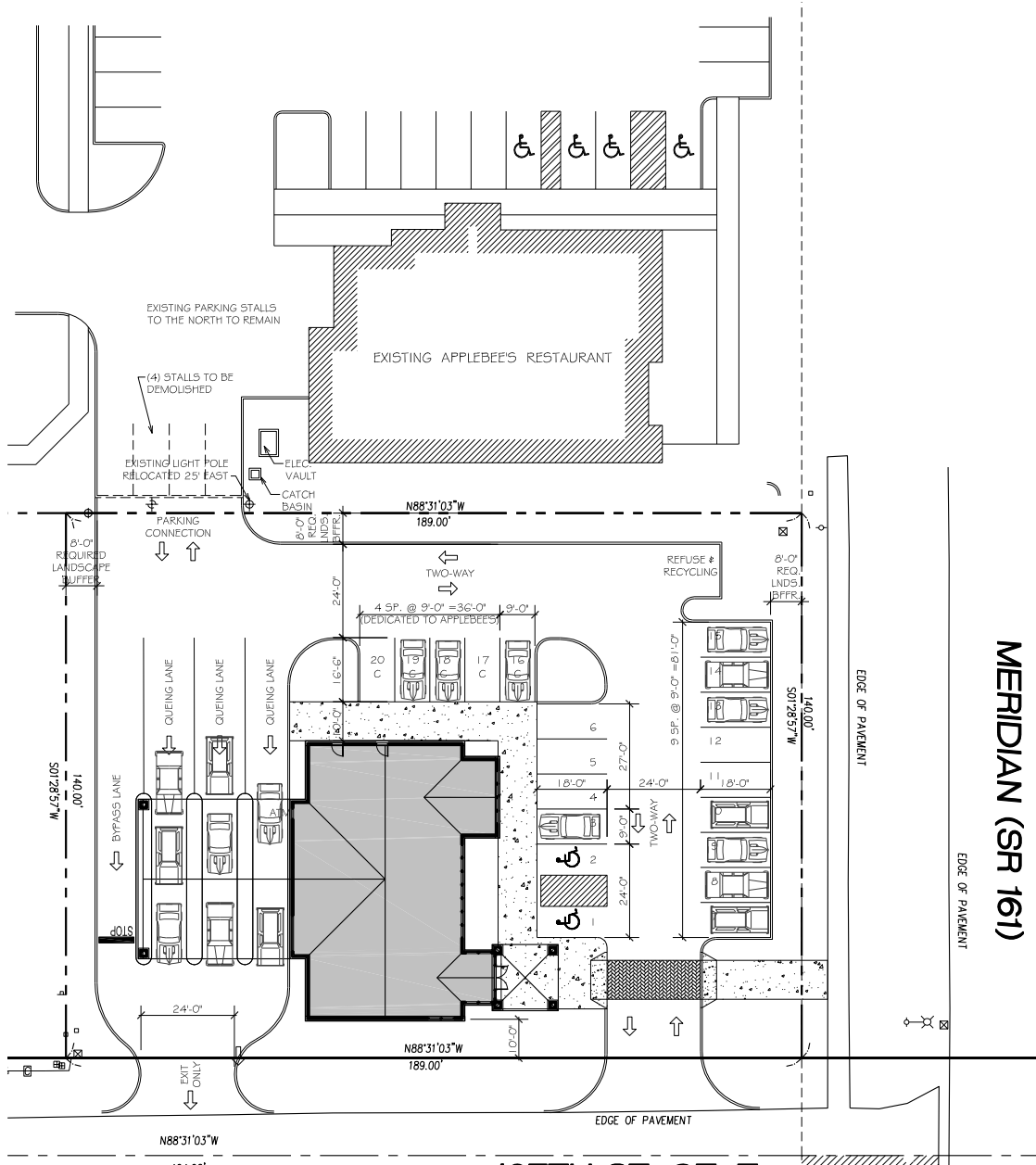
Contact

Benjamin A. Norbe
253.722.1410
bnorbe@kiddermathews.com

Bill Frame
253.722.1403
bframe@kiddermathews.com

Wal-Mart Retail Pad

CONCEPTUAL PLANS



Contact

Benjamin A. Norbe
 253.722.1410
 bnorbe@kiddermathews.com

Bill Frame
 253.722.1403
 bframe@kiddermathews.com