



OFFICE SPACE FOR LEASE

HANDCRAFT BUILDING- SECOND FLOOR OFFICE SPACE FOR LEASE

1501 ROSENEATH ROAD , RICHMOND, VA 23230



HANDCRAFT BUILDING- SECOND FLOOR OFFICE SPACE FOR LEASE

1501 ROSENEATH ROAD , RICHMOND, VA 23230

PROPERTY OVERVIEW



OFFERING SUMMARY

Available SF:	6,460 SF
Lease Rate:	\$24.00 SF/yr (NNN)
Lot Size:	2.07 Acres
Building Size:	90,292 SF
Zoning:	B-7

PROPERTY OVERVIEW

Located in the heart of Scott's Addition, this 90,000 SF iconic structure has been completely renovated to provide its tenants with a modern, creative space in a high-density, easily accessible and well known location.

This second floor suite is the premiere location within the building. Continuous windows facing South, East & West provide exceptional light throughout the day and wonderful street scene views.

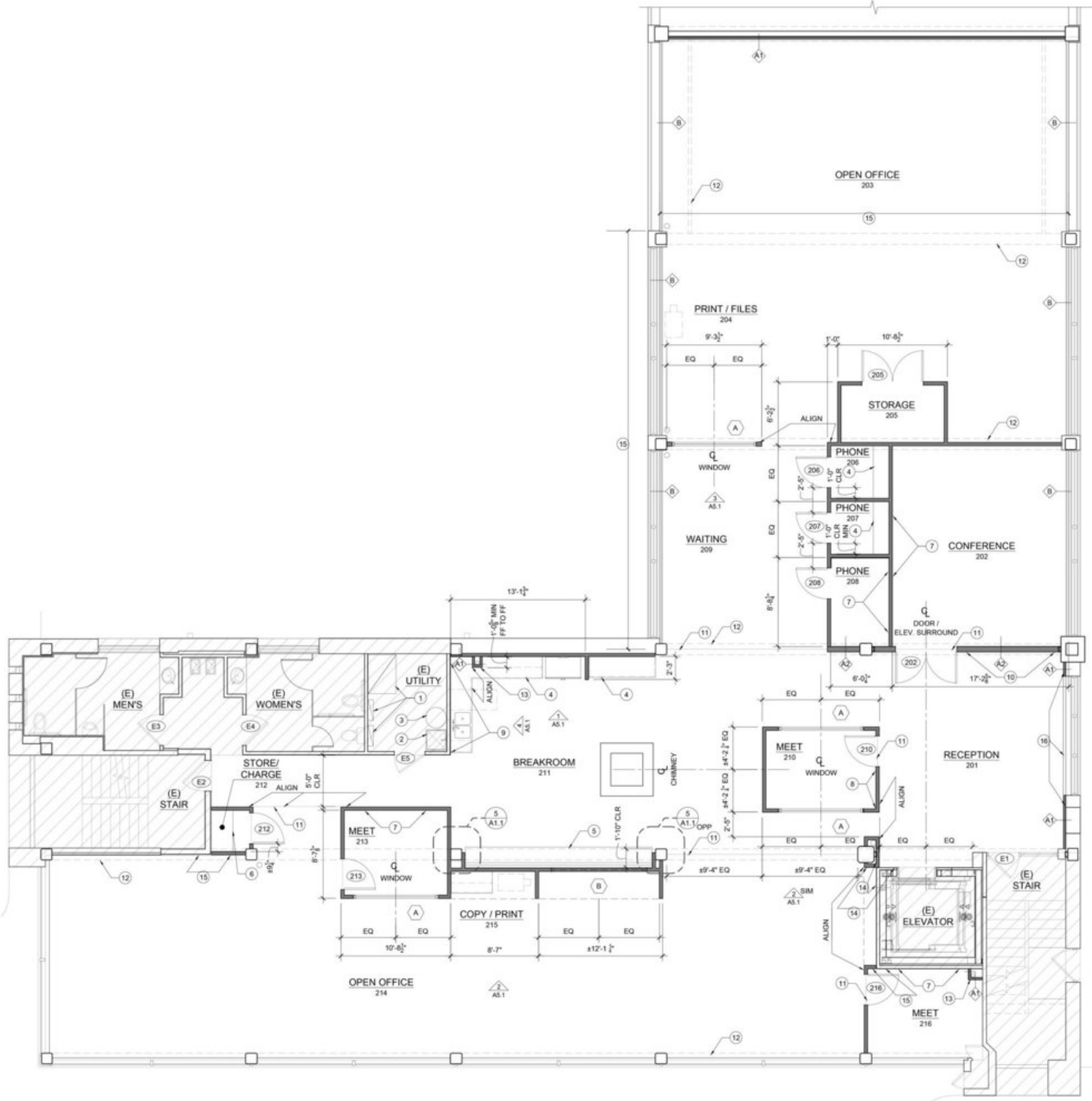
PROPERTY HIGHLIGHTS

- Prominent Roseneath Rd visibility
- Built out as creative office space
- Large break room
- Private restrooms
- Lots of glass
- 2 reserved parking spaces on lot adjacent to building and abundant parking in lot across the street

HANDCRAFT BUILDING- SECOND FLOOR OFFICE SPACE FOR LEASE

1501 ROSENEATH ROAD , RICHMOND, VA 23230

FLOOR PLAN



HANDCRAFT BUILDING- SECOND FLOOR OFFICE SPACE FOR LEASE

1501 ROSENEATH ROAD , RICHMOND, VA 23230

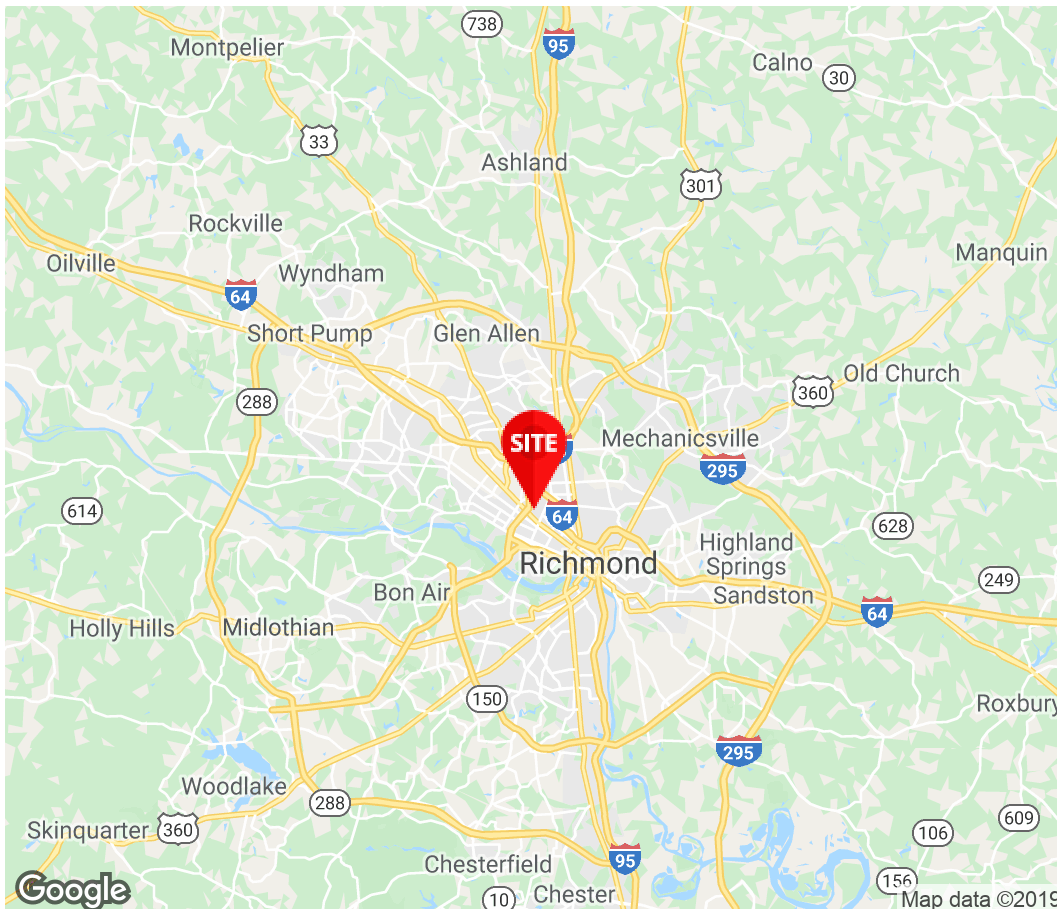
INTERIOR PHOTOS





Cheryle Toy
 Vice President
 804.977.2092
 Ctoy@divaris.com

Read Goode
 Senior Vice President
 804.335.0554
 Rgoode@divaris.com



The information contained herein should be considered confidential and remains the sole property of Divaris Real Estate, Inc. at all times. Although every effort has been made to ensure accuracy, no liability will be accepted for any errors or omissions. Disclosure of any information contained herein is prohibited except with the express written permission of Divaris Real Estate, Inc.