

215 E. WARM SPRINGS RD. SUITE 104 LAS VEGAS, NEVADA 89119



1,758 Sq. Ft. Office
\$0.90 NNN (\$1582.20)
\$0.36 CAMS (\$632.88)
Total (\$2215.08)

- ◆ 3 Offices
- ◆ 2 Open Areas
- ◆ 1 Break Area
- ◆ Data Room
- ◆ 1 Conference Room
- ◆ Community Restrooms just out the back door in the courtyard

Easy access to I-15 & I-215
Excellent Landscaping
Close to Las Vegas Blvd &
McCarran International Airport



PRIORITY ONE COMMERCIAL
REAL ESTATE BROKERAGE

7259 W. SAHARA AVE. STE. 110
LAS VEGAS, NV. 89117

WWW.PRIORITYONECOMMERCIAL.COM

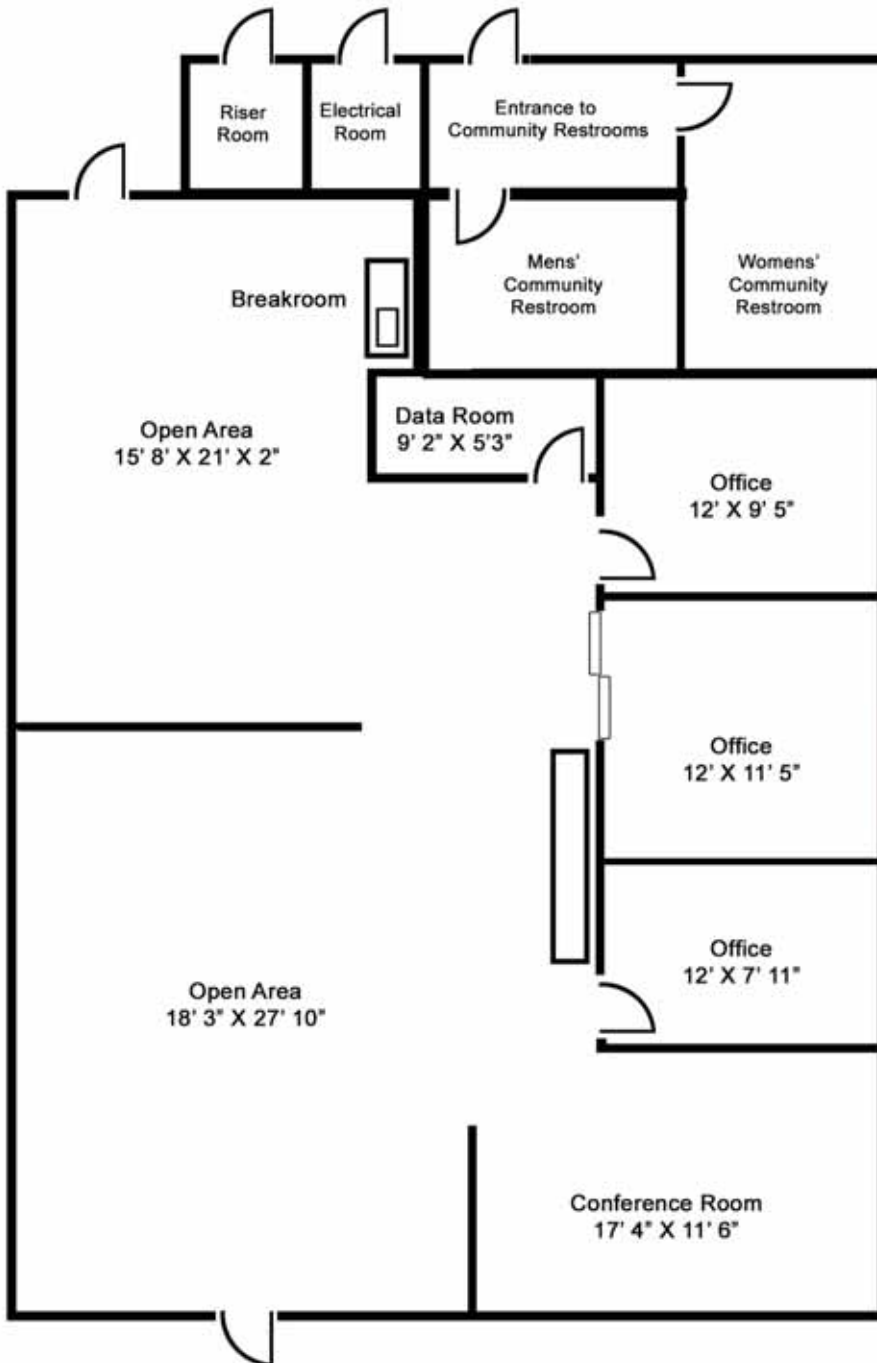
**LANDLORD
WILL DO
TENANT IMPROVEMENTS**

CYNTHIA A. INMAN
Owner/Corporate Broker
Certified Property Manager
702.228.7464
cinman@poclv.com

THE INFORMATION CONTAINED HEREIN WAS OBTAINED BY SOURCES WE BELIEVE TO BE RELIABLE, HOWEVER, NO WARRANTY OR GUARANTEE EITHER EXPRESSED OR IMPLIED IS MADE TO ACCURACY HEREOF. ALL SUCH INFORMATION IS SUBMITTED, SUBJECT TO ERRORS, OMISSIONS OR CHANGES IN CONDITION PRIOR TO SALE, LEASE OR WITHDRAWAL WITHOUT NOTICE. ALL INFORMATION CONTAINED HEREIN SHOULD BE VERIFIED.

215 E. WARM SPRINGS RD. SUITE 104 LAS VEGAS, NEVADA 89119

OFFICE SPACE FOR LEASE



1,758 Sq. Ft. Office
\$0.90 NNN (\$1582.20)
\$0.36 CAMS (\$632.88)
Total (\$2215.08)

- ◆ 3 Offices
- ◆ 2 Open Areas
- ◆ 1 Break Area
- ◆ Data Room
- ◆ 1 Conference Room
- ◆ Community Restrooms just out the back door in the courtyard

Easy access to I-15 & I-215
Excellent Landscaping
Close to Las Vegas Blvd & McCarran International Airport



PRIORITY ONE COMMERCIAL
REAL ESTATE BROKERAGE

7259 W. SAHARA AVE. STE. 110
LAS VEGAS, NV. 89117

WWW.PRIORITYONECOMMERCIAL.COM

CYNTHIA A. INMAN
Owner/Corporate Broker
Certified Property Manager
702.228.7464
cinman@poclv.com

THE INFORMATION CONTAINED HEREIN WAS OBTAINED BY SOURCES WE BELIEVE TO BE RELIABLE, HOWEVER, NO WARRANTY OR GUARANTEE EITHER EXPRESSED OR IMPLIED IS MADE TO ACCURACY HEREOF. ALL SUCH INFORMATION IS SUBMITTED, SUBJECT TO ERRORS, OMISSIONS OR CHANGES IN CONDITION PRIOR TO SALE, LEASE OR WITHDRAWAL WITHOUT NOTICE. ALL INFORMATION CONTAINED HEREIN SHOULD BE VERIFIED.