



**696 W. EL CAMINO REAL
SUNNYVALE,
CALIFORNIA**
CAMINO PLAZA

NEW CORNER RETAIL ON EL CAMINO REAL UNDER CONSTRUCTION



PROPERTY HIGHLIGHTS:

- Prominent Corner Location, Hollenbeck Ave. and El Camino Real
- 9,836± SF Retail Building
- Divisible to 1,000± SF and Up
- High Identity Design and Location
- Across From Sunnyvale Civic Center Complex
- Traffic on El Camino Real: 41,000 ADT
- 40 Parking Stalls, Access From Hollenbeck and El Camino

ESTIMATED DEMOGRAPHICS:

	<u>1 MILE</u>	<u>3 MILE</u>	<u>5 MILES</u>
POPULATION:	36,620	228,533	497,391
AVG. HH INCOME	\$132,234	\$134,600	\$137,206

FOR MORE INFORMATION CONTACT:

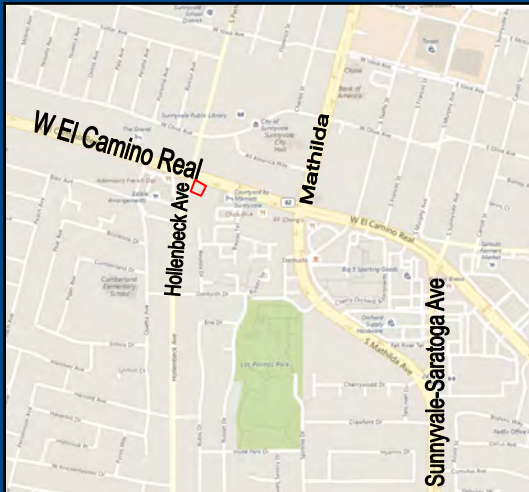
David Taxin

Lic. #00983163

dtaxin@moinc.net

(408) 477-2508

(408) 378-5900

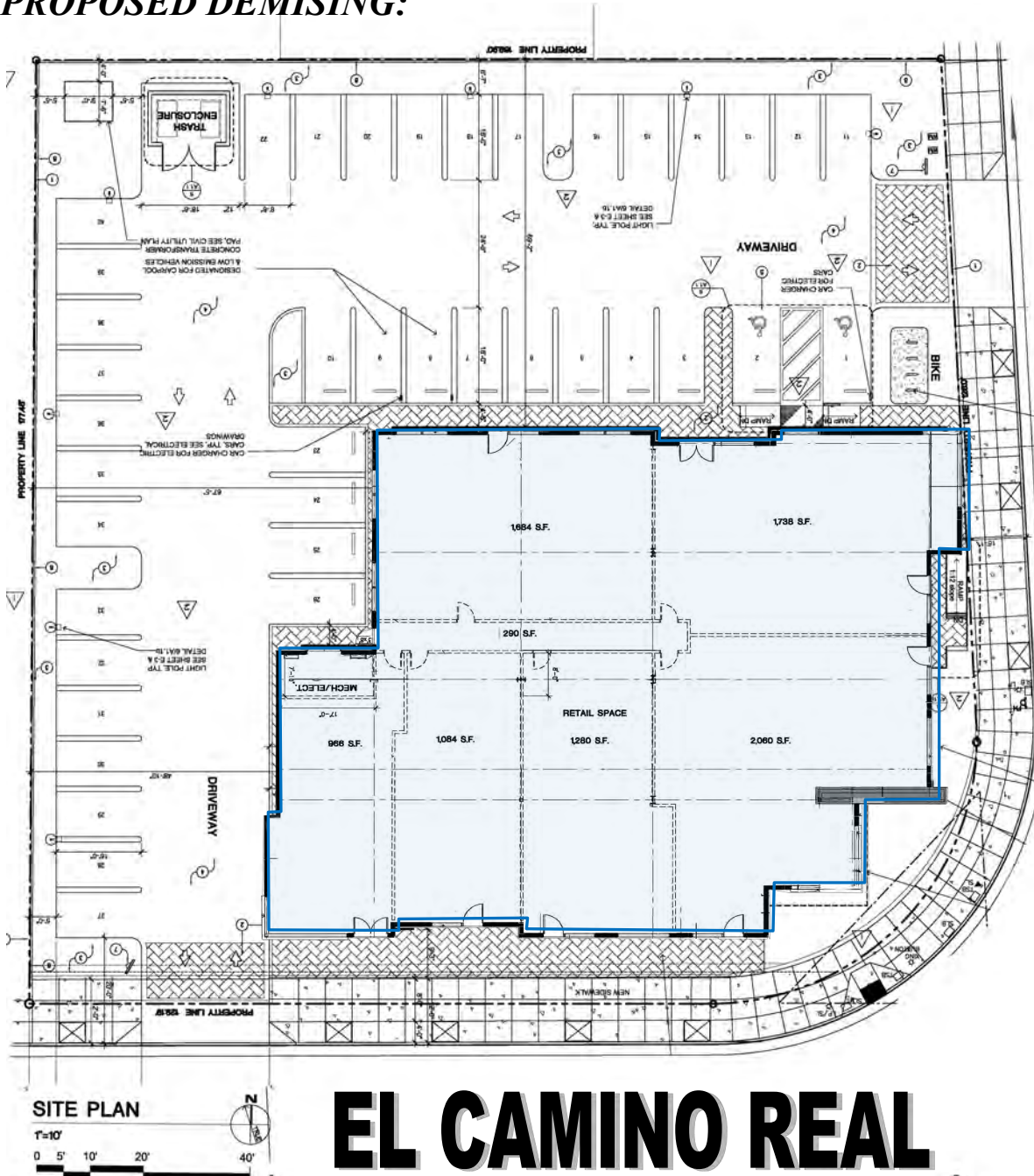


MEACHAM/OPPENHEIMER, INC.
CORFAC INTERNATIONAL
8 No. San Pedro St., Suite 300
San Jose, California 95110
Tel: 408.378.5900
Fax: 408.378.5903
www.moinc.net

696 E. El Camino Real • Sunnyvale, California

RETAIL BUILDING—9,836 SF

PROPOSED DEMISING:



HOLLENBECK

EL CAMINO REAL

MEACHAM/OPPENHEIMER, INC.
CORFAC INTERNATIONAL
8 No. San Pedro St., Suite 300
San Jose, California 95110
Tel: 408.378.5900
www.moinc.net

David Taxin
Lic. #00983163
dtaxin@moinc.net
(408) 477-2508

The information contained herein has been obtained from sources we deem reliable. We cannot, however, assume responsibility for its accuracy.

696 E. El Camino Real • Sunnyvale, California



MEACHAM/OPPENHEIMER, INC.
CORFAC INTERNATIONAL
8 No. San Pedro St., Suite 300
San Jose, California 95110
Tel: 408.378.5900
www.moinc.net

David Taxin
Lic. #00983163
dtaxin@moinc.net
(408) 477-2508

696 E. El Camino Real • Sunnyvale, California



Sunnyvale Civic Center



MEACHAM/OPPENHEIMER, INC.
CORFAC INTERNATIONAL
 8 No. San Pedro St., Suite 300
 San Jose, California 95110
 Tel: 408.378.5900
 www.moinc.net

David Taxin
 Lic. #00983163
dtaxin@moinc.net
(408) 477-2508