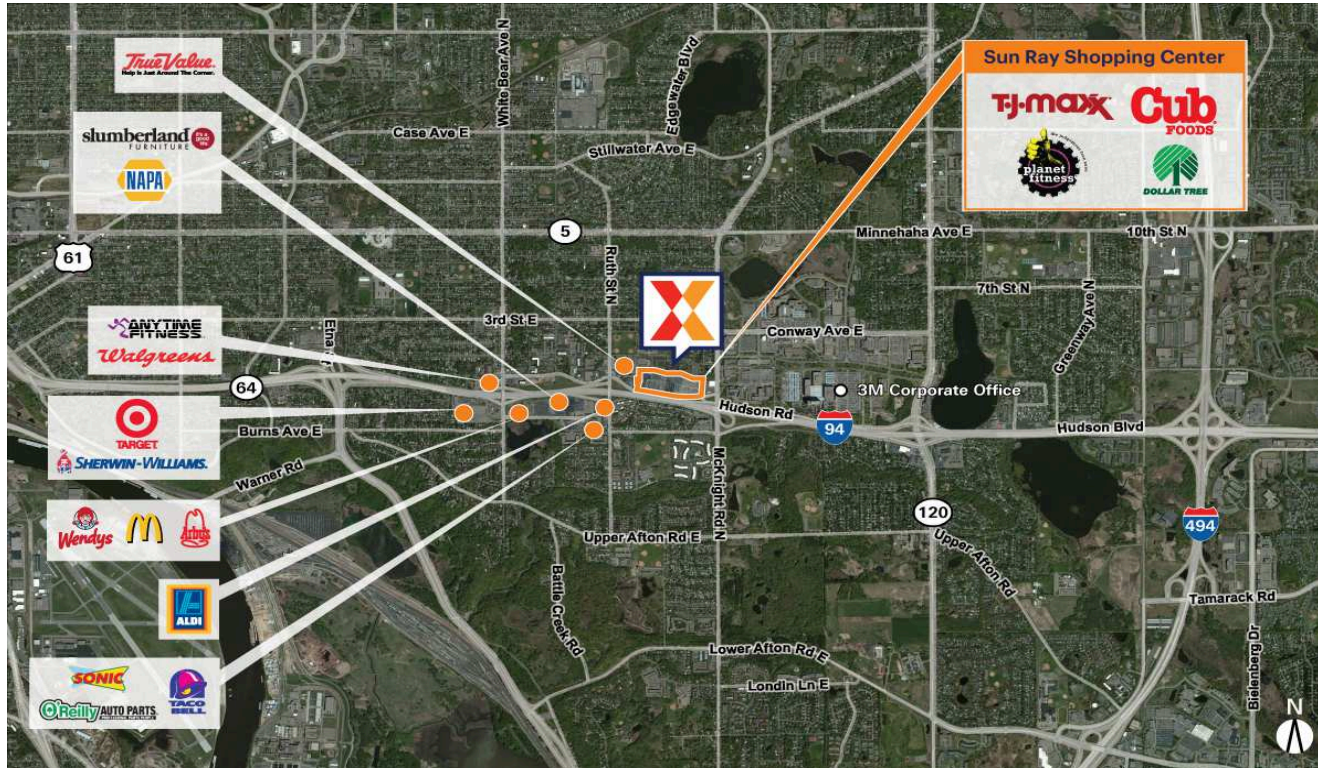


# Sun Ray Shopping Center

Minneapolis-St. Paul-Bloomington, MN-WI

44.9517, -93.0092

2089-2215 Old Hudson Road | St. Paul, MN 55119-4406



Center Size: 291,048 SF



## Demographics

	1 Mile	3 Mile	5 Mile
	15,511	105,748	264,544
	6,034	39,201	100,403
	\$62,274	\$66,793	\$72,999

Well located on I-94 with 89,000+ vehicles daily and convenient accessibility to the east side of St. Paul

Close proximity to 3M global headquarters and Maplewood Mall anchored by JCPenney, Kohl's & Macy's

Surrounded by a dense population of 105,000+ residents within 3 miles

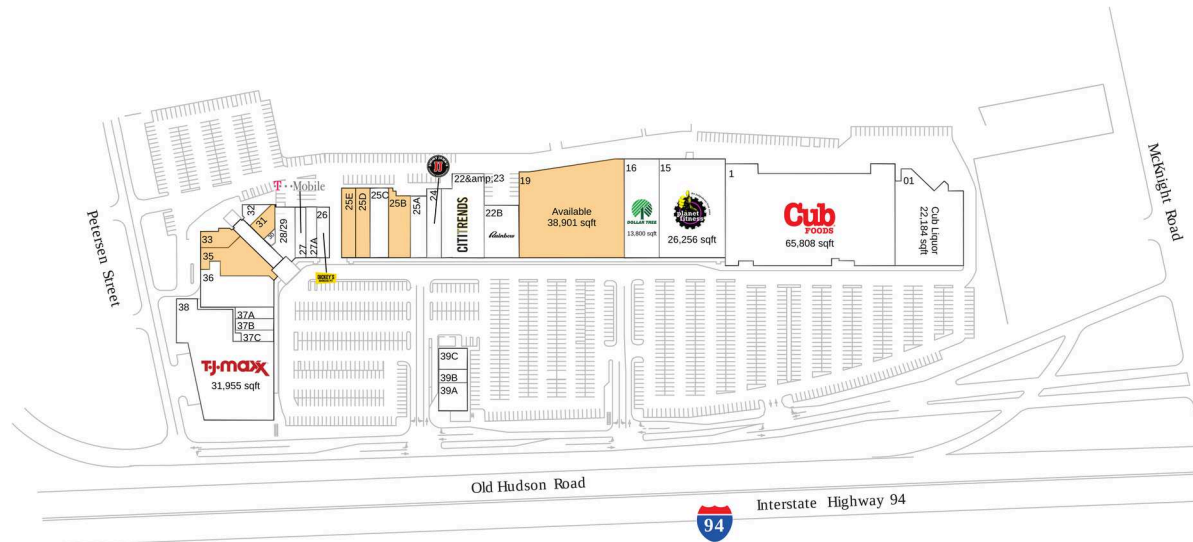
Cub Foods-anchored center with national retailers including T.J. Maxx, Planet Fitness, Rainbow, T-Mobile & Sally Beauty Supply

# Sun Ray Shopping Center

Minneapolis-St. Paul-Bloomington, MN-WI

44.9517, -93.0092

2089-2215 Old Hudson Road | St. Paul, MN 55119-4406



## Available Space

19	38,901 SF
25B	5,141 SF
25D	3,702 SF
25E	3,448 SF
31	2,343 SF
33	2,337 SF
35	5,714 SF

## Current Retailers

01	Cub Liquor	22,184 SF
1	Cub Foods	65,808 SF
15	Planet Fitness	26,256 SF
16	Dollar Tree	13,800 SF
22&23	Citi Trends	13,730 SF
22B	Rainbow	7,040 SF
24	Jimmy John's	3,430 SF
25A	Chicago Nails	4,220 SF
25C	Villa Join The Movement	5,658 SF
26	Dickey's Barbecue Pit	2,550 SF
27	T-Mobile	1,903 SF
27A	Smoke 4 Less	2,050 SF
28/29	New Life Women's Center	3,864 SF
30	Blendz Barber Shop	425 SF
32	District One	1,176 SF
36	Keys 4/4 Kids	11,278 SF
37A	Great Clips	1,762 SF
37B	Sally Beauty Supply	1,521 SF
37C	GNC	1,549 SF
38	T.J. Maxx	31,955 SF
39A	LeAnne Chin	3,200 SF
39B	Domino's Pizza	1,500 SF
39C	Bruegger's Bagel/Caribou Coffee	2,400 SF

4185