

595 ELEVENTH AVENUE



SINGLE USER BUILDING | SIGNAGE & BRANDING OPPORTUNITIES



▶ TAKE A VIRTUAL TOUR



595 ELEVENTH AVENUE



FLOOR / AREA	ENTIRE 3RD / 9,764 RSF
	ENTIRE 2ND / 9,764 RSF
	ENTIRE GROUND FLOOR / 10,273 RSF
	ENTIRE LOWER LEVEL / 7,350 RSF
	TOTAL / 37,151 RSF
<hr/>	
POSSESSION	JANUARY 1, 2020
<hr/>	
TERM	5-15 YEARS

COMMENTS:

Headquarters building for lease

- Unique signage/branding opportunities
- Above standard ceiling height with oversized windows
- Flooded with natural light
- Internal staircase leads to a gorgeous useable roof deck
- Top floor features skylights
- Lower level serves as functional office or an amenity floor

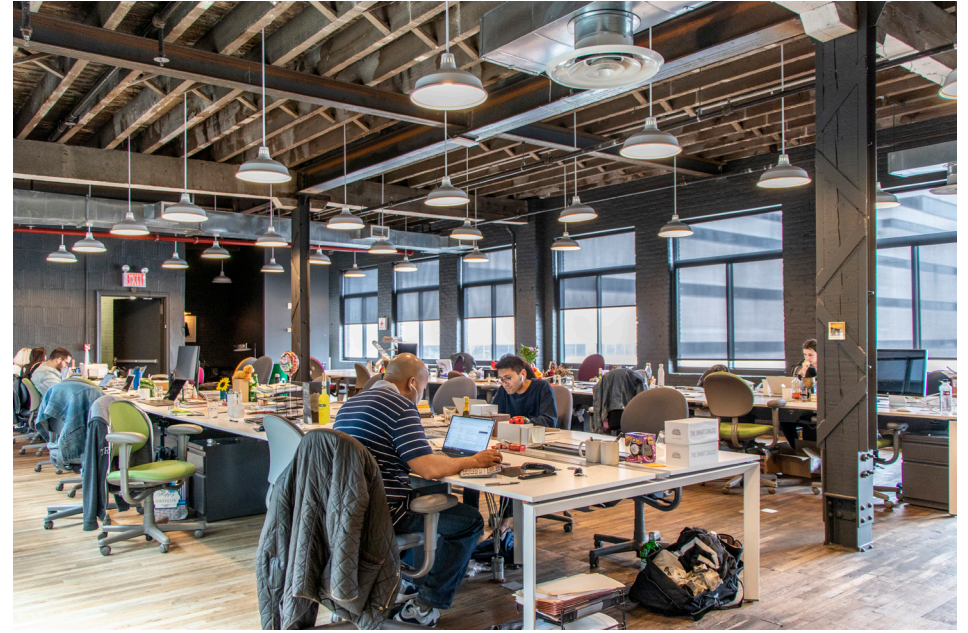
EXISTING SPACE

595 ELEVENTH AVENUE



EXISTING SPACE

595 ELEVENTH AVENUE



EXISTING SPACE & PRIVATE ROOFTOP

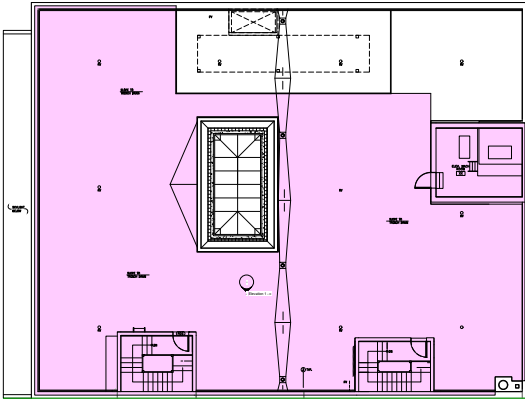
595 ELEVENTH AVENUE



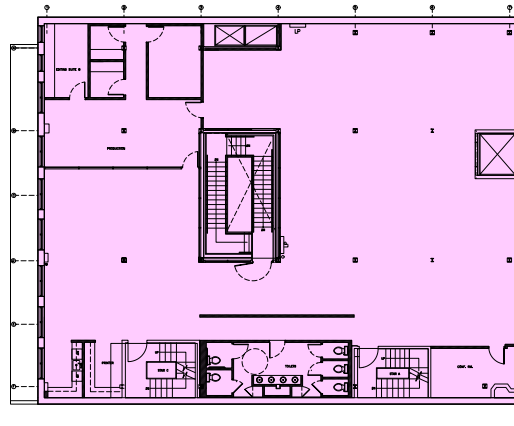
FLOOR PLANS

595 ELEVENTH AVENUE

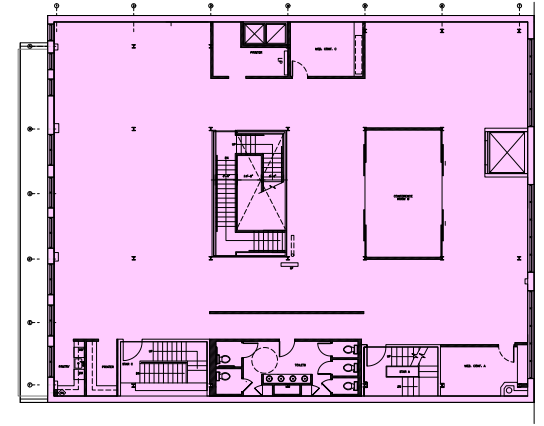
ROOFTOP



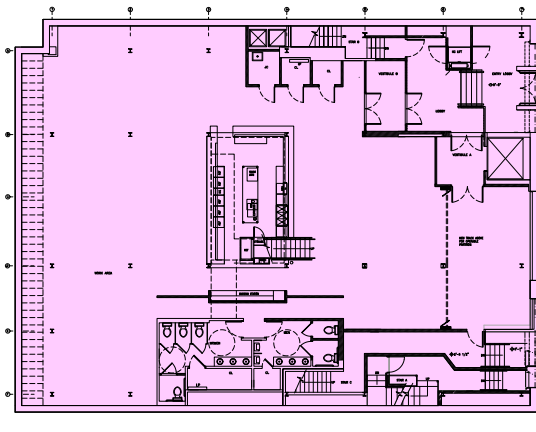
ENTIRE 3RD / 9,764 RSF



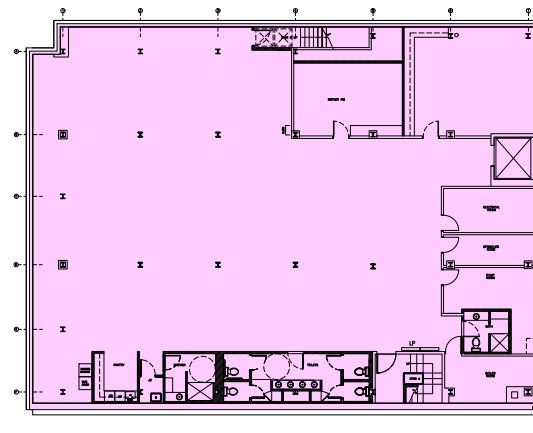
ENTIRE 2ND / 9,764 RSF



ENTIRE GROUND FLOOR / 10,273 RSF



ENTIRE LOWER LEVEL / 7,350 RSF



595 ELEVENTH AVENUE

NICK BERGER

nberger@ngkf.com

212.372.2411

GREG DIGIOIA

gregory.digioia@ngkf.com

212.372.2330



The information contained herein has been obtained from sources deemed reliable but has not been verified and no guarantee, warranty or representation, either express or implied, is made with respect to such information. Terms of sale or lease and availability are subject to change or withdrawal without notice.