



**CUSHMAN &
WAKEFIELD**
Commerce

FOR LEASE

3570-3588 South 500 West
South Salt Lake, Utah

MID-VALLEY OFFICE - WAREHOUSE/SHOP SPACE



3584 South

Property Highlights

- Each suite has good visibility and signage to 500 West with an over head door in the rear
- Works great as a shop space
- Centrally located with easy access to 3300 South / I-15 freeway ramps
- Electric door openers on overhead doors
- **Landlord will provide internet for first year**
- Total square footage: 1,600 SF
- Office square footage: 300 SF
- Warehouse square footage: 1,300 SF
- Door: 10' x 10' GL
- Ceiling: 12'
- Zoning: Light Industrial & Commercial
- Lease rate: \$1,120 per month, MG



Bob Mills

Executive Director
+1 801 303 5551
bmills@comre.com

170 South Main Street, Suite 1600
Salt Lake City, UT 84101
Main +1 801 322 2000
Fax +1 801 322 2040
comre.com

Independently Owned and Operated / A Member of the Cushman & Wakefield Alliance

Cushman & Wakefield Copyright 2017. No warranty or representation, express or implied, is made to the accuracy or completeness of the information contained herein, and same is submitted subject to errors, omissions, change of price, rental or other conditions, withdrawal without notice, and to any special listing conditions imposed by the property owner(s). As applicable, we make no representation as to the condition of the property (or properties) in question. (path: G:\1 - Projects\Mills, B\1 - Flyers\3570-3588s500w\ 3570-3588s500w_3584.indd)

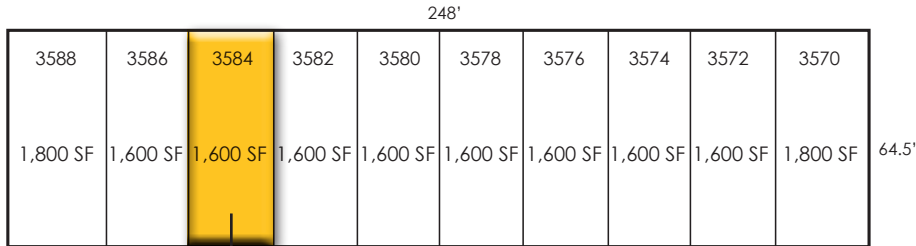
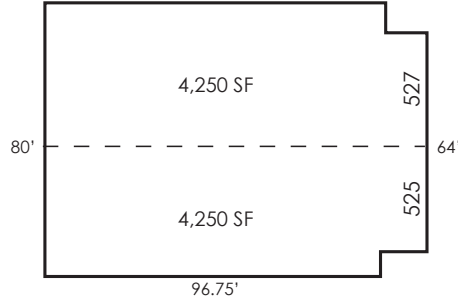
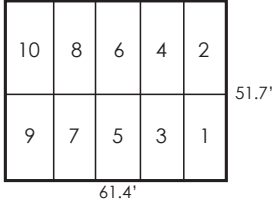


**CUSHMAN &
WAKEFIELD**
Commerce

FOR LEASE

3570-3588 South 500 West
South Salt Lake, Utah

521 West 3560 South (rear)
-storage units-

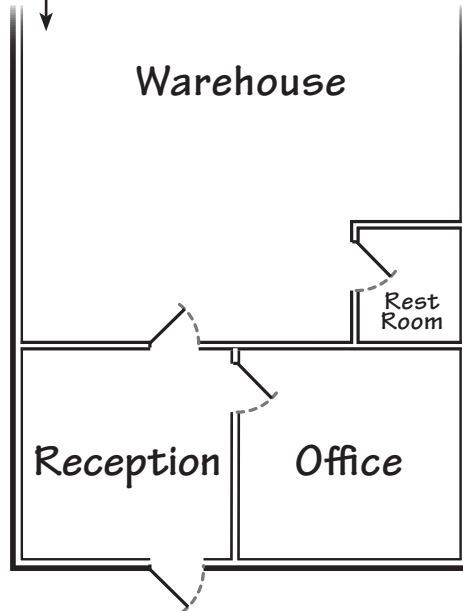


Billinis Road (3560 South)



AVAILABLE

500 WEST



Bob Mills
Executive Director
+1 801 303 5551
bmills@comre.com

170 South Main Street, Suite 1600
Salt Lake City, UT 84101
Main +1 801 322 2000
Fax +1 801 322 2040
comre.com

Independently Owned and Operated / A Member of the Cushman & Wakefield Alliance

Cushman & Wakefield Copyright 2017. No warranty or representation, express or implied, is made to the accuracy or completeness of the information contained herein, and same is submitted subject to errors, omissions, change of price, rental or other conditions, withdrawal without notice, and to any special listing conditions imposed by the property owner(s). As applicable, we make no representation as to the condition of the property (or properties) in question. (path: G:\1 - Projects\Mills, B\1 - Flyers\3570-3588s500w\3570-3588s500w_3584.indd)