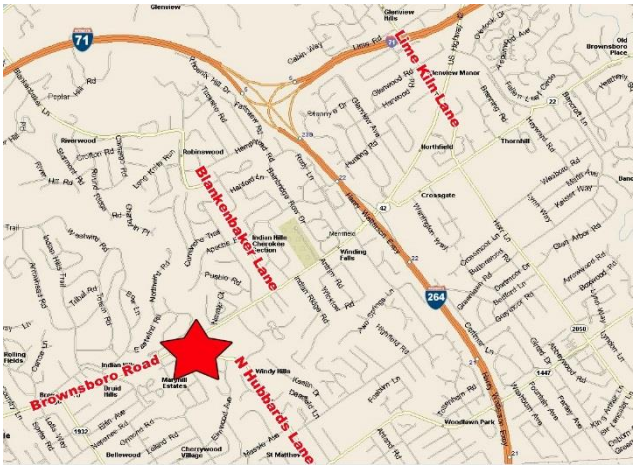


OFFICE FOR LEASE
1,876 SF

PROPERTY FEATURES

- Located in highly desirable Brownsboro Road corridor
- Convenient mid-town location
- Tranquil setting with flowing stream
- Class A finishes
- Competitive rental rates
- Ample parking



SUMMIT II



For more information, please contact:

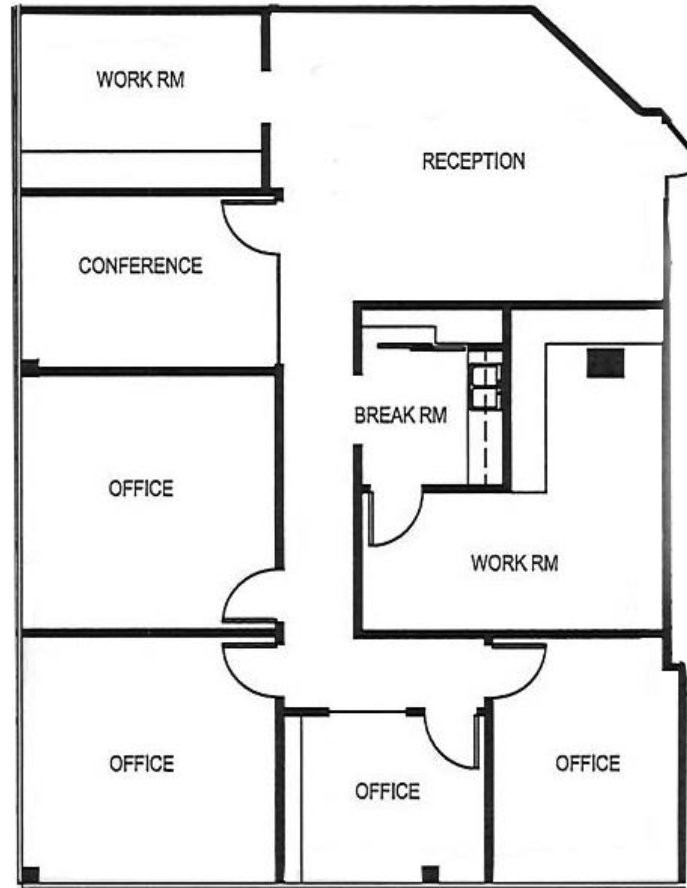
E.P. SCHERER
Senior Director
502 589 5150 ext. 234
epscherer@commercialkentucky.com

SAM ENGLISH, CFA
Senior Director
502 589 5150 ext. 244
senglish@commercialkentucky.com

333 E. Main Street, Suite 510
Louisville, KY 40202
phone: +1 502 589 5150
www.CommercialKentucky.com

Independently Owned and Operated / A Member of the Cushman & Wakefield Alliance

©2018 Cushman & Wakefield. All rights reserved. The information contained in this communication is strictly confidential. This information has been obtained from sources believed to be reliable but has not been verified. NO WARRANTY OR REPRESENTATION, EXPRESS OR IMPLIED, IS MADE AS TO THE CONDITION OF THE PROPERTY (OR PROPERTIES) REFERENCED HEREIN OR AS TO THE ACCURACY OR COMPLETENESS OF THE INFORMATION CONTAINED HEREIN, AND SAME IS SUBMITTED SUBJECT TO ERRORS, OMISSIONS, CHANGE OF PRICE, RENTAL OR OTHER CONDITIONS, WITHDRAWAL WITHOUT NOTICE, AND TO ANY SPECIAL LISTING CONDITIONS IMPOSED BY THE PROPERTY OWNER(S). ANY PROJECTIONS, OPINIONS OR ESTIMATES ARE SUBJECT TO UNCERTAINTY AND DO NOT SIGNIFY CURRENT OR FUTURE PROPERTY PERFORMANCE.



SUITE 320 FLOOR PLAN

For more information, please contact:

E.P. SCHERER
Senior Director
502 589 5150 ext. 234
epscherer@commercialkentucky.com

SAM ENGLISH, CFA
Senior Director
502 589 5150 ext. 244
senglish@commercialkentucky.com

333 E. Main Street, Suite 510
Louisville, KY 40202
phone: +1 502 589 5150
www.CommercialKentucky.com