

FULL FLOOR

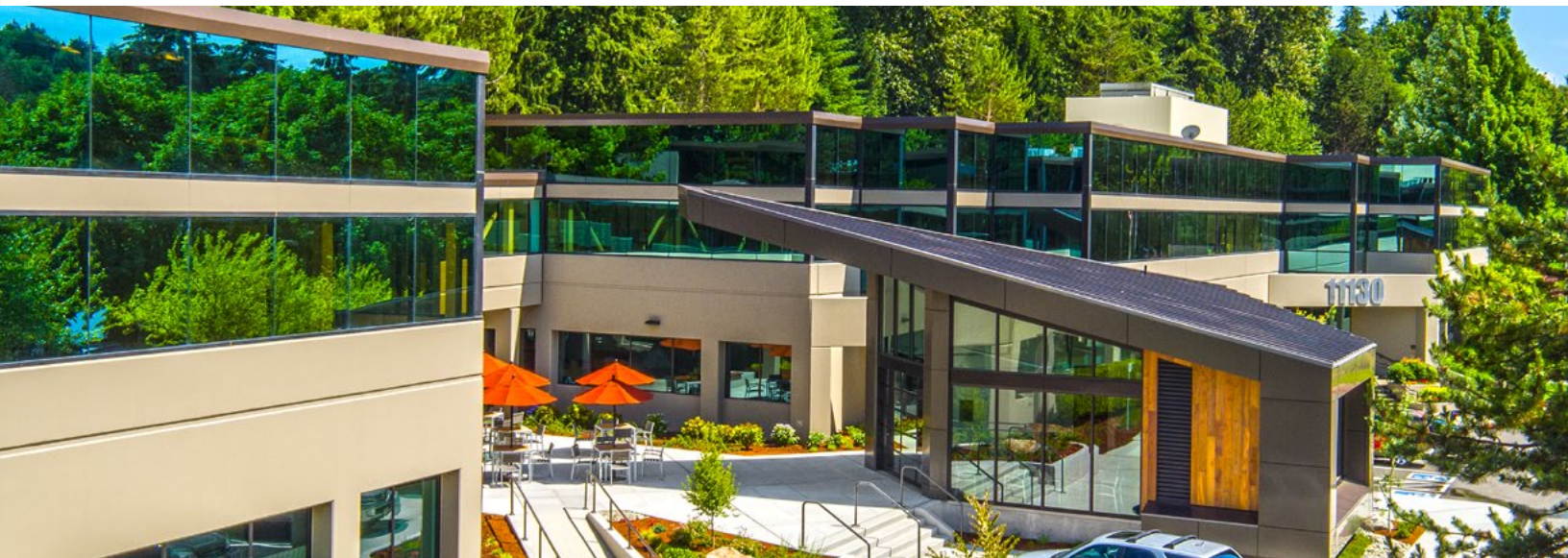
18,667 SF AVAILABLE 3/1/2020 IN BUILDING 2

17,509 SF AVAILABLE 10/1/2020 IN BUILDING 1

# BEL-KIRK — 520 —

11130 NE 33rd Place, Bellevue

Where access, efficiency and convenience intersect



[www.belkirk520.com](http://www.belkirk520.com)

For leasing information contact:

**Mark Flippo**

425.974.4007

[mark.flippo@am.jll.com](mailto:mark.flippo@am.jll.com)



**Riley Shephard**

425.462.6932

[riley.shephard@cbre.com](mailto:riley.shephard@cbre.com)



Jones Lang LaSalle Brokerage, Inc





**THE HUB** at Bel Kirk 520 is a standalone, great-room style structure built for exclusive use of Bel Kirk 520 tenants.

Offering both indoor and outdoor work spaces, the Hub features an Avanti Market, roll-up door that opens to the outdoor patio space, and areas for both casual and formal meetings. The HUB also features a TV lounge and Wi-Fi throughout.



Hub Site Plan



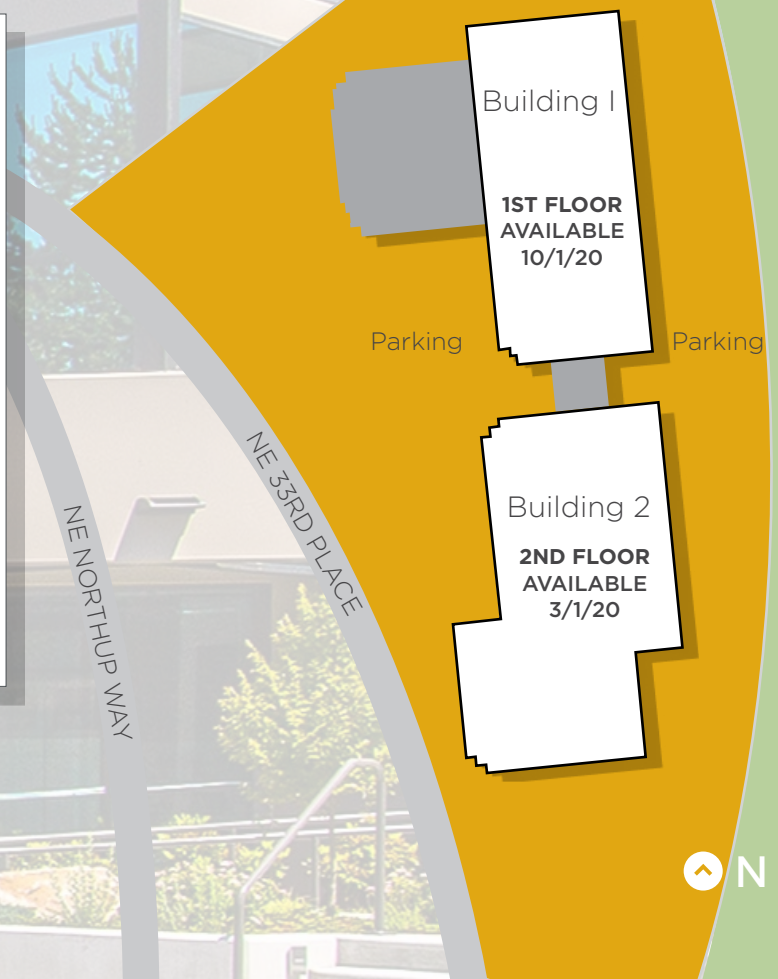
## Availabilities

| Building | Suite | RSF (+/-) |
|----------|-------|-----------|
| 2        | 200   | 18,667    |
| 1        | 101   | 17,509    |

## Property Features

- Large efficient floor plates
- Free parking at 3.7 per 1,000 rsf
- Onsite sport court, locker room/ shower facilities
- Security system with proximity card access
- Near restaurants, retail and hotels
- Strategic location provides immediate access to SR-520 and Interstate 405

## Site Plan

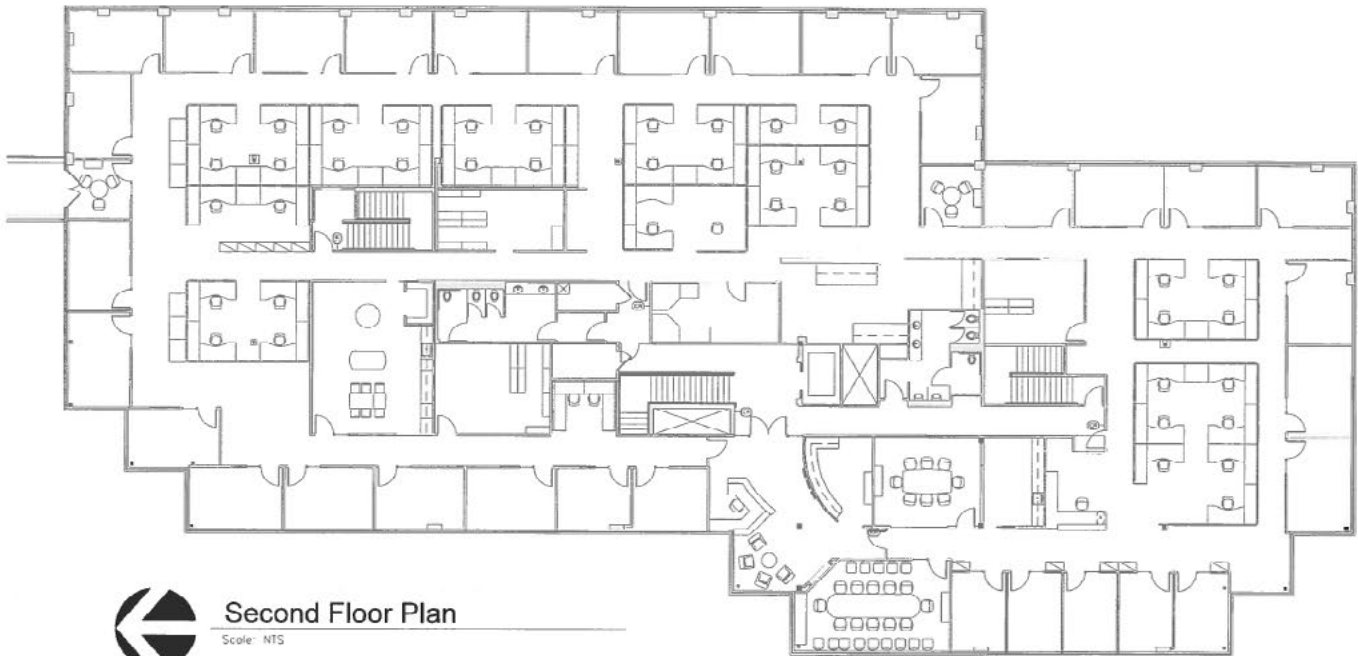


## Floor Plans

**Building 2** Suite 200


**18,666 RSF** (full floor)

Roth Hill  
17,969 SF  
Exp: 2/28/20

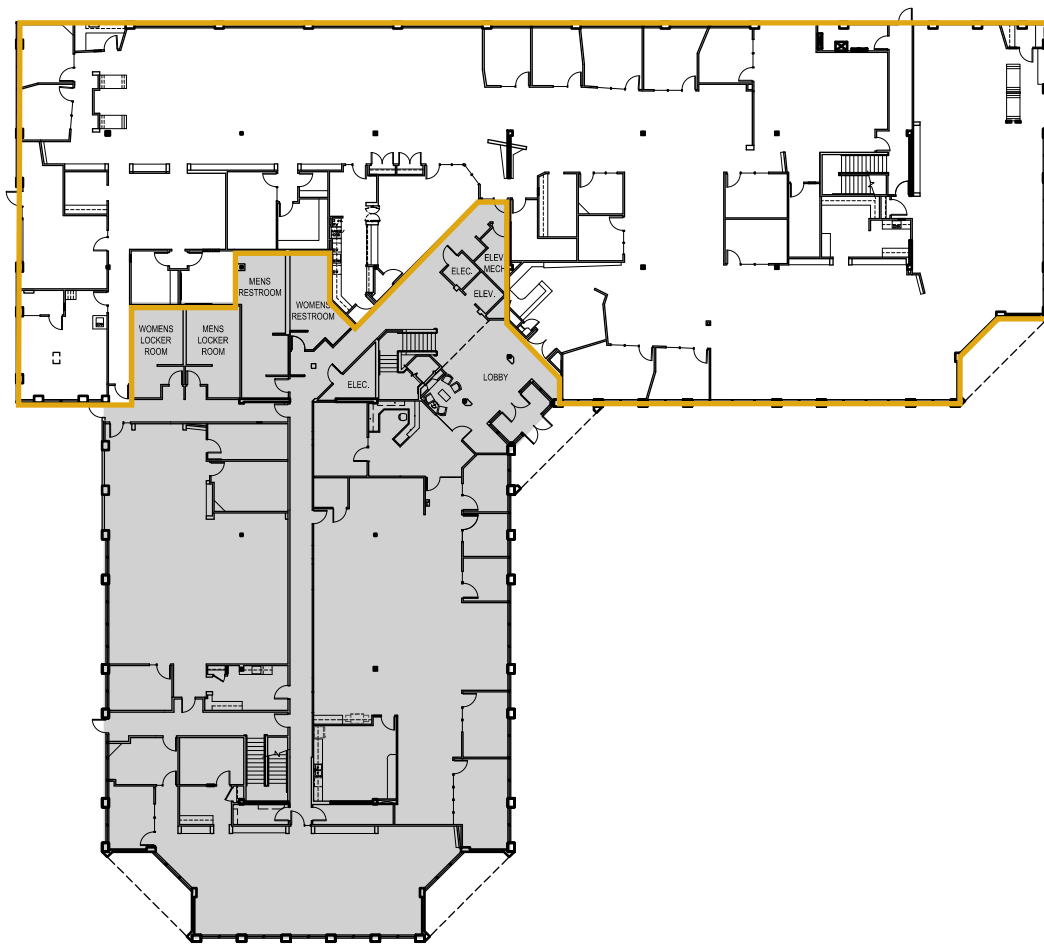


## Floor Plans

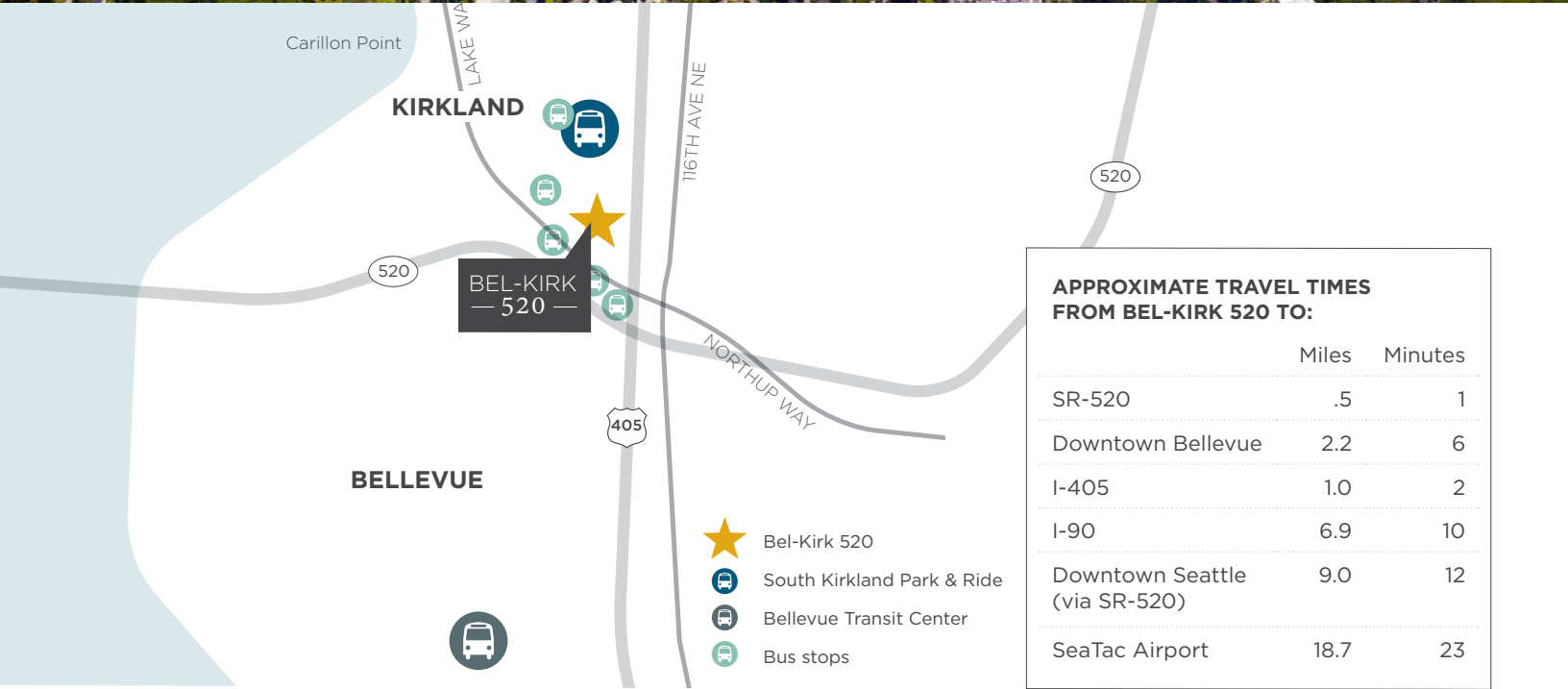
**Building 1** Suite 101

 Space Available

**17,509 RSF**







For leasing information contact:

**Mark Flippo**  
425.974.4007  
mark.flippo@am.jll.com



**Riley Shephard**  
425.462.6932  
riley.shephard@cbre.com





# AMENITIES MAP

## KIRKLAND

- 1 Zoka Coffee
- 2 Bottle and Bull
- 3 Anthony's HomePort
- 4 Cactus Mexican Cuisine
- 5 Homegrown
- 6 Hector's
- 7 Milagro Cantina
- 8 Isarn Thai Soul Kitchen
- 9 Beach House Bar and Grill
- 10 Kidd Valley
- 11 Bin on the Lake
- 12 Starbucks
- 13 Woodmark Hotel
- 14 Le Grand Bistro Americain
- 15 Beach Cafe

## BEL-KIRK AREA

- 16 Poppinjay's Cafe
- 17 Big Fish Grill
- 18 La Quinta Inn
- 19 Burgermaster
- 20 Subway
- 21 QFC
- 22 Starbucks
- 23 Tuscan Stone Wood Fired Pizza
- 24 Lowe's

## BELLEVUE

- 25 Wendy's
- 26 QFC
- 27 Starbucks
- 28 P.F. Chang's
- 30 Red Robin
- 31 520 Bar and Grill
- 32 Palomino
- 33 Westin Hotel
- 34 Maggiano's Little Italy
- 35 Daniel's Broiler
- 36 Hyatt Regency Hotel
- 37 Courtyard By Marriott
- 38 Lunchbox Laboratory
- 39 John Howie Steak

- 40 Wild Ginger
- 41 Whole Foods
- 42 Uwajimaya
- 43 Home Depot
- 44 Tavern Hall
- 45 Joey's
- 46 Earl's
- 47 Lot. No. 3
- 48 Purple Cafe and Wine Bar
- 49 Homegoods
- 50 Trader Joe's
- 51 REI
- 52 Hampton Inn and Suites