

# MERCER OFFICE BUILDING

## OFFICE SUITE FOR LEASE

42690 RIO NEDO - TEMECULA, CA



### PROPERTY HIGHLIGHTS:

- Suite D:  $\pm 3,640$  SF; Suite G:  $\pm 1,570$  SF
- Extensive glass amenities
- Former architectural offices
- High end tenant improvements
- Also available for sale
- Call for appointment
- Lease Rate: \$1.50/SF



**JIM NADAL, CCIM, SIOR • 951.445.4520 • jnadal@leetemecula.com • License #01040679**

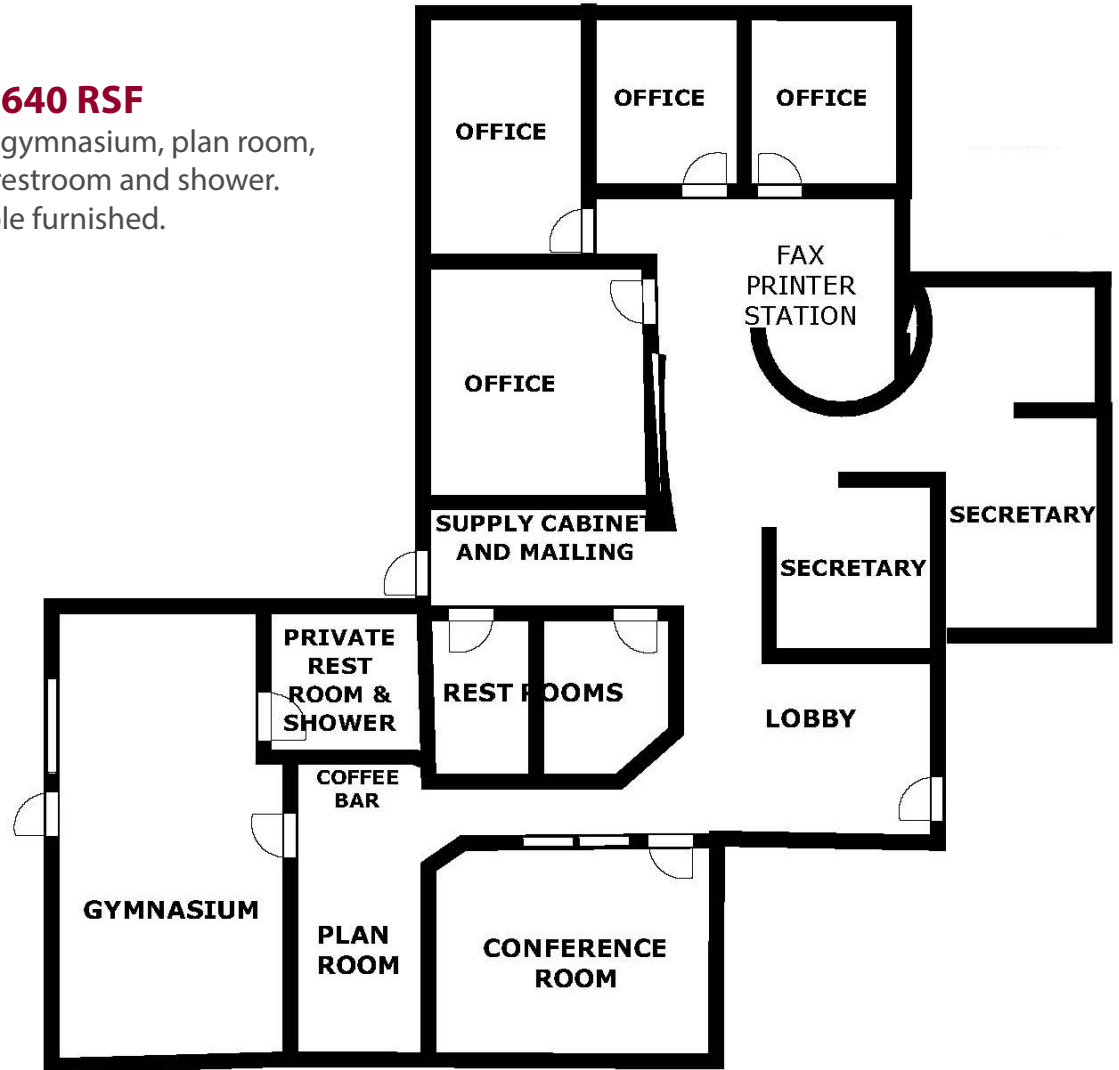
# MERCER OFFICE BUILDING

## OFFICE SUITE FOR LEASE

42690 RIO NEDO - TEMECULA, CA

### SUITE D: ±3,640 RSF

Reception, conference room, gymnasium, plan room,  
4 private offices, cubicles, restroom and shower.  
Optionally available furnished.

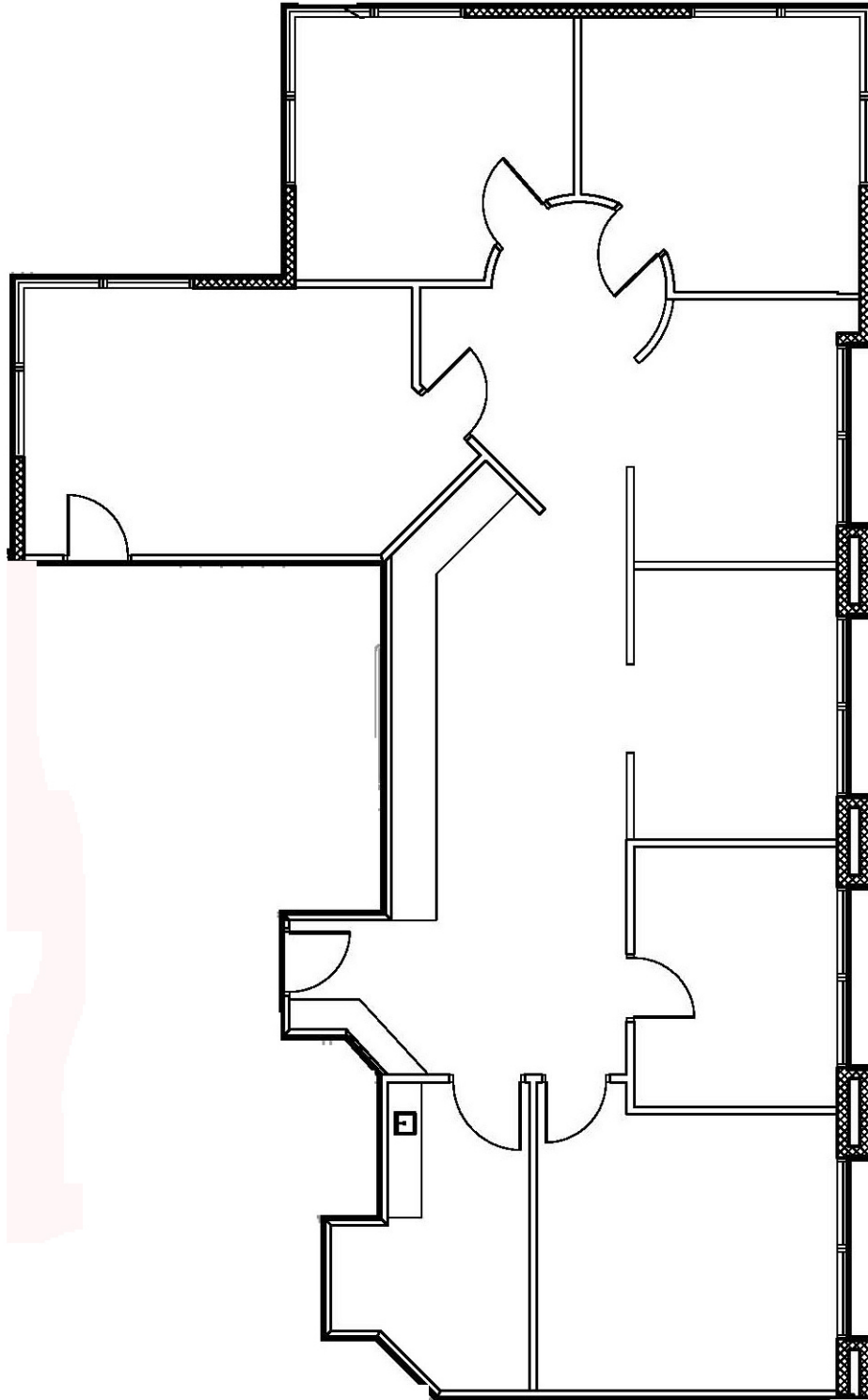


**JIM NADAL, CCIM, SIOR • 951.445.4520 • jnadal@leetemecula.com • License #01040679**

# MERCER OFFICE BUILDING

## OFFICE SUITE FOR LEASE

42690 RIO NEDO - TEMECULA, CA



**SUITE G: ±1,570 RSF**

**JIM NADAL, CCIM, SIOR • 951.445.4520 • jnadal@leetemecula.com • License #01040679**

*No warranty or representation has been made to the accuracy of the foregoing information. Terms of sale or lease and availability are subject to change or withdrawal without notice.*

*Lee & Associates Commercial Real Estate Services, Inc. - Temecula. 25240 Hancock Avenue, Suite 100 - Murrieta, CA 92562 | Corporate ID# 01048055*