



505  
MONTGOMERY

The Premier Montgomery Street Address

For more information contact:

**Scott Harper**

DRE #01143961

415.288.7837

[scott.harper@colliers.com](mailto:scott.harper@colliers.com)

**Brad Van Blois**

DRE #01208137

415.288.7883

[brad.vanblois@colliers.com](mailto:brad.vanblois@colliers.com)





M O N T G O M E R Y



Availabilities

Location

Amenities

Transportation

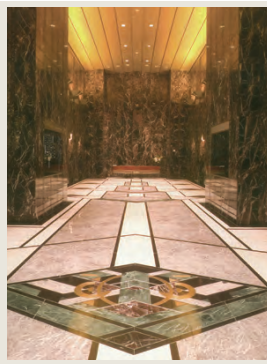
Parking

Floor Plans

Building Specs

Ownership

Contacts



505 Montgomery Street is located in the heart of the North Financial District. With its close proximity to public transportation and easy access to Highway 101 North, this premier Montgomery Street address is a desirable office location within walking distance to restaurants, hotels and business services. Adding to 505 Montgomery Street's charm is San Francisco's most dramatic lobby, abundant natural light throughout. Column-free floor plans provide efficient planning for open and office intensive uses.

Suite	Square Feet	Available	
600	2,979	Now	New spec suite! 7 private offices; conference room, kitchen.
1275	4,040	Now	4 private offices, conference room, kitchenette.
2400/2300	14,569	Now	Spectacular views and window line; 2 interconnecting floors of 8,846 and 5,723 square feet.





505

MONTGOMERY



[Availabilities](#)

**[Location](#)**

[Amenities](#)

[Transportation](#)

[Parking](#)

[Floor Plans](#)

[Building Specs](#)

[Ownership](#)

[Contacts](#)



### Major Hotels ●

- 1 Le Meridian
- 2 Hyatt Regency
- 3 Fairmont
- 4 Mark Hopkins
- 5 The Ritz-Carlton
- 6 St. Francis Hotel
- 7 Hilton Financial District
- 8 Stanford Court Renaissance Hotel
- 9 Grand Hyatt on Union Square
- 10 Palace Hotel
- 11 Hilton Union Square
- 12 Hotel Nikko
- 13 Marriott Marquis
- 14 Omni Hotel
- 15 Mandarin Oriental
- 16 Hotel Vitale

### Major Shopping ●

- 1 Embarcadero Center
- 2 Saks Fifth Avenue
- 3 Macy's
- 4 Neiman Marcus
- 5 Gump's
- 6 Crocker Galleria
- 7 Nordstrom
- 8 Westfield Shopping Centre



### Major Restaurants

- |   |                           |    |                           |
|---|---------------------------|----|---------------------------|
| 1 | Good Luck Cafe            | 8  | SF Soup Company           |
| 2 | Belden Place              | 9  | Cafe Madeleine            |
|   | • B44                     | 10 | Chiaroscuro               |
|   | • Belden Taverna          | 11 | Alfred's Steakhouse       |
|   | • Brindisi Cucina di Mare | 12 | Gambino's                 |
|   | • Cafe Bastille           | 13 | Wexler's                  |
|   | • Cafe Tiramisu           | 14 | Bocadillos                |
|   | • Plouf                   | 15 | Bob's Steak and Chophouse |
| 3 | Fuel Cafe                 | 16 | Mixt Greens               |
| 4 | City Club SF              | 17 | Tommy Toy's               |
| 5 | Miguelito's Gym Cafe      | 18 | Tlloc                     |
| 6 | Latte Express             | 19 | Macellato the Sandwich    |
| 7 | Hunan Homes               | 20 | Wayfare Tavern            |

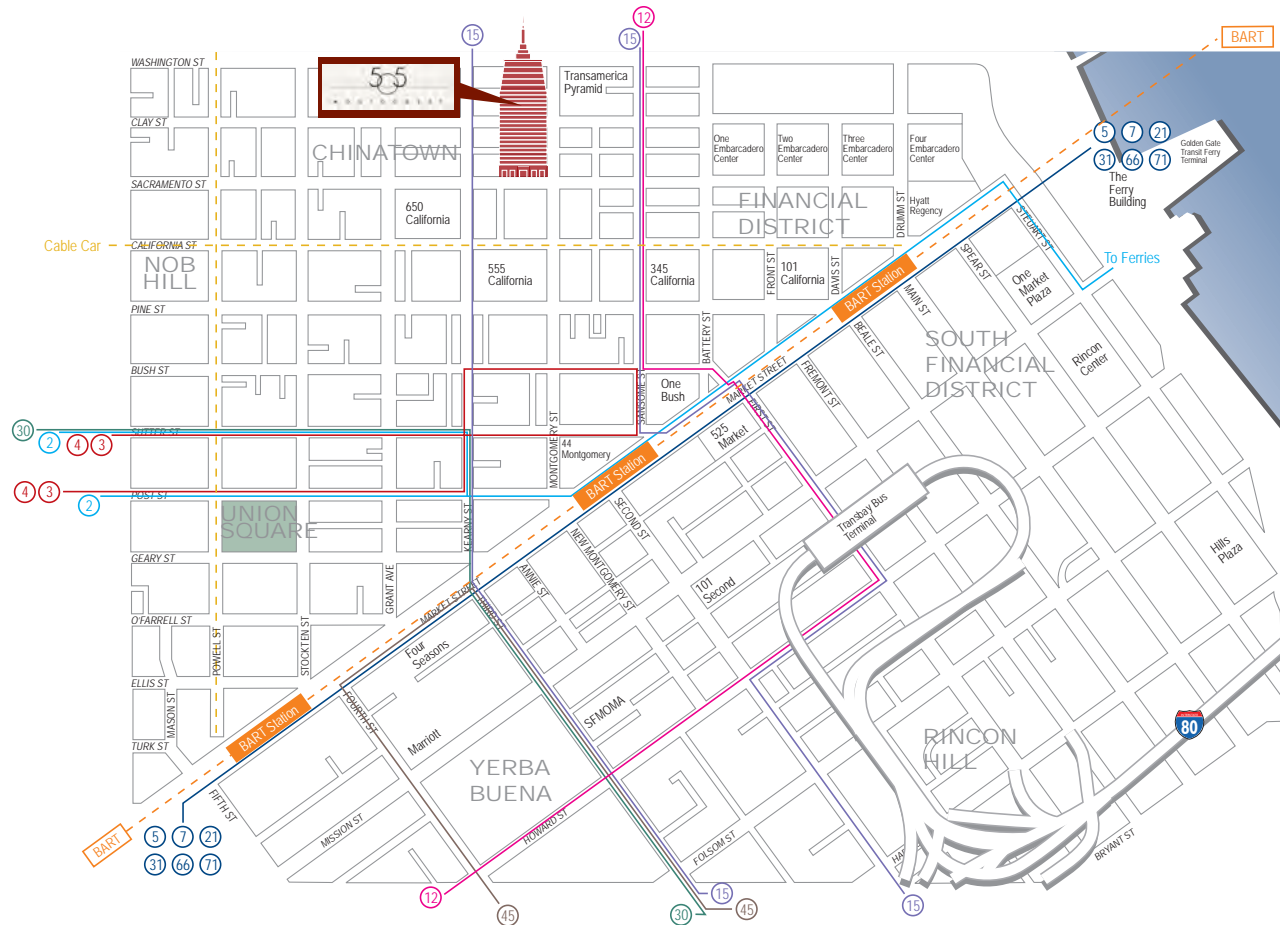




MONTGOMERY



Availabilities Location Amenities **Transportation** Parking Floor Plans Building Specs Ownership Contacts



San Francisco Municipal Transportation (MUNI)

- ② Clement
- ⑤ Fulton
- ⑮ Third Street
- ③① Balboa
- ⑦① Haight / Noriega
- ③ Jackson
- ⑦ Haight
- ⑮ Hayes
- ④⑤ Union / Stockton
- ④ Sutter
- ⑫ Folsom / Pacific
- ③⑦ Stockton
- ④⑥ Quintara
- Cable Car

Bay Area Rapid Transit (BART)

- BART
- BART Station







MONTGOMERY



Availabilities

Location

Amenities

Transportation

**Parking**

Floor Plans

Building Specs

Ownership

Contacts





M O N T G O M E R Y



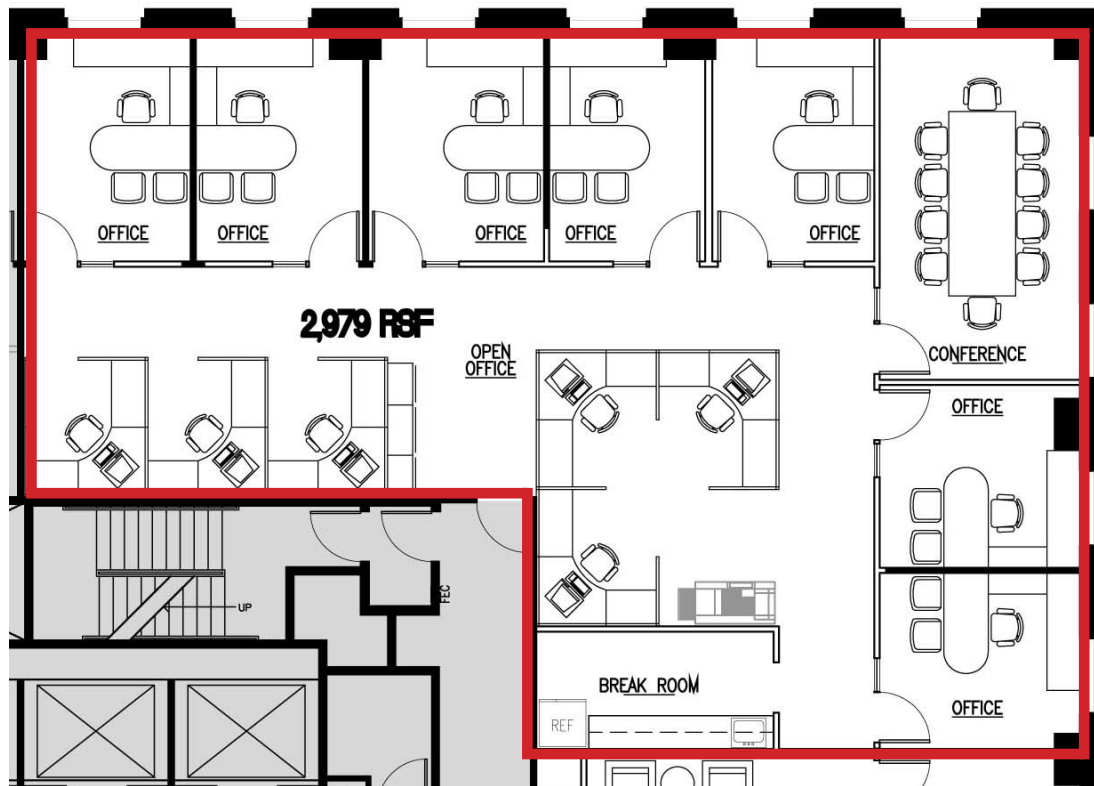
Availabilities Location Amenities Transportation **Parking** Floor Plans Building Specs Ownership Contacts

1	Portmouths Square Garage	27	Airtouch Communications	53	100 First Garage
2	Holiday Inn Financial District	28	Mills Building	54	Transbay Bus Terminal
3	655 Montgomery Garage	29	235 Pine Garage	55	Ampco Parking
4	Golden Gateway Garage	30	Shell Building	56	Auto Park
5	One Maritime Plaza	31	Sutter/Stockton Garage	57	Auto Park
6	601 Montgomery Garage	32	300 Bush Garage	58	Ampco Parking
7	475 Sansome Garage	33	222 Kearny Garage	59	CIC Parking
8	Metro Park	34	One Bush Garage	60	123 Mission Parking
9	Metro Park	35	The Whitehouse Garage	61	Central Parking Systems
10	Metro Park	36	Galleria Park Hotel	62	Moscone Center
11	Metro Park	37	Pacific Telesis Center	63	Kufler Clothiers
12	Car Park	38	Union Square Garage	64	75 Hawthorne Garage
13	600 California Garage	39	Ellis/O'Farrell	65	Second Street Center
14	550 Kearny Garage	40	Yerba Buena	66	Ampco Parking
15	580 California Garage	41	Mission & 4th	67	Pacific Park Management
16	550 California Garage	42	Hearst Parking Center	68	Ampco Parking
17	343 Sansome Garage	43	Metro Park	69	Spear Street Terrace
18	Embarcadero West	44	71 Stevenson Garage	70	Garage
19	Sumitomo Building	45	Central Parking Systems	71	CIC Park
20	50 California Street	46	525 Market Garage	72	168 Folsom Garage
21	St. Mary's Square	47	425 Market Garage	73	168 Folsom Garage
22	Bank of America	48	50 Fremont Center	74	124 Folsom Garage
23	First Interstate Building	49	One Market Plaza	75	Garage
24	201 California Street	50	Alright Parking	76	455 Market Garage
25	100 Pine Garage	51	Ampco Parking	77	Marathon Plaza
26	101 California Street	52	Bridge Terminal		





SUITE 600  
2,979 SQ. FT.



Montgomery Street



MONTGOMERY



Availabilities

Location

Amenities

Transportation

Parking

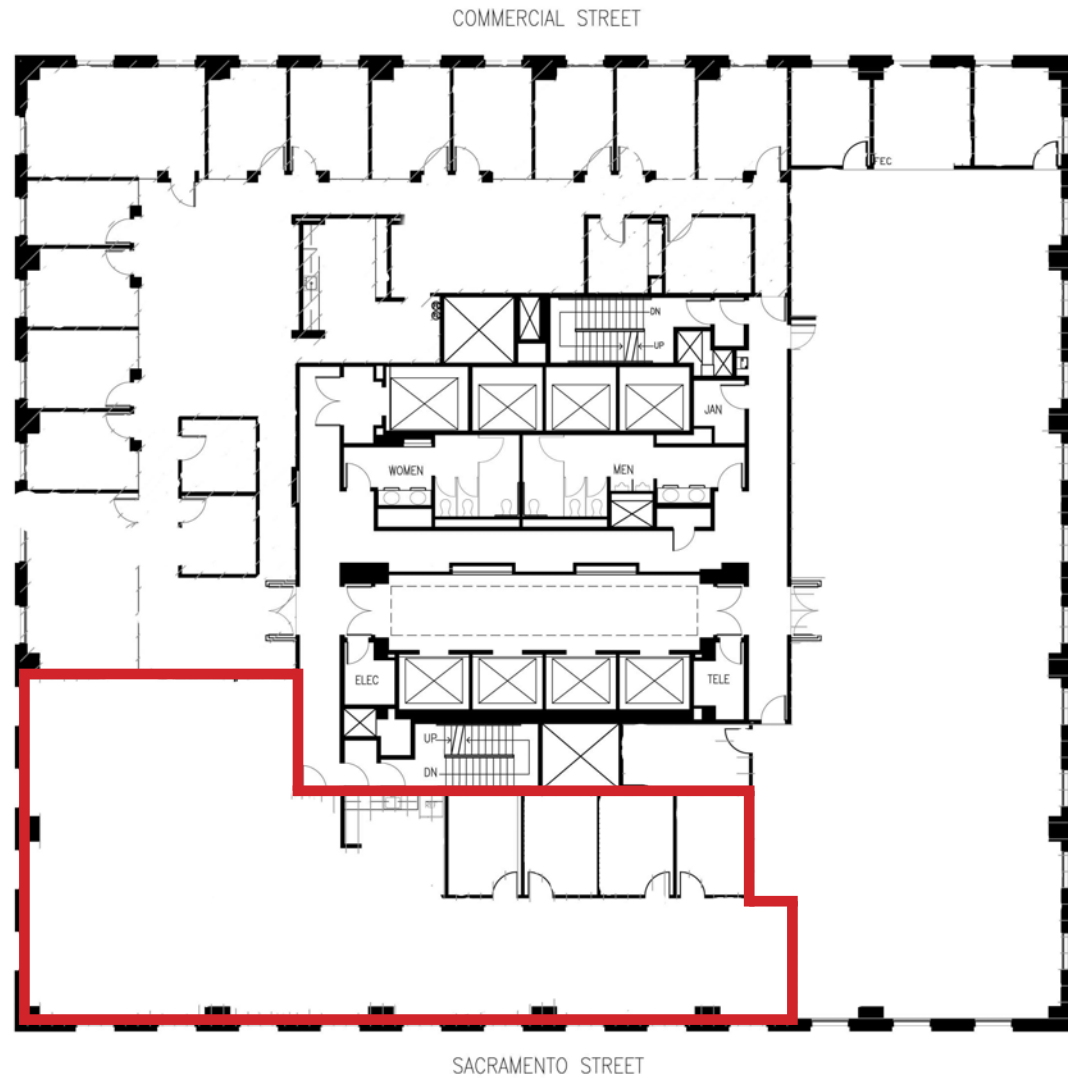
**Floor Plans**

Building Specs

Ownership

Contacts

SUITE 1275  
4,040 SQ. FT.



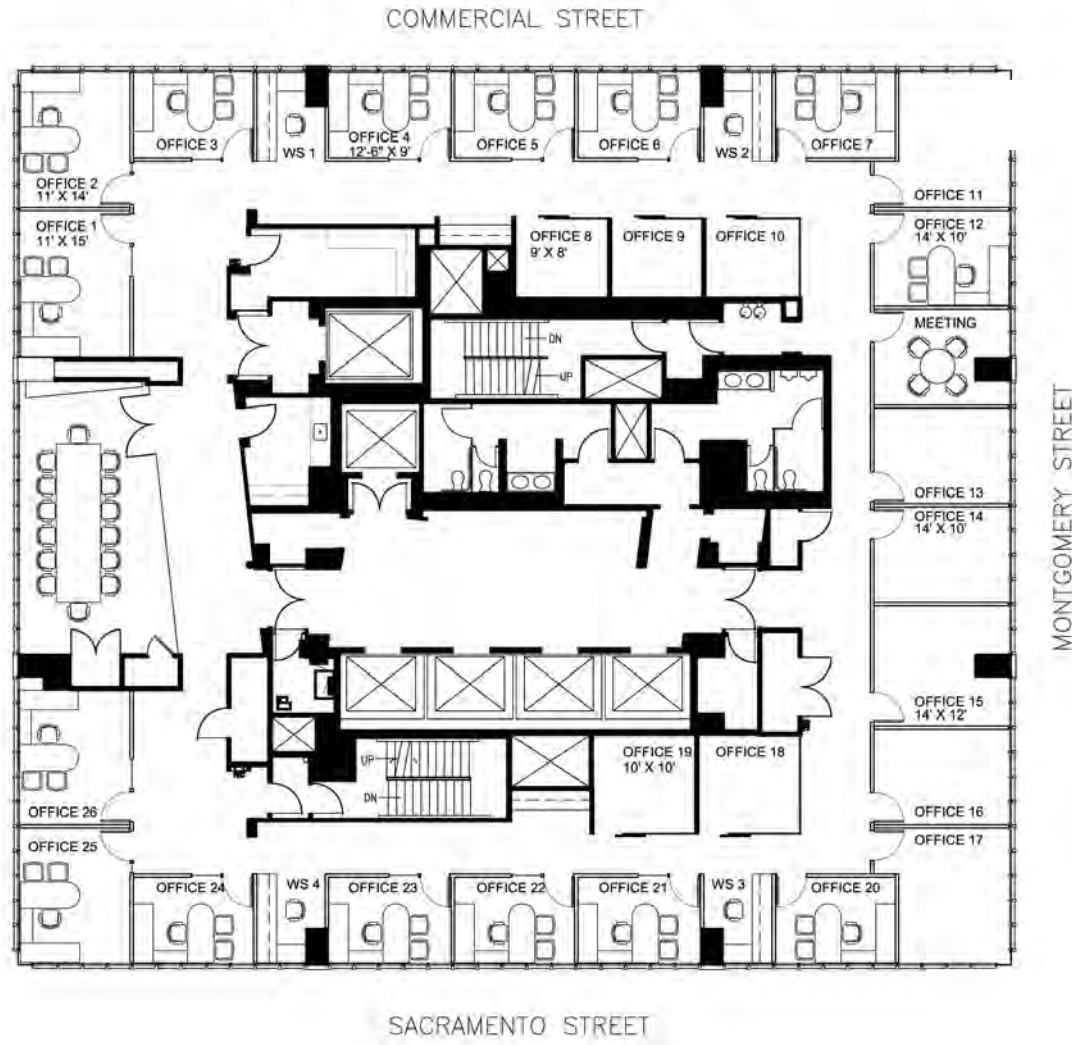


MONTGOMERY



Availabilities Location Amenities Transportation Parking Floor Plans Building Specs Ownership Contacts

23<sup>RD</sup> FLOOR  
HYPOTHETICAL PLAN  
PRIVATE OFFICES  
8,846 SQ. FT.



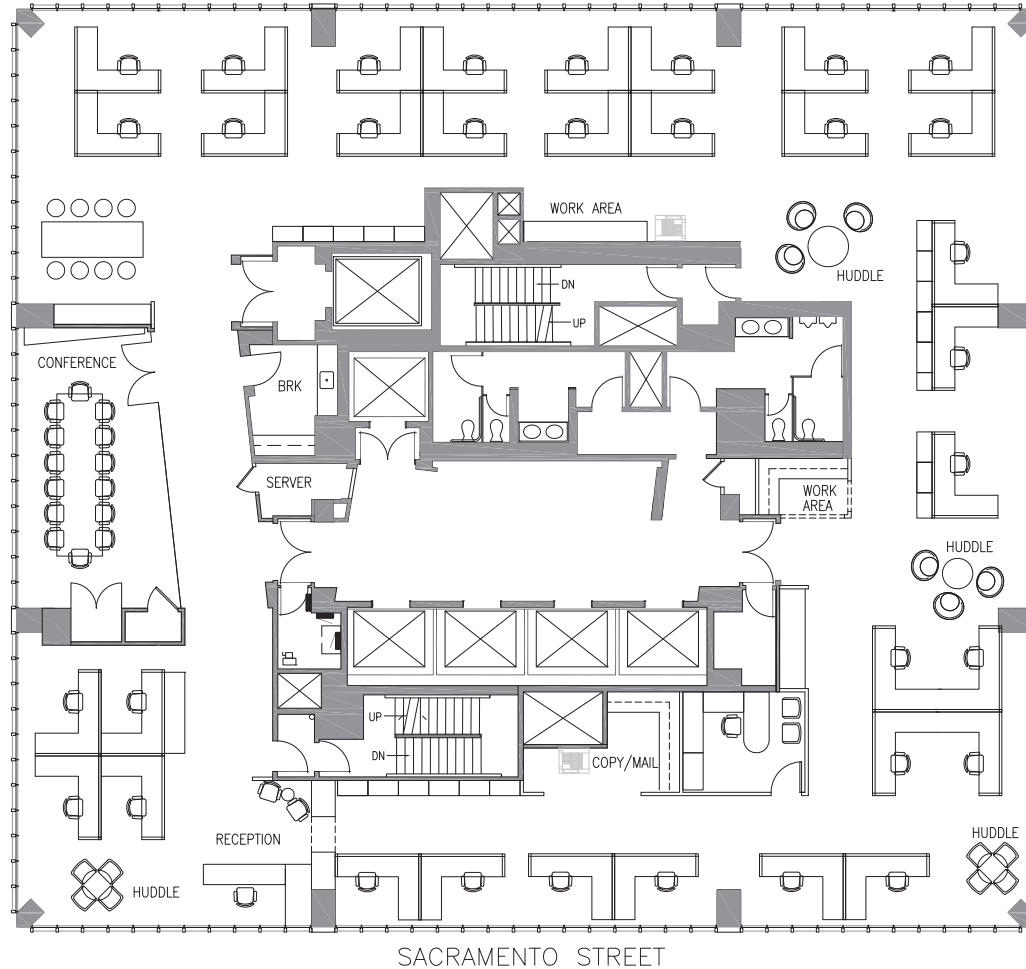


MONTGOMERY



Availabilities Location Amenities Transportation Parking Floor Plans Building Specs Ownership Contacts

23<sup>RD</sup> FLOOR  
HYPOTHETICAL PLAN  
OPEN FLOOR PLAN  
8,846 SQ. FT.



Private Office	1
Workstations	33
Conference	1
Huddle	5







M O N T G O M E R Y



Availabilities

Location

Amenities

Transportation

Parking

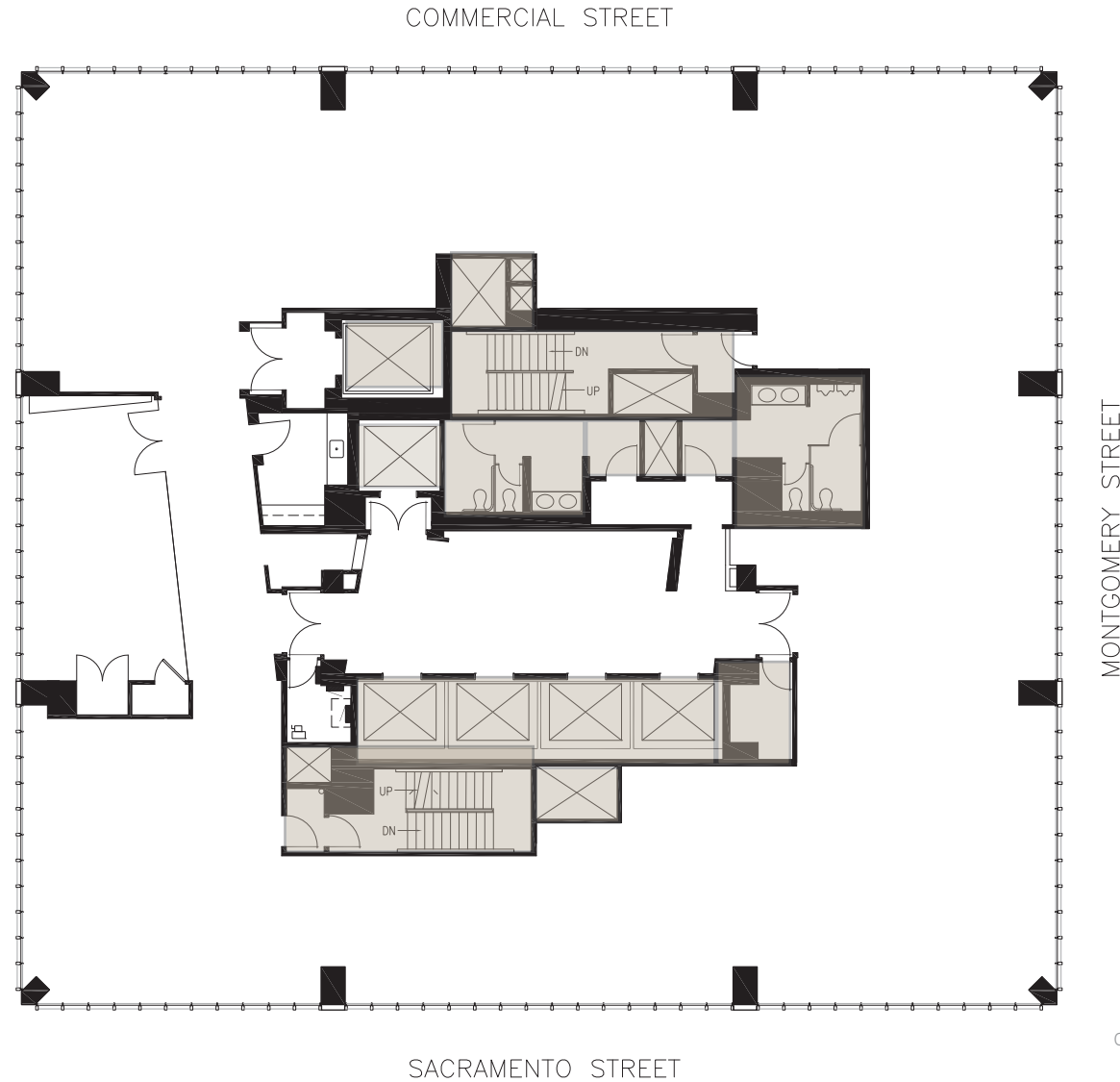
**Floor Plans**

Building Specs

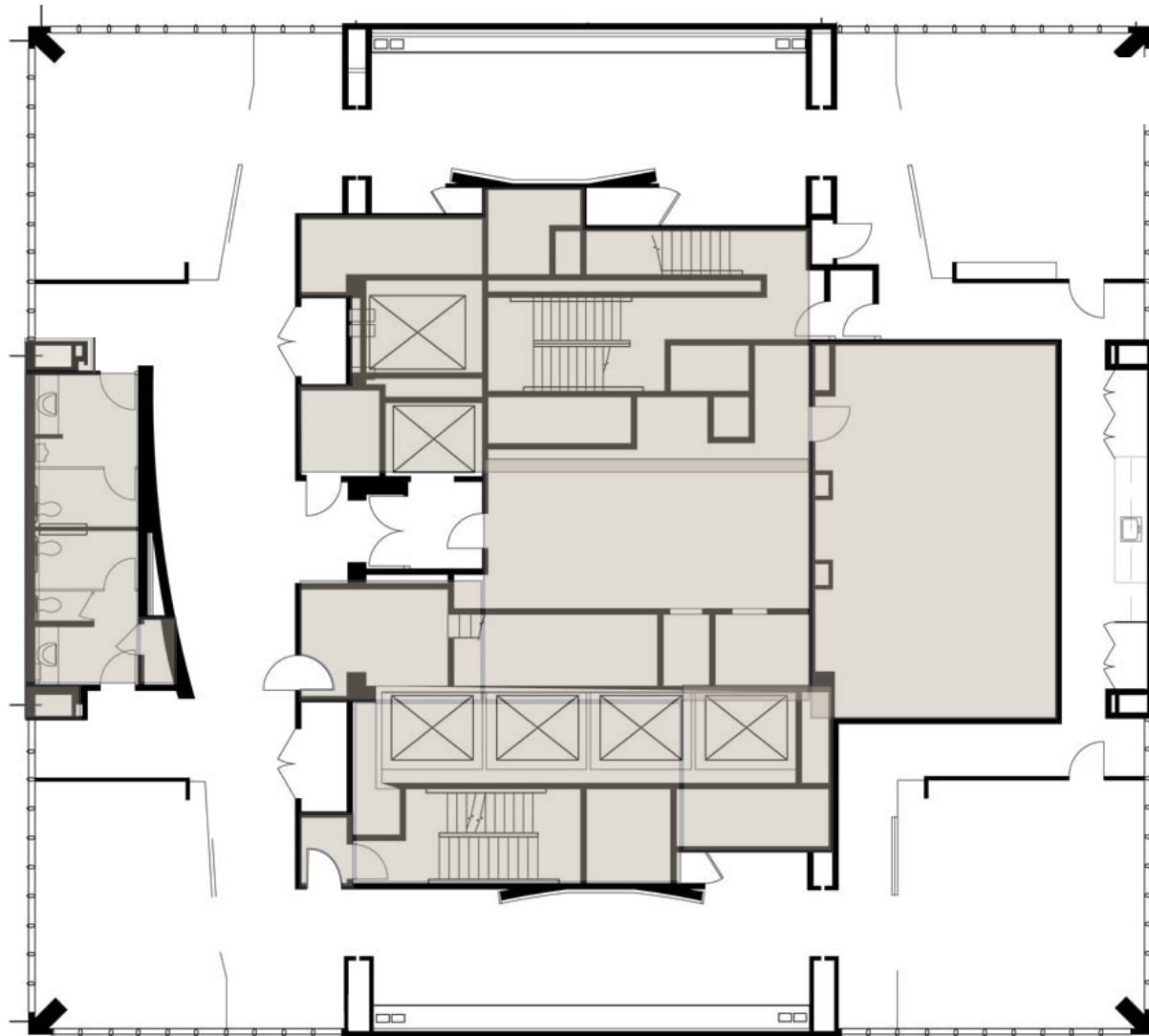
Ownership

Contacts

23<sup>RD</sup> FLOOR  
8,846 SQ. FT.



24<sup>TH</sup> FLOOR  
5,723 SQ. FT.





M O N T G O M E R Y



Availabilities    Location    Amenities    Transportation    Parking    Floor Plans    **Building Specs**    Ownership    Contacts

Address	505 Montgomery
Cross Streets	Sacramento & Montgomery
Project Size	344,186 SF
Floors	24
Average Floor Size	+/- 15,000 SF
Exterior Column Spacing	20'
Moulion Spacing	10' 3/4" on center
Building Security	On-Site 24/7
Building Management	On-Site
Building Hours	Monday-Friday 7:00 am - 6:00 pm Saturday-Sunday 8:00 am - 1:00 pm





M O N T G O M E R Y



[Availabilities](#)

[Location](#)

[Amenities](#)

[Transportation](#)

[Parking](#)

[Floor Plans](#)

[Building Specs](#)

**[Ownership](#)**

[Contacts](#)

RREEF Real Estate acquires and manages investments in commercial and residential property, and real estate securities on behalf of its institutional and private clients worldwide. Its product offering is global and comprehensive, including core, value-enhanced and high yield property investments as well as investments in publicly traded real estate securities. RREEF Real Estate has more than 43.6 billion in assets under management worldwide as of 30 September 2011.

RREEF Real Estate is part of RREEF Alternative Investments, the global alternative investment management business of Deutsche Bank's

Asset Management division. RREEF Alternative Investments consists of three businesses: Real Estate, Infrastructure and Private Equity. Headquartered in New York, RREEF Alternative Investments employs more than 600 investment professionals in 22 cities around the world to help investors meet a wide range of objectives – from diversification, to preservation of capital, to long-term performance.

In San Francisco, RREEF owns and manages three office and retail properties, totalling approximately 850,000 square feet.







For more information contact:

**Scott Harper**

DRE #01143961  
 415.288.7837  
[scott.harper@colliers.com](mailto:scott.harper@colliers.com)

**Brad Van Blois**

DRE #01208137  
 415.288.7883  
[brad.vanblois@colliers.com](mailto:brad.vanblois@colliers.com)

50 California Street  
 Suite 1900  
 San Francisco, CA 94111  
 Ph: 415.788.3100  
 Fx: 415.433.7844  
[www.colliers.com/sanfrancisco](http://www.colliers.com/sanfrancisco)

Managed by:



This document has been prepared by Colliers International for advertising and general information only. Colliers International makes no guarantees, representations or warranties of any kind, expressed or implied, regarding the information including, but not limited to, warranties of content, accuracy and reliability. Any interested party should undertake their own inquiries as to the accuracy of the information. Colliers International excludes unequivocally all inferred or implied terms, conditions and warranties arising out of this document and excludes all liability for loss and damages arising there from. Colliers International is a worldwide affiliation of independently owned and operated companies. This publication is the copyrighted property of Colliers International and /or its licensor(s). © 2012. All rights reserved.