



DARWIN
R E A L T Y



**23379 W. State Route 60
Round Lake, Illinois**

20 Acre Land Site Available for Sale

For additional information,
please contact:

Noel S. Liston
Principal
nliston@darwinrealty.com



Comments

- ±20 Acres available for sale
- Outstanding development potential in Lake County
- Flexible development options for path of growth land
- Low Lake County real estate taxes
- Sale Price: Subject to Offer



970 N. Oaklawn Avenue
Suite 100
Elmhurst, IL 60126

Tel: 630-782-9520
Fax: 630-782-9531
www.darwinrealty.com

Submitted subject to error, change in status, or withdrawal without notice.



DARWIN

R E A L T Y



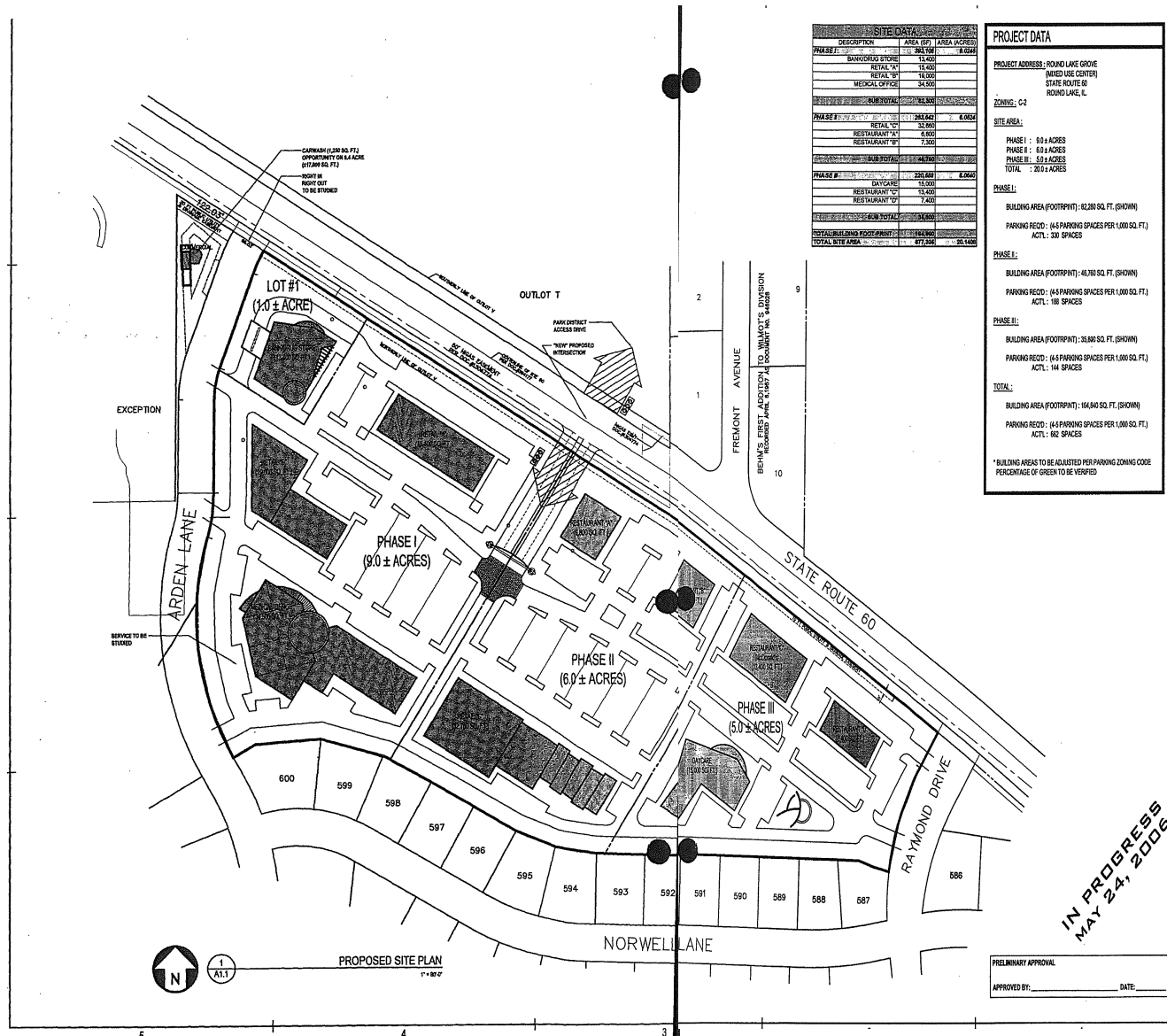
23379 W. State Route 60 Round Lake, Illinois

For additional information,
please contact:

Noel S. Liston
Principal
nliston@darwinrealty.com

970 N. Oaklawn Avenue
Suite 100
Elmhurst, IL 60126

Tel: 630-782-9520
Fax: 630-782-9531
www.darwinrealty.com



BEERS
ARCHITECT & PLANNERS

84 W. BEERS RD.
ARLINGTON HEIGHTS
ILLINOIS 60005
PHONE: 630.472.2200
FAX: 630.472.0455
TEL: 630.472.0455
WWW.BEERSARCHITECTS.COM

CERTIFICATION

I hereby certify that this document has been prepared by me or under my direct supervision and that I am a duly licensed member of the Illinois State Board of Architectural Registration.

EXPIRES 10/30/08

ISSUED 05/24/06

DATE

PROJECT:
ROUND LAKE GROVE MIXED USE CENTER
STATE ROUTE 60
LAKE COUNTY, IL

This document is the property of BEERS ARCHITECTS & PLANNERS. It is to be used only for the project and location specified herein. It is not to be reproduced or used for any other project without the written consent of BEERS ARCHITECTS & PLANNERS, INC.
Copyright © 2006 All Rights Reserved

NO.	DATE	DESCRIPTION

ISSUE RECORD:

SHEET TITLE:
PROJECT DATA
SITE PLAN

PROJECT NUMBER: 06-002
DRAWN BY: JJK
CHECKED BY: JEB

SHEET NUMBER:
A1.1

ROUND LAKE GROVE

IN PROGRESS
MAY 24, 2006

PRELIMINARY APPROVAL

APPROVED BY: _____ DATE: _____