



FOR LEASE

Golden Stone Office Building

33400 9TH AVENUE SOUTH, FEDERAL WAY, WA



Class A office space in West Campus

WILL FRAME
253.722.1412
will.frame@kidder.com

DREW FRAME
253.722.1433
drew.frame@kidder.com

MARK CLIREHUGH, SIOR, CCIM
253.722.1416
mark.clirehugh@kidder.com

**Kidder
Mathews**

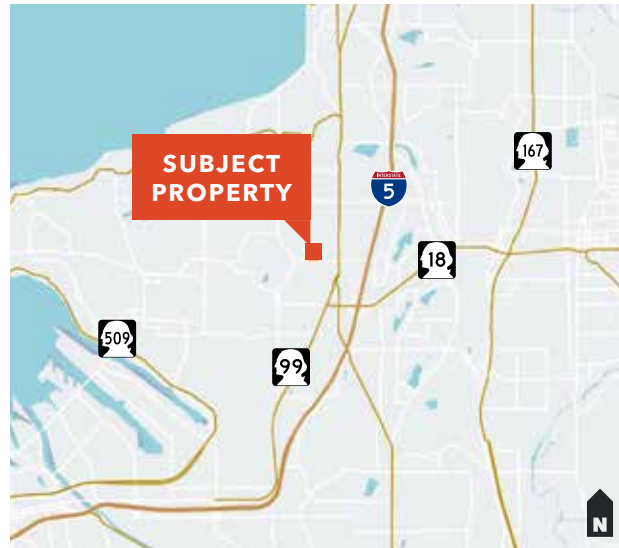
This information supplied herein is from sources we deem reliable. It is provided without any representation, warranty, or guarantee, expressed or implied as to its accuracy. Prospective Buyer or Tenant should conduct an independent investigation and verification of all matters deemed to be material, including, but not limited to, statements of income and expenses. Consult your attorney, accountant, or other professional advisor.

KIDDER.COM

FOR LEASE

Golden Stone Office Building

33400 9TH AVENUE S, FEDERAL WAY, WA



Class "A" Office Space

AVAILABLE 1,559 & 2,077 SF

RATE \$23.00 PSF per year, full service

PARKING on-site covered and surface

LOCATED on 336th and 9th Avenue in the hub of West Campus

ACCESS easy access to Highway 18, Highway 99 and I-5

WILL FRAME
253.722.1412
will.frame@kidder.com

DREW FRAME
253.722.1433
drew.frame@kidder.com

MARK CLIREHUGH, SIOR, CCIM
253.722.1416
mark.clirehugh@kidder.com

KIDDER.COM

This information supplied herein is from sources we deem reliable. It is provided without any representation, warranty, or guarantee, expressed or implied as to its accuracy. Prospective Buyer or Tenant should conduct an independent investigation and verification of all matters deemed to be material, including, but not limited to, statements of income and expenses. Consult your attorney, accountant, or other professional advisor.

 **Kidder
Mathews**

FOR LEASE

Golden Stone Office Building

33400 9TH AVENUE S, FEDERAL WAY, WA



WILL FRAME

253.722.1412

will.frame@kidder.com

DREW FRAME

253.722.1433

drew.frame@kidder.com

MARK CLIREHUGH, SIOR, CCIM

253.722.1416

mark.clirehugh@kidder.com

KIDDER.COM

This information supplied herein is from sources we deem reliable. It is provided without any representation, warranty, or guarantee, expressed or implied as to its accuracy. Prospective Buyer or Tenant should conduct an independent investigation and verification of all matters deemed to be material, including, but not limited to, statements of income and expenses. Consult your attorney, accountant, or other professional advisor.



FOR LEASE

Golden Stone Office Building

33400 9TH AVENUE S, FEDERAL WAY, WA



WILL FRAME
253.722.1412
will.frame@kidder.com

DREW FRAME
253.722.1433
drew.frame@kidder.com

MARK CLIREHUGH, SIOR, CCIM
253.722.1416
mark.clirehugh@kidder.com

KIDDER.COM

This information supplied herein is from sources we deem reliable. It is provided without any representation, warranty, or guarantee, expressed or implied as to its accuracy. Prospective Buyer or Tenant should conduct an independent investigation and verification of all matters deemed to be material, including, but not limited to, statements of income and expenses. Consult your attorney, accountant, or other professional advisor.

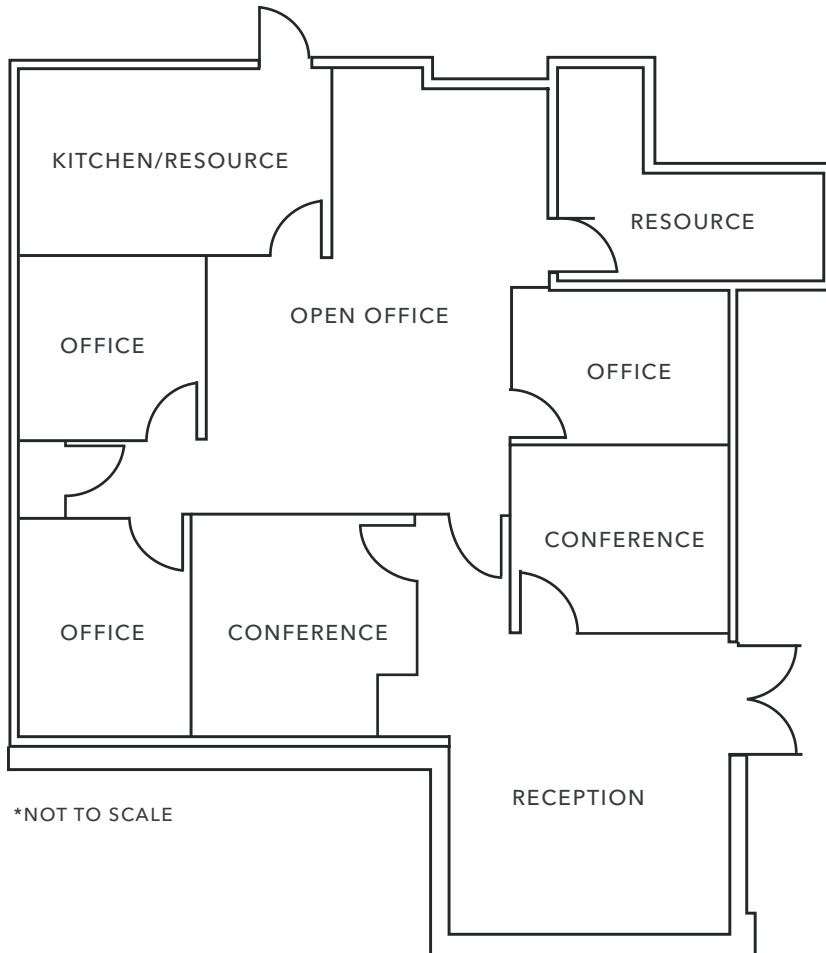


FOR LEASE

Golden Stone Office Building

33400 9TH AVENUE S, FEDERAL WAY, WA

Suite 104



*NOT TO SCALE

05/01/19

DATE AVAILABLE

2,077

SQUARE FEET

\$23.00

LEASE RATE

WILL FRAME

253.722.1422

will.frame@kidder.com

DREW FRAME

253.722.1433

drew.frame@kidder.com

MARK CLIREHUGH, SIOR, CCIM

253.722.1416

mark.clirehugh@kidder.com

KIDDER.COM

This information supplied herein is from sources we deem reliable. It is provided without any representation, warranty, or guarantee, expressed or implied as to its accuracy. Prospective Buyer or Tenant should conduct an independent investigation and verification of all matters deemed to be material, including, but not limited to, statements of income and expenses. Consult your attorney, accountant, or other professional advisor.

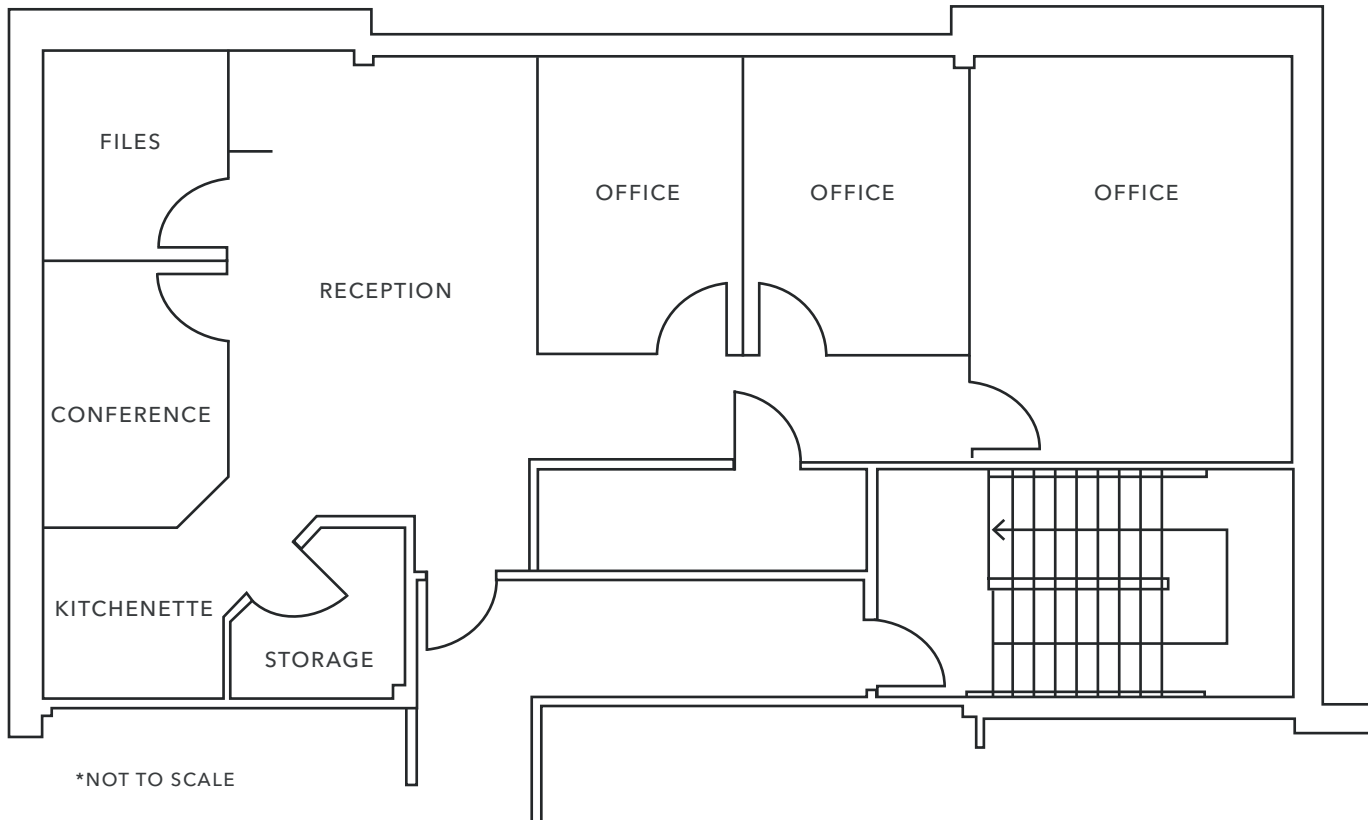


FOR LEASE

Golden Stone Office Building

33400 9TH AVENUE S, FEDERAL WAY, WA

Suite 209



*NOT TO SCALE

05/01/19

DATE AVAILABLE

1,559

SQUARE FEET

\$23.00

LEASE RATE

WILL FRAME

253.722.1422

will.frame@kidder.com

DREW FRAME

253.722.1433

drew.frame@kidder.com

MARK CLIREHUGH, SIOR, CCIM

253.722.1416

mark.clirehugh@kidder.com

KIDDER.COM

This information supplied herein is from sources we deem reliable. It is provided without any representation, warranty, or guarantee, expressed or implied as to its accuracy. Prospective Buyer or Tenant should conduct an independent investigation and verification of all matters deemed to be material, including, but not limited to, statements of income and expenses. Consult your attorney, accountant, or other professional advisor.

