

Multi-Tenant Office & Medical Suites for Lease

1045 E. University Dr • Mesa, AZ 85203



Space Details

- Zoning: RM-4
 - Suite 1: $\pm 1,500$ (\$11.95 MG)
 - Suite 2: $\pm 1,500$ (\$11.95 MG)
 - Suite 3: $\pm 1,500$ (\$10.95 MG)
- Contiguous to $\pm 4,500$ SF



Tyson Breinholt
D 480.966.7513
M 602.315.7131
tbreinholt@cpi.az.com



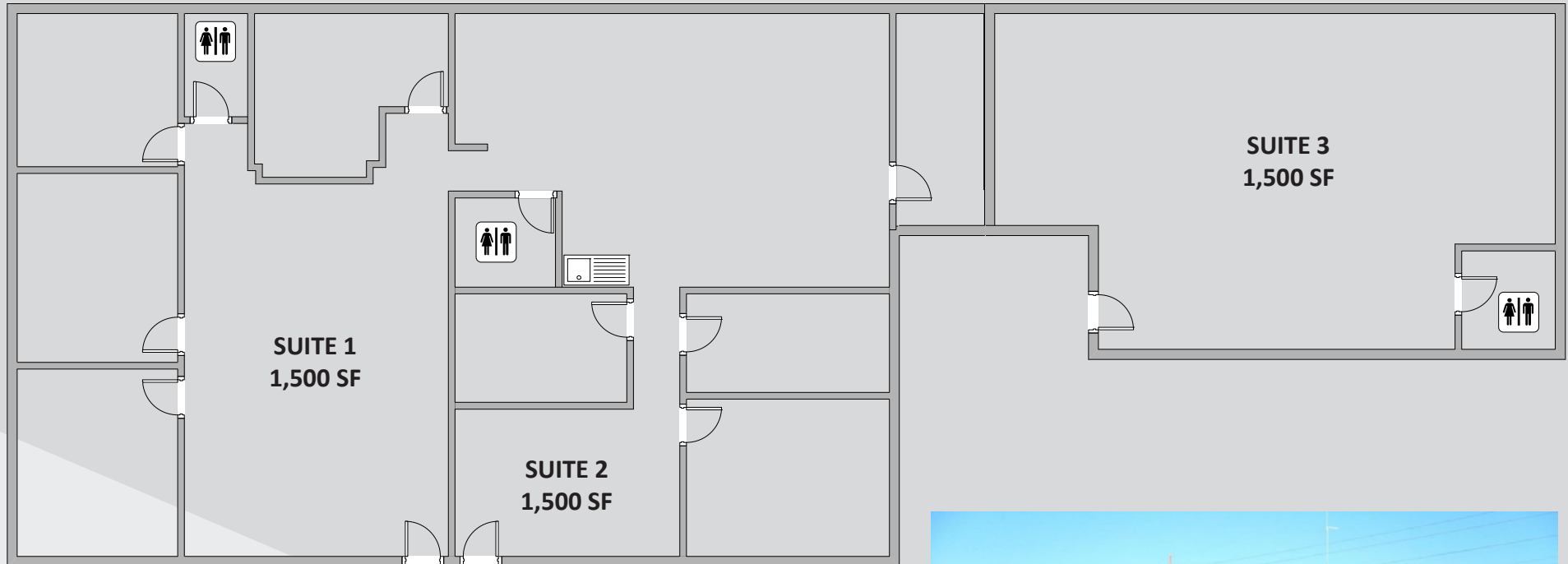
COMMERCIAL PROPERTIES INC.

Locally Owned. Globally Connected. CRPAC International

TEMPE: 2323 W. University Drive, Tempe, AZ 85281 | 480.966.2301
SCOTTSDALE: 8777 N. Gainey Center Dr., Suite 245, Scottsdale, AZ 85258 | www.cpi.az.com

Multi-Tenant Office & Medical Suites for Lease

1045 E. University Dr • Mesa, AZ 85203



Suite Options

- Suite 1: $\pm 1,500$ (\$11.95 MG)
- Suite 2: $\pm 1,500$ (\$11.95 MG)
- Suite 3: $\pm 1,500$ (\$10.95 MG)

Contiguous to $\pm 4,500$ SF



Tyson Breinholt
D 480.966.7513
M 602.315.7131
tbreinholt@cpi.az.com



COMMERCIAL PROPERTIES INC.

Locally Owned. Globally Connected. CFRAC International

TEMPE: 2323 W. University Drive, Tempe, AZ 85281 | 480.966.2301
SCOTTSDALE: 8777 N. Gainey Center Dr., Suite 245, Scottsdale, AZ 85258 | www.cpi.az.com