

FOR SALE OR LEASE

4020 East Lone Mountain Road

36,600 SF on 10.39 Acres

Voit

REAL ESTATE SERVICES



Asking \$2,750,000

Property Details

- **±36,600 SF** industrial building
 - ±25,600 SF two-story office
 - ±11,000 SF warehouse/service bays
 - ±9,000 SF covered storage (not included in total square footage calculation)
- **±10.39 Acres** (gated, fenced, paved, and lighted)
- Freeway visibility
- Zoning: M-2
- APN: 123-31-801-003 & 123-31-801-004

Tenant & Financial Info

- American Institute of Technology
- 10,200 SF leased with 3.46 acres of yard
- Expires: August 31, 2017
- **Projected Income and Expenses** (6/1/13 - 5/31/14)

Rental Revenue:	\$335,359
Expenses:	\$140,437
NOI:	\$194,922
Cap Rate*:	7%

*Based upon 28% occupancy

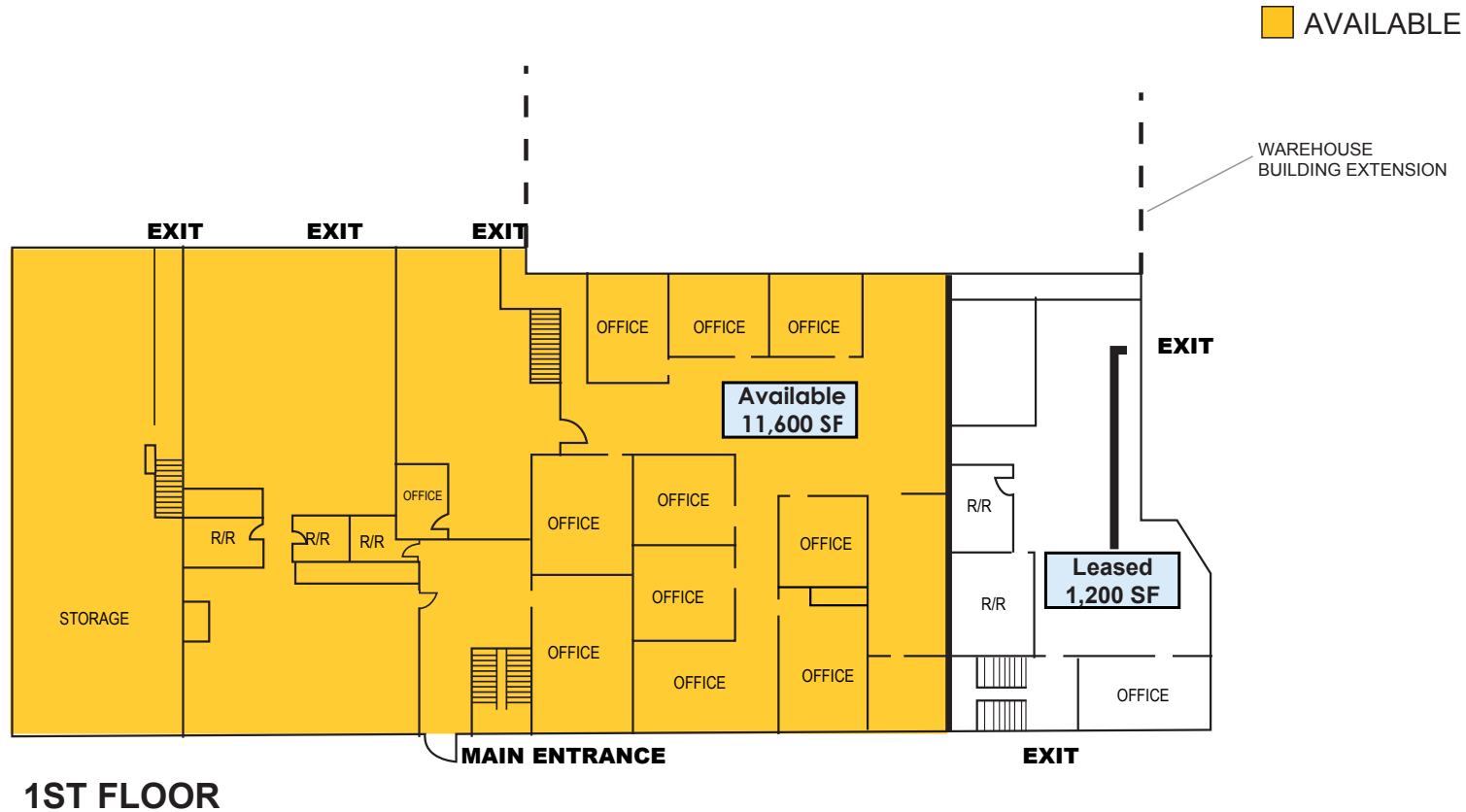
Available For Lease

- **26,400 SF Available**
 - Office: 18,400 SF
 - Warehouse: 8,000 SF
- Yard: 4.09 Acres
- Call for Pricing Details

FOR SALE OR LEASE

4020 East Lone Mountain Road

36,600 SF on 10.39 Acres



The information contained herein has been obtained from sources we deem reliable. While we have no reason to doubt its accuracy, we do not guarantee it.

Garrett Toft
Vice President
Lic #BS.0061824
702.734.4503
gtoft@voitco.com

Zac Zaher
Associate
Lic #BS.0143683
702.734.4544
zzaher@voitco.com

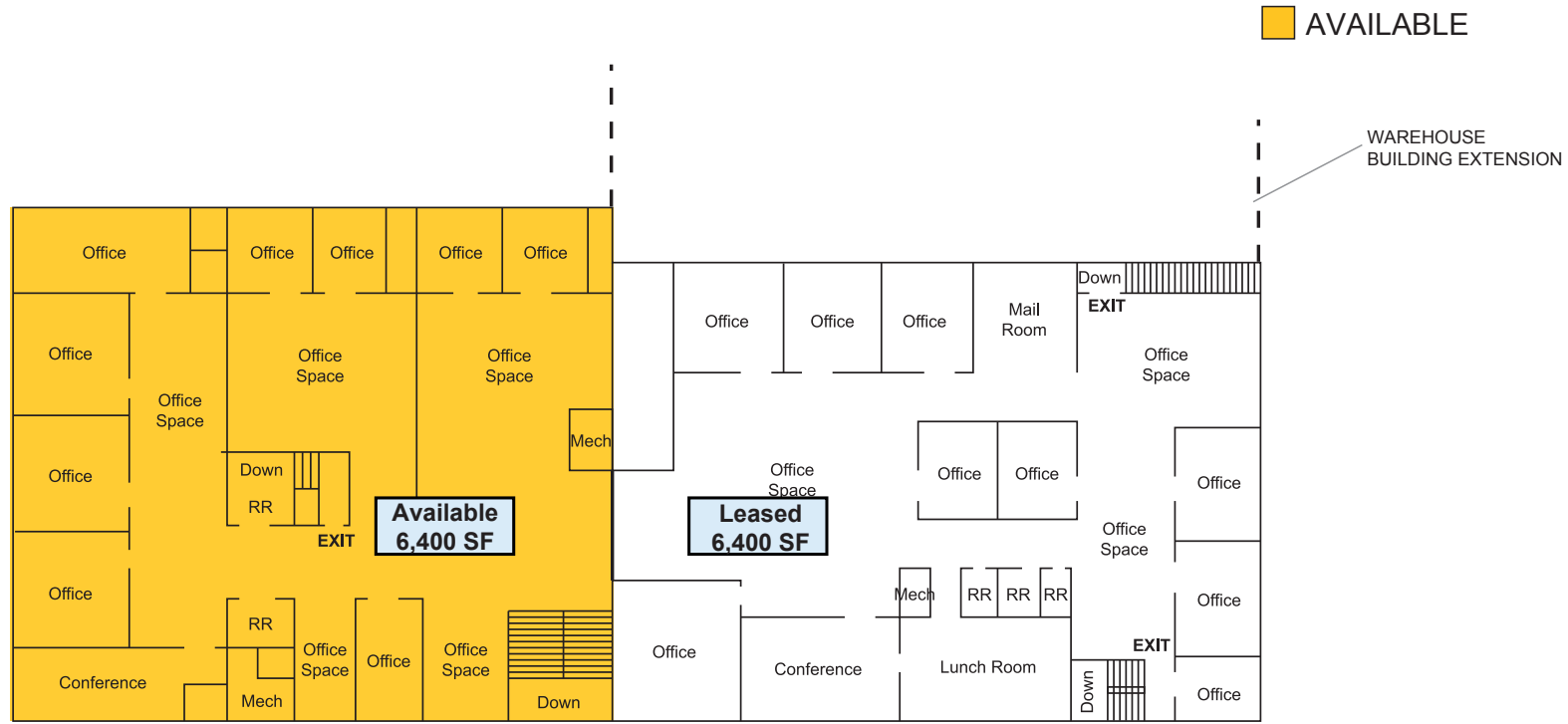
Voit
REAL ESTATE SERVICES

6385 S. Rainbow Blvd., Suite 100, Las Vegas, NV 89118 • 702.734.4500 • 702.733.7690 Fax • Lic #01333376 | www.voitco.com

FOR SALE OR LEASE

4020 East Lone Mountain Road

36,600 SF on 10.39 Acres



2ND FLOOR

The information contained herein has been obtained from sources we deem reliable. While we have no reason to doubt its accuracy, we do not guarantee it.

Garrett Toft
Vice President
Lic #BS.0061824
702.734.4503
gtoft@voitco.com

Zac Zaher
Associate
Lic #BS.0143683
702.734.4544
zzaher@voitco.com

Voit
REAL ESTATE SERVICES

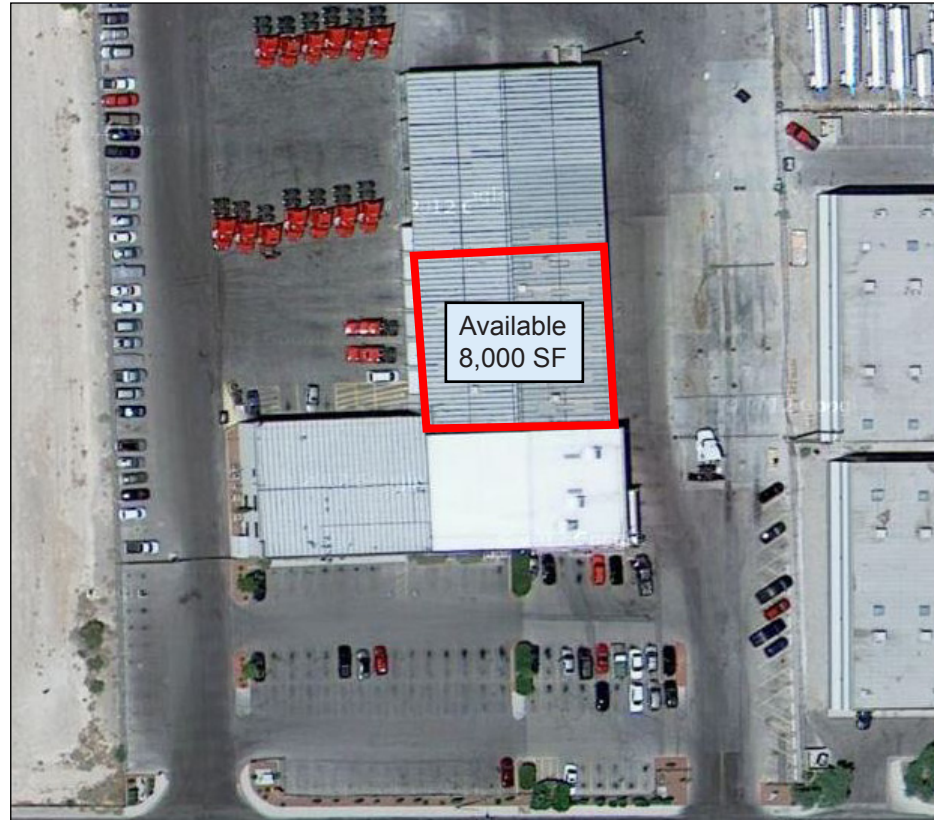
6385 S. Rainbow Blvd., Suite 100, Las Vegas, NV 89118 • 702.734.4500 • 702.733.7690 Fax • Lic #01333376 | www.voitco.com



FOR SALE OR LEASE

4020 East Lone Mountain Road

36,600 SF on 10.39 Acres



Warehouse Features:

- 8,000 SF Available
- 9 Grade Doors
- 3 Service Wells

The information contained herein has been obtained from sources we deem reliable. While we have no reason to doubt its accuracy, we do not guarantee it.

Garrett Toft
Vice President
Lic #BS.0061824
702.734.4503
gtoft@voitco.com

Zac Zaher
Associate
Lic #BS.0143683
702.734.4544
zzaher@voitco.com

Voit
REAL ESTATE SERVICES

6385 S. Rainbow Blvd., Suite 100, Las Vegas, NV 89118 • 702.734.4500 • 702.733.7690 Fax • Lic #01333376 | www.voitco.com