

# FOR LEASE

4 P & N Drive Greenville, SC 29611



## ±14,839 SF Industrial Building

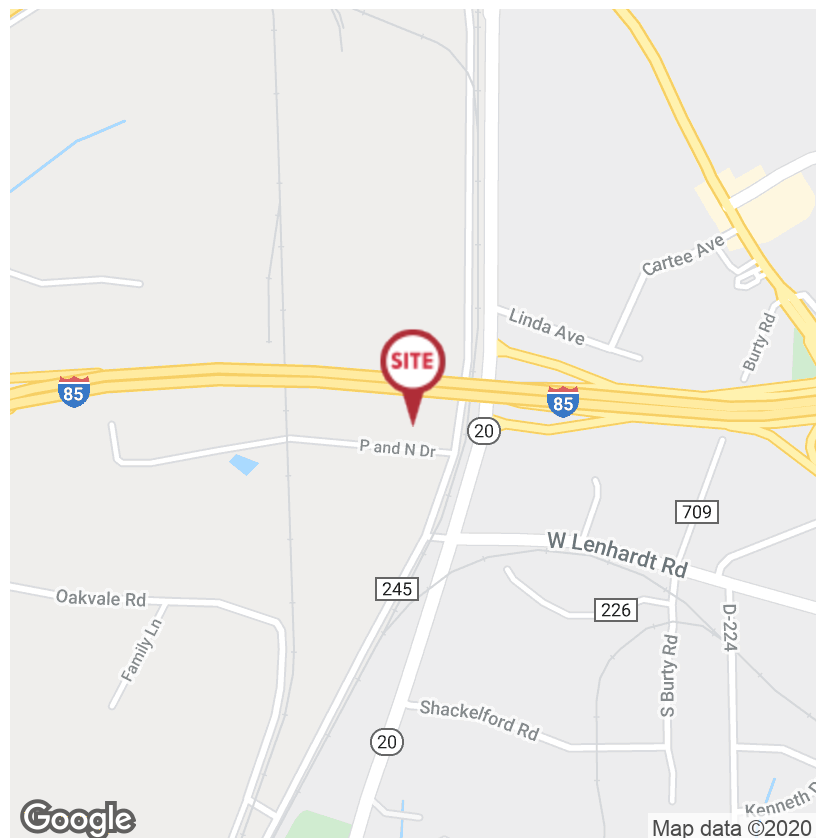
Lease rate: \$4,000/month MG

- (1) Warehouse Office
- (2) Restroom
- (3) Dock doors with levelers
- (1) Drive-in door
- Fully sprinkled (Wet)
- 14' height
- 3 Phase power
- Zoned: I-1
- Lease rate: \$3.23/SF/MG

### DEMOGRAPHICS

STATS	POPULATION	AVG. HH INCOME
1 MILE	2,920	\$51,932
5 MILES	86,497	\$54,385
10 MILES	294,080	\$57,362

\* Figures shown represent estimates



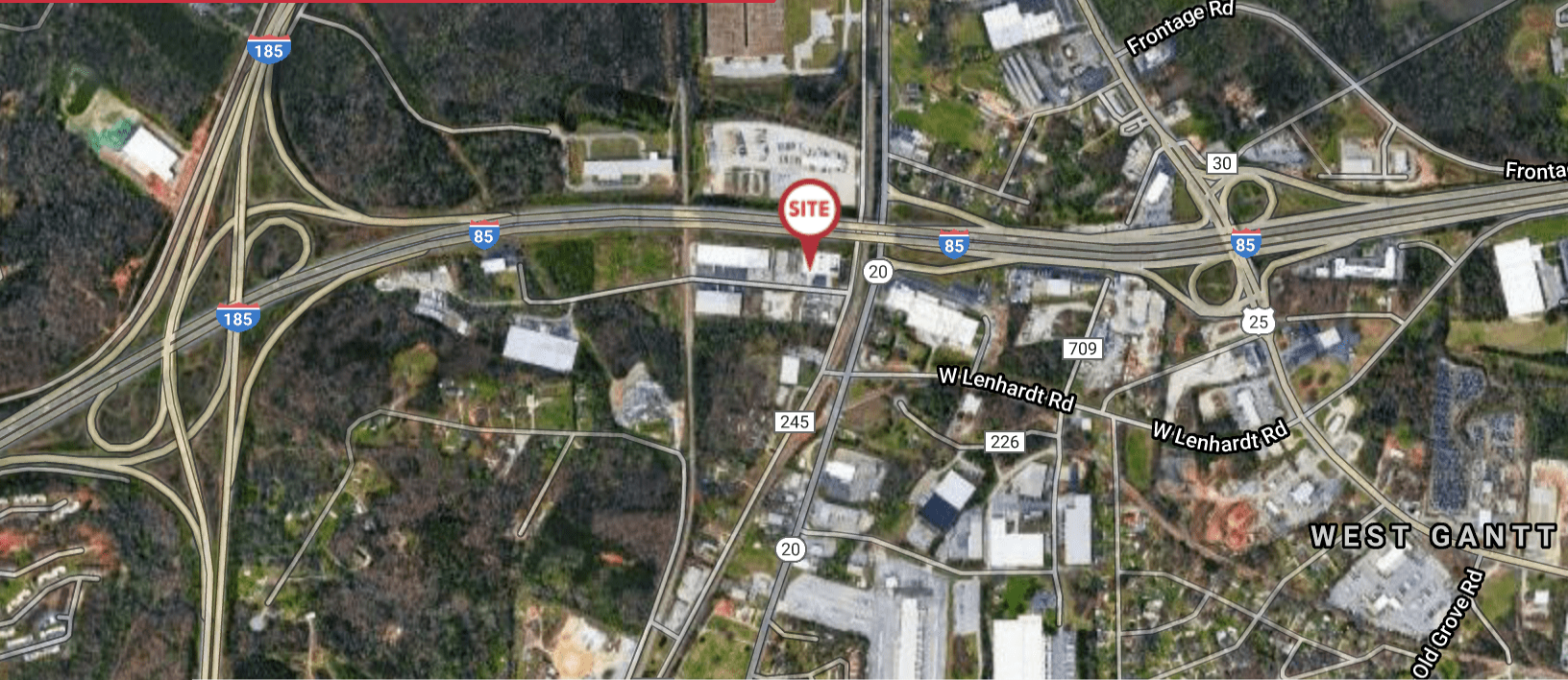
✉ **Frank "Towers" Rice, Jr., CCIM**  
O: +1 864 678 5963  
C: +1 864 420 4279  
trice@naiearlefurman.com

No Warranty Or Representation, Express Or Implied, Is Made As To The Accuracy Of The Information Contained Herein, And The Same Is Submitted Subject To Errors, Omissions, Change Of Price, Rental Or Other Conditions, Prior Sale, Lease Or Financing, Or Withdrawal Without Notice, And Of Any Special Listing Conditions Imposed By Our Principals. No Warranties Or Representations Are Made As To The Condition Of The Property Or Any Hazards Contained Therein Are Any To Be Implied.

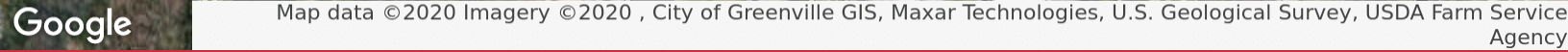
📍 **101 E Washington St**  
Greenville, SC 29601  
naief.com

# FOR LEASE

4 P & N Drive Greenville, SC 29611



Map data ©2020 Imagery ©2020, City of Greenville GIS, Maxar Technologies, U.S. Geological Survey, USDA Farm Service Agency



✉ Frank "Towers" Rice, Jr., CCIM  
O: +1 864 678 5963  
C: +1 864 420 4279  
trice@naiearlefurman.com

No Warranty Or Representation, Express Or Implied, Is Made As To The Accuracy Of The Information Contained Herein, And The Same Is Submitted Subject To Errors, Omissions, Change Of Price, Rental Or Other Conditions, Prior Sale, Lease Or Financing, Or Withdrawal Without Notice, And Of Any Special Listing Conditions Imposed By Our Principals. No Warranties Or Representations Are Made As To The Condition Of The Property Or Any Hazards Contained Therein Are Any To Be Implied.

**NAI** Earle Furman