



8,000 SQ. FT. WAREHOUSE SPACE FOR LEASE

LOCATED IN PRIME EAST WILLIAMSBURG

FEATURES:

- 8,000 Sq. Ft. One-Story Warehouse
- Mezzanine Office Area
- 22' Ceiling Height
- 1 Drive-In Door

NEARBY:

- Brooklyn-Queens Expressway
- Long Island Expressway
- Kosciuszko Bridge
- Pulaski Bridge

Transportation:

-  **Q54 (Metropolitan Ave / Gardner Ave)**
-  **Jefferson St (15 min walk)**



LEASE PRICE:

UPON REQUEST

1250 METROPOLITAN AVENUE, BROOKLYN, NY

BLOCK: 2952

LOT: 1

ZONING: M3-1

For Information About This Property
Contact Exclusive Agent:

Abraham Lowy, Associate Broker
alow@pinnaclereny.com
718-784-8488



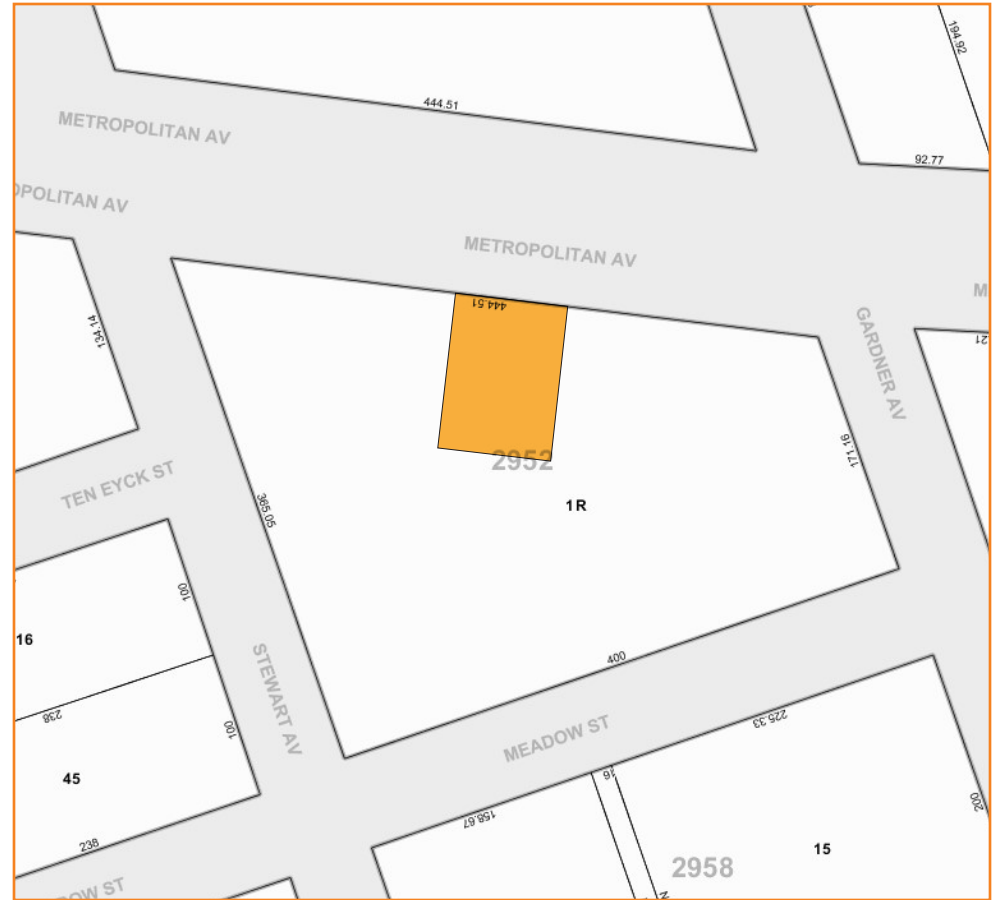
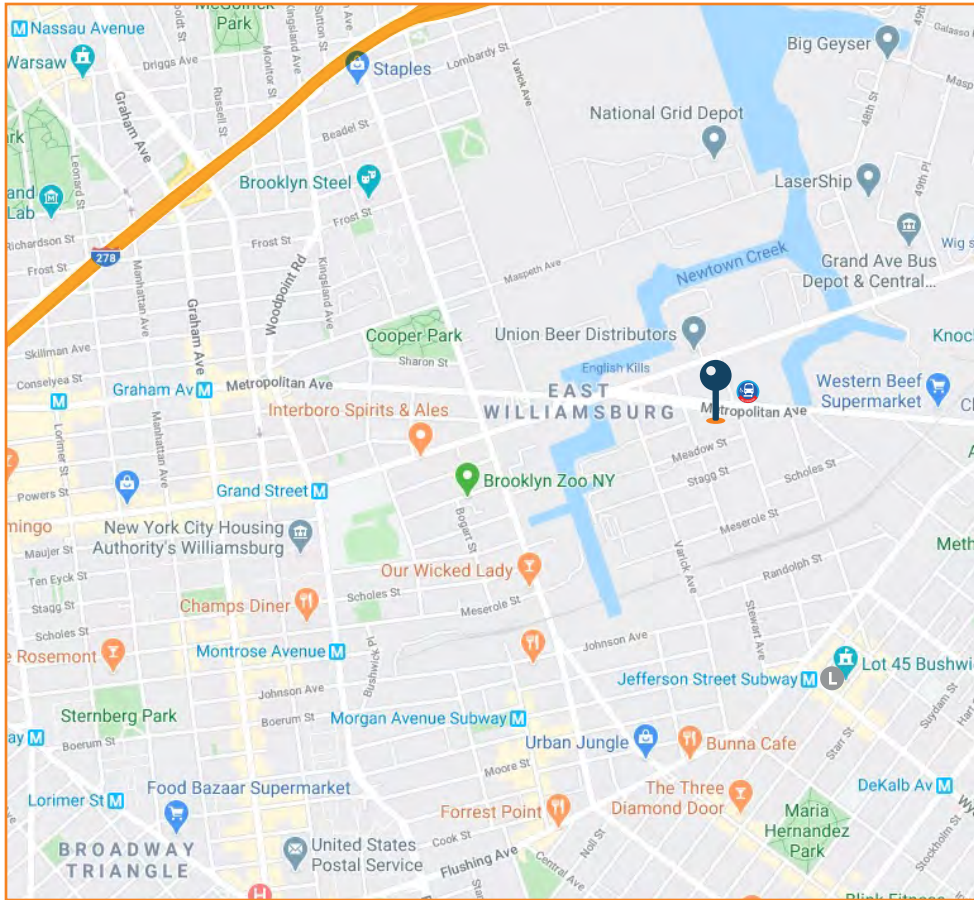
PINNACLE REALTY

OF NEW YORK, LLC

www.pinnacle-ny.com

34-07 Steinway Street, Suite 202
Long Island City, NY 11101

718-784-8282





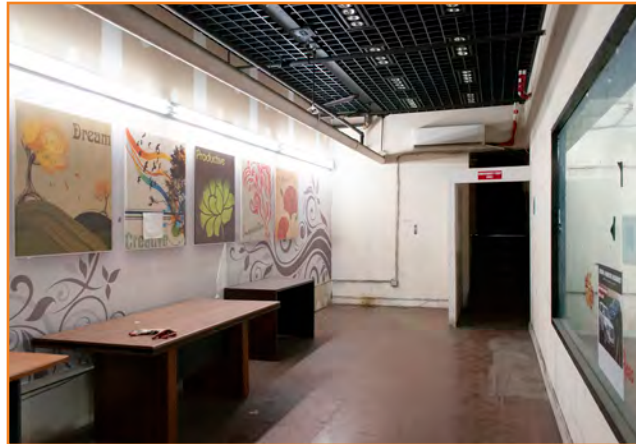
PINNACLE REALTY

OF NEW YORK, LLC

www.pinnaclereny.com

34-07 Steinway Street, Suite 202
Long Island City, NY 11101

718-784-8282





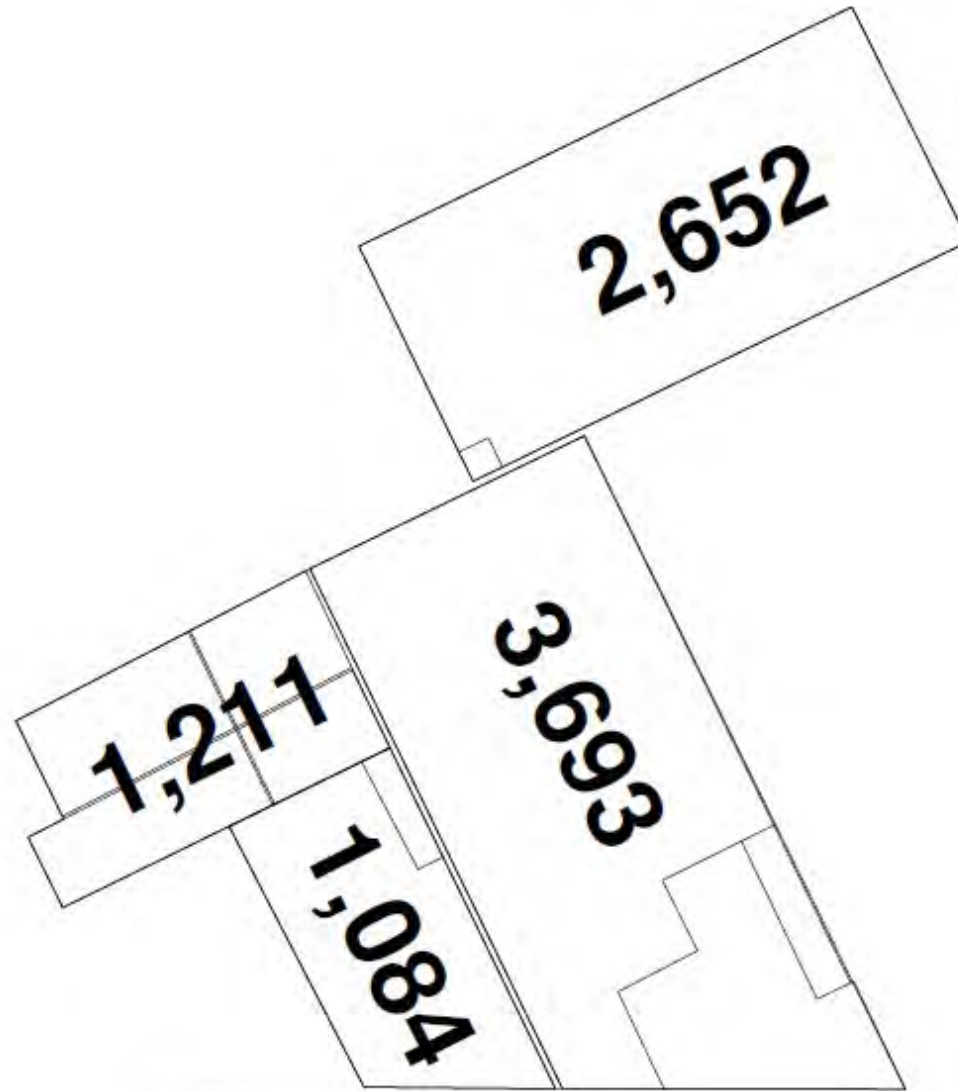
PINNACLE REALTY

OF NEW YORK, LLC

www.pinnaclereny.com

34-07 Steinway Street, Suite 202
Long Island City, NY 11101

718-784-8282



$$2,652 + 3,693 + 1,084 + 1,211 = 8,640$$