



COMMERCIAL REAL ESTATE CONSULTANTS

WWW.CRCNATIONWIDE.COM

UTAH COMMERCIAL - DOWNTOWN OFFICE/RETAIL WITH PARKING

308 West 300 South, Salt Lake City 84101

FOR SALE OR LEASE

PROPERTY INFORMATION

- 4,200 SF Total
- Divisible to 3,600 SF
- Exceptional Downtown Location
- Abundant Parking
- Concrete Floors
- Open Office Space
- Outdoor Patio Area
- Minutes from Gateway and City Creek Shopping Centers
- Easy Access to I-15, I-80

SALE PRICE REDUCED!

~~\$525,000.00~~
\$495,000.00

LEASE RATE:
~~\$9.00/SF NNN~~
\$7.50/SF NNN



DEMOGRAPHICS

	1 MILE	3 MILE	5 MILE
Population	15,672	134,221	224,408
Households	8,286	55,025	87,467
Avg Household Income	\$31,929	\$37,780	\$42,054

CHECK US OUT AT...



cRc Nationwide | 6135 S. Stratler Street, Suite A | Murray, UT 84107 | 801.617.1700 Office | 801.617.1701 Fax

KELLEN KONCAR
KELLEN.KONCAR@CRCNATIONWIDE.COM

WEST HARADIN
WEST.HARADIN@CRCNATIONWIDE.COM

801.617.1700

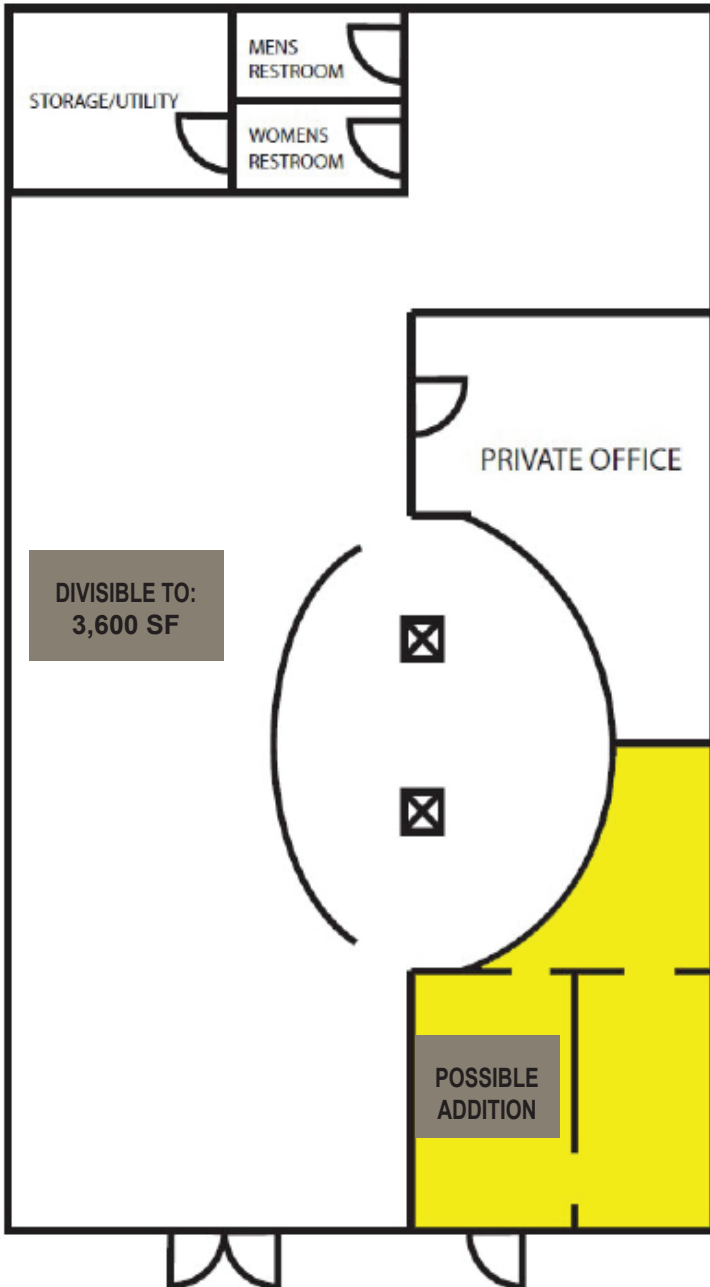


COSTAR
POWER BROKER AWARD
TOP FIRM
2010, 2011, 2012, 2013, 2014



COMMERCIAL REAL ESTATE CONSULTANTS

WWW.CRCNATIONWIDE.COM



cRc Nationwide | 6135 S. Stratler Street, Suite A | Murray, UT 84107 | 801.617.1700 Office | 801.617.1701 Fax

This information is given with the understanding that all negotiations and/or real estate activity related to the property described above shall be conducted through this cRc Nationwide office. The above information while not guaranteed, was obtained from sources we believe to be reliable.

KELLEN KONCAR
KELLEN.KONCAR@CRCNATIONWIDE.COM

WEST HARADIN
WEST.HARADIN@CRCNATIONWIDE.COM

801.617.1700



**COSTAR
POWER BROKER AWARD
TOP FIRM
2010, 2011, 2012, 2013, 2014**