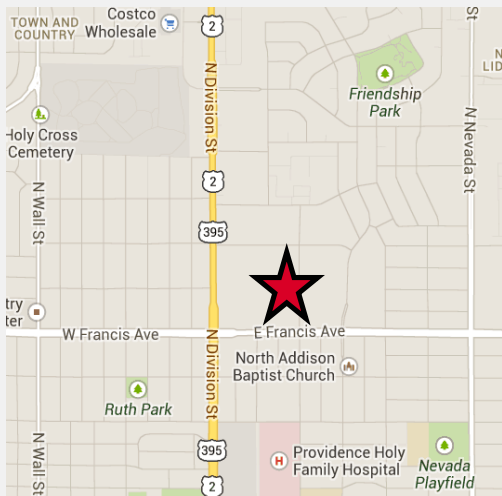


Commercial Land for Lease

66,660 SF / 1.53 Acres

6500 N. Lidgerwood, Spokane, WA



Parcel Numbers:

36293.2113: 12,150 SF ±

36293.2114: 12,150 SF ±

36293.2115: 12,150 SF ±

36293.2116: 14,010 SF ±

36293.2117: 16,200 SF ±

Zoning:

General Commercial -
Allows 70' Building
Height

Population Within:

1 Mile: 17,924

3 Miles: 103,911

5 Miles: 184,651

Traffic Counts:

5,800 Cars Per Day

Contact Information:

Chris Bell, SIOR

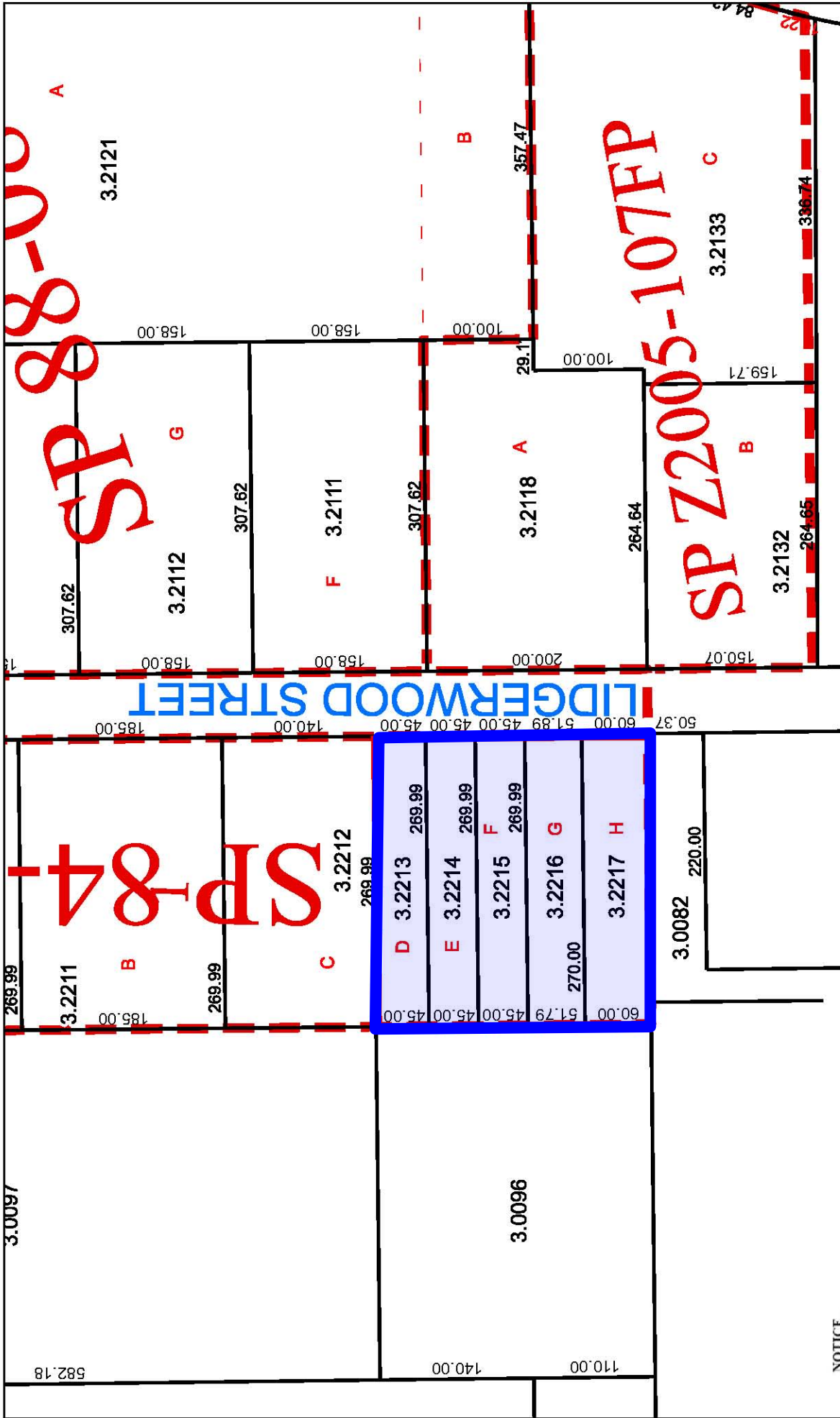
509 622 3538

cbell@naiblack.com

Black Commercial, Inc.
801 W Riverside, Suite 300
Spokane, WA 99201
direct 509 623 1000
fax 509 622 3500
www.naiblack.com



The information contained herein has been given to us by the owner of the property or other sources we deem reliable. We have no reason to doubt its accuracy, but we do not guarantee it. All information should be verified prior to purchase or lease.



NOTICE

This sketch is furnished as a courtesy only, by First American Title Insurance Company, and it IS NOT a part of any title commitment or policy of title insurance.
 This sketch is furnished solely for the purpose of assisting in locating the premises and does not purport to show all highways, roads or easements affecting the property. No reliance should be placed upon this sketch for the location or dimensions of the property and no liability is assumed for the correctness thereof.