

The Power Financial Building - Florida City



Office Space for Lease

33004 S Dixie Hwy
Homestead, FL 33034

LOCATION

Across from Home Depot on US 1

TOTAL SQ. FT

8,000 SF

TRAFFIC COUNTS

33,000 vpd on U.S. Hwy 1
9,800 vpd on SW 8th St

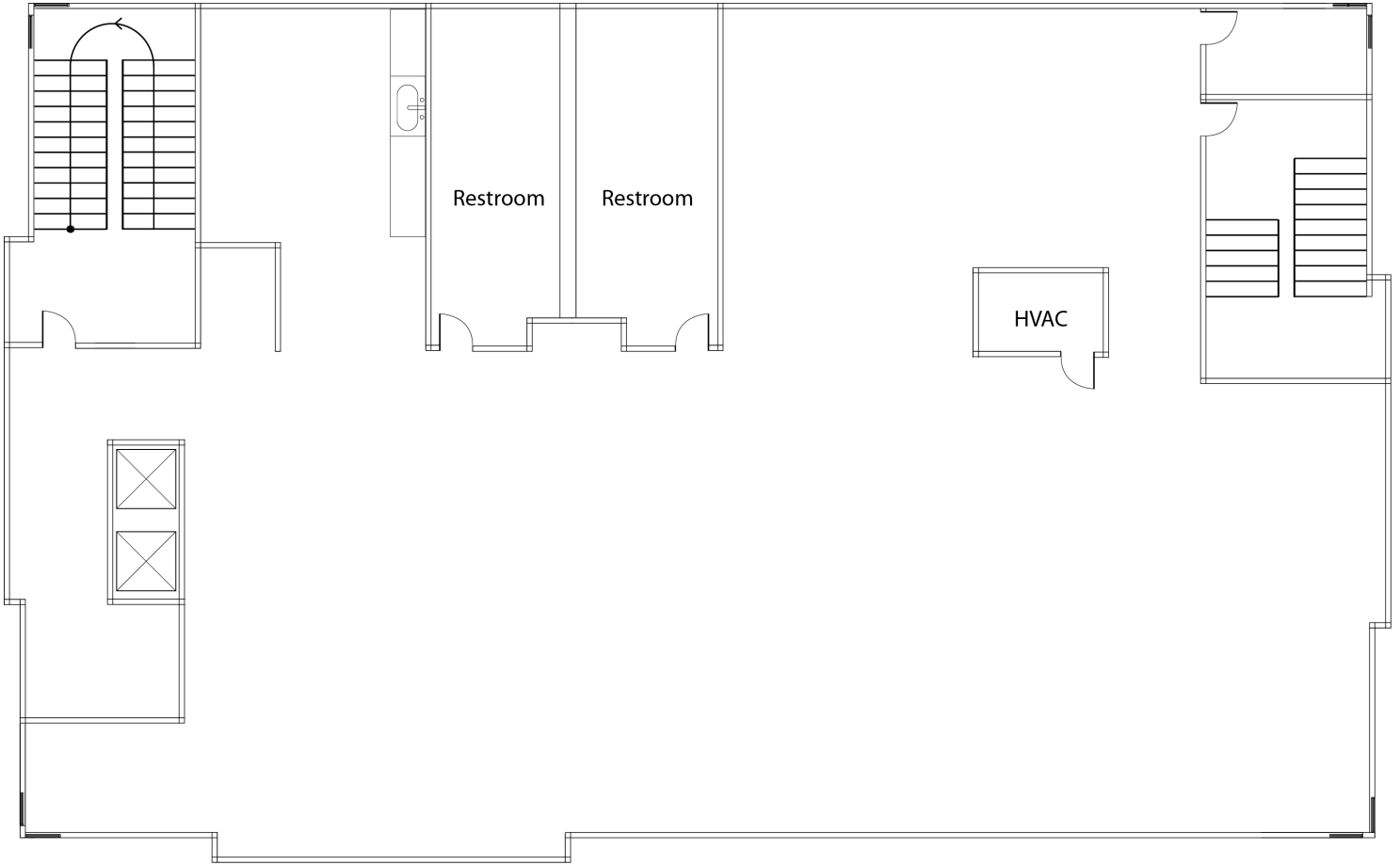


FEATURES

- Suite 200 - 4,000 SF
- Entire 2nd Floor Office
- HVAC 24/7 & Janitorial Included
- Private Restrooms, Open Floor Plan with upgraded finishes, Private Elevator Foyer, Polished Concrete floors
- Parking 4:1,000

Site Plan

The Power Financial Building - Florida City



Suite 200

4,000 SF

Demographics

The Power Financial Building - Florida City



POPULATION	1 MILE	5 MILES	10 MILES
Total population	10,294	98,810	175,560
Median age	27.6	30.3	31.2
Total households	3,346	29,805	50,702
Average HH income	\$30,093	\$49,293	\$53,958



CONTACT

Katie Fernandez-Espinosa
Senior Leasing Associate
305.779.3183
kfernandez@crec.com

CREC
2121 Ponce de Leon Blvd.
Suite 1250
Coral Gables, FL 33134