



ISLAND CREST PLAZA



OFFICE
SPACE
FOR LEASE

ISLAND CREST PLAZA

8015 SE 28TH ST, MERCER ISLAND, WA

ROBERT MESSMER, CCIM
425.458.3902 | 206.948.1577 (c)
rmessmer@rgmcommercial.com

JENNIFER HEYL
425.458.3908
jennifer@rgmcommercial.com

425.452.3052 | rgmcommercial.com

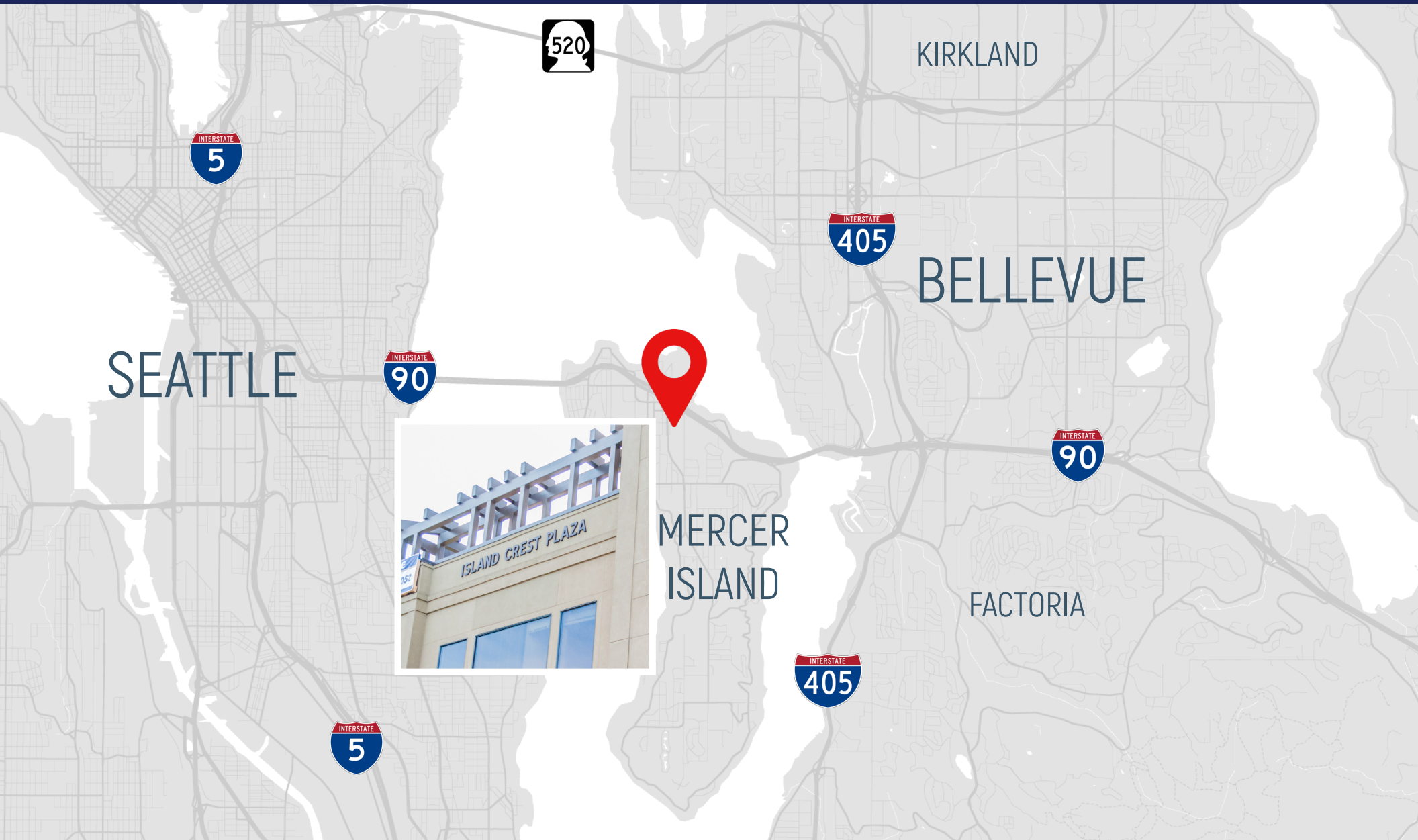
The information contained herein has been received from sources we deem reliable. While we have no reason to doubt its accuracy, we do not guarantee it. You are advised to independently verify all information.



Located in the heart of downtown Mercer Island, just off of I-90 and Island Crest Way, convenient walkway to downtown shops and restaurants

Rental Rates	\$29.00 per SF plus NNN
Estimated NNN (2024)	\$12.84 per SF
Suite 200	2,062 SF
Suite 310	1,015 SF
Suite 312	569 SF - Available 12/1/2024
Stories	3 (2 stories of office over parking garage)
Parking	On-site covered parking of 40 spaces
Year Built	2002
Building Access	Key Card Entry System
HVAC	Efficient HVAC system with computer controlled temperature
Communication	Comcast Business
Construction Class	Reinforced concrete & steel w/exterior stucco





ROBERT MESSMER, CCIM
425.458.3902 | 206.948.1577 (c)
rmessmer@rgmcommercial.com

JENNIFER HEYL
425.458.3908
jennifer@rgmcommercial.com

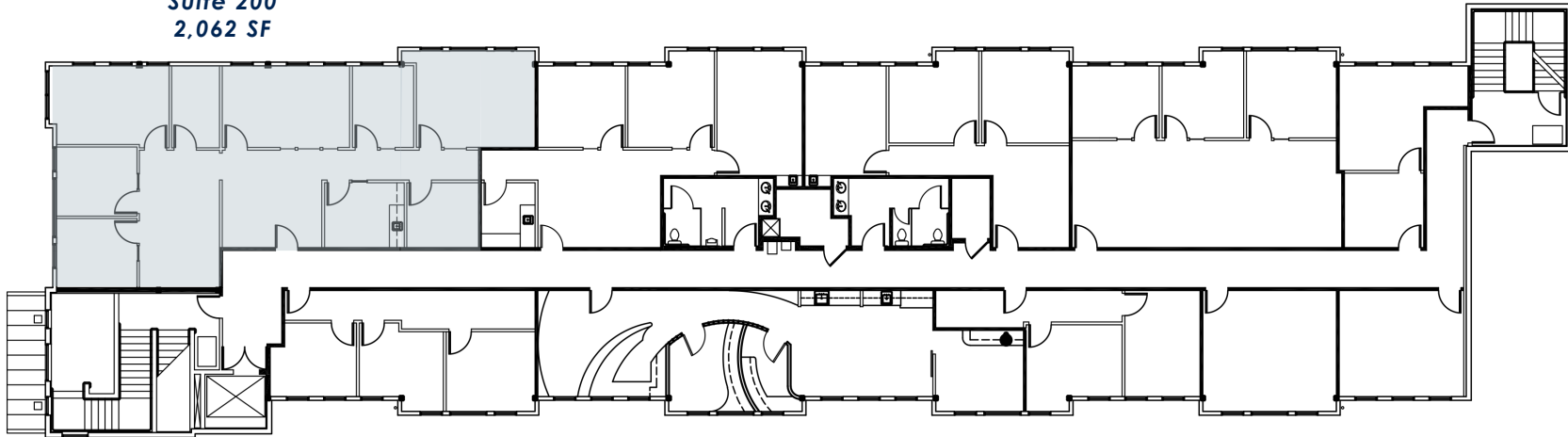
425.452.3052 | rgmcommercial.com

The information contained herein has been received from sources we deem reliable. While we have no reason to doubt its accuracy, we do not guarantee it. You are advised to independently verify all information.



2ND FLOOR

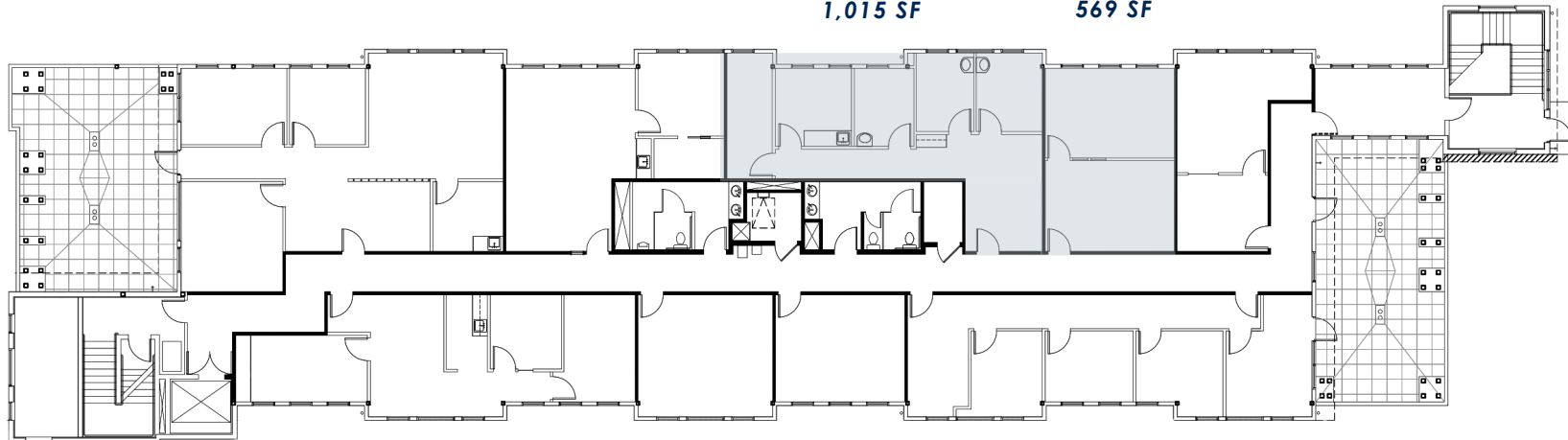
Suite 200
2,062 SF



3RD FLOOR

Suite 310
1,015 SF

Suite 312
569 SF





ROBERT MESSMER, CCIM
425.458.3902 | 206.948.1577 (c)
rmessmer@rgmcommercial.com

JENNIFER HEYL
425.458.3908
jennifer@rgmcommercial.com

425.452.3052 | rgmcommercial.com

The information contained herein has been received from sources we deem reliable. While we have no reason to doubt its accuracy, we do not guarantee it. You are advised to independently verify all information.





ISLAND CREST PLAZA

FINANCIAL

- 1. Key Bank
- 2. Chase Bank
- 3. Bank of America
- 4. Wells Fargo
- 5. US Bank
- 6. Banner Bank

FOOD

- 7. McDonald's
- 8. QFC
- 9. Metropolitan Market
- 10. Starbucks Coffee

FUEL

- 11. Shell
- 12. Chevron

RETAIL

- 13. Wallgreens
- 14. Rite Aid

PUBLIC SERVICES

- 15. US Post Office
- 16. Mercer Island Fire Dept

OFFICE

- 17. Island Corp. Ctr.
- 18. Mercerdale Prof. Ctr.

LIVING

- 19. 77 Central Apartments
- 20. The Mercer Apartment Homes
- 21. Island Square Apartments
- 22. Aviara Apartments
- 23. Hadley Apartments
- 24. Aegis Living

ROBERT MESSMER, CCIM
 425.458.3902 | 206.948.1577 (c)
 rmessmer@rgmcommercial.com

JENNIFER HEYL
 425.458.3908
 jennifer@rgmcommercial.com

425.452.3052 | rgmcommercial.com

The information contained herein has been received from sources we deem reliable. While we have no reason to doubt its accuracy, we do not guarantee it. You are advised to independently verify all information.

