

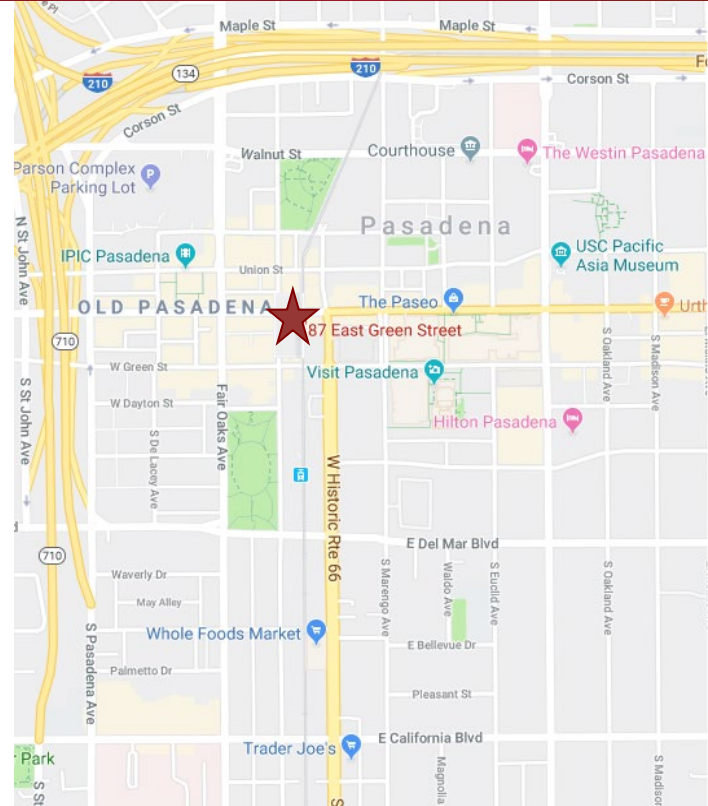
# THE EDISON EL REY BUILDING FOR LEASE



## 87 E. GREEN STREET, PASADENA, CA

FOR LEASE

- AVAILABLE SPACE:** Suite 303 – 1,715 SF  
Suite 304 – 1,507 SF  
Suite 306 – 1,833 SF
- LEASE RATE:** \$2.70/SF, Modified Gross  
Tenant to pay its own utilities, interior janitorial and liability insurance.
- PARKING:** Parking structure across the street. Current rate is \$85.00 per space per month. Free 90 minute visitor parking.
- AMENITIES:**
- \* Restored historic building located in the heart of "Old Town Pasadena".
  - \* Controlled 24/7 building access.
  - \* Elevator served.
  - \* On-site top rated tea & coffee house and restaurant on ground floor (Copa Vida and Dog Haus), and walking distance to numerous restaurants and retail.
  - \* Close walking distance to Del Mar and Holly Street Gold Line Stations.



For more Information, Contact:

Dan Alle

[dalle@redstonecre.com](mailto:dalle@redstonecre.com)

Lic. # No. 01017941

Carole Walker

[cwalker@redstonecre.com](mailto:cwalker@redstonecre.com)

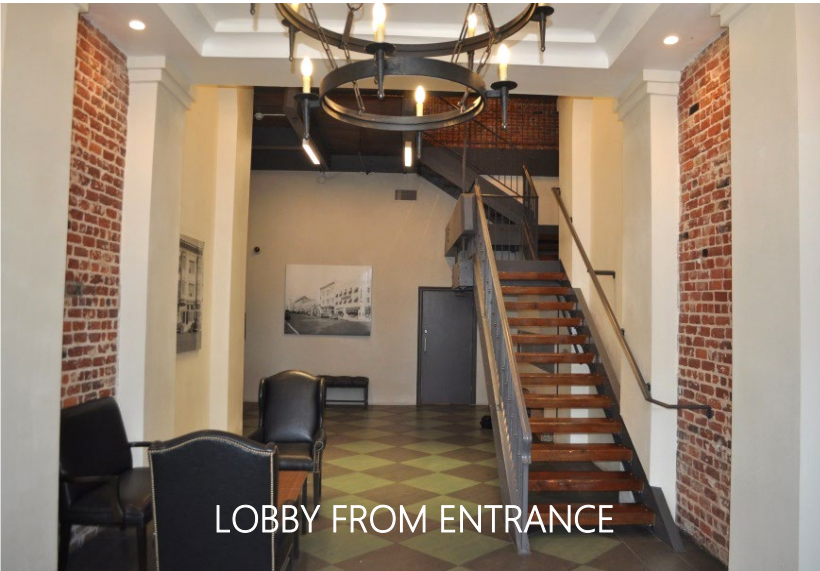
Lic. # No. 01525534

**(626) 795-2255**



All information contained herein is from sources deemed reliable but has not been verified and is submitted without any warranty or representation, expressed or implied, as to its accuracy, and Redstone Commercial Real Estate, License #01525534, assumes no liability for errors or omissions of any kind, change of price, rental or other conditions, including, without limitation, prior sale, lease or financing or withdrawal without notice. This presentation is for information only and under no circumstances whatsoever is to be deemed a contract, note, memorandum or any other form of binding commitment.

# 87 E. GREEN STREET



LOBBY FROM ENTRANCE



ANGLE OF LOBBY FROM SECOND FLOOR



THIRD FLOOR LOBBY AND CORRIDOR



THIRD FLOOR CORRIDOR

# 87 E. GREEN STREET

## INTERIOR SUITE PHOTOS

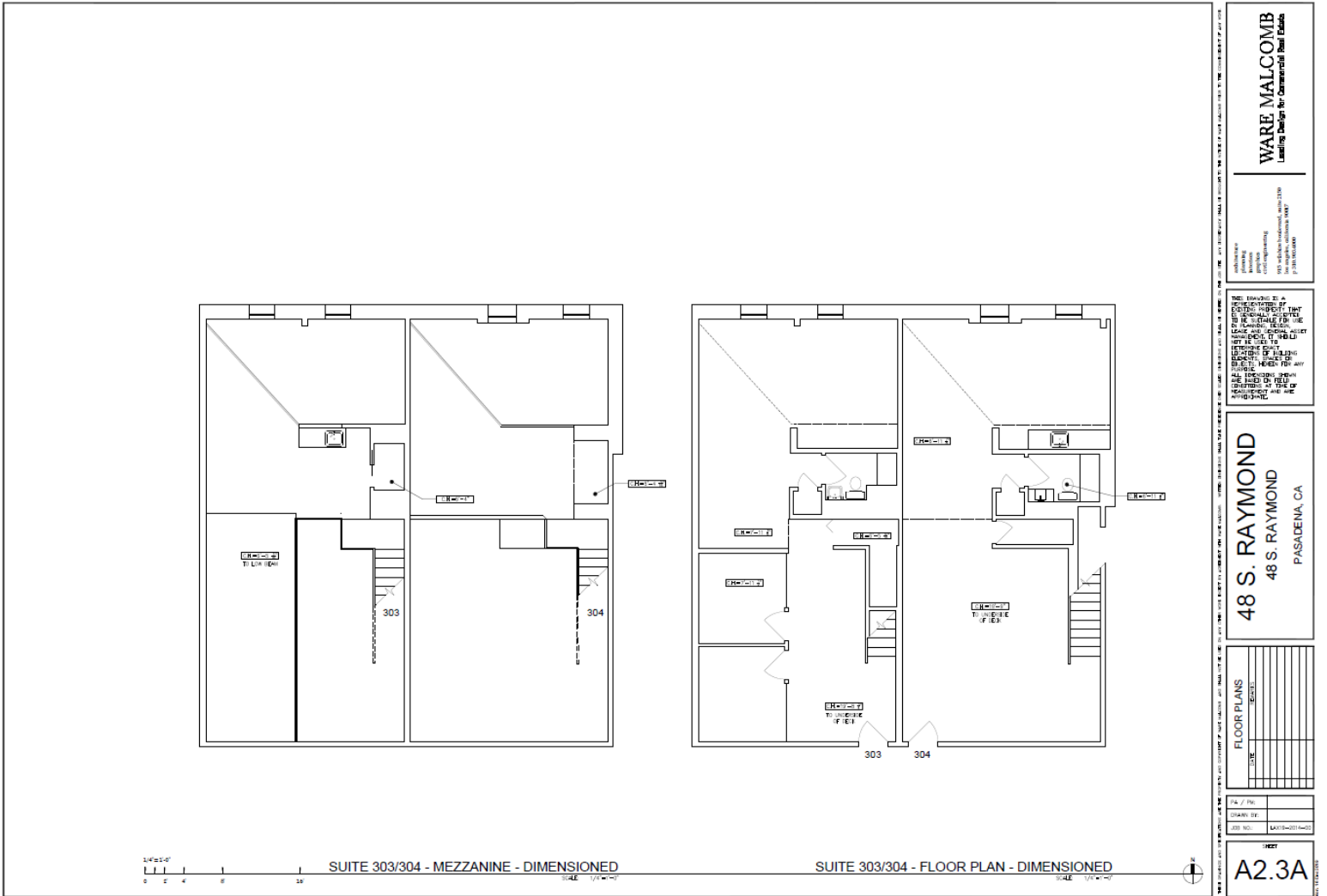


# Suite 303



All information contained herein is from sources deemed reliable but has not been verified and is submitted without any warranty or representation, expressed or implied, as to its accuracy, and Redstone Commercial Real Estate, License #01525534, assumes no liability for errors or omissions of any kind, change of price, rental or other conditions, including, without limitation, prior sale, lease or financing or withdrawal without notice. This presentation is for information only and under no circumstances whatsoever is to be deemed a contract, note, memorandum or any other form of binding commitment.

# Suites 303 & 304



**WARE MALCOMB**  
Leading Design for Commercial Real Estate

Architect  
Planning  
Interior Design  
300 S. Raymond  
Pasadena, CA 91107  
P: 626.795.0000

WE HEREBY CERTIFY THAT THE INFORMATION CONTAINED HEREIN IS TRUE AND CORRECT TO THE BEST OF OUR KNOWLEDGE AND BELIEF. WE DO NOT WARRANT THE ACCURACY OF THE INFORMATION CONTAINED HEREIN. THE INFORMATION CONTAINED HEREIN IS FOR INFORMATIONAL PURPOSES ONLY AND DOES NOT CONSTITUTE AN OFFER OF ANY FINANCIAL PRODUCT OR SERVICE. ALL INFORMATION IS SUBJECT TO CHANGE WITHOUT NOTICE.

**48 S. RAYMOND**  
48 S. RAYMOND  
PASADENA, CA

FLOOR PLANS  
SECRET

PL / PG:  
DRAWN BY:  
REV NO.: LAM110211-002

**A2.3A**

All information contained herein is from sources deemed reliable but has not been verified and is submitted without any warranty or representation, expressed or implied, as to its accuracy, and Redstone Commercial Real Estate, License #01525534, assumes no liability for errors or omissions of any kind, change of price, rental or other conditions, including, without limitation, prior sale, lease or financing or withdrawal without notice. This presentation is for information only and under no circumstances whatsoever is to be deemed a contract, note, memorandum or any other form of binding commitment.