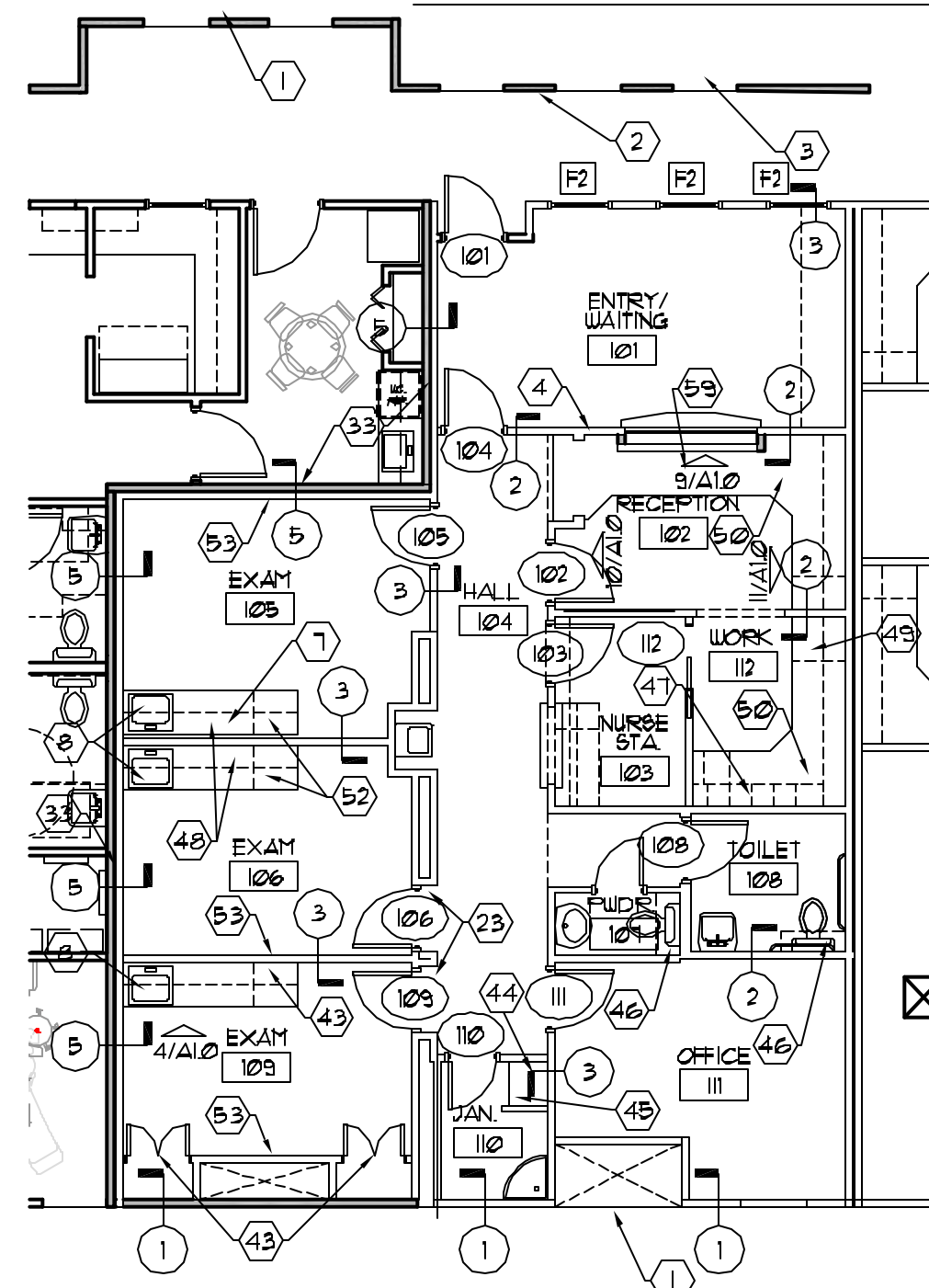
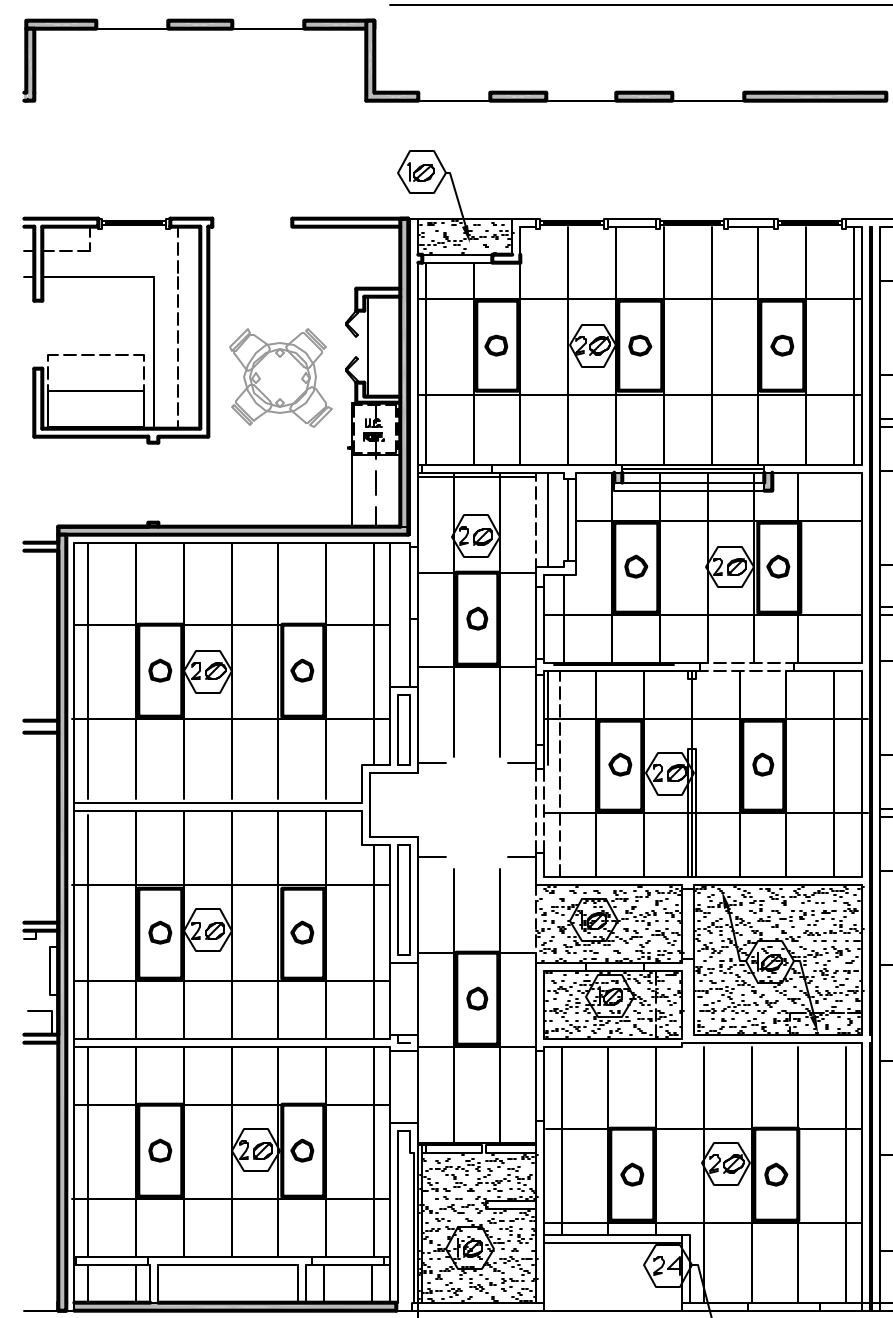


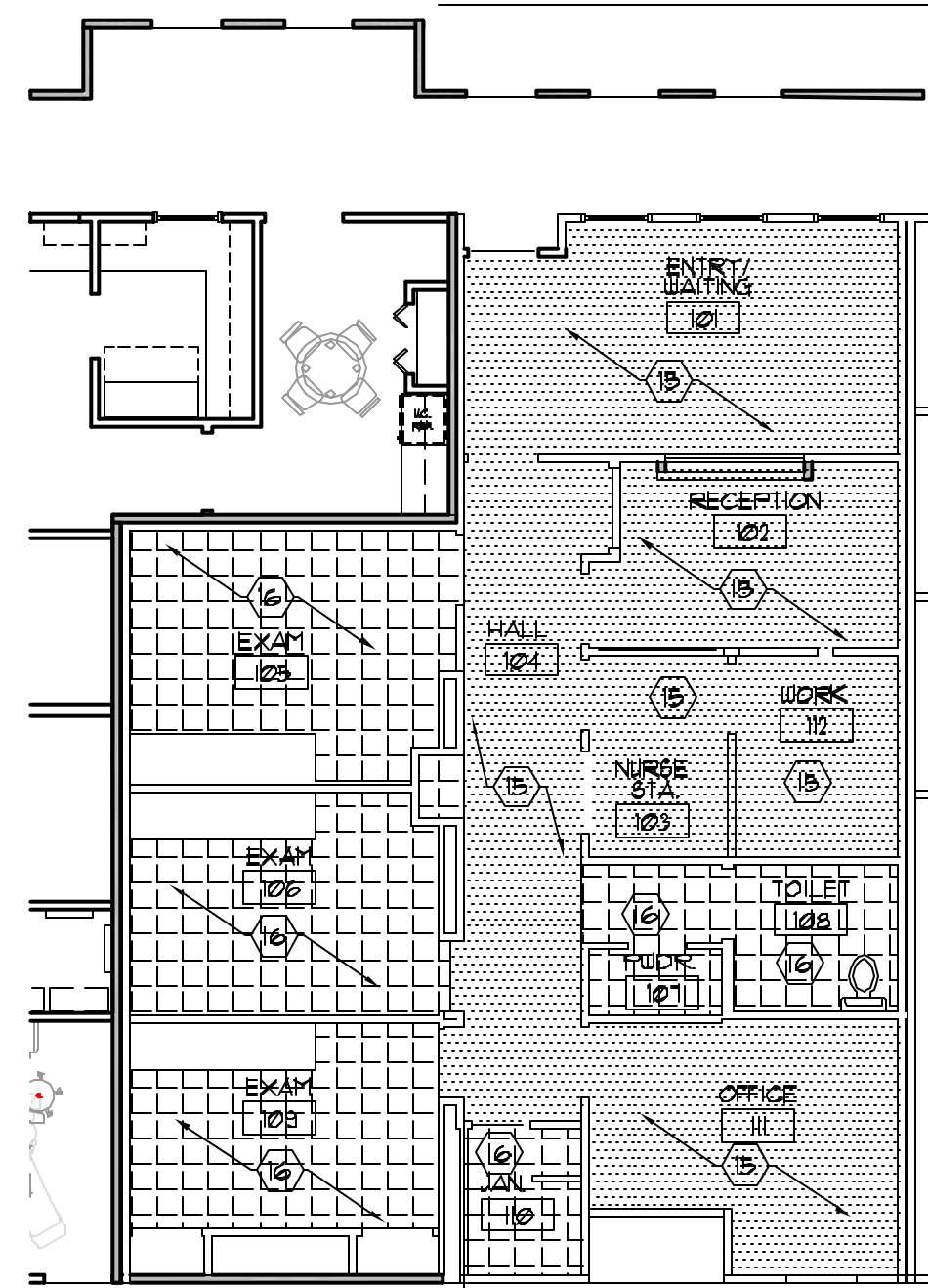
**DIMENSIONED FLOOR PLAN**  
TOTAL SF. 1402  
SCALE: 1/8" = 1'-0"



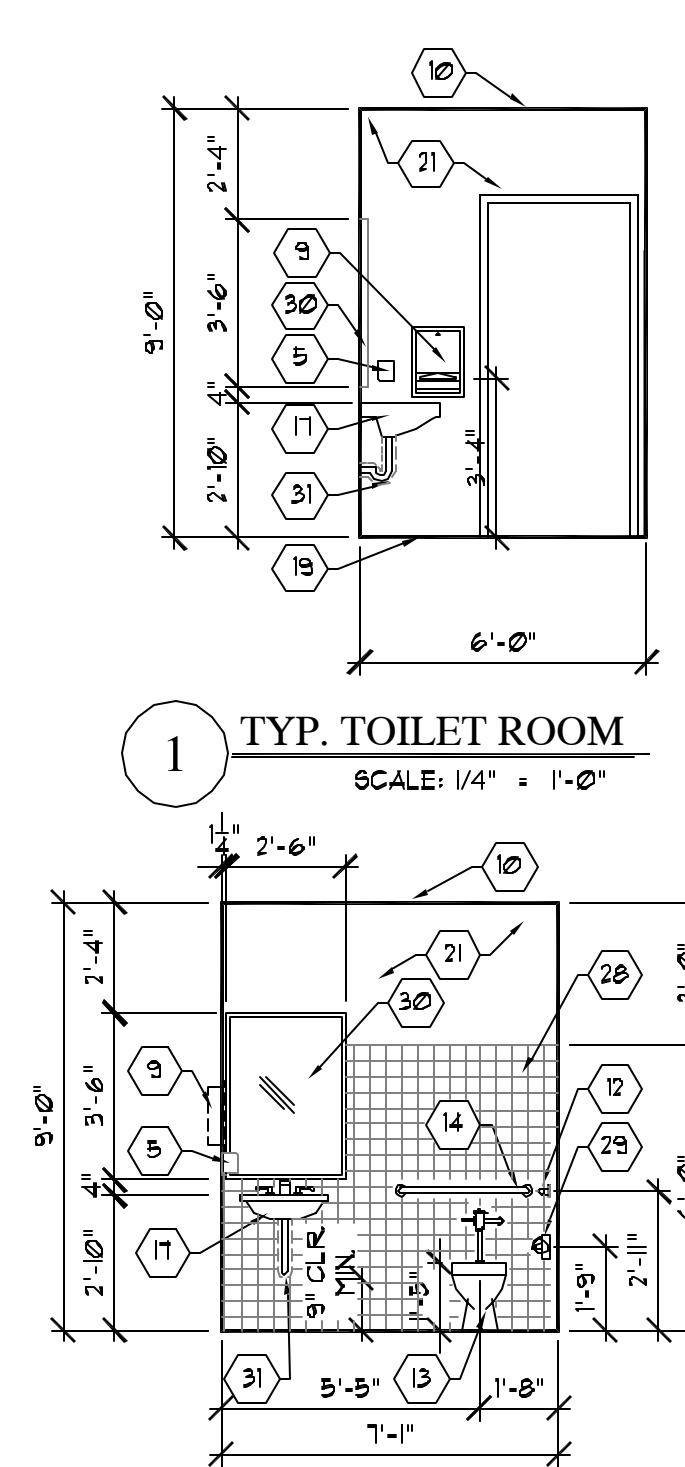
**FLOOR PLAN**  
TOTAL SF. 1402  
SCALE: 1/8" = 1'-0"



**REFLECTED CEILING**  
SCALE: 1/8" = 1'-0"

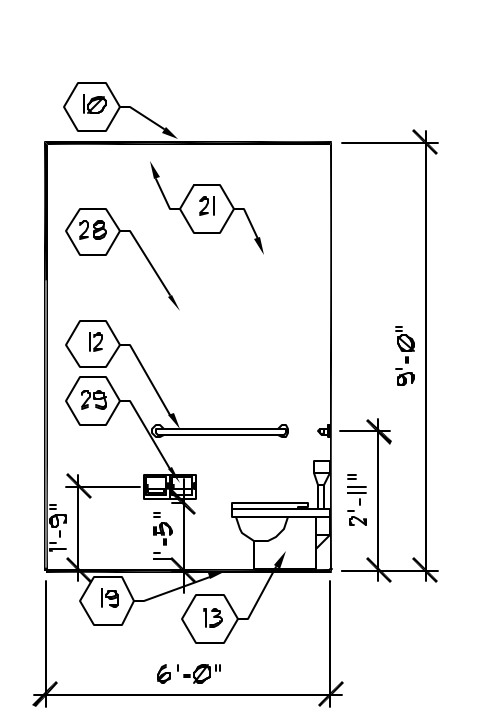


**FLOOR FINISH PLAN**  
SCALE: 1/8" = 1'-0"

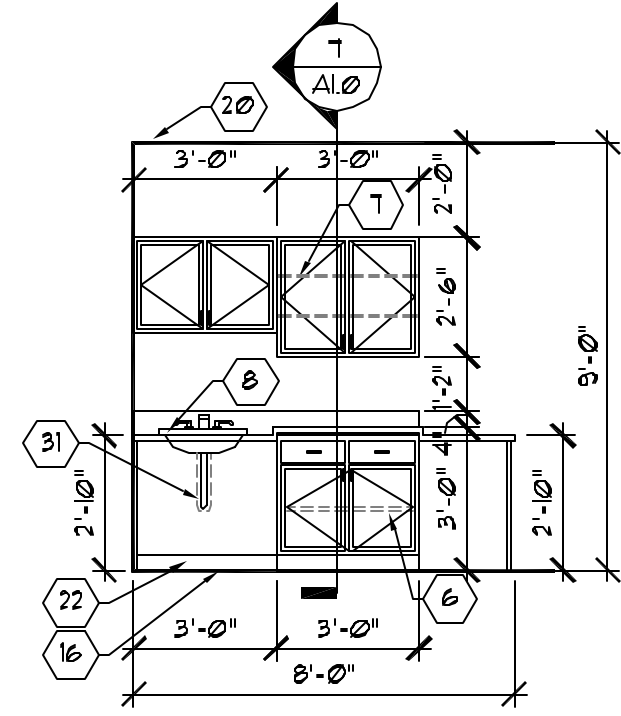


**1 TYP. TOILET ROOM**  
SCALE: 1/4" = 1'-0"

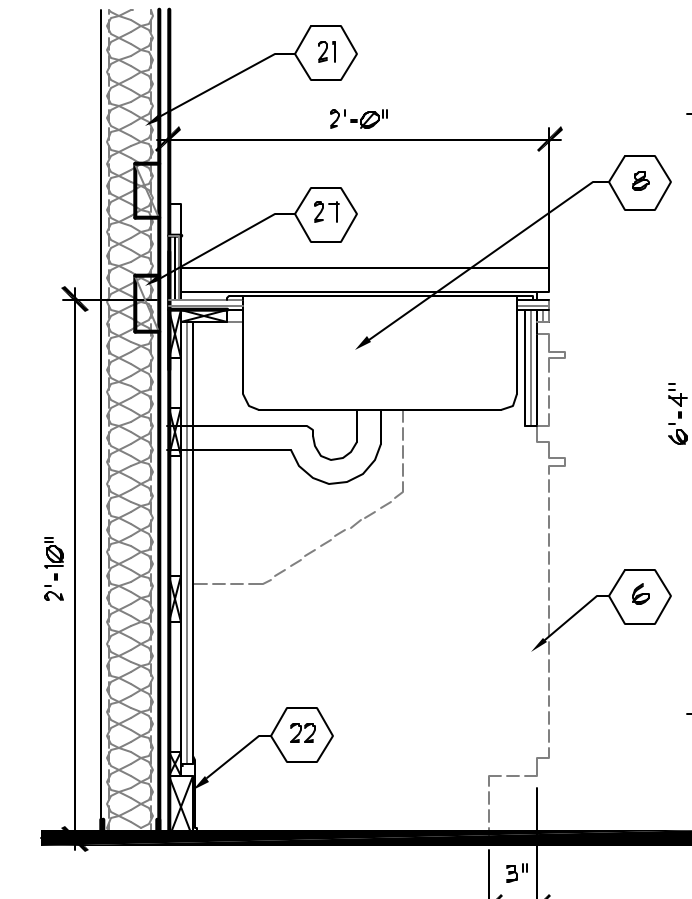
**2 TYP. TOILET ROOM**  
SCALE: 1/4" = 1'-0"



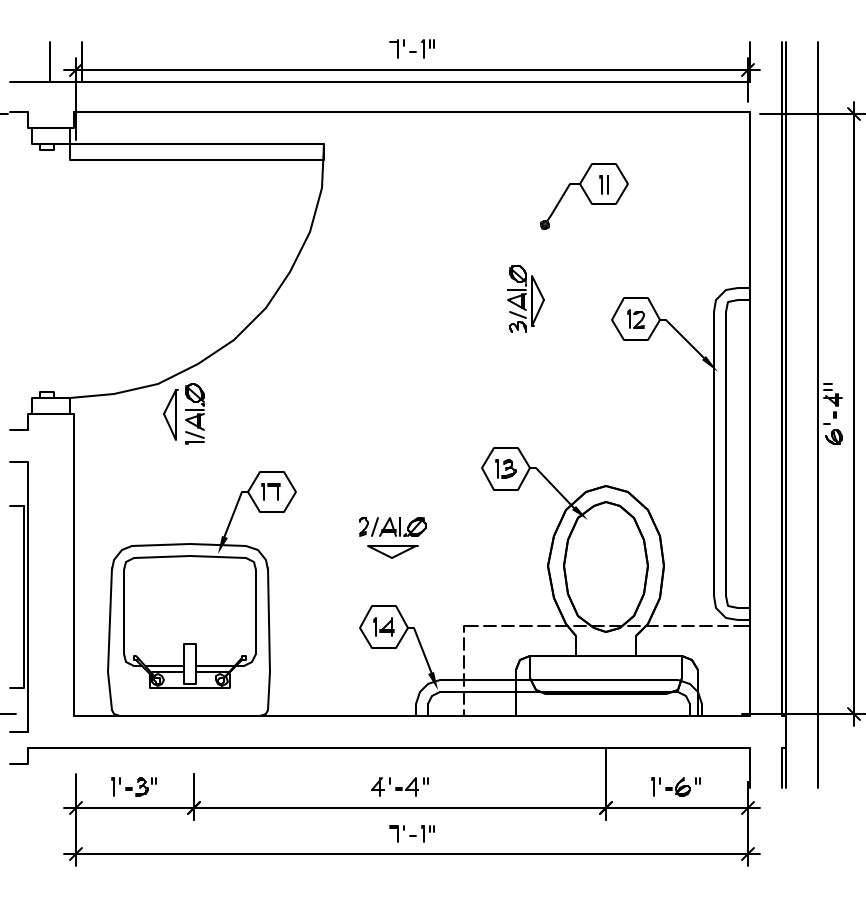
**3 TYP. TOILET ROOM**  
SCALE: 1/4" = 1'-0"



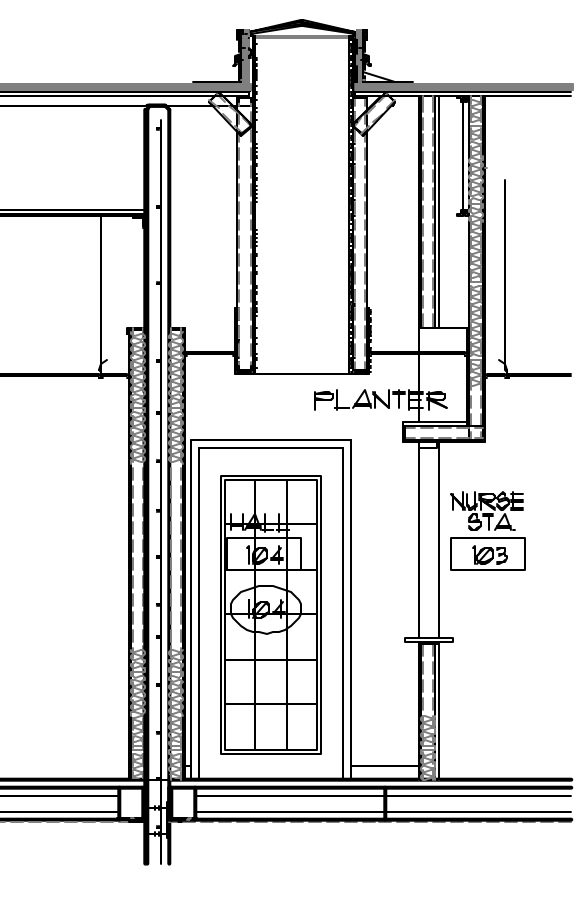
**4 TYP. EXAM ROOM**  
SCALE: 1/4" = 1'-0"



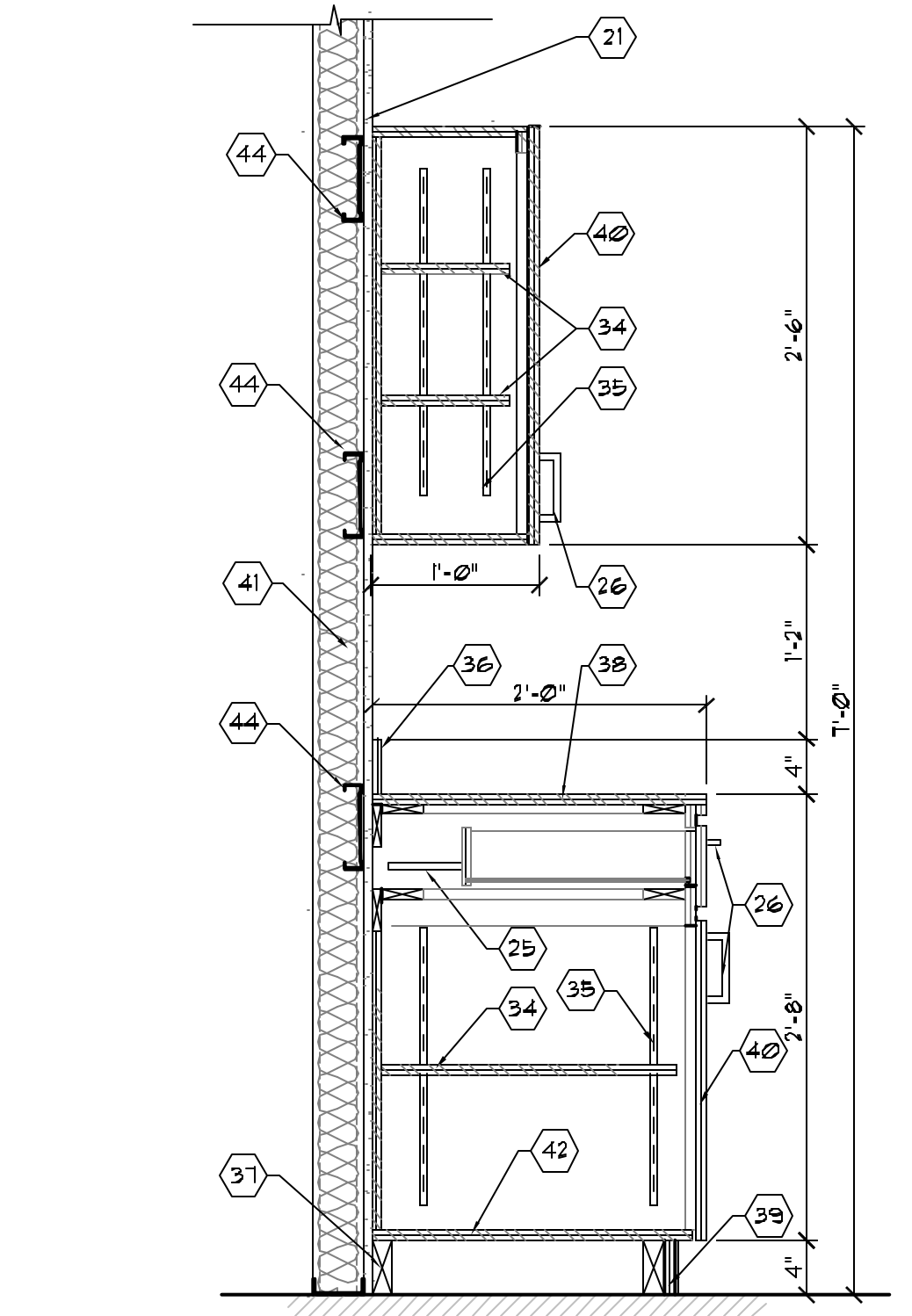
**5 SINK AT EXAM ROOMS**  
SCALE: 1" = 1'-0"



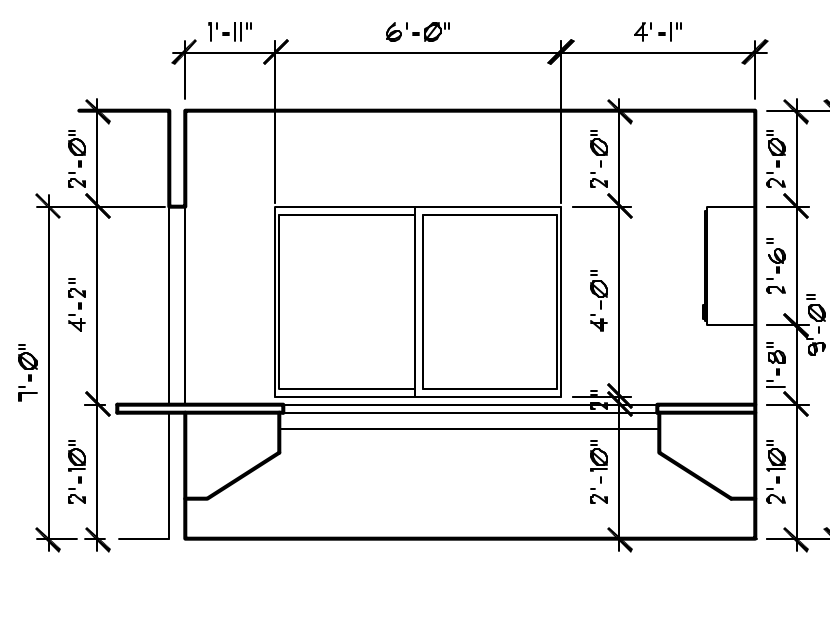
**6 ENLARGED TOILET PLAN**  
SCALE: 1/2" = 1'-0"



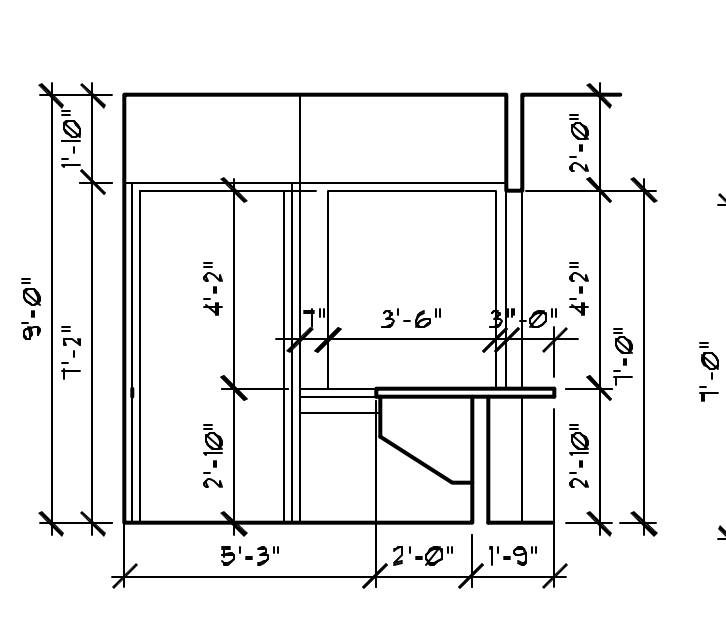
**7 SKYLIGHT SECTION**  
SCALE: 1/4" = 1'-0"



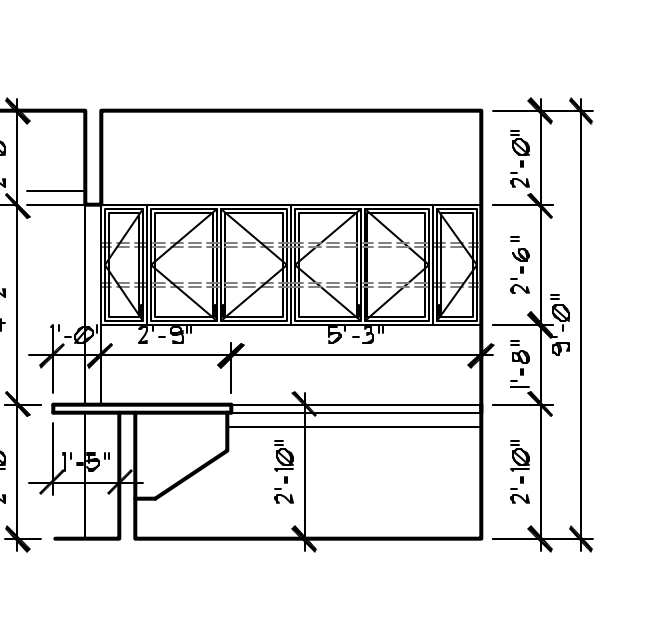
**8 CASEWORK SECTION**  
SCALE: 1" = 1'-0"



**9 RECEPTION ELEVATION**  
SCALE: 1/4" = 1'-0"



**10 RECEPTION ELEVATION**  
SCALE: 1/4" = 1'-0"



**11 RECEPTION ELEVATION**  
SCALE: 1/4" = 1'-0"

ROOM FINISH SCHEDULE										
RM. NO.	ROOM NAME	FLOOR	BASE	WALLS			CEILING	CEILING HEIGHT	REMARKS	
				N	E	W				
101	ENTRY/WAITING	2	3	6	6	6	6	4	9'-0"	-
102	RECEPTION	2	3	6	6	6	6	4	9'-0"	-
103	WORK ROOM	2	3	6	6	6	6	4	9'-0"	-
104	HALLWAY	2	3	6	6	6	6	4	9'-6"	-
105	EXAM	1	3	6	6	6	6	4	9'-0"	-
106	EXAM	1	3	6	6	6	6	4	9'-0"	-
107	POUNDER	1	5	5	5	5	6	6	8'-0"	A
108	TOILET	1	5	5	5	5	6	6	8'-0"	A
109	EXAM	1	3	6	6	6	6	4	9'-0"	-
110	JANITORS	1	3	6	6	6	6	6	8'-0"	-
111	OFFICE	2	3	6	6	6	6	4	9'-0"	-

**FINISH SCHEDULE NOTES:**  
 1. 12"x12" VCT - AS SELECTED BY OWNER  
 2. CARPET - AS SELECTED BY OWNER  
 3. 4" VINYL COVE BASE  
 4. LAY-IN ACOUSTICAL CEILING - SEE CEILING PLAN  
 5. CERAMIC TILE - AS SELECTED BY OWNER  
 6. 5/8" GYP. BD. T. B. 4 T. PAINTED, COLOR SELECTED BY OWNER

DOOR SCHEDULE									
NO.	TYPE	SIZE	DOOR		FRAME		HOUR	R.M.K.S.	
			MAT.	THK.	MAT.	THK.			
101	D1	30710	WOOD	1 3/4"	FI	HM	5 3/4"	L6	B,C
102	D3	30710	WOOD	1 3/4"	FI	HM	5 3/4"	L6	B,C
103	D1	30710	WOOD	1 3/4"	FI	HM	5 3/4"	L6	B,C
105	D2	30710	WOOD	1 3/4"	FI	HM	5 3/4"	PASS	-
106	D2	30710	WOOD	1 3/4"	FI	HM	5 3/4"	PRIV	-
107	D2	30710	WOOD	1 3/4"	FI	HM	5 3/4"	PRIV	-
108	D2	30710	WOOD	1 3/4"	FI	HM	5 3/4"	PASS	-
109	D2	30710	WOOD	1 3/4"	FI	HM	5 3/4"	PASS	-
110	D2	30710	WOOD	1 3/4"	FI	HM	5 3/4"	L6	A,B,C
111	D3	30710	WOOD	1 3/4"	FI	HM	5 3/4"	L6	C
112	-	30710 P.K.T.	B.C. WOOD	1 3/4"	LD	LD	5 3/4"	PRIV	-

**REMARKS:**  
 A. 20 MIN FIRE RATING -  
 B. LOCKSET 1AA (PROVIDE 2 KEYS PER LOCK)  
 C. LOCKSET 2AA (PROVIDE 2 SETS)  
 L6-LOCK SET LEVER  
 PASS- PASSAGE LEVER  
 PRIV- PRIVACY LEVER

DOOR & FRAME TYPES					
8 C WOOD W/ 50 PATTERN 1/4" WIRE GLASS	8 C WOOD DOOR	8 C WOOD DOOR	HOLLOW METAL		

- KEYED NOTES**
- EXISTING EXTERIOR TILT-UP CONC. PANELS.
  - 3 5/8" MTL. STUD FURRING - W/ R-19 KRAFT FACED BATT INSULATION. 2" SPACE BETWEEN STUDS 4 EXIST CONC. WALL. SEE WALL TYPE SCHEDULE.
  - EXISTING WINDOWS & GLAZING.
  - NEW 3 5/8" METAL STUD WALL W/ 5/8" GYP. BD. EXTEND WALL TO BOTTOM OF STEEL DECK. - SEE WALL TYPE SCHEDULE.
  - SOAP DISPENSER BY OWNER.
  - BASE CABINET - SEE DETAIL 46 & 47 THIS SHEET.
  - UPPER CABINETS - SEE DETAIL 46 & 47 THIS SHEET.
  - SINGLE BASIN SINK - SEE PLUMBING PLAN.
  - PAPER TOWEL DISPENSER.
  - GYP. BD. CEILING - PAINTED. SEE ROOM FINISH SCHEDULE.
  - 5'-0" x 4" CLEAR TURNING SPACE.
  - STAINLESS STEEL SIDE GRAB BAR - 42" LONG. PROVIDE BLOCKING WITHIN WALL FOR MOUNTING.
  - ADA ACCESSIBLE WATER CLOSET - SEE PLUMBING PLAN.
  - STAINLESS STEEL REAR GRAB BAR - 36" LONG. PROVIDE BLOCKING WITHIN WALL FOR MOUNTING.
  - CARPET FLOORING - SEE FINISH SCHEDULE.
  - VCT FLOORING - SEE FINISH SCHEDULE.
  - WALL MOUNTED LAVATORY - SEE PLUMBING PLAN.
  - WALL MOUNTED BATHROOM SIGN - SEE SHEET 401.
  - CERAMIC FLOOR TILE - SEE FINISH SCHEDULE.
  - SUSPENDED ACOUSTICAL CEILING - SEE R.C.P.
  - 5/8" DRYWALL OVER 3 5/8" STUD FRAMING @ 16" O.C.
  - WALL BASE - SEE ROOM FINISH SCHEDULE.
  - SAW CUT FOR NEW OPENING - OPENING OVERALL HEIGHT TO BE 10'-0" APX.
  - NEW 2'x4' SKYLIGHT INSTALL PER MANU. SPECIFICATIONS
  - DRAWER TRACK SEE SPECS.
  - DRAWER 4 DOOR FULLS - SEE SPECS.
  - PROVIDE BLOCKING WITHIN WALL FOR MOUNTING.
  - WALL TILE - SEE FINISH SCHEDULE.
  - TOILET PAPER DISPENSER BY OWNER.
  - MIRROR 42" H x 30" W WALL MOUNTED MIRROR W/ 40" MAX TOILET FRAME. 40" MAX TO BOTTOM OF GLASS.
  - INSULATE TRAPS AND WATER LINES W/ FIBERGLASS INSULATION COVERED INSULATION.
  - 30" x 40" CLEAR FLOOR AREA IN FRONT OF FIXTURE
  - NEW TENANT SEPARATION WALL. SEE WALL TYPE SCHEDULE (TYPE 5).
  - ADJUSTABLE SHELVES - 3/4" PARTICLE BOARD W/ PLASTIC LAMINATE FINISH. LAMINATE SELECTED BY OWNER.
  - RECESSED METAL SHELF STANDARDS.
  - BACK SPLASH - 3/4" PARTICLE BOARD W/ PLASTIC LAMINATE FINISH. LAMINATE SELECTED BY OWNER.
  - 2x4 LEDGER.
  - CABINET TOP 4 SIDES - 3/4" PARTICLE BOARD W/ PLASTIC LAMINATE FINISH. LAMINATE SELECTED BY OWNER.
  - PARTICLE BOARD KICK PLATE W/ WALL BASE AS SCHEDULED. SEE SHEET 450.
  - 3/4" PARTICLE BOARD W/ PLASTIC LAMINATE FINISH AS SELECTED BY OWNER.
  - METAL STUDS @ 16" o.c. - SEE FLOOR PLANS, STRUCT. 4 SPECS.
  - CABINET BOTTOM - PARTICLE BOARD W/ PLASTIC LAMINATE FINISH. LAMINATE SELECTED BY OWNER.

PROVIDED AND INSTALLED BY CONTRACTOR AND PAID FOR BY TENANT

- STORAGE CLOSETS WITH DOOR
- MEDICINE CABINET WITH LOCK
- MEDICINE REFRIGERATOR
- CABINET AT TOILET ROOM
- FILE STORAGE SHELVING.
- UPPER CABINETS.
- DRAWER LATERAL FILE.
- KEYBOARD DRAWERS.
- DATA AND PHONE WIRING.
- BUILT IN WRITING DESK

WALL TYPE SCHEDULE	
	<b>TYPE 1: TILT-UP / FRAME WALL</b> EXISTING 6" TILT-UP CONC. PANELS W/ 3 5/8" MTL. STUDS @ 16" o.c. 2" AWAY FROM CONC. WALL. CARRY TO BOTTOM OF STEEL TRUSS. R-19 KRAFT FACED BATT INSULATION 4 3/8" DRYWALL.
	<b>TYPE 2: INTERIOR METAL FRAME WALL</b> 3 5/8" METAL STUDS @ 16" o.c. W/ 5/8" GYPSUM BOARD BOTH SIDES. EXTEND PARTITION TO 6" ABOVE CEILING.
	<b>TYPE 3: INTERIOR 1 HOUR METAL FRAME SOUND WALL</b> 3 5/8" METAL STUDS @ 16" o.c. W/ 3 1/2" FIBERGLASS SOUND BATT. 5/8" GYPSUM BOARD (TYPE X) BOTH SIDES. EXTEND PARTITION TO BOTTOM OF ROOF.
	<b>TYPE 4: INTERIOR LOW WALL (NOT USED)</b> 3 5/8" METAL STUDS @ 16" o.c. W/ 5/8" GYPSUM BOARD BOTH SIDES. 5'-0" HIGH WALL W/ WOOD CAP AND TRIM.
	<b>TYPE 5: TENANT SEPARATION WALL</b> DOUBLE ROW OF 3 5/8" METAL STUDS @ 16" o.c. W/ 5/8" TYPE "X" GYP. BD. BOTH SIDES 4 R-19 KRAFT FACED BATT INSULATION. 2 STUDS 4 GYP. BD. TO EXTEND TO BOTTOM OF ROOF DECK FOR 1-HOUR TENANT SEPARATION UL ASSEMBLY NUMBER U43.

CEILING LEGEND			
	2x4 FLORESCENT SURFACE MOUNTED LIGHTING		GYP. BOARD - PAINTED
	EXHAUST FAN		SUPPLY AIR REGISTER
	3x4 ACOUSTICAL CEILING TILES AND HANGING GRID SYSTEM		RETURN AIR REGISTER
	9'-6" CEILING OR OFFSET HEIGHT		SKYLIGHT

**NOTES:**  
 1. ALL CEILING HEIGHTS ARE RELATIVE TO FINISH FLOOR LEVEL OF 0'-0" AT ME&A ENGINEERING SUITE ONLY.  
 2. COORDINATE WITH MECHANICAL AND ELECTRICAL FOR ADDITIONAL REQUIREMENTS.