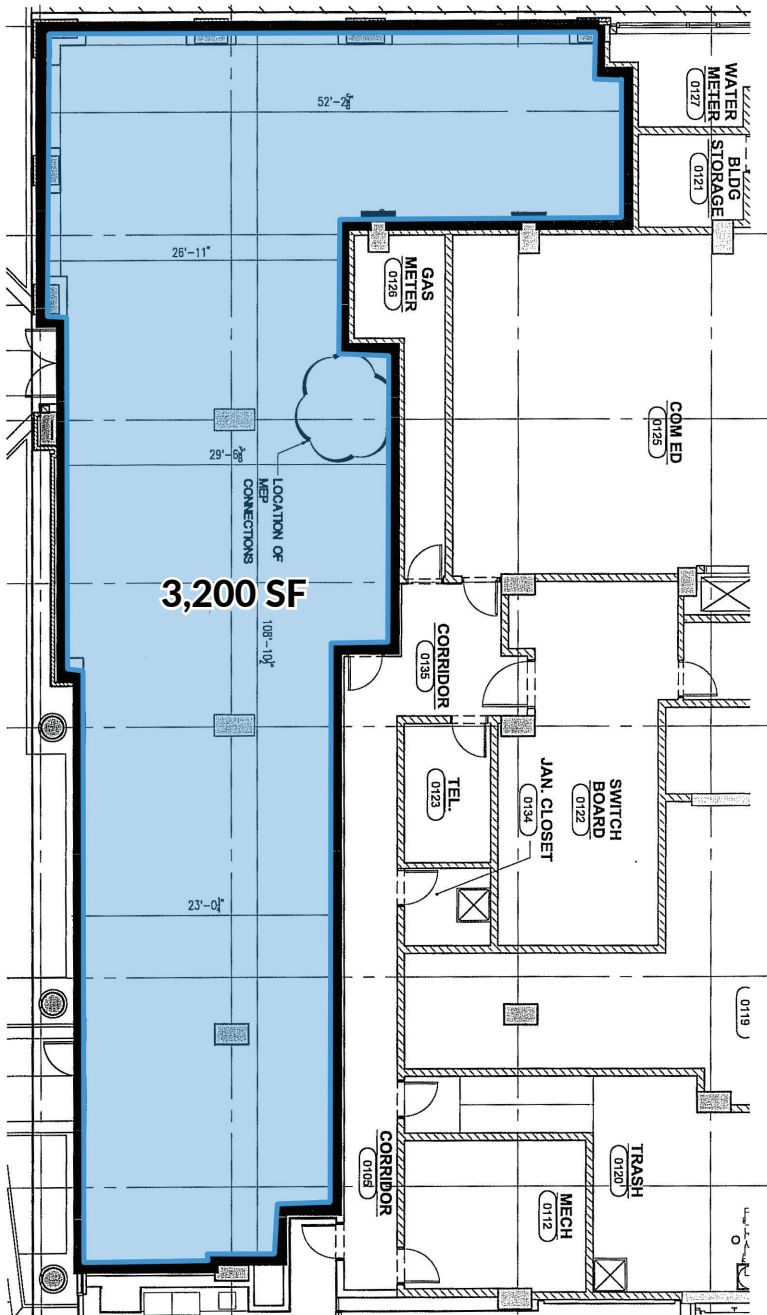


530
S O U T H
S T A T E

SOUTH LOOP
CHICAGO, IL

RETAIL SPACE AVAILABLE

SOUTH LOOP RETAIL SPACE AVAILABLE
530 S. STATE
 Northwest Corner of State & Harrison | Chicago, IL



SPACE AVAILABLE

3,200 SF Corner

SITE SUMMARY

- 100 FT of State Street frontage
- Ground floor corner of 184-unit condo building, adjacent to CVS
- Located across from University Center of Chicago, home to 1,700 area college students from DePaul University, Roosevelt University, and Columbia College
- Over 30,000 students within blocks of site

CO-TENANCY

Join CVS and area tenants including Panera Bread, Blaze Pizza, Panda Express, and 7-Eleven.

WALKING SCORE 98

TRANSIT SCORE 100

POPULATION DENSITY

18,301	1/2 Mile
52,537	1 Mile
182,545	2 Mile

DAYTIME EMPLOYMENT

77,555	1/2 Mile
271,990	1 Mile
418,840	2 Mile

AVERAGE HH INCOME

\$117,160	1/2 Mile
\$122,685	1 Mile
\$117,975	2 Mile

SOUTH LOOP RETAIL SPACE AVAILABLE

530 S. STATE

Northwest Corner of State & Harrison | Chicago, IL



CONTACT

Matt Cavanagh
 matt@arcgrp.com
 (630) 908-5694

Cooper Annenberg
 cooper@arcgrp.com
 (630) 908-5697

© 2019 A+R+C Real Estate. All information is from sources believed reliable, not independently verified, and thus subject to errors, omissions, and modifications such as price, listing, square footage, rates and commissions. All information, estimates and projections subject to change, market assumptions, unknown facts and conditions, and future potentialities. A+R+C Real Estate makes no express or implied representations or warranties, as facts and results may vary materially from all information, estimates and projections. All renderings presented are conceptual.

