

# Seagull Office

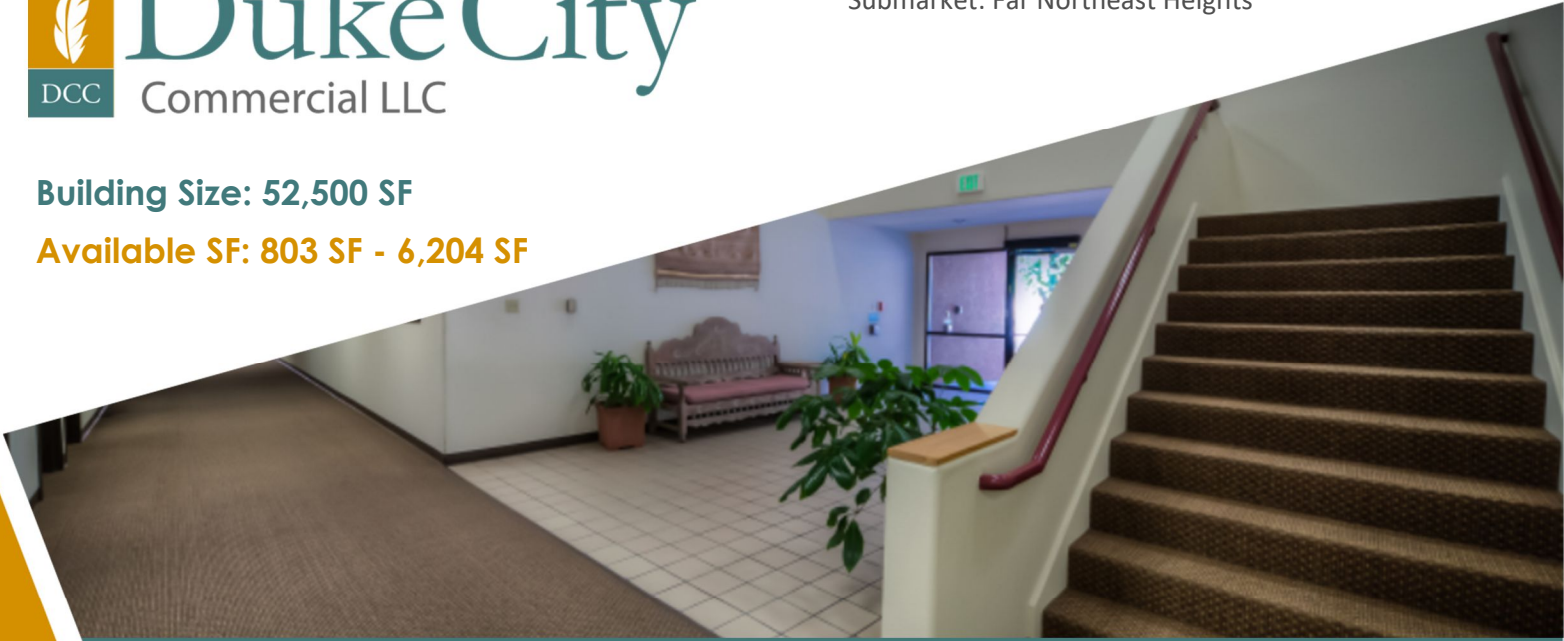
6100 Seagull Street NE / 5801 Osuna Rd. NE

Albuquerque, NM 87109



**Building Size: 52,500 SF**

**Available SF: 803 SF - 6,204 SF**



## Overview

Well located office complex in a pocket of the San Mateo/Academy corridor. Plenty of amenities nearby and easy access to I-25.

## Highlights

- ◆ Close to restaurants, shops and other amenities
- ◆ Easy access to I-25
- ◆ Good on-site parking
- ◆ Well maintained by local management

## Office Space For Lease

### Joe Farr, CCIM

Qualifying Broker

(505) 246-9800

[jfarr@dukecityllc.com](mailto:jfarr@dukecityllc.com)

NM License #19522

*Your trusted  
commercial real estate  
adviser!*

**\$15.00 psf/year full service**

*A great value for Far North I-25 submarket!*

## Office Space For Lease

# Seagull Office

**Joe Farr, CCIM**

Qualifying Broker

(505) 246-9800

jfarr@dukecityllc.com

NM License #19522

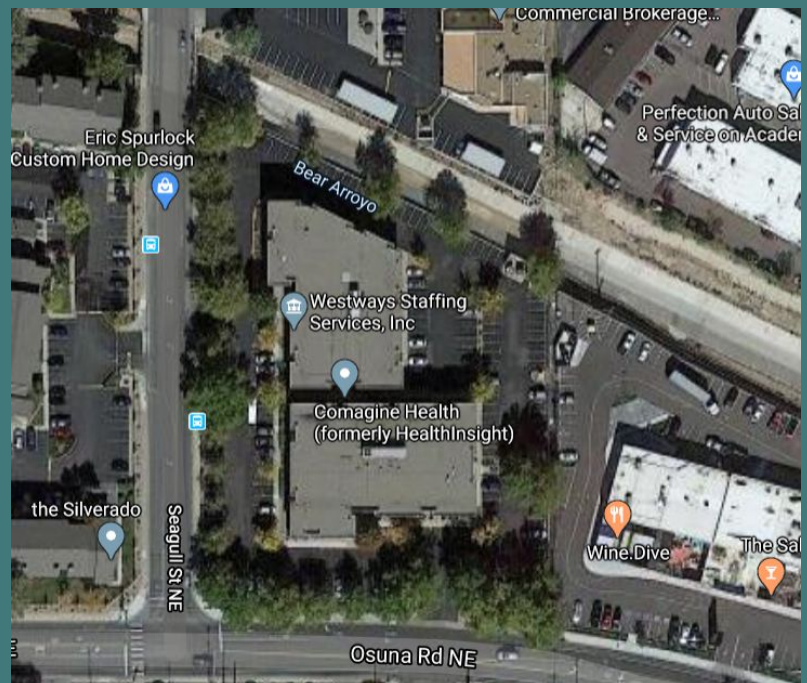
*Your trusted  
commercial real estate  
adviser!*

## Full Service Rates & Details

Suite	Size	Max. Div.	Rate
A-102	3,722 SF	3,722 SF	\$15.00 PSF
A-105	2,105 SF	2,105 SF	\$15.38 PSF
A-110	883 SF	883 SF	\$15.00 PSF
B-103	1,381 SF	1,381 SF	\$15.00 PSF
B-200	1,334 SF	6,204 SF	\$15.00 PSF
B-201	1,671 SF	6,204 SF	\$15.00 PSF
B-202	1,629 SF	6,204 SF	\$15.00 PSF
B-203	1,570 SF	6,204 SF	\$15.00 PSF



## Map Location





# Seagull Office

## Office Space For Lease



Property Owned By

**GEMINI  
ROSEMONT**  
COMMERCIAL REAL ESTATE®

5801 Osuna Rd. NE

Suite A-102 +/-3,722 RSF

Suite A-105 +/-2,105 RSF

Suite A-110 +/-883 RSF

A-105 sublease (expires 7/31/24)



SEAGULL PLAZA, BLDG. A



**Joe Farr, CCIM**

Qualifying Broker  
(505) 246-9800

*The information presented here is deemed to be accurate, however it has not been independently verified. We make no guarantee, warranty or representation. It is your responsibility to confirm accuracy and completeness.*

# Seagull Office

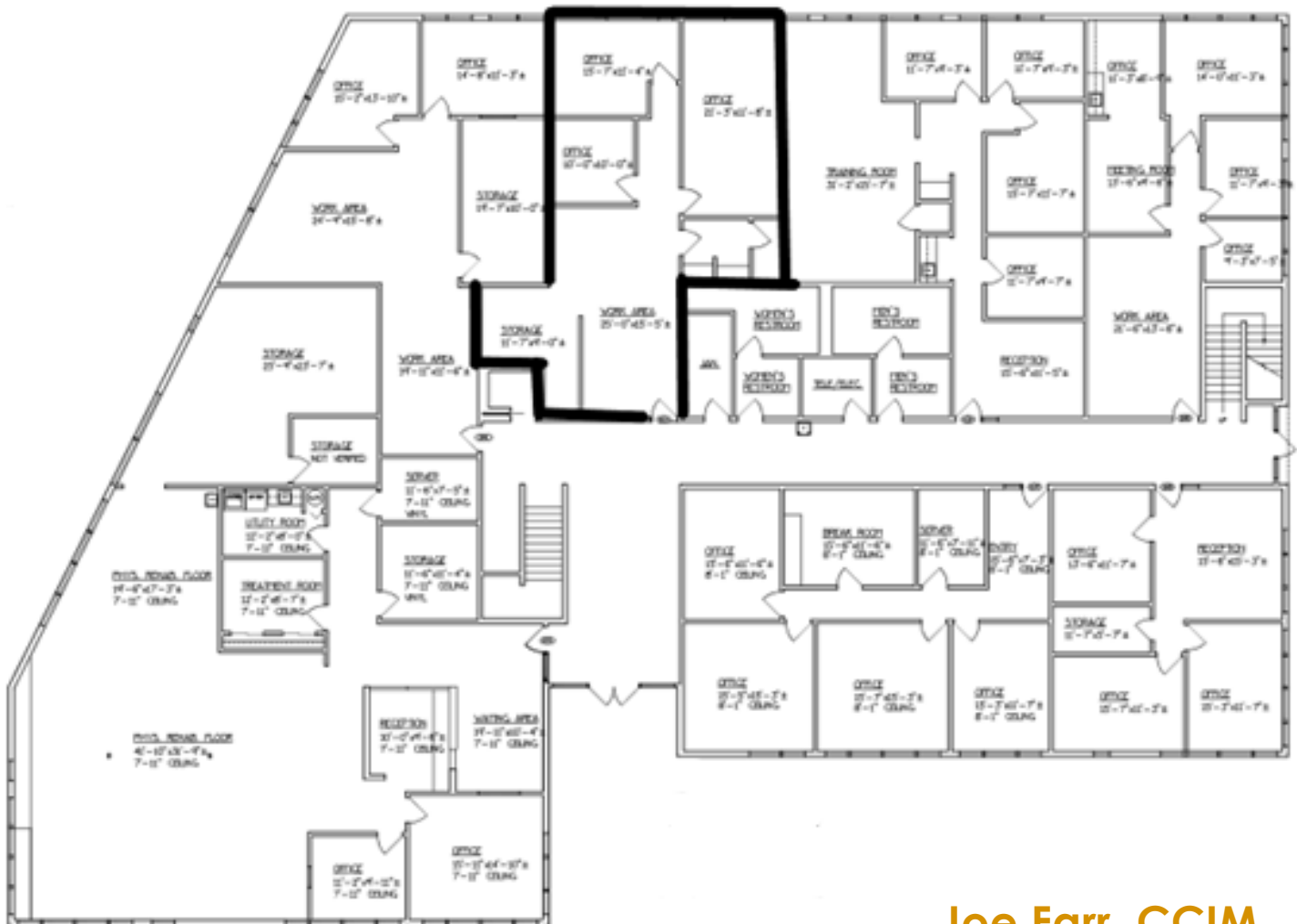
## Office Space For Lease



Property Owned By

**GEMINI  
ROSEMONT**  
COMMERCIAL REAL ESTATE®

**5801 Osuna Rd. NE B-103 +/-1,381 RSF**



**Joe Farr, CCIM**

Qualifying Broker

(505) 246-9800

[jfarr@dukecityllc.com](mailto:jfarr@dukecityllc.com)

NM License# 19522



*The information presented here is deemed to be accurate, however it has not been independently verified. We make no guarantee, warranty or representation. It is your responsibility to confirm accuracy and completeness.*

# Seagull Office

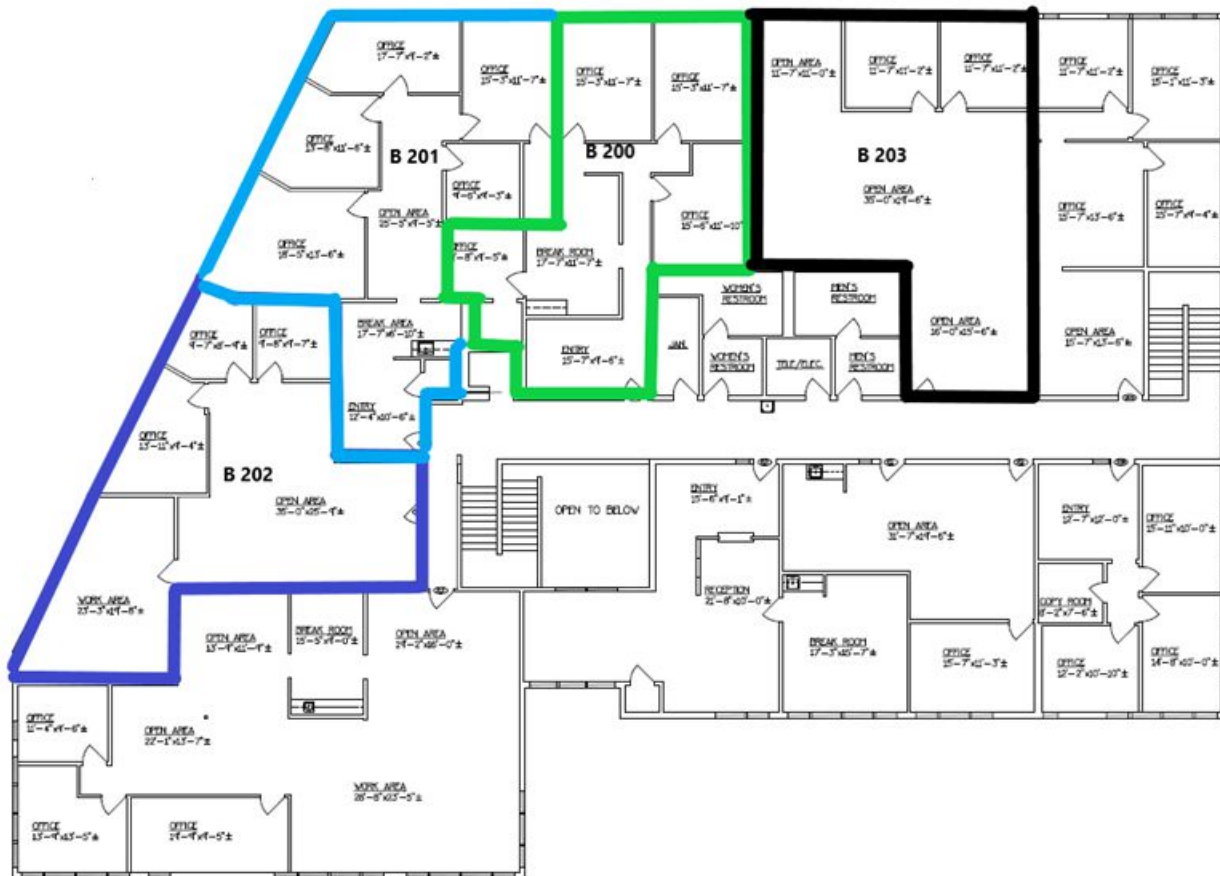
## Office Space For Lease



Property Owned By

**GEMINI  
ROSEMONT**  
COMMERCIAL REAL ESTATE®

6100 Seagull St. NE    B-200 +/- 1,334 RSF    B-201 +/- 1,671 RSF  
B-202 +/- 1,629 RSF    -203 +/- 1,570 RSF



**Joe Farr, CCIM**

Qualifying Broker

(505) 246-9800

[jfarr@dukecityllc.com](mailto:jfarr@dukecityllc.com)

NM License #19522



*The information presented here is deemed to be accurate, however it has not been independently verified. We make no guarantee, warranty or representation. It is your responsibility to confirm accuracy and completeness.*