

16546 E. NINE MILE ROAD  
EASTPOINTE, MICHIGAN

RETAIL/OFFICE FOR SALE  
1,950 Square Feet Available



**SIGNATURE  
ASSOCIATES**  
KNOW SIGNATURE | KNOW RESULTS

**GREAT OPPORTUNITY!**



## PROPERTY FEATURES

- 1,950 square feet available
- Zoned B-3
- 15 parking spaces
- Sale Price: \$250,000 (\$128.21/sq.ft.)

**Comments:** Excellent opportunity to own. Former pharmacy with many possible uses. Good parking. Please contact Broker for more details.



For more information, please contact:

**PETER VANDERKAAY**  
(248) 359 3837  
pvanderkaay@signatureassociates.com

**JOE STACK**  
(248) 359 0615  
jstack@signatureassociates.com

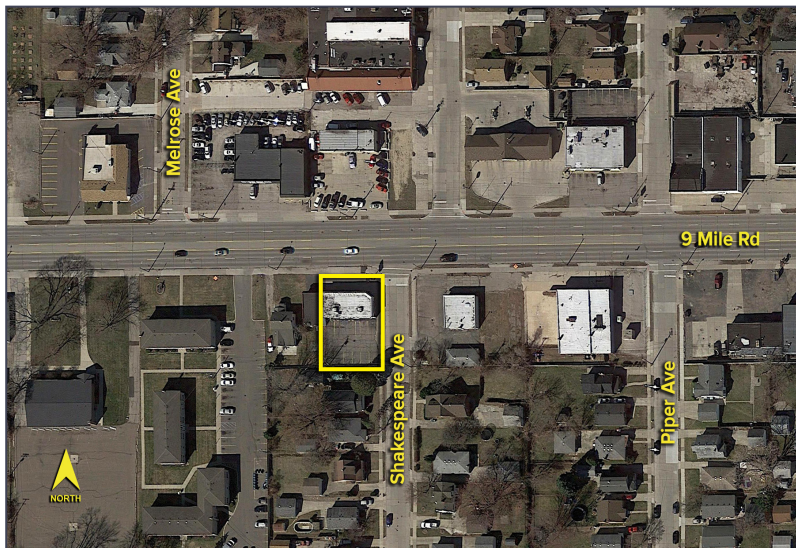
**SIGNATURE ASSOCIATES**  
One Towne Square, Suite 1200  
Southfield, MI 48076  
www.signatureassociates.com



# 16546 E. Nine Mile Road – Eastpointe, Michigan

Retail/Office For Sale

1,950  
Square Feet  
AVAILABLE

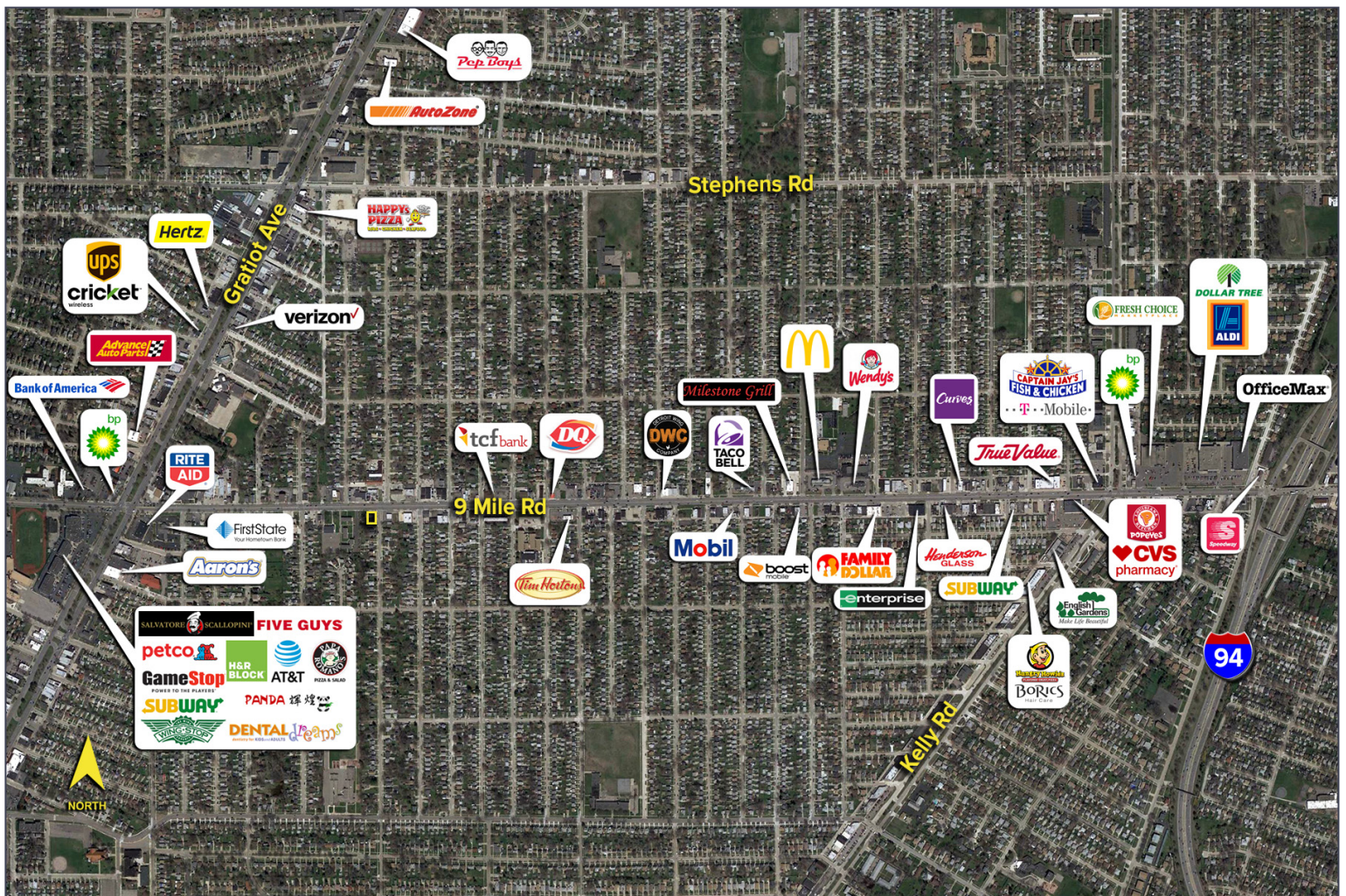


## DEMOGRAPHICS

	POPULATION	MED. HH INCOME
1 MILE	21,117	\$50,593
3 MILE	151,342	\$52,965
5 MILE	363,355	\$55,804

## TRAFFIC COUNTS (TWO-WAY)

37,080	Gratiot Ave. N. of 9 Mile Rd.
26,531	Gratiot Ave. S. of 9 Mile Rd.
24,715	9 Mile Rd. E. of Gratiot Ave.
21,054	9 Mile Rd. W. of Gratiot Ave.



For more information, please contact:

**PETER VANDERKAAY**

(248) 359 3837

[pvanderkaay@signatureassociates.com](mailto:pvanderkaay@signatureassociates.com)

**JOE STACK**

(248) 359 0615

[jstack@signatureassociates.com](mailto:jstack@signatureassociates.com)

**SIGNATURE ASSOCIATES**

One Towne Square, Suite 1200

Southfield, MI 48076

[www.signatureassociates.com](http://www.signatureassociates.com)

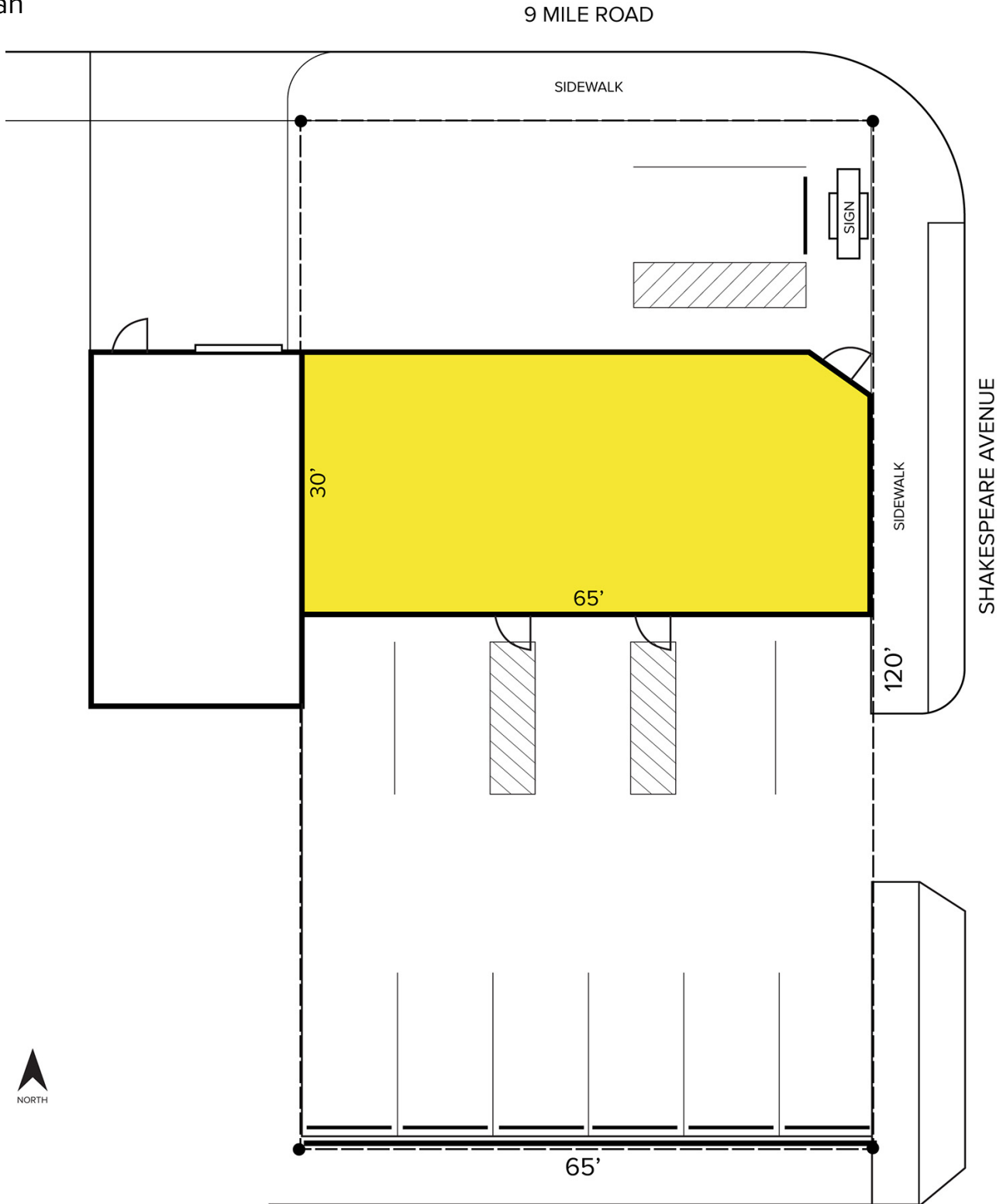


# 16546 E. Nine Mile Road – Eastpointe, Michigan

Retail/Office For Sale

1,950  
Square Feet  
AVAILABLE

## Site Plan



For more information, please contact:

**PETER VANDERKAAY**

(248) 359 3837

[pvanderkaay@signatureassociates.com](mailto:pvanderkaay@signatureassociates.com)

**JOE STACK**

(248) 359 0615

[jstack@signatureassociates.com](mailto:jstack@signatureassociates.com)

**SIGNATURE ASSOCIATES**

One Towne Square, Suite 1200

Southfield, MI 48076

[www.signatureassociates.com](http://www.signatureassociates.com)