

73 East Jefferson Street

Office Building For Sale or For Lease

Jefferson, Ohio 44047 (Ashtabula County)

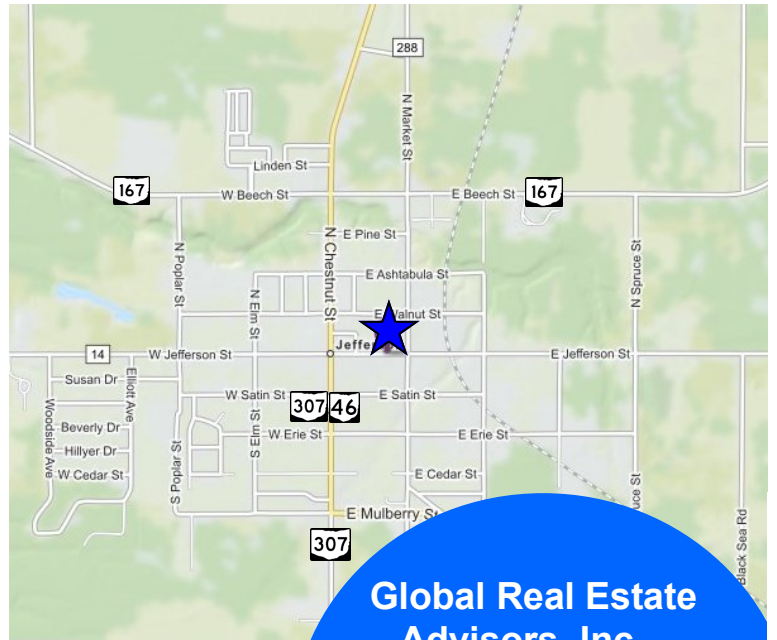


73 East Jefferson St., Jefferson, Ohio 44047

Property Info:

- 4,000± SF Building plus Basement
- .53± Acres
- 2 Story Office Building
- Located in Downtown Jefferson, Ashtabula County Seat
- Less than 2 Blocks From County Courthouse
- Easy Access to SR 45, SR 46, SR 307 and minutes from I-90
- Available for Lease or For Sale

Sale Priced at \$170,000.00



**Global Real Estate
Advisors, Inc.**

Neil Sawicki, SIOR, Broker

440.255.5552 x 221

Neil@GlobalCommercialRE.com

Cell 440.339.8585



GLOBAL

www.GlobalCommercialRE.com

8585 East Ave., Mentor, Ohio 44060

**Real Estate Advisors Inc.
BROKER**

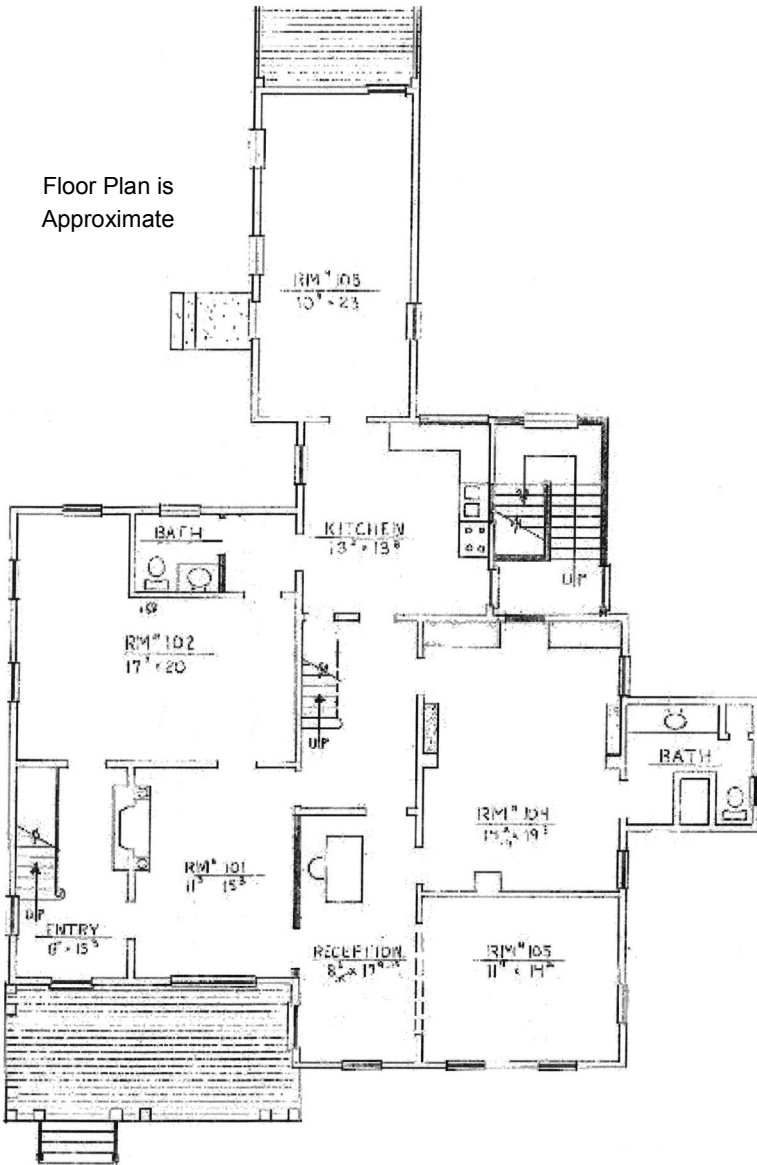
This information has been secured from sources we believe are reliable, but we make no representations or warranties, expressed or implied, as to the accuracy of the information. References to condition, square footage or age are approximate. Buyer or Tenant acknowledges that they are relying on their own investigations and are not relying on Broker provided information. Procuring broker shall only be entitled to a commission, calculated in accordance with the rates approved by our principal only if such procuring broker executes a brokerage agreement acceptable to us and our principal and the conditions as set forth in the brokerage agreement are fully and unconditionally satisfied. Although all information furnished regarding property for sale, rental, or financing is from sources deemed reliable, such information has not been verified and no express representation is made nor is any to be implied as to the accuracy thereof and it is submitted subject to errors, omissions, change of price, rental or other conditions, prior sale, lease or financing, or withdrawal without notice and to any special conditions imposed by our principal.

73 East Jefferson Street

Office Building For Sale or For Lease

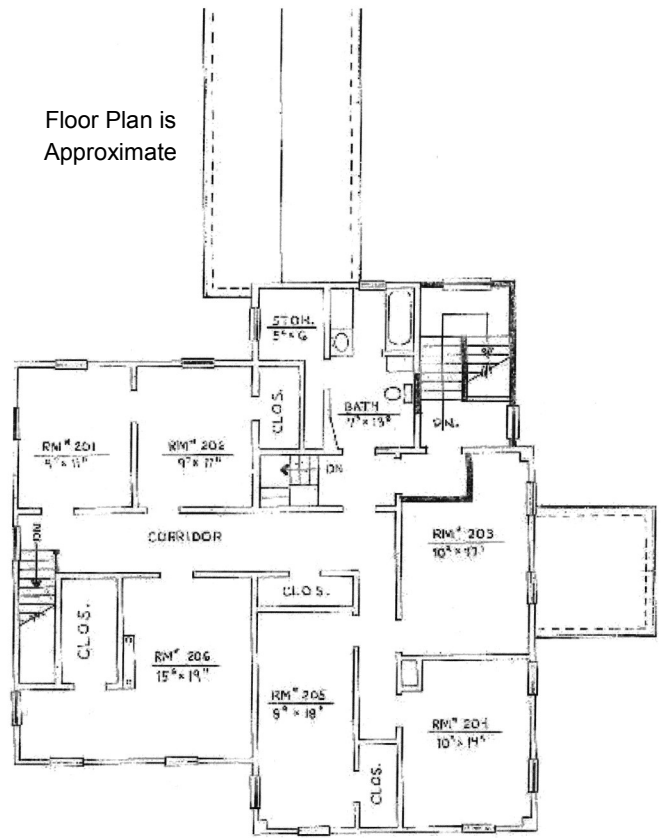
Jefferson, Ohio 44047 (Ashtabula County)

Floor Plan is
Approximate



EXISTING FIRST FLOOR PLAN

Floor Plan is
Approximate



EXISTING SECOND FLOOR PLAN



www.GlobalCommercialRE.com

8585 East Ave., Mentor, Ohio 44060

Real Estate Advisors Inc.
BROKER

**Global Real Estate
Advisors, Inc.**

Neil Sawicki, SIOR, Broker

440.255.5552 x 221

Neil@GlobalCommercialRE.com

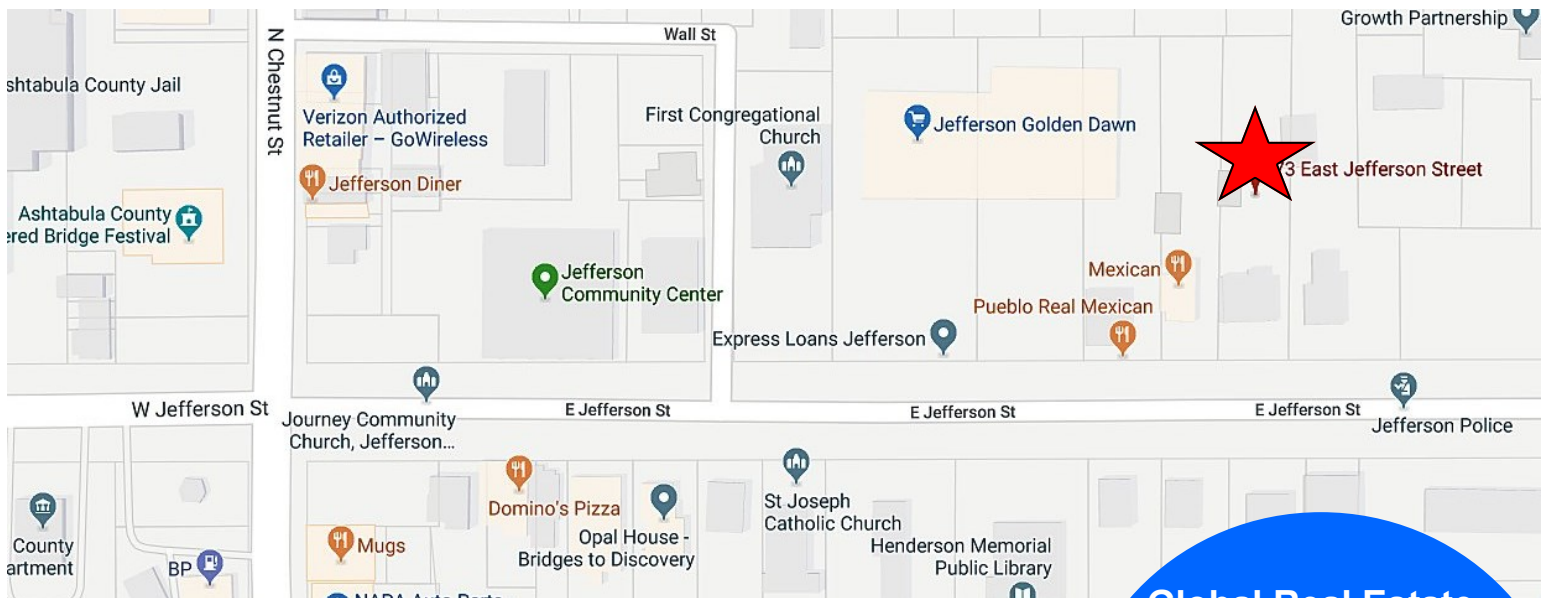
440.339.8585 Cell

This information has been secured from sources we believe are reliable, but we make no representations or warranties, expressed or implied, as to the accuracy of the information. References to condition, square footage or age are approximate. Buyer or Tenant acknowledges that they are relying on their own investigations and are not relying on Broker provided information. Procuring broker shall only be entitled to a commission, calculated in accordance with the rates approved by our principal only if such procuring broker executes a brokerage agreement acceptable to us and our principal and the conditions as set forth in the brokerage agreement are fully and unconditionally satisfied. Although all information furnished regarding property for sale, rental, or financing is from sources deemed reliable, such information has not been verified and no express representation is made nor is any to be implied as to the accuracy thereof and it is submitted subject to errors, omissions, change of price, rental or other conditions, prior sale, lease or financing, or withdrawal without notice and to any special conditions imposed by our principal.

73 East Jefferson Street

Office Building For Sale or For Lease

Jefferson, Ohio 44047 (Ashtabula County)



www.GlobalCommercialRE.com
8585 East Ave., Mentor, Ohio 44060
Real Estate Advisors Inc.
BROKER

**Global Real Estate
Advisors, Inc.**
Neil Sawicki, SIOR, Broker
440.255.5552 x 221
Neil@GlobalCommercialRE.com
440.339.8585 Cell

This information has been secured from sources we believe are reliable, but we make no representations or warranties, expressed or implied, as to the accuracy of the information. References to condition, square footage or age are approximate. Buyer or Tenant acknowledges that they are relying on their own investigations and are not relying on Broker provided information. Procuring broker shall only be entitled to a commission, calculated in accordance with the rates approved by our principal only if such procuring broker executes a brokerage agreement acceptable to us and our principal and the conditions as set forth in the brokerage agreement are fully and unconditionally satisfied. Although all information furnished regarding property for sale, rental, or financing is from sources deemed reliable, such information has not been verified and no express representation is made nor is any to be implied as to the accuracy thereof and it is submitted subject to errors, omissions, change of price, rental or other conditions, prior sale, lease or financing, or withdrawal without notice and to any special conditions imposed by our principal.