

OFFERING SUMMARY

Available SF: 1,100 SF

Lease Rate: \$2,500 per month (Full Service)

Building Size: 1,100

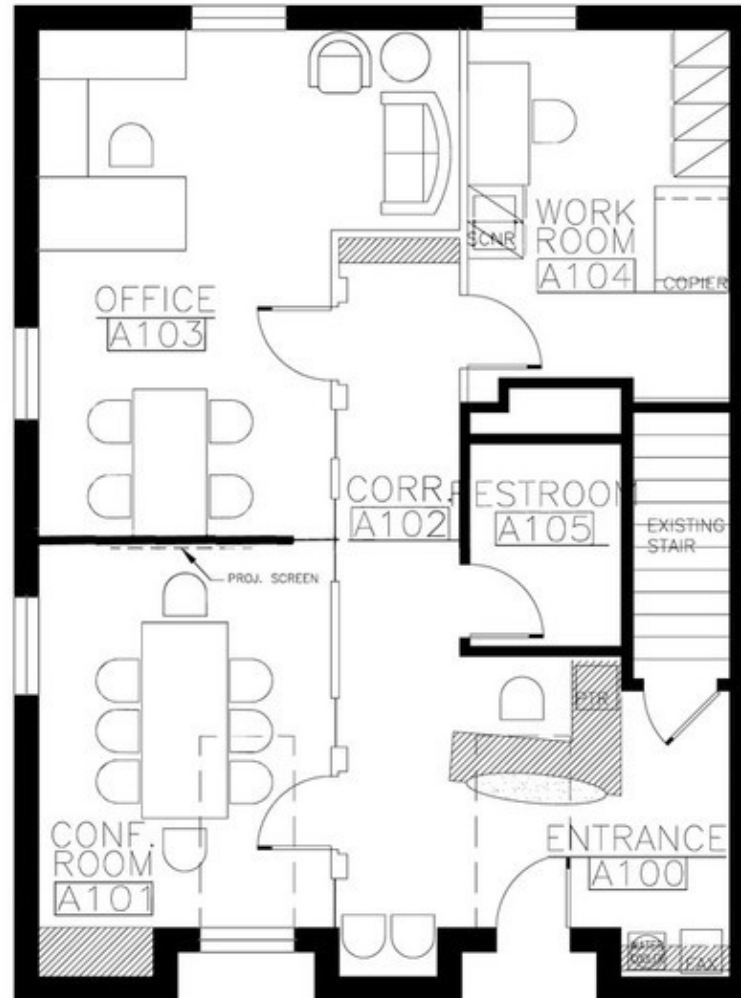
PROPERTY OVERVIEW

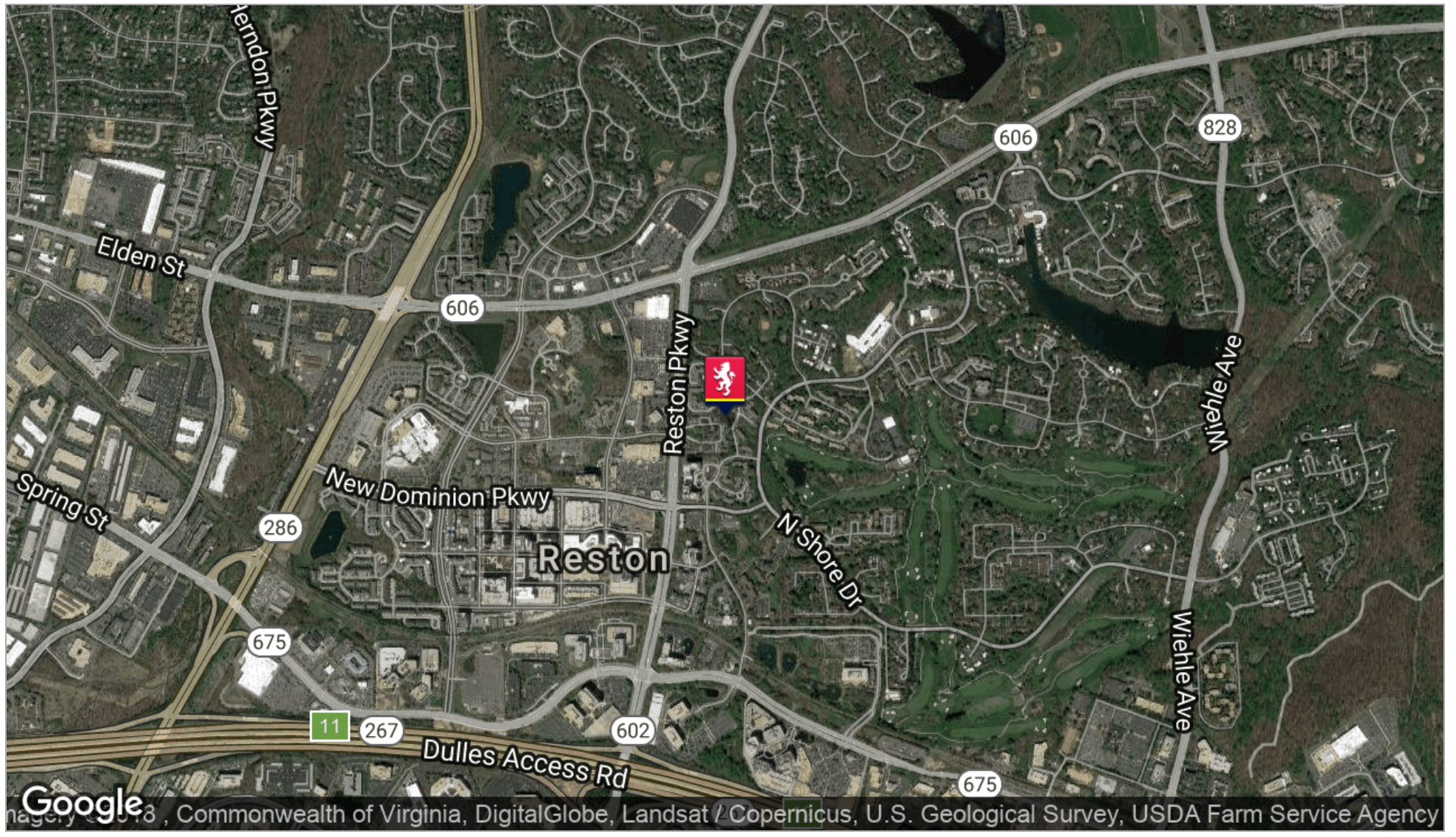
Office Condo at Bowman Green Drive and Reston Parkway, directly across from the Town Center.

PROPERTY HIGHLIGHTS

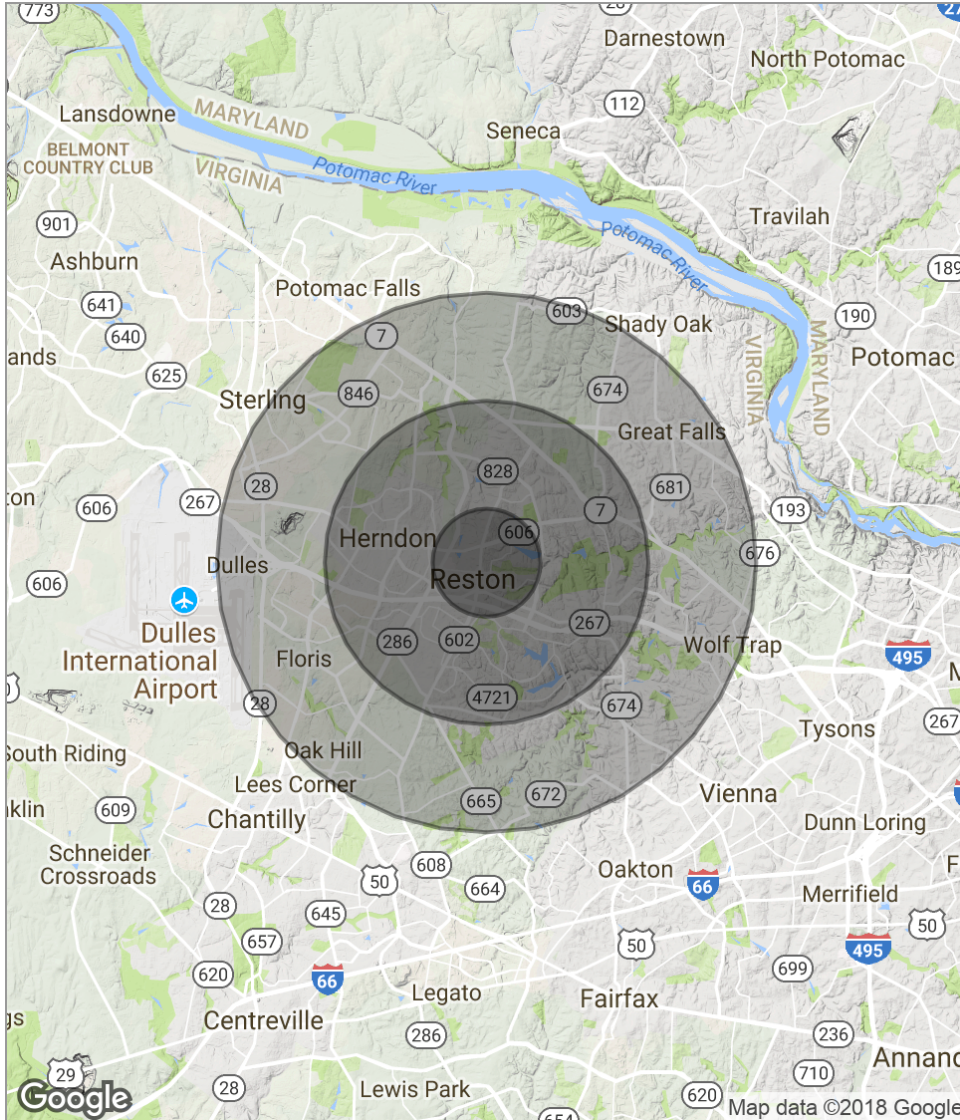
- First floor - Reception, 2 Offices and large conference room.
- Fully furnished, custom designed, and ready to use.
- Abundance of free, unlimited parking.
- Close proximity to Reston Hospital and Emergency Center
- Walking distance to Reston Town Center
- Perfect for Office, Medical, Dental, Home Services







Google, Commonwealth of Virginia, DigitalGlobe, Landsat / Copernicus, U.S. Geological Survey, USDA Farm Service Agency



POPULATION	1 MILE	3 MILES	5 MILES
Total population	15,014	99,415	226,924
Median age	39.3	38.3	37.3
Median age (Male)	37.7	37.6	36.9
Median age (Female)	41.1	39.1	37.8
HOUSEHOLDS & INCOME	1 MILE	3 MILES	5 MILES
Total households	7,839	41,365	84,241
# of persons per HH	1.9	2.4	2.7
Average HH income	\$113,993	\$126,029	\$138,877
Average house value	\$441,998	\$529,159	\$603,908

** Demographic data derived from 2010 US Census*