

For Sale

# Land on Argent

\$450,000



## 7 Acres on Argent Blvd

Argent Blvd

Hardeeville, South Carolina 29927

### Property Highlights

- 7.24 Acres located on Argent Blvd just down from Highway 170
- Excellent visibility on Argent, a main thoroughfare in the area.
- Easy access to Highway 278, Highway 170 & Interstate 95
- Located very close to Sun City and the University of South Carolina Beaufort Campus
- Contact Agent for Zoning Information

### OFFERING SUMMARY

<b>Sale Price</b>	\$450,000
<b>Lot Size</b>	7.24 Acres
<b>Jasper Co. Zoning</b>	Contact Agent

### DEMOGRAPHICS

Stats	Population	Avg. HH Income
<b>3 Miles</b>	10,925	\$74,250
<b>10 Miles</b>	49,490	\$74,482
<b>20 Miles</b>	243,949	\$69,121

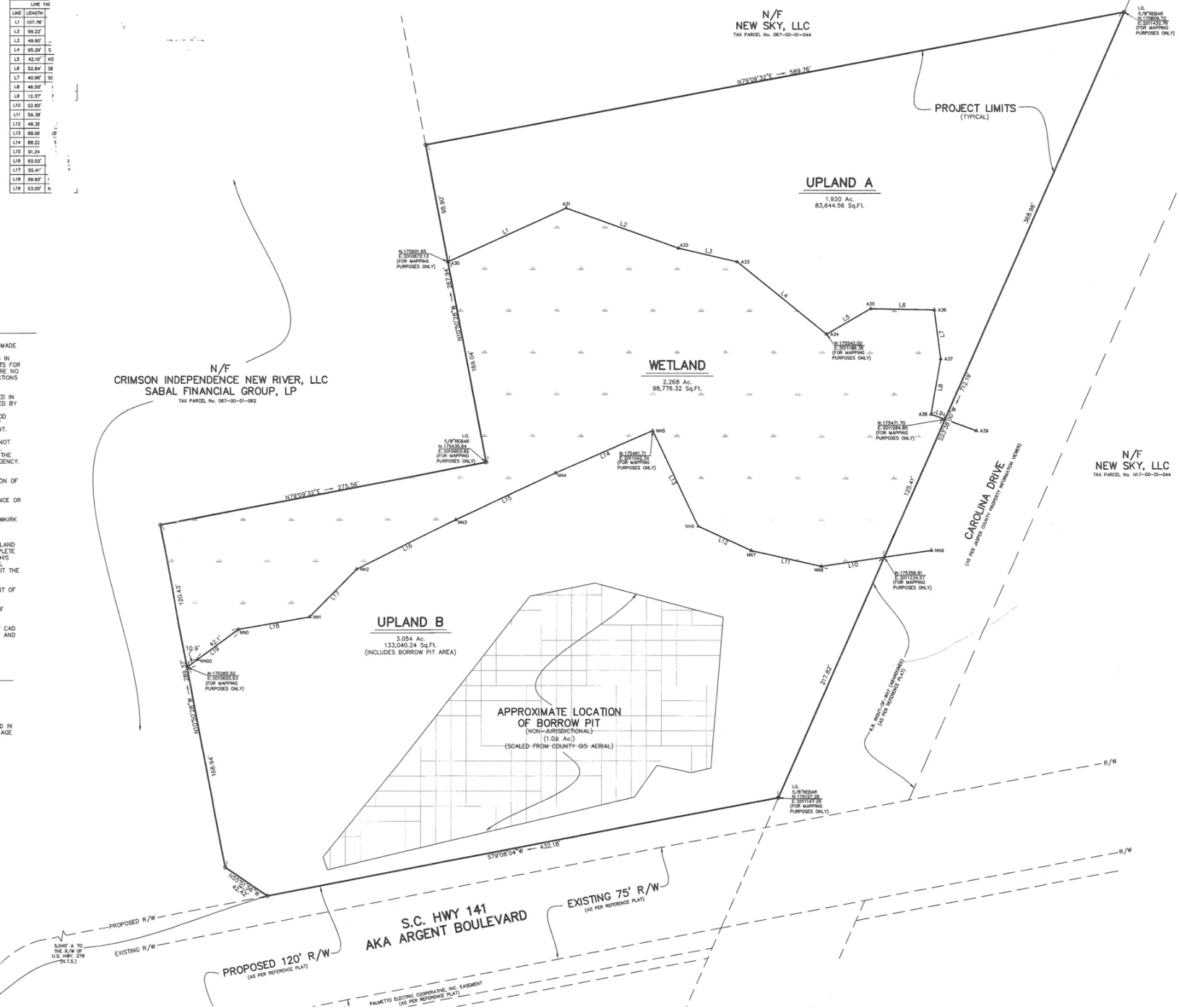
For more information

1227 May River Road, Suite 100  
 Bluffton, SC 29910  
 843 837 4460 tel  
 naicarolinacharter.com

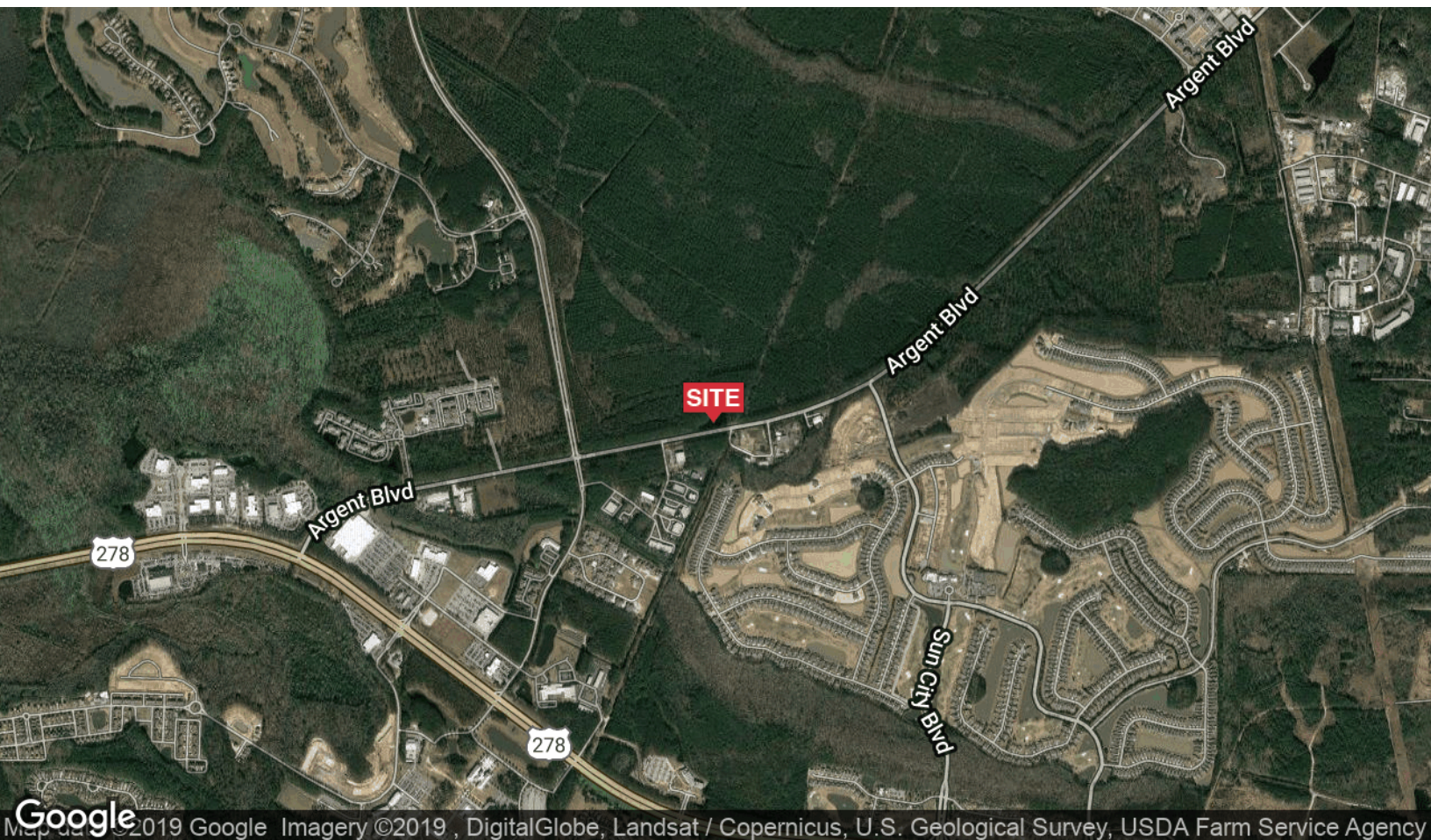


LINE	LENGTH
L1	107.78
L2	95.27
L3	49.97
L4	95.29
L5	42.10
L6	52.24
L7	42.96
L8	48.95
L9	12.37
L10	52.83
L11	56.26
L12	48.32
L13	88.06
L14	88.32
L15	91.24
L16	92.02
L17	55.41
L18	59.89
L19	53.07

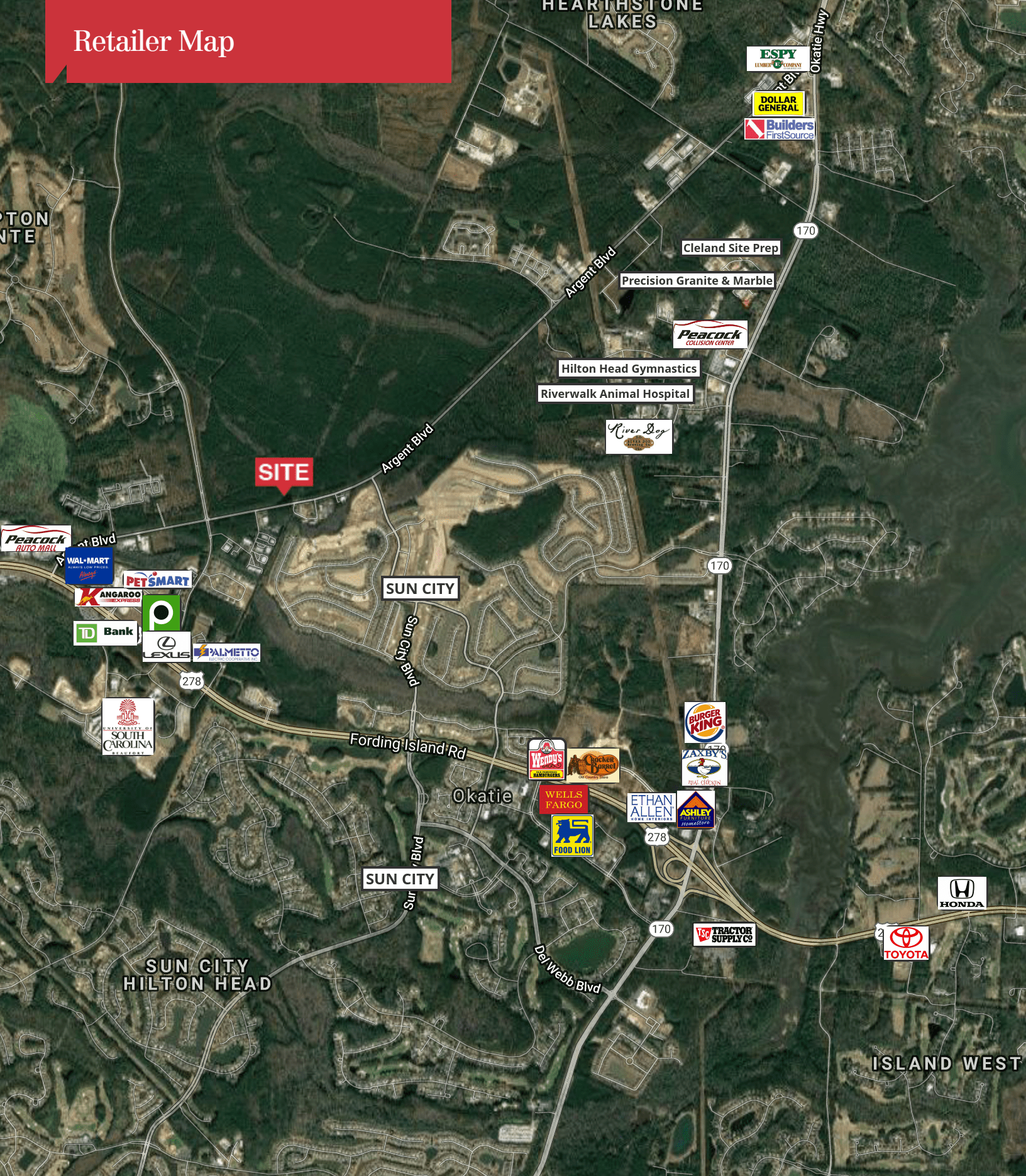
MADE  
IN  
ES FOR  
RE NO  
TIONS  
ED IN  
ED BY  
OD  
IT.  
NOT  
THE  
GENCY.  
ON OF  
ACE OR  
WIRK  
LAND  
LETE  
HIS  
BY THE  
IT OF  
F  
CAD  
AND  
D IN  
AGE



# Location Maps



# Retailer Map

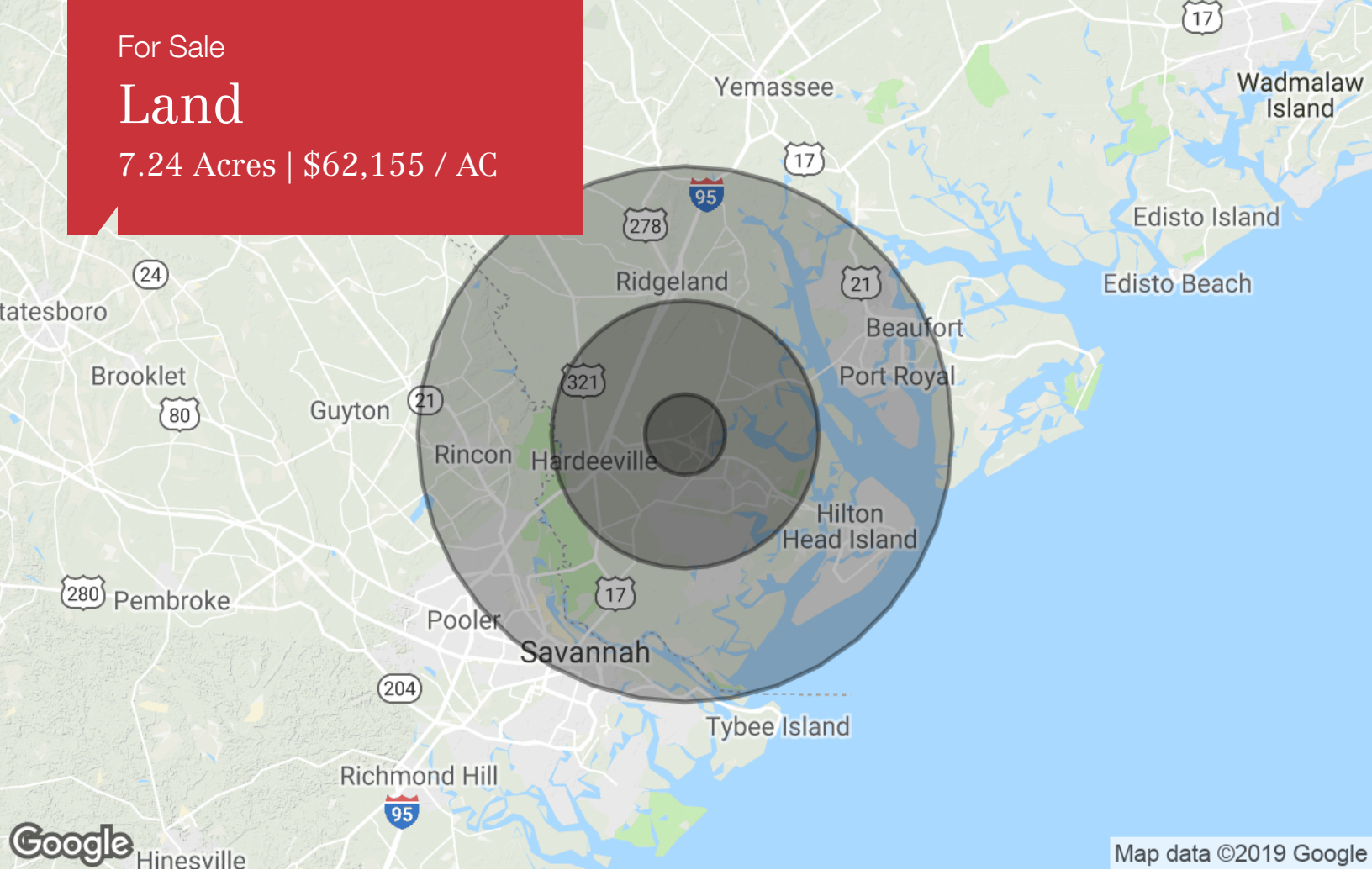


Map data ©2019 Google Imagery ©2019 , DigitalGlobe, Landsat / Copernicus, U.S. Geological Survey, USDA Farm Service Agency

For Sale

# Land

7.24 Acres | \$62,155 / AC



Map data ©2019 Google

## Population

	3 Miles	10 Miles	20 Miles
TOTAL POPULATION	10,925	49,490	243,949
MEDIAN AGE	64.9	43.0	37.8
MEDIAN AGE (MALE)	65.3	42.8	37.2
MEDIAN AGE (FEMALE)	64.4	42.9	38.3

## Households & Income

	3 Miles	10 Miles	20 Miles
TOTAL HOUSEHOLDS	5,855	20,555	95,512
# OF PERSONS PER HH	1.9	2.4	2.6
AVERAGE HH INCOME	\$74,250	\$74,482	\$69,121
AVERAGE HOUSE VALUE	\$275,813	\$295,354	\$320,454

\* Demographic data derived from 2010 US Census