

# Rare Plug & Play Pruneyard Special (Sublease)

1999 South Bascom Avenue, Suite 990, Campbell



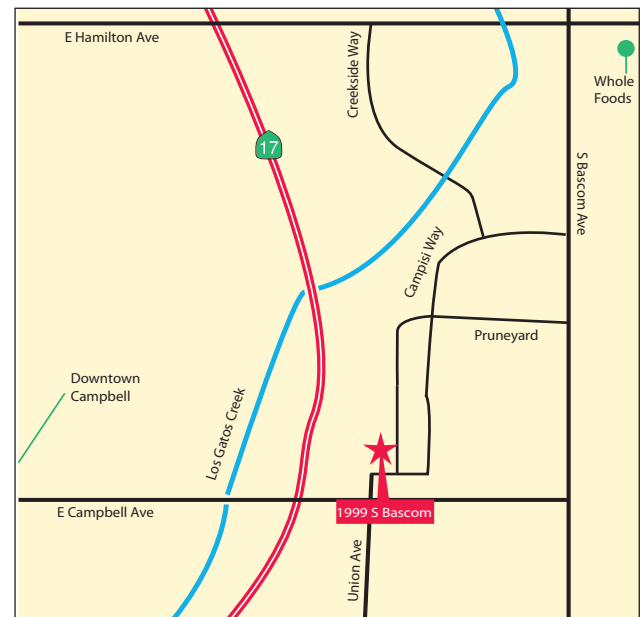
**NEW RATE**  
**\$3.25 Full Service**



## ±2,915 Square Feet Available

We are pleased to offer the following space:

- ◆ Brand New Finishes
- ◆ Exterior Windows on 2 Sides of the Suite
- ◆ Shower & Fitness Center
- ◆ Walking Distance to Nearby Retail Amenities
- ◆ Available Immediately
- ◆ Plenty of Parking
- ◆ \$3.59 Full Service
- ◆ Potential Plug & Play
- ◆ LED March 31, 2019
- ◆ VTA Light Rail



**Gabe D. Regalado** Associate Director 408.455.4913 [gabe.regalado@ngkf.com](mailto:gabe.regalado@ngkf.com) CA RE License #02008286

**Shawn Kellenberger** Executive Managing Director 408.987.4170 [skellenberger@ngkf.com](mailto:skellenberger@ngkf.com) CA RE License #01706215

**Newmark**  
**Knight Frank**

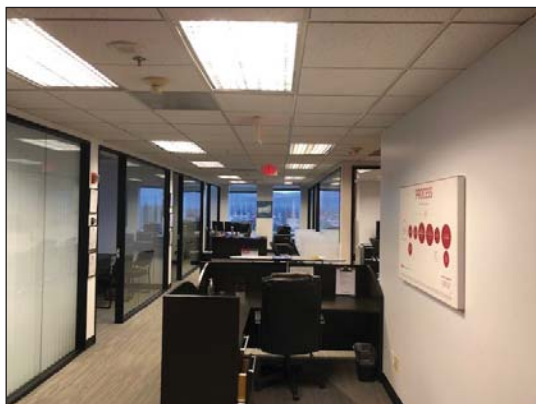
2804 Mission College Boulevard., Suite 120, Santa Clara, CA 95054 [www.ngkf.com](http://www.ngkf.com)

# Rare Plug & Play Pruneyard Special (Sublease)

1999 South Bascom Avenue, Suite 990, Campbell



## Interior Photos



**Gabe D. Regalado** Associate Director 408.455.4913 [gabe.regalado@ngkf.com](mailto:gabe.regalado@ngkf.com) CA RE License #02008286

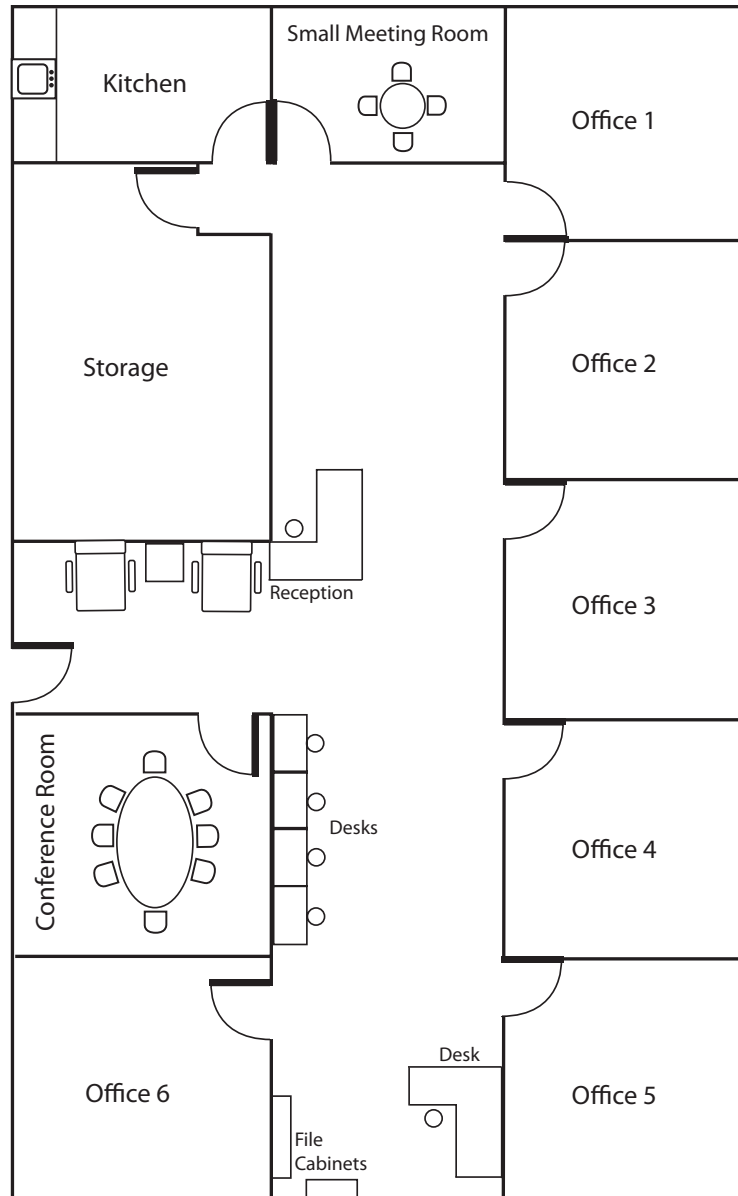
**Shawn Kellenberger** Executive Managing Director 408.987.4170 [skellenberger@ngkf.com](mailto:skellenberger@ngkf.com) CA RE License #01706215

**Newmark  
Knight Frank**

2804 Mission College Boulevard., Suite 120, Santa Clara, CA 95054 [www.ngkf.com](http://www.ngkf.com)

# Rare Plug & Play Pruneyard Special (Sublease)

1999 South Bascom Avenue, Suite 990, Campbell



**Gabe D. Regalado** Associate Director 408.455.4913 [gabe.regalado@ngkf.com](mailto:gabe.regalado@ngkf.com) CA RE License #02008286

**Shawn Kellenberger** Executive Managing Director 408.987.4170 [skellenberger@ngkf.com](mailto:skellenberger@ngkf.com) CA RE License #01706215

**Newmark  
Knight Frank**

2804 Mission College Boulevard., Suite 120, Santa Clara, CA 95054 [www.ngkf.com](http://www.ngkf.com)