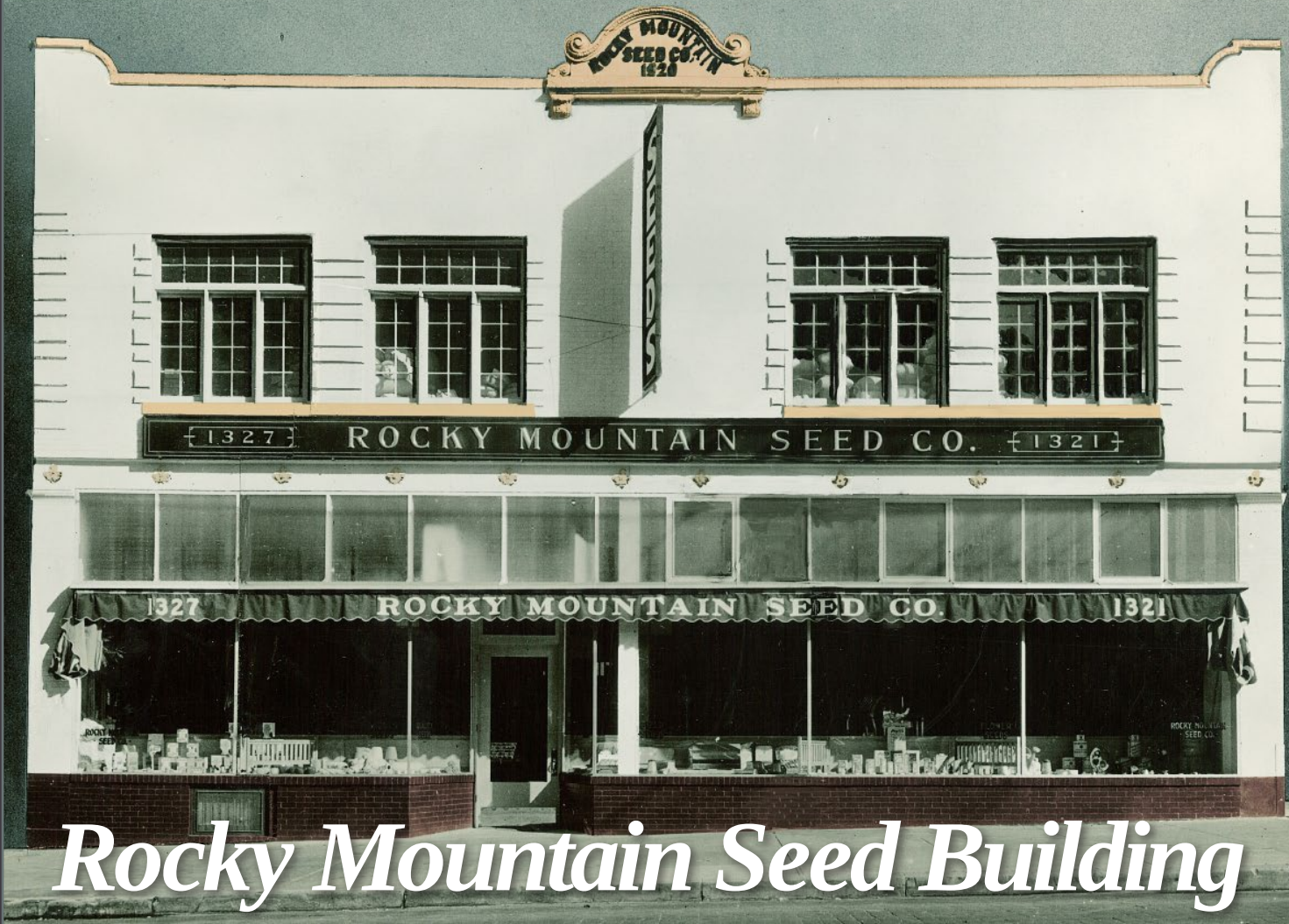
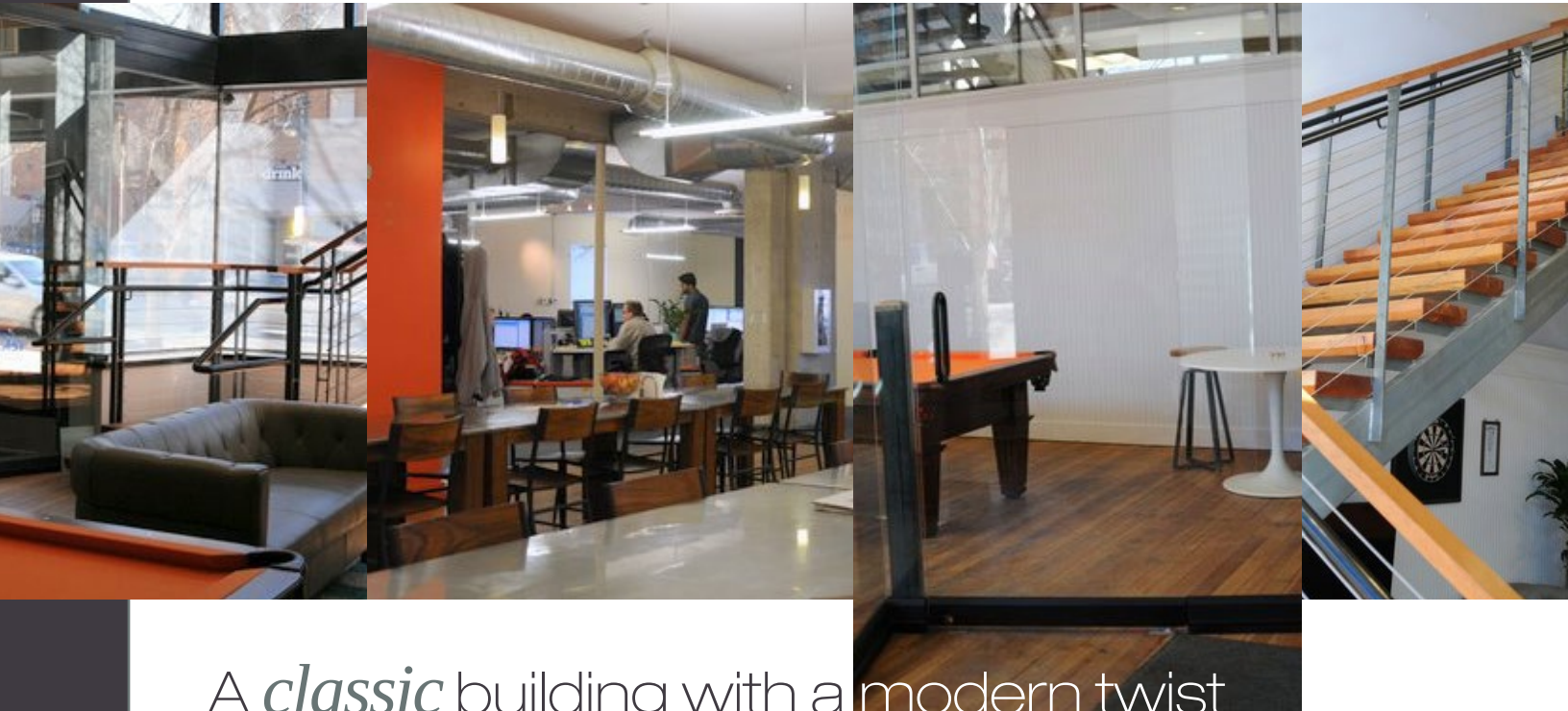


FOR LEASE > PRIME LODO OFFICE SPACE



# Rocky Mountain Seed Building

1321 15th Street | Denver, CO 80202



A *classic* building with a *modern twist*

No warranty or representation is made as to the accuracy of the foregoing information. Terms of sale or lease and availability are subject to change or withdrawal without notice.

# Rocky Mountain Seed Building

## Building Information

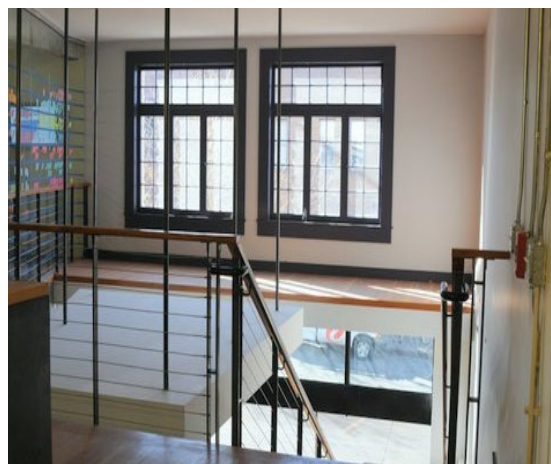
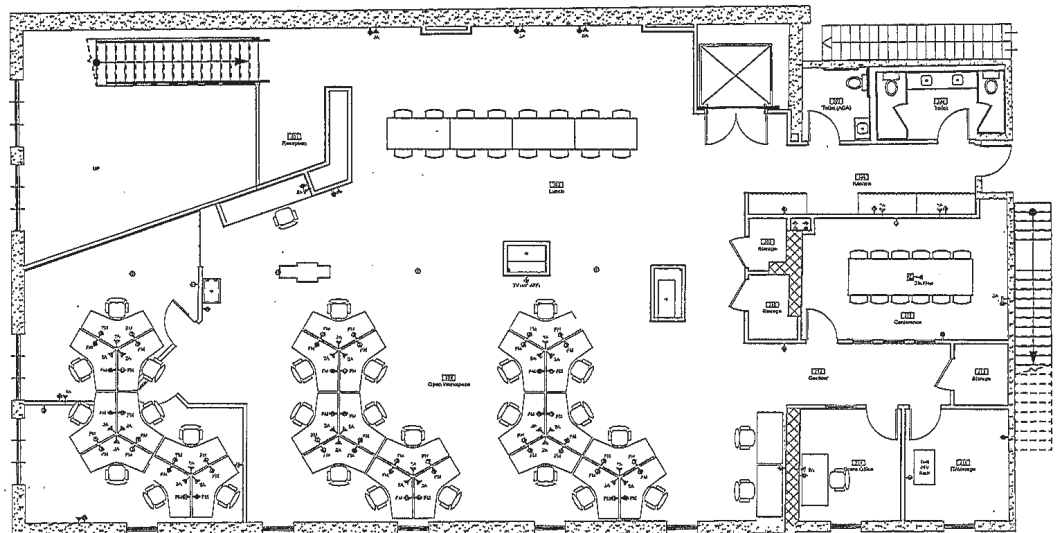
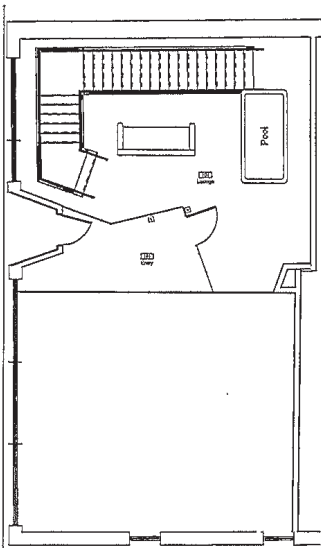
- > Total Square Feet: 11,321 RSF
- > Area Available: 4,920 RSF + 505 RSF (Roof)
- > Floors: 1st floor lobby with open stairwell to 2nd floor
- > Year Built: 1899, Renovated 2008

## Highlights

- > Complete renovation throughout
- > New state-of-the-art lighting, HVAC with rooftop unit
- > New rooftop patio
- > Garage and alley parking nearby
- > Exterior Signage Available
- > Multiple restaurants and retail shops
- > 1920's Art Deco facade
- > Covered parking nearby
- > Located near two Light Rail Stations/Minutes from Union Station

1st Floor | 635 SF

2nd Floor | 4,285 SF



CHUCK ZEMAN  
303 565 3783  
DENVER, CO  
chuck.zeman@colliers.com

DAVID MORRISON, CCIM  
303 565 3784  
DENVER, CO  
david.morrison@colliers.com

COLLIERS INTERNATIONAL  
1200 17th Street, Suite 1225  
Denver, CO 80202  
www.colliers.com