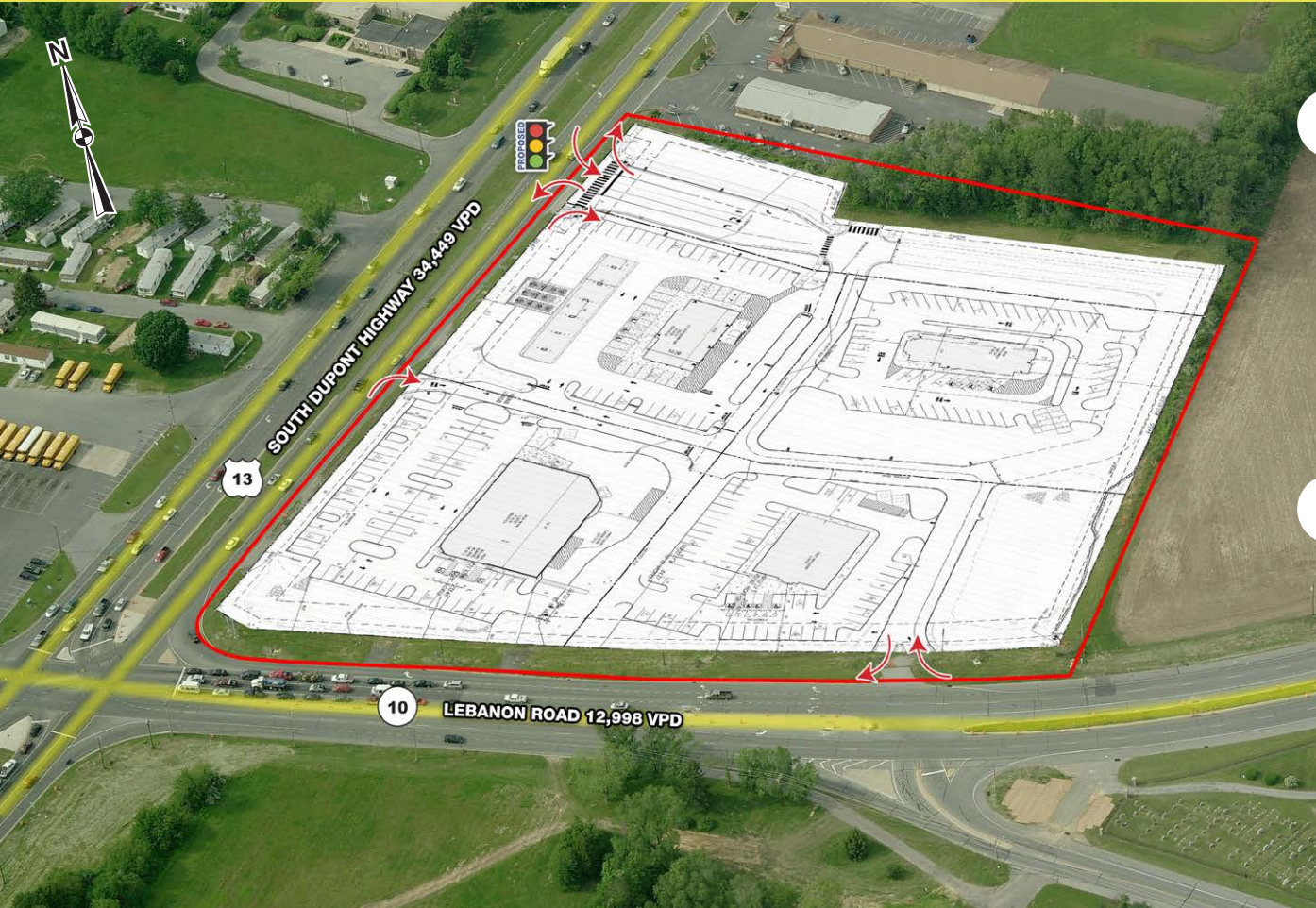


CAMDEN SQUARE ROUTE 13 & ROUTE 10 DOVER, DE

±4,625 - 13,225 SF & PAD SITES FOR LEASE



property highlights.

- Nearby retailers include Walmart and Lowe's
- Located at a traffic light corner with potential drive-thru
- Various pad sites and inline space available for lease/build-to-suit
- Located just south of Dover, the state capital!

stats.

2018 DEMOGRAPHICS*	1 MILE	3 MILES	5 MILES
EST. POPULATION	3,340	22,258	64,936
EST. HOUSEHOLDS	1,270	8,154	23,892
EST. AVG. HH INCOME	\$70,402	\$82,047	\$76,386

ROUTE 13 TRAFFIC COUNT: 34,449 VPD *AGS 2018
ROUTE 10 TRAFFIC COUNT: 12,998 VPD

LEASED BY:



OWNED & MANAGED BY:



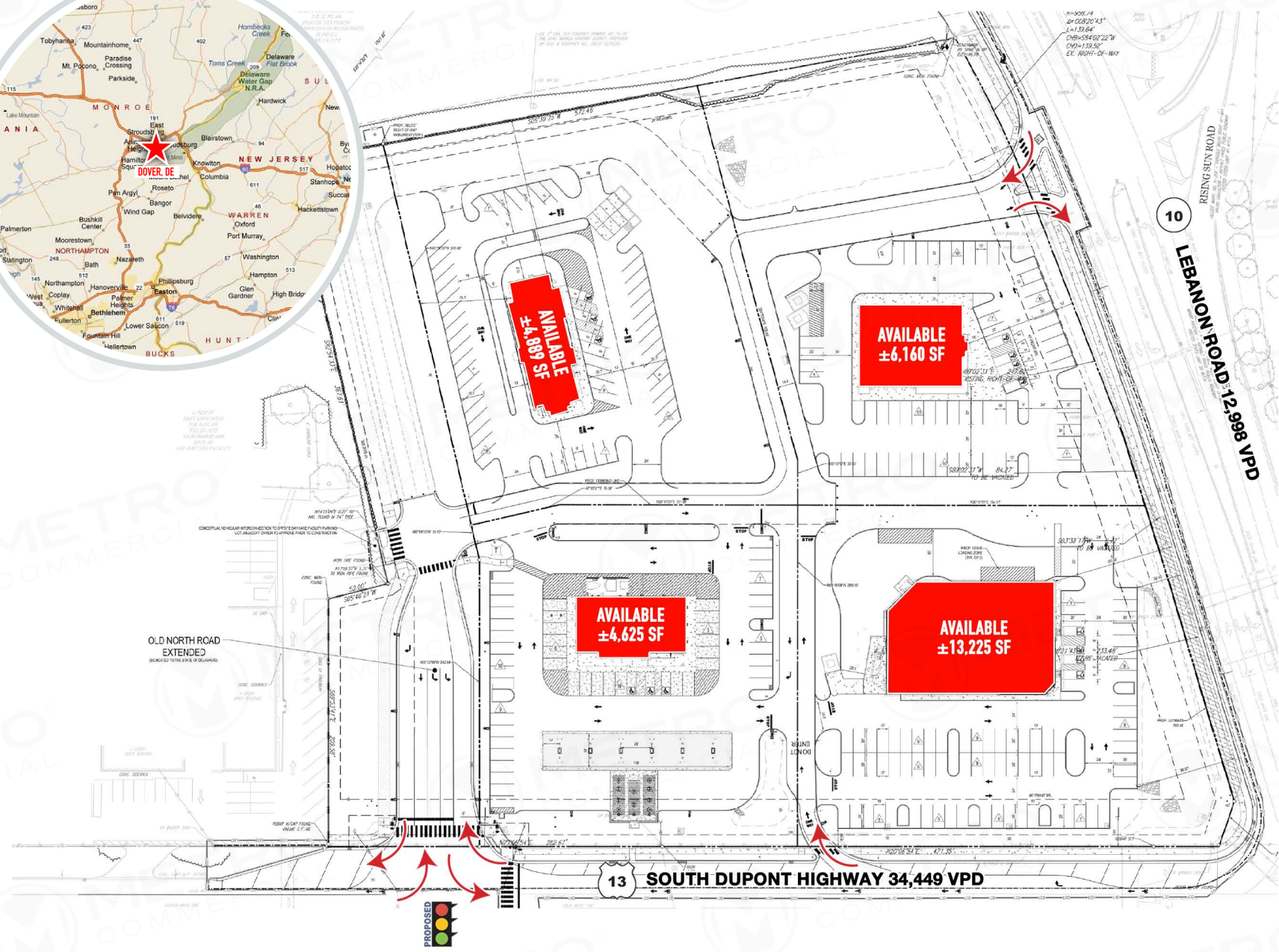
MetroCommercial.com | PHILADELPHIA, PA | PLYMOUTH MEETING, PA | MOUNT LAUREL, NJ | NAPLES, FL

get in touch.

JOE DOUGHERTY

office 610.825.5222
direct 610.260.2670

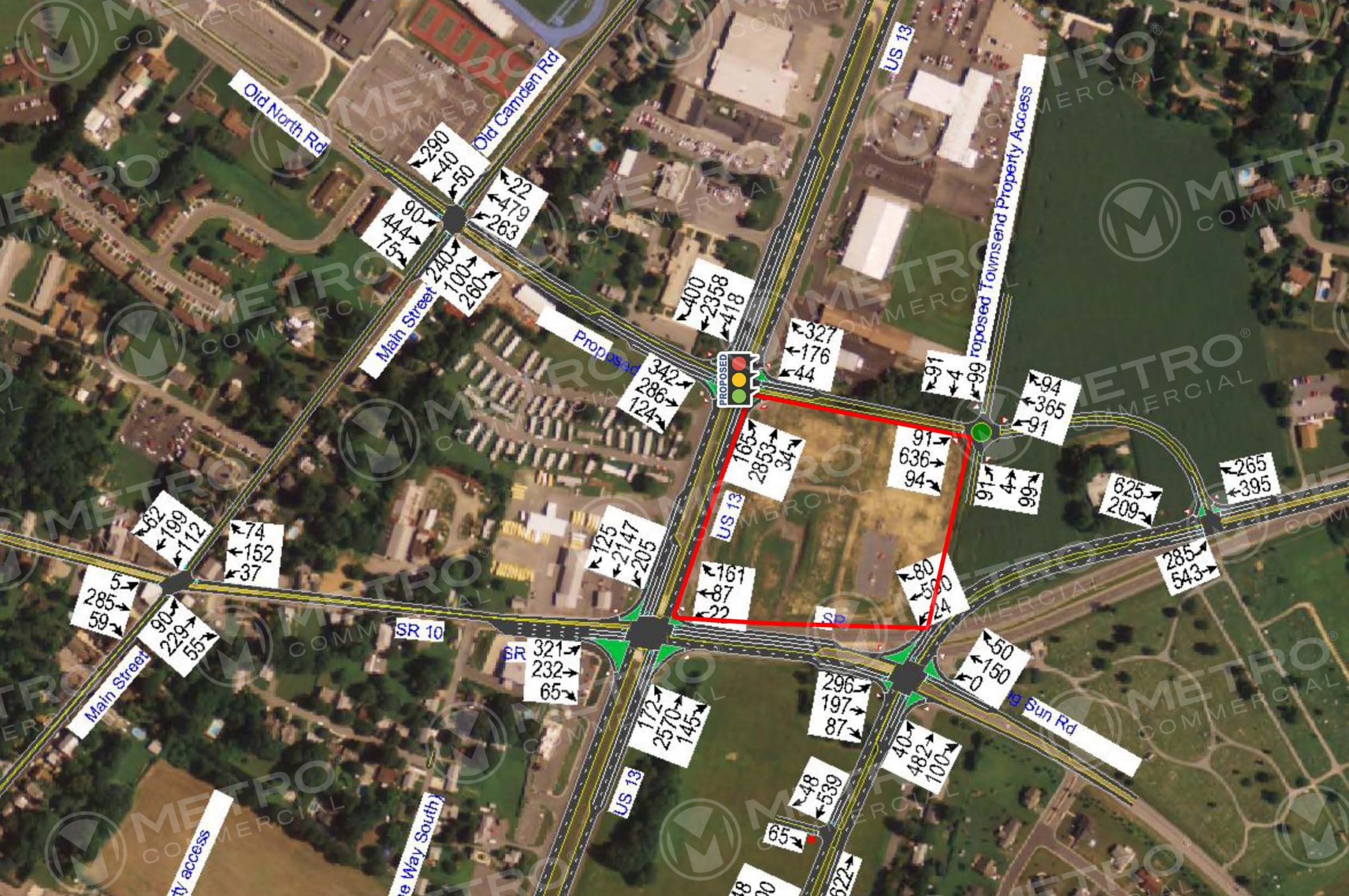
jdougherty@metrocommercial.com



The information and images contained herein are from sources deemed reliable. However, Metro Commercial Real Estate, Inc. makes no representation whatsoever as to their accuracy or authenticity. Images shown may be modified for illustrative purposes. Images may be out-of-date and not current. 3.14.19

ROUTE 13 & ROUTE 10 DOVER, DE





The information and images contained herein are from sources deemed reliable. However, Metro Commercial Real Estate, Inc. makes no representation whatsoever as to their accuracy or authenticity. Images shown may be modified for illustrative purposes. Images may be out-of-date and not current. 3.14.19

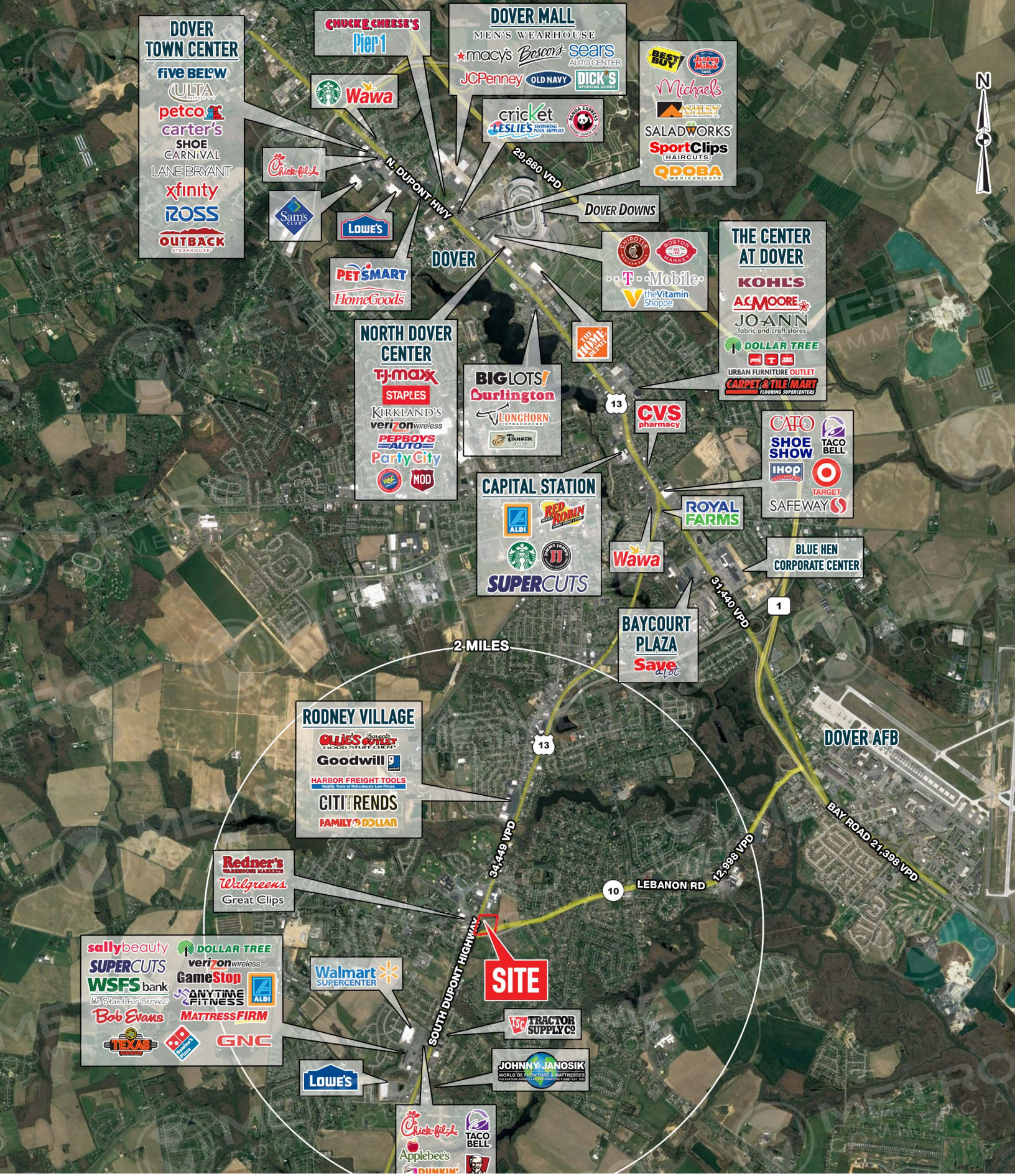
ROUTE 13 & ROUTE 10 DOVER, DE



The information and images contained herein are from sources deemed reliable. However, Metro Commercial Real Estate, Inc. makes no representation whatsoever as to their accuracy or authenticity. Images shown may be modified for illustrative purposes. Images may be out-of-date and not current. 3.14.19

ROUTE 13 & ROUTE 10 DOVER, DE





The information and images contained herein are from sources deemed reliable. However, Metro Commercial Real Estate, Inc. makes no representation whatsoever as to their accuracy or authenticity. Images shown may be modified for illustrative purposes. Images may be out-of-date and not current. 3.14.19

ROUTE 13 & ROUTE 10 DOVER, DE

