



**Available for Lease**

±4,220 - ±4,769 SF

# 9660-9692 Elk Grove-Florin Rd Elk Grove, CA

## Description

In historic Elk Grove, South of Elk Grove Boulevard, in well established sub-market. Retail space with 100% conditioned showroom.

## Property Features

- Prominent signage/exposure on Elk Grove-Florin Road
- Adjacent to other high traffic retailers
- Central Elk Grove location, one block off of Elk Grove Boulevard
- Zoned LC

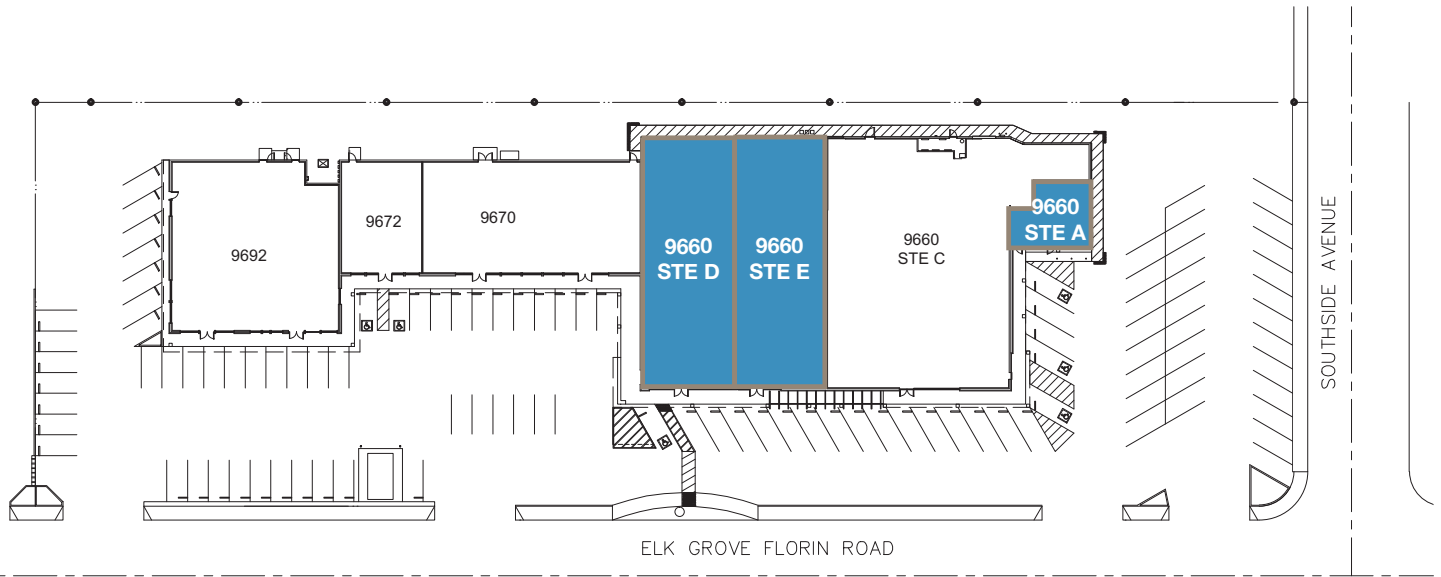


**JACKSON**  
PROPERTIES

For further information please contact us at (916) 381-8113 or [jacksonprop.com](http://jacksonprop.com)

Broker participation is invited.

The information herein is provided from reliable sources; however, Jackson Properties, Inc. assumes no liability for accuracy. The individual broker or user should confirm the physical information for themselves. Prices subject to change without notice.



# 9660-9692 Elk Grove-Florin Rd Elk Grove, CA

## Available Units

## Total SF

## Monthly Rent

9660 Elk Grove-Florin Road, Suite E

±4,220 SF\*

\$5,490.00 NNN

9660 Elk Grove-Florin Road, Suite D

±4,647 SF\*

\$6,040.00 NNN

9670 Elk Grove-Florin Road, Suite A

±4,769 SF\*

\$6,200.00 NNN

\*Units can be configured for up to 13,636 SF of continuous space.



**JACKSON**  
PROPERTIES

For further information please contact us at (916) 381-8113 or [jacksonprop.com](http://jacksonprop.com)

Broker participation is invited.

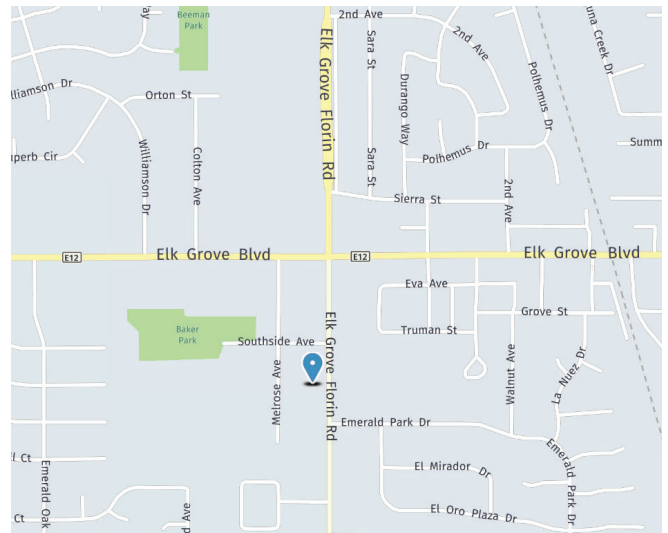
The information herein is provided from reliable sources; however, Jackson Properties, Inc. assumes no liability for accuracy. The individual broker or user should confirm the physical information for themselves. Prices subject to change without notice. Disclaimer for 3-5 lease rate.





# Elk Grove Retail

9660-9692 Elk Grove-Florin Road |  
Elk Grove, CA

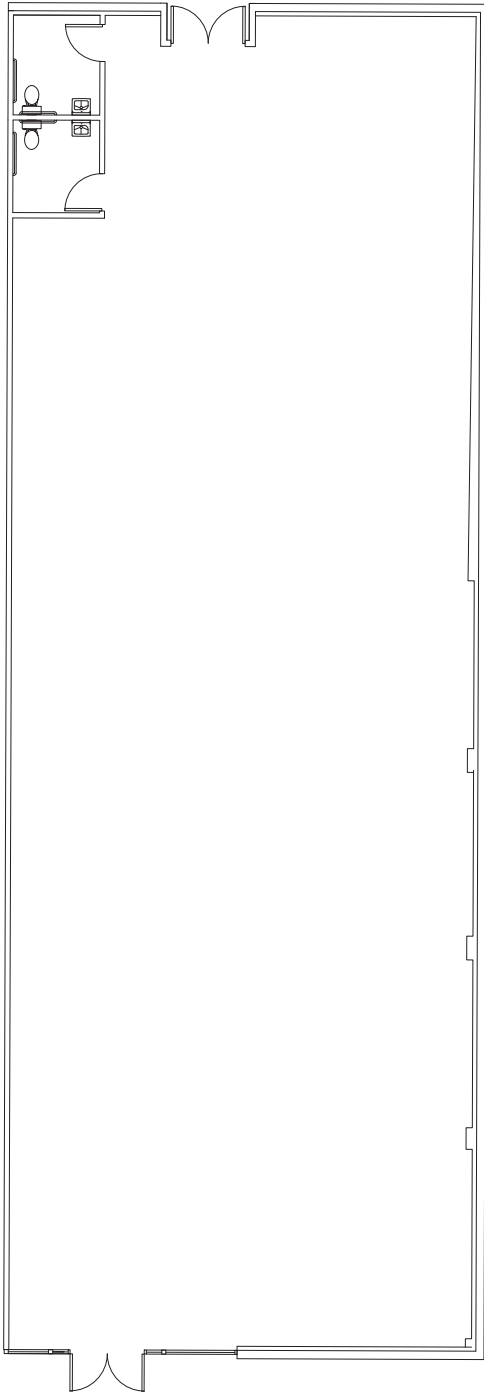


**JACKSON**  
PROPERTIES

For further information please contact us at (916) 381-8113 or [jacksonprop.com](http://jacksonprop.com)

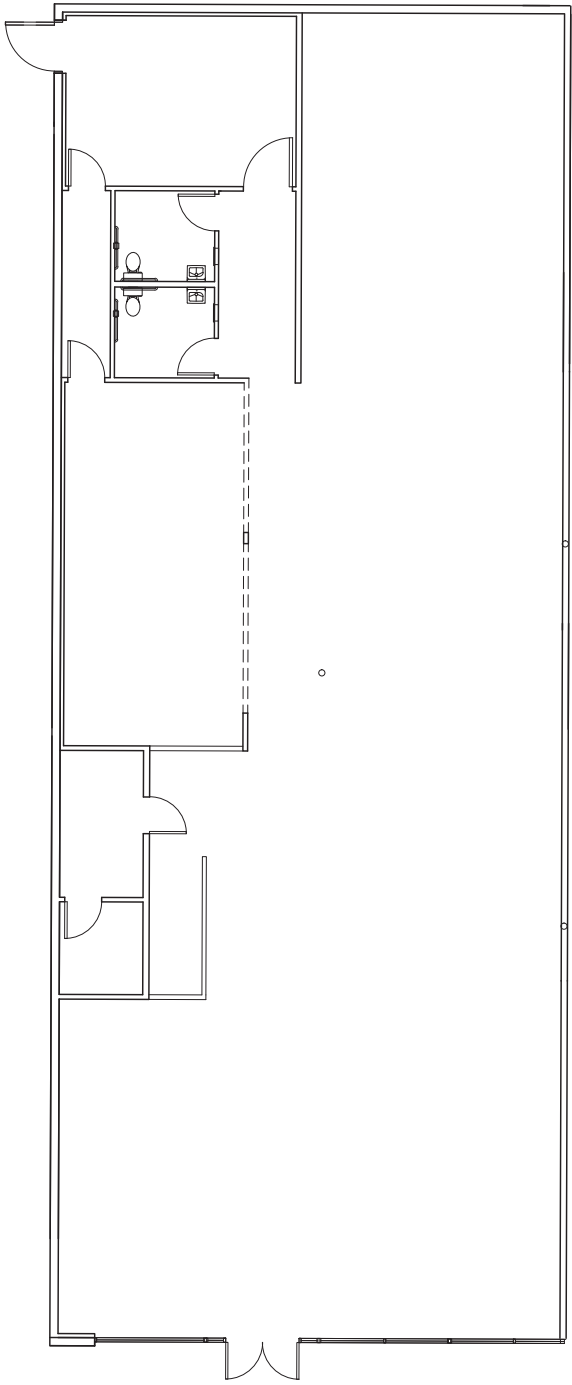
# 9660 Elk Grove-Florin Road, Elk Grove

## Suite E ±4,220 SF



# 9660 Elk Grove-Florin Road, Elk Grove

## Suite D ±4,647 SF



# 9670 Elk Grove-Florin Road, Elk Grove

## Suite A ±4,769 SF

