



NAI Columbia

For Sale or Ground Lease

±66.0 AC

Industrial Land

Cook Road

Ridgeway, South Carolina

CONTACT BROKERS FOR MORE INFORMATION:

Tombo Milliken

+1 803 744 9852

tombo.milliken@naicolumbia.com

Tom Milliken

+1 803 744 9837

tmilliken@naicolumbia.com

THE INFORMATION CONTAINED HEREIN HAS BEEN GIVEN TO US BY THE OWNER OF THE PROPERTY OR OTHER SOURCES WE DEEM RELIABLE. WE HAVE NO REASON TO DOUBT ITS ACCURACY, BUT WE DO NOT GUARANTEE IT. ALL INFORMATION SHOULD BE VERIFIED PRIOR TO PURCHASE OR LEASE.

807 Gervais Street, Suite 301
Columbia, South Carolina 29201
+1 803.254.0100
www.naicolumbia.com

Cook Road

Ridgeway, South Carolina

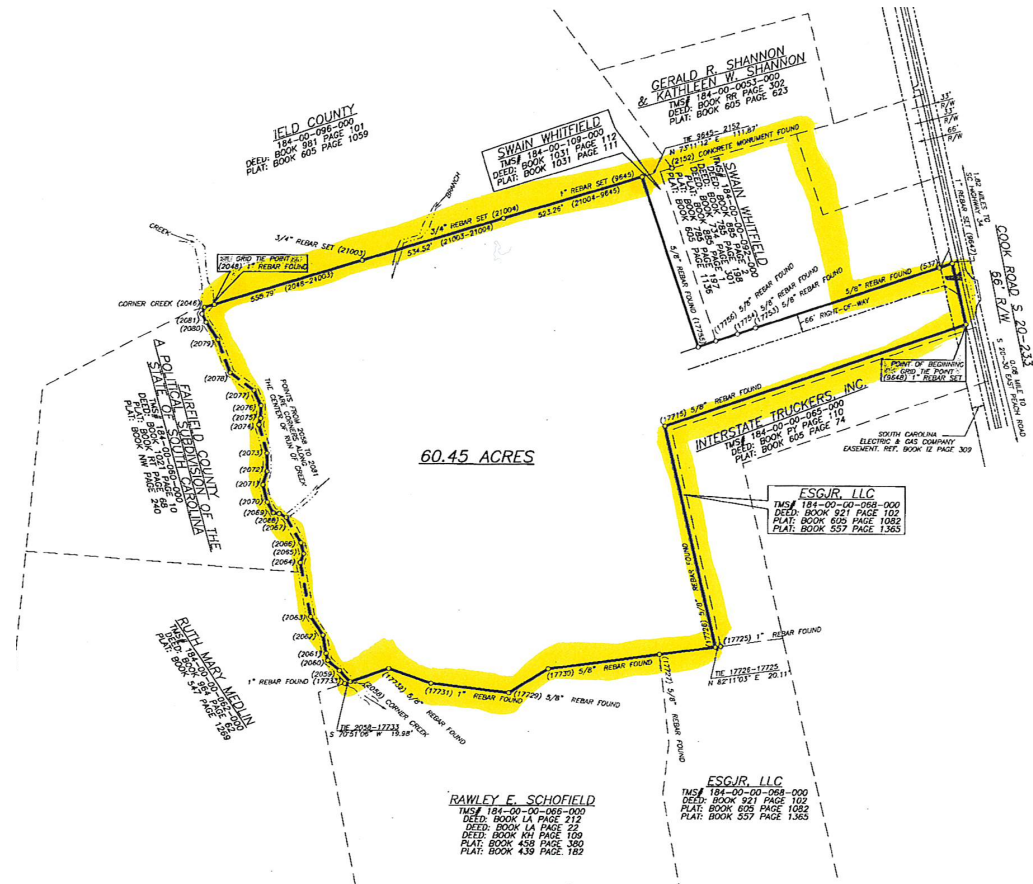
For Sale or Ground Lease

±66.0 AC

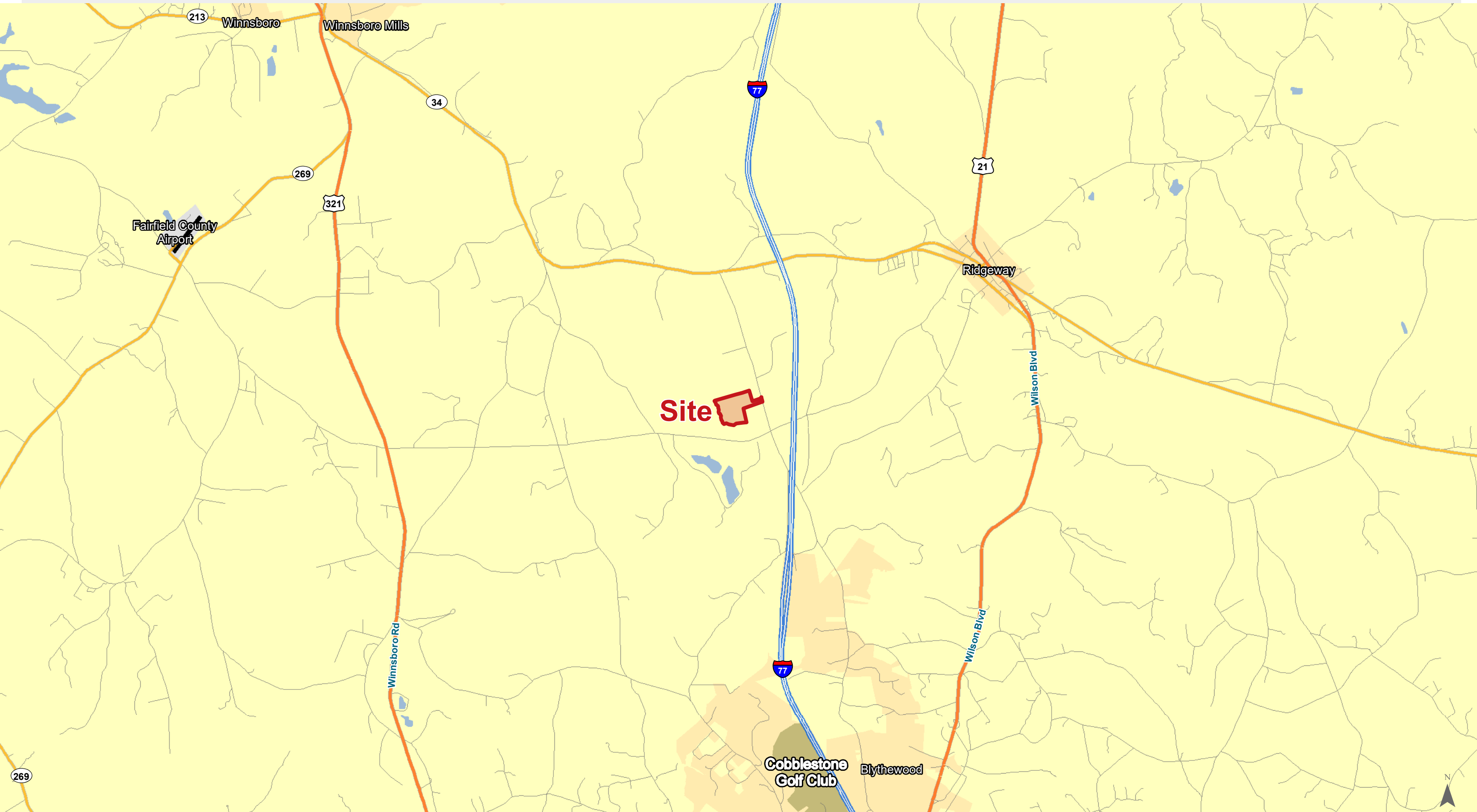
Industrial Land

Property Features

- For Sale or Ground Lease
- ±66.0 acres on Cook Road near exit 32 on I-77
- Along industrial corridor
- All utilities available. It is the responsibility of the purchaser to determine location and availability
- Zoning: I-1, Fairfield County
- Approximately 35-40 usable acres
- Sale Price: REDUCED
\$660,000 (\$10,000 per acre)
\$495,000 (\$7,500 per acre)
- Ground Lease Fee: TBD



Location

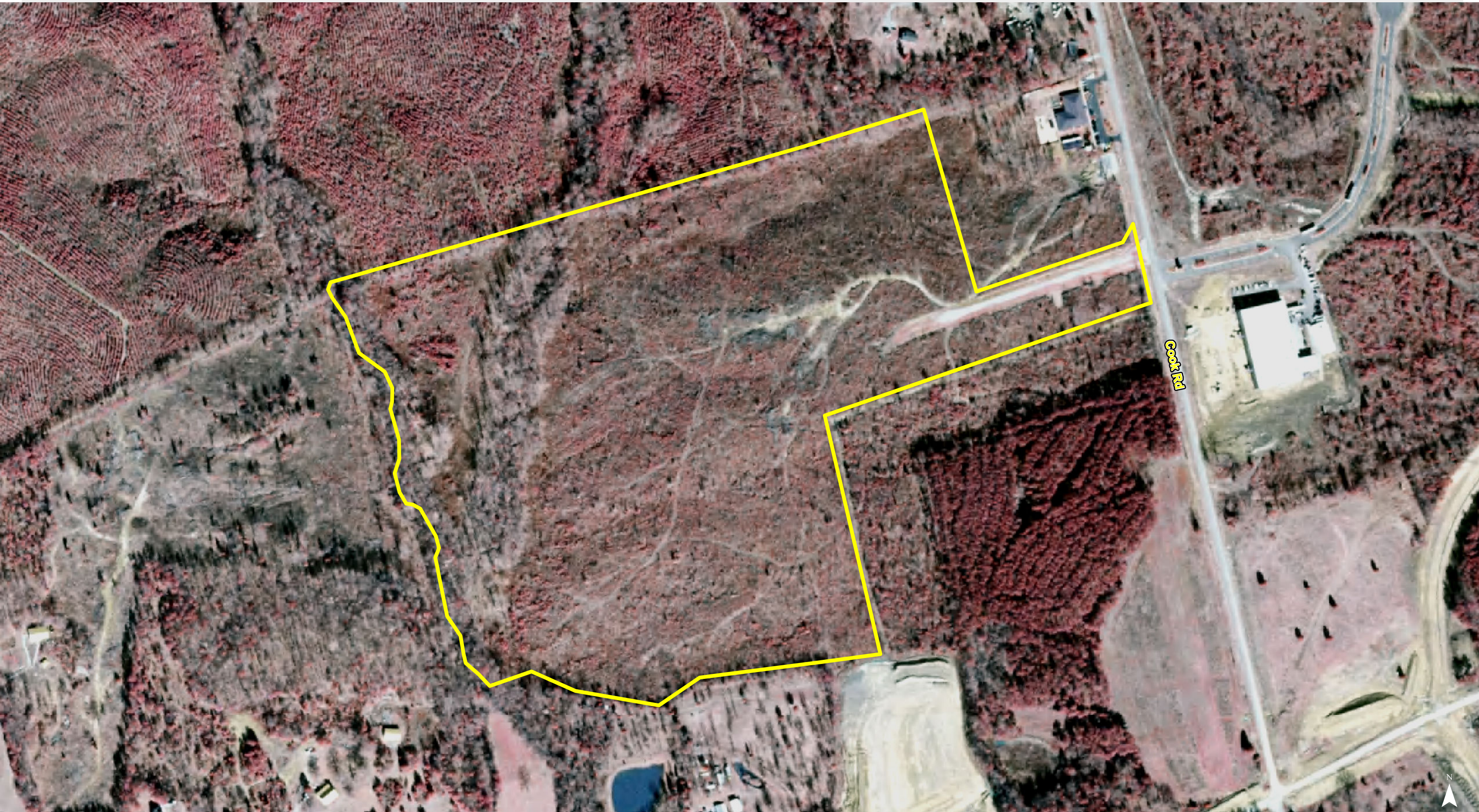


Map Updated: Tuesday, March 13, 2018. This information submitted is not guaranteed. Although obtained from reliable sources, all information should be confirmed prior to use or reliance upon the information. This document may not be reproduced in whole or in part without the express written consent of NAI Avant.



Map Updated: Tuesday, March 13, 2018. This information submitted is not guaranteed. Although obtained from reliable sources, all information should be confirmed prior to use or reliance upon the information. This document may not be reproduced in whole or in part without the express written consent of NAI Avant.





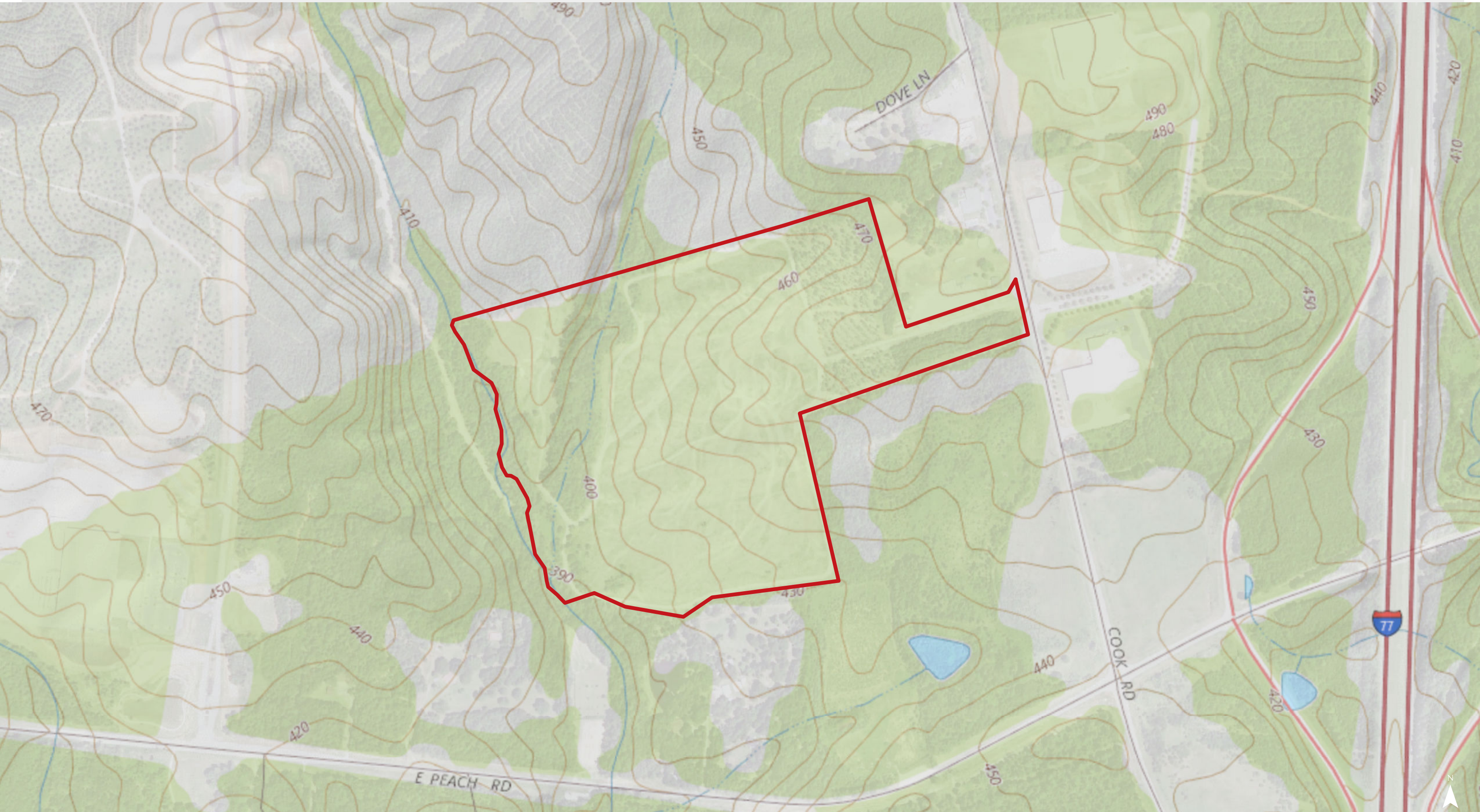
Map Updated: Tuesday, March 13, 2018. This information submitted is not guaranteed. Although obtained from reliable sources, all information should be confirmed prior to use or reliance upon the information. This document may not be reproduced in whole or in part without the express written consent of NAI Avant.

Topographical Map



Map Updated: Tuesday, March 13, 2018. This information submitted is not guaranteed. Although obtained from reliable sources, all information should be confirmed prior to use or reliance upon the information. This document may not be reproduced in whole or in part without the express written consent of NAI Avant.

Topographical Map



Map Updated: Tuesday, March 13, 2018. This information submitted is not guaranteed. Although obtained from reliable sources, all information should be confirmed prior to use or reliance upon the information. This document may not be reproduced in whole or in part without the express written consent of NAI Avant.

SPECIAL FLOOD HAZARD AREAS

- 1% Annual Chance Flood Hazard
Zone A, AE, A99, AO, AH, AR, V, VE
- Regulatory Floodway

OTHER AREAS OF FLOOD HAZARD

- 0.2% Annual Chance Flood Hazard
Zone X
- Future Conditions 1% Annual Chance Flood Hazard
Zone X
- Area with Reduced Flood Risk due to Levee
Zone X
- Areas Outside the 0.2% Annual Chance Floodplain
Zone X
- Areas of Undetermined Flood Hazard
Zone D

CROSS SECTIONS & BFES

- 18.2 Cross Sections with 1% Annual Chance Water Surface Elevation
- 17.5 Cross Sections with 1% Annual Chance Water Surface Elevation
- Coastal Transect
- Coastal Transect Baseline
- Profile Baseline
- Base Flood Elevation

National Wetlands Inventory

- Estuarine and Marine Deepwater
- Estuarine and Marine Wetland
- Freshwater Emergent Wetland
- Freshwater Forested/Shrub Wetland
- Freshwater Pond
- Lake
- Riverine



Map Updated: Tuesday, March 13, 2018. This information submitted is not guaranteed. Although obtained from reliable sources, all information should be confirmed prior to use or reliance upon the information. This document may not be reproduced in whole or in part without the express written consent of NAI Avant.

Soil Survey



Map Updated: Tuesday, March 13, 2018. This information submitted is not guaranteed. Although obtained from reliable sources, all information should be confirmed prior to use or reliance upon the information. This document may not be reproduced in whole or in part without the express written consent of NAI Avant.

Map Unit Description (Brief, Generated)

Fairfield County, South Carolina

[Minor map unit components are excluded from this report]

Map unit: GeB - Georgeville loam, 2 to 6 percent slopes

Component: Georgeville (80%)

The Georgeville component makes up 80 percent of the map unit. Slopes are 2 to 6 percent. This component is on hillslopes on uplands. The parent material consists of clayey residuum weathered from argillite. Depth to a root restrictive layer is greater than 60 inches. The natural drainage class is well drained. Water movement in the most restrictive layer is moderately high. Available water to a depth of 60 inches is high. Shrink-swell potential is low. This soil is not flooded. It is not ponded. There is no zone of water saturation within a depth of 72 inches. Organic matter content in the surface horizon is about 1 percent. Nonirrigated land capability classification is 2e. This soil does not meet hydric criteria.

Map unit: GeC - Georgeville loam, 6 to 10 percent slopes

Component: Georgeville (80%)

The Georgeville component makes up 80 percent of the map unit. Slopes are 6 to 10 percent. This component is on hillslopes on uplands. The parent material consists of clayey residuum weathered from argillite. Depth to a root restrictive layer is greater than 60 inches. The natural drainage class is well drained. Water movement in the most restrictive layer is moderately high. Available water to a depth of 60 inches is high. Shrink-swell potential is low. This soil is not flooded. It is not ponded. There is no zone of water saturation within a depth of 72 inches. Organic matter content in the surface horizon is about 1 percent. Nonirrigated land capability classification is 3e. This soil does not meet hydric criteria.

Map unit: PaE - Pacolet sandy loam, 10 to 25 percent slopes

Component: Pacolet (85%)

The Pacolet component makes up 85 percent of the map unit. Slopes are 10 to 25 percent. This component is on hillslopes on uplands. The parent material consists of clayey residuum weathered from granite and gneiss. Depth to a root restrictive layer is greater than 60 inches. The natural drainage class is well drained. Water movement in the most restrictive layer is moderately high. Available water to a depth of 60 inches is moderate. Shrink-swell potential is low. This soil is not flooded. It is not ponded. There is no zone of water saturation within a depth of 72 inches. Organic matter content in the surface horizon is about 1 percent. Nonirrigated land capability classification is 6e. This soil does not meet hydric criteria.

Map unit: RnF - Rion loamy sand, 15 to 40 percent slopes

Component: Rion (75%)

The Rion component makes up 75 percent of the map unit. Slopes are 15 to 40 percent. This component is on hillslopes on uplands. The parent material consists of clayey residuum weathered from granite. Depth to a root restrictive layer is greater than 60 inches. The natural drainage class is well drained. Water movement in the most restrictive layer is moderately high. Available water to a depth of 60 inches is moderate. Shrink-swell potential is low. This soil is not flooded. It is not ponded. There is no zone of water saturation within a depth of 72 inches. Organic matter content in the surface horizon is about 1 percent. Nonirrigated land capability classification is 7e. This soil does not meet hydric criteria.

Fairfield County, South Carolina

[Minor map unit components are excluded from this report]

Map unit: To - Toccoa loam

Component: Toccoa (70%)

The Toccoa component makes up 70 percent of the map unit. Slopes are 0 to 2 percent. This component is on flood plains on valleys. The parent material consists of loamy alluvium. Depth to a root restrictive layer is greater than 60 inches. The natural drainage class is moderately well drained. Water movement in the most restrictive layer is high. Available water to a depth of 60 inches is moderate. Shrink-swell potential is low. This soil is occasionally flooded. It is not ponded. A seasonal zone of water saturation is at 45 inches during January, February, March, April, December. Organic matter content in the surface horizon is about 2 percent. Nonirrigated land capability classification is 2w. This soil does not meet hydric criteria.

Map unit: W - Water

Component: Water (100%)

Generated brief soil descriptions are created for major soil components. The Water is a miscellaneous area.