

2635 N. SQUIRREL ROAD
AUBURN HILLS, MICHIGAN

AERES

SIGNATURE
ASSOCIATES

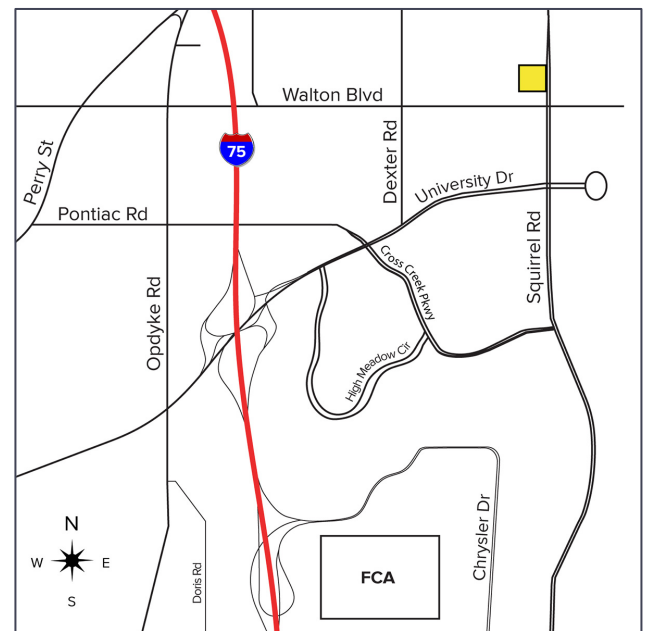
LAND FOR SALE

LOCATED AT HIGH TRAFFIC CORNER



PROPERTY FEATURES

- 2.20 acres total available / 1.80 acres of buildable land
- Flexible zoning of B-2
- Zoning allows for a variety of uses including banks with drive-in facilities, professional offices, restaurants, miscellaneous retail and more
- The detention pond would need to be shared with the church to the south of the site
- Shared parking available with church (6) days per week, excluding Sunday
- Asking Price: \$595,000.00 (\$330,555.55/buildable acre)



For more information, please contact:

ANGELA THOMAS
ERICA DUNLAP
NICOLE VOISARD

(248) 799 3159
AERES@SIGNATUREASSOCIATES.COM

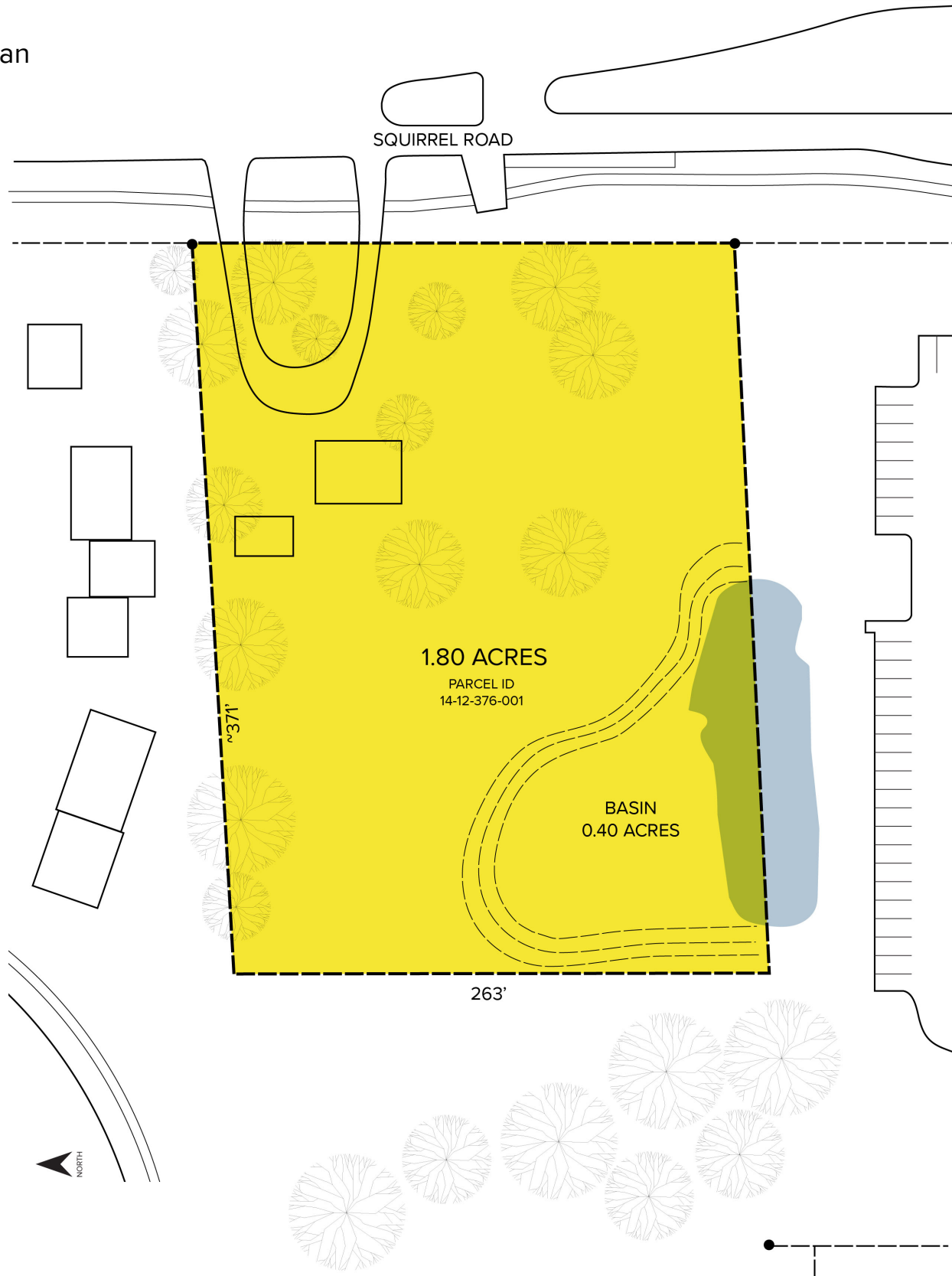
SIGNATURE ASSOCIATES
One Towne Square, Suite 1200
Southfield, MI 48076
www.signatureassociates.com

2635 N. SQUIRREL - AUBURN HILLS, MICHIGAN

Land For Sale

2.20
Acres
AVAILABLE

Site Plan



For more information, please contact:

ANGELA THOMAS
ERICA DUNLAP
NICOLE VOISARD

(248) 799 3159
AERES@SIGNATUREASSOCIATES.COM

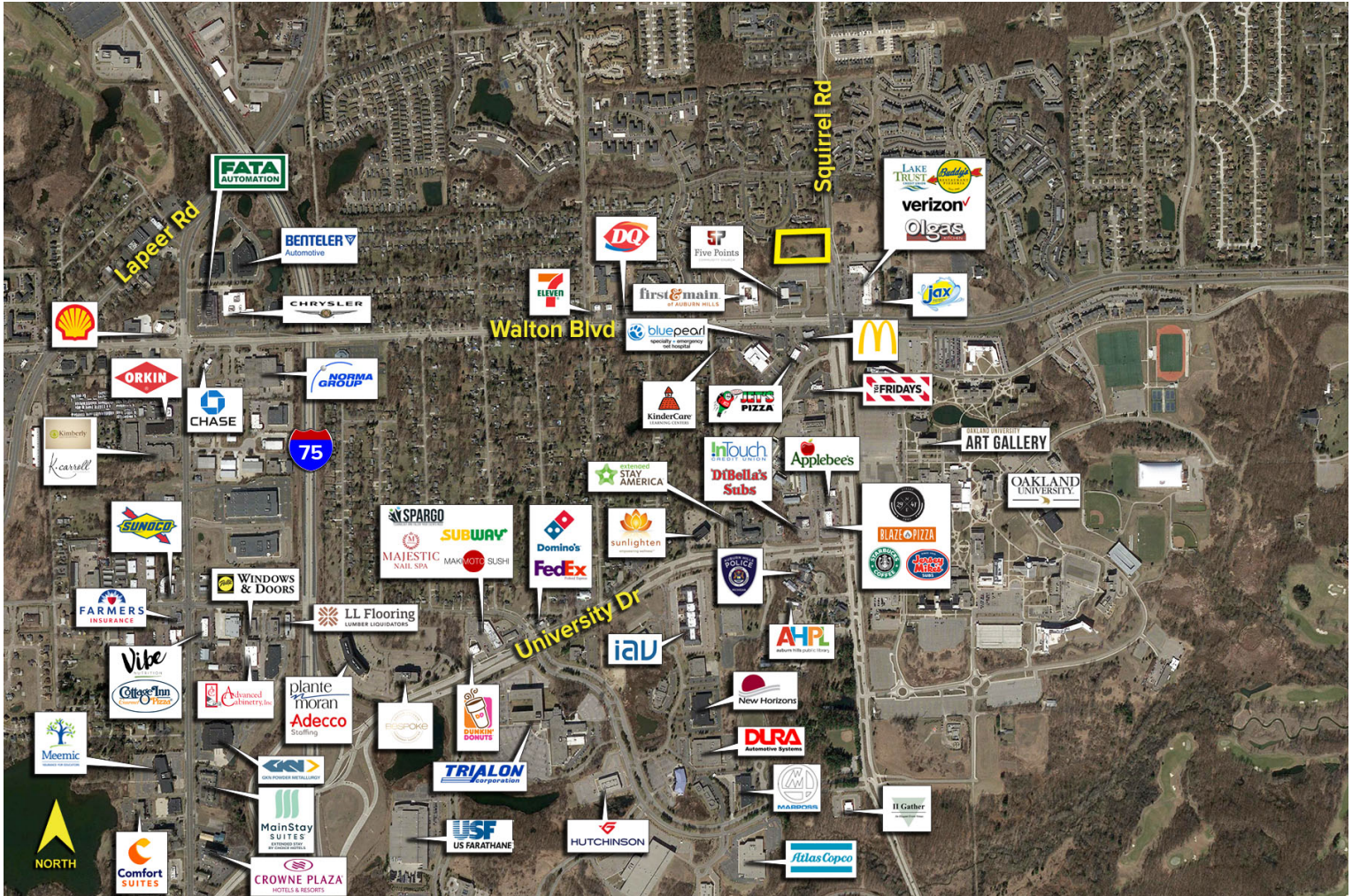
SIGNATURE ASSOCIATES
One Towne Square, Suite 1200
Southfield, MI 48076
www.signatureassociates.com

2635 N. SQUIRREL - AUBURN HILLS, MICHIGAN

Land For Sale

2.20
Acres
AVAILABLE

Aerial Businesses



For more information, please contact:

ANGELA THOMAS
ERICA DUNLAP
NICOLE VOISARD

(248) 799 3159
AERES@SIGNATUREASSOCIATES.COM

SIGNATURE ASSOCIATES
One Towne Square, Suite 1200
Southfield, MI 48076
www.signatureassociates.com