



City Farm

1700 City Farm Dr., Baton Rouge, Louisiana 70806

Property Highlights

- 1,350 SF of office space
- Brand new construction
- High traffic corridor
- Right next to Towne Center
- Front suite of the City Farm office park
- Easy access with center turn lane
- Can customize floor plan and property will be presented turnkey

Lease Rate

\$26.00 SF/yr (NN)



For more information

Lynn Daigle, CCIM

O: 225 297 7804 | C: 225 614 7675
lynn@latterblum.com

James McGaugh

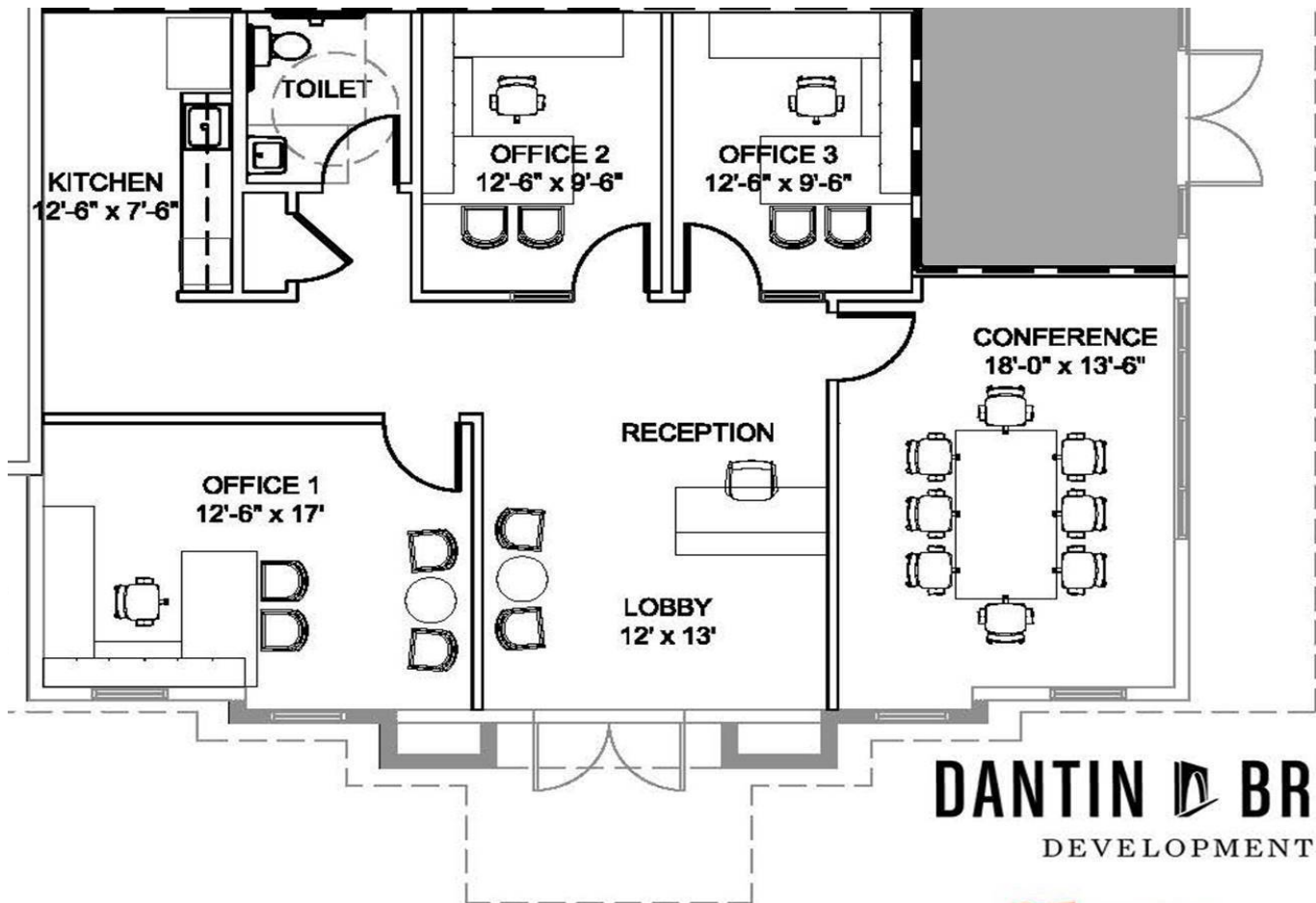
O: 225 295 0800 | C: 225 636 0166
jmccaugh@latterblum.com

Ty Martin

O: 225 297 7888 | C: 504 224 0191
tmartin@latterblum.com

CALL OR EMAIL FOR MORE INFORMATION





DANTIN  BRUCE
DEVELOPMENT



FOR ILLUSTRATION PURPOSES ONLY, NOT TO SCALE

Location Maps

