

WORK AT

---

# CITY RIDGE

---

WASHINGTON DC

172,000 SF - DELIVERING 2022

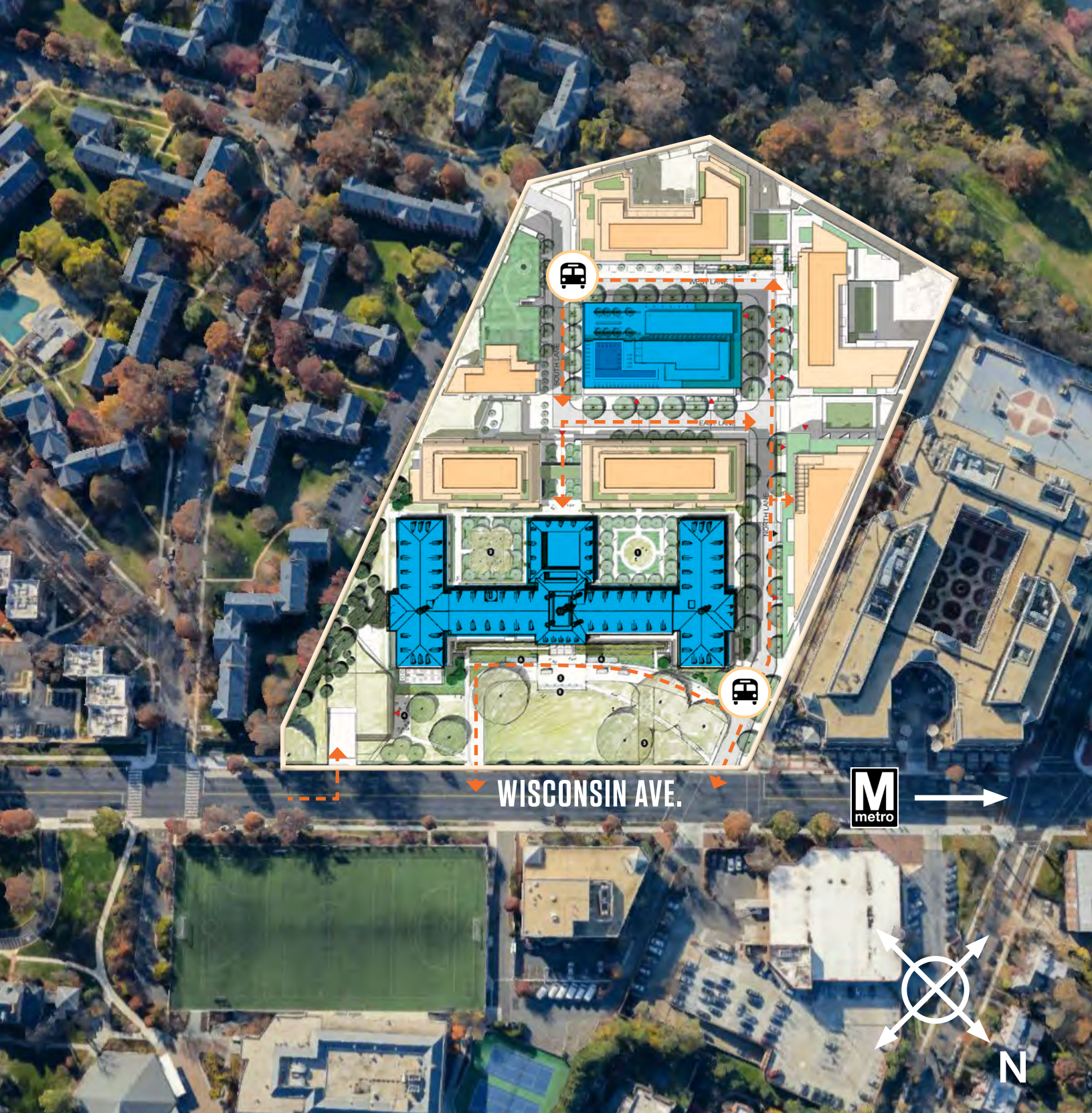
---

ROADSIDE



**RECRUITING  
JUST GOT  
EASIER.**





CITY RIDGE'S PRIVATE SHUTTLE LOOP TO TENLEYTOWN METRO



0.5 MILE WALK TO METRO





*Wegmans*

EQUINOX

112,000 SF OF OFFICE | BUILDING A  
 60,000 SF OF OFFICE | BUILDING D  
 153,000 SF OF RETAIL  
 687 NEW APARTMENTS





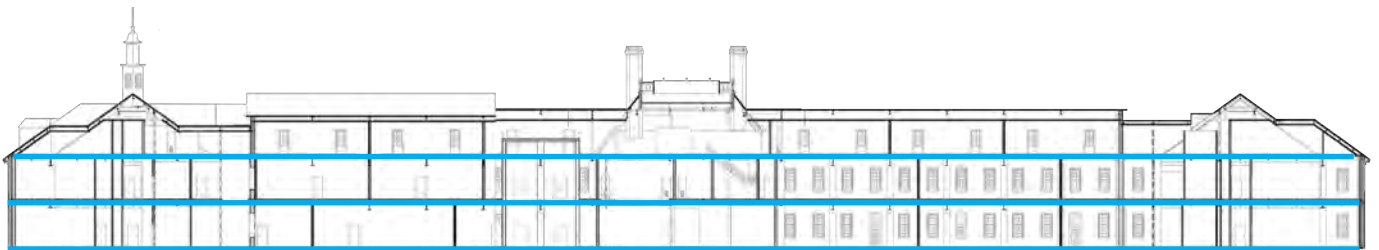
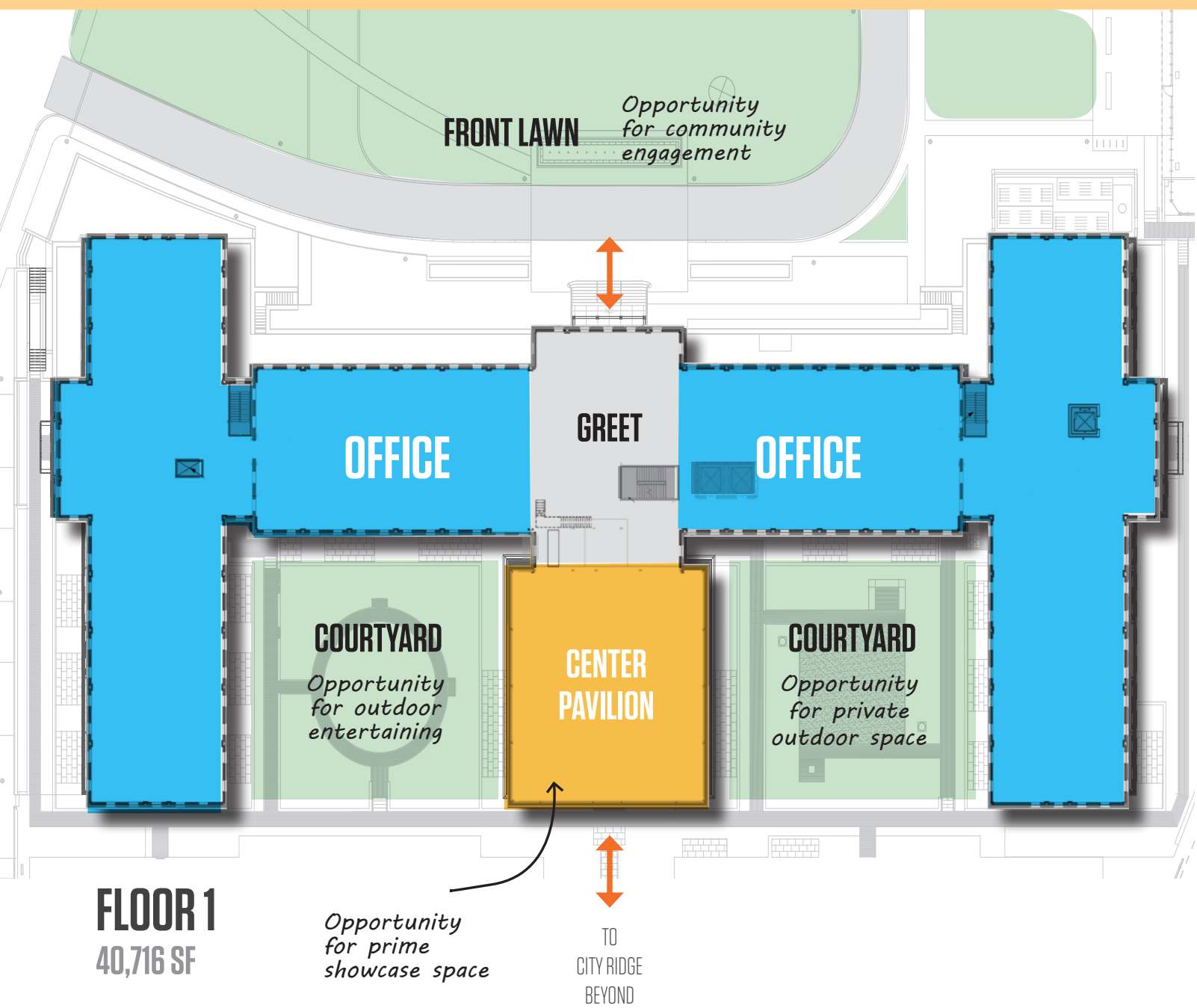
EQUINOX

DC'S FIRST  
*Wegmans*



# HISTORIC | BUILDING A

112,000 SF AVAILABLE | COLUMN FREE SPACE | 15' CEILINGS



THREE FLOORS OF OFFICE AVAILABLE



— BRING YOUR —  
**ELEPHANT**  
— TO WORK —

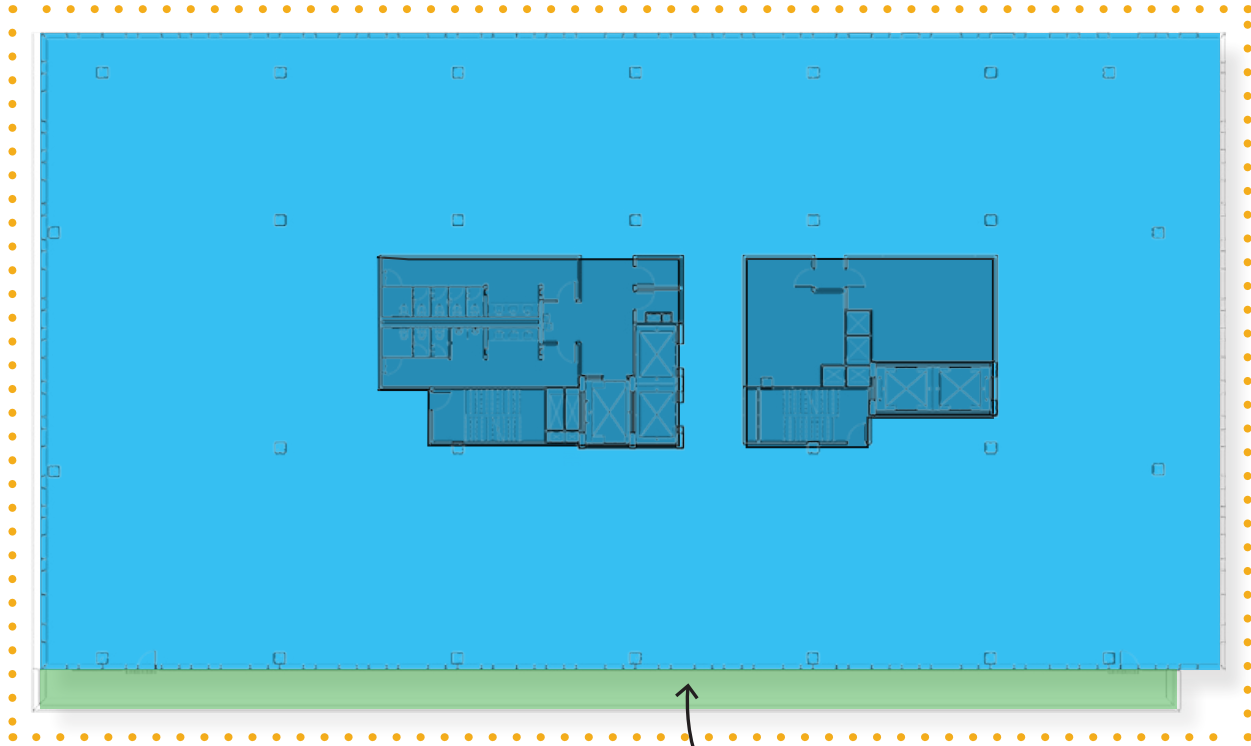
ENDLESS POSSIBILITIES WITH  
COLUMN FREE SPACE & UP TO 15' CEILINGS



# NEW CONSTRUCTION | BUILDING D

60,000 SF AVAILABLE | FOUR SIDES OF GLASS

WINDOWLINE

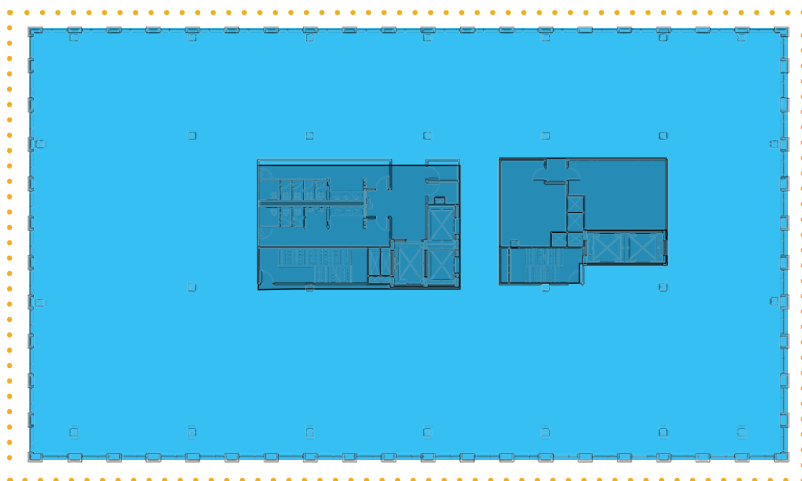


## FLOOR 4

Floor Plate | 20,552 SF

*Private terrace  
on floor 4*

WINDOWLINE



## FLOOR 3

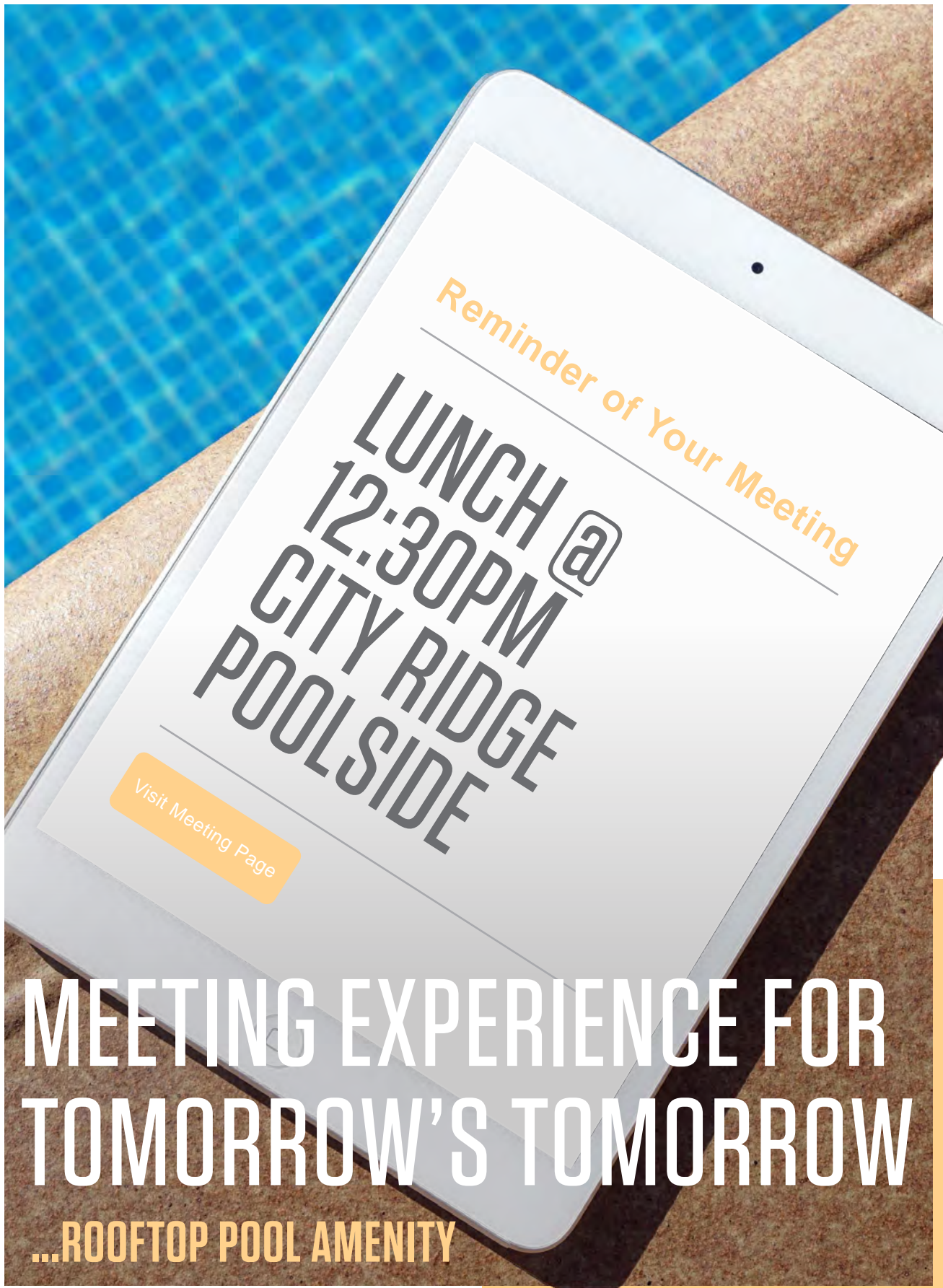
Floor Plate | 19,865 SF

ROOFTOP POOL



DIRECT ACCESS FROM GARAGE TO OFFICE





# MEETING EXPERIENCE FOR TOMORROW'S TOMORROW

...ROOFTOP POOL AMENITY





# WORK OUTSIDE THE BOX

CUSTOMIZE YOUR  
PRIVATE COURTYARD



**COME SEE FOR  
YOURSELF.**



# CITY RIDGE

WASHINGTON DC

 **TRANSWESTERN**<sup>®</sup>

1717 K Street NW, Suite 1000  
Washington, DC 20006

**GEORGE VOGELI**

+1 202 775 7042  
george.vogeli@transwestern.com

**SCOTT FETTEROLF**

+1 202 775 7012  
scott.fetterolf@transwestern.com

**ERIN KURUCZA**

+1 202 775 7006  
erin.kurucza@transwestern.com

**RYAN FERGUSON**

+1 202 207 0711  
ryan.ferguson@transwestern.com